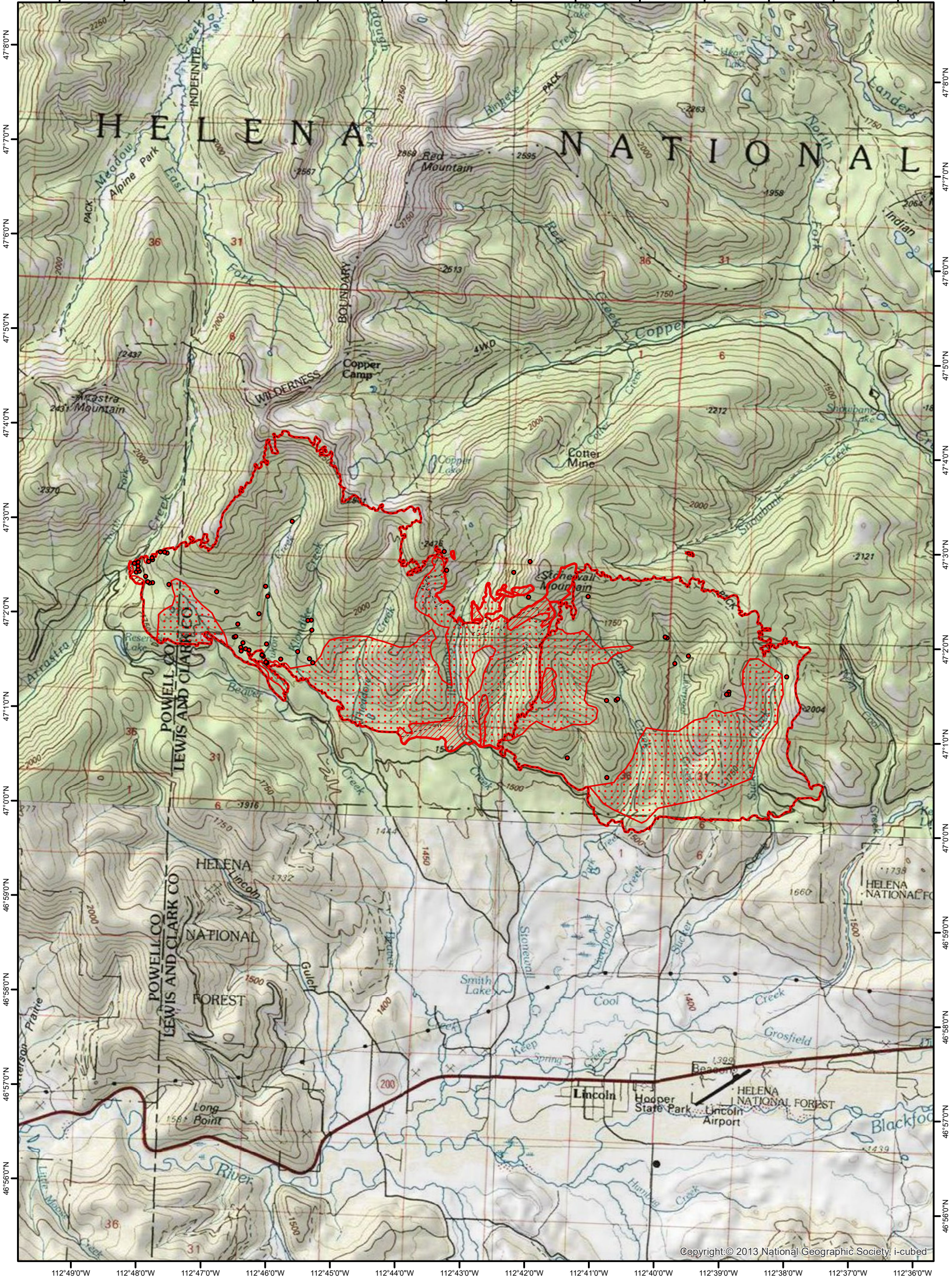


112°50'0"W 112°49'0"W 112°48'0"W 112°47'0"W 112°46'0"W 112°45'0"W 112°44'0"W 112°43'0"W 112°42'0"W 112°41'0"W 112°40'0"W 112°39'0"W 112°38'0"W 112°37'0"W



Copyright: © 2013 National Geographic Society, i-cubed

112°49'0"W 112°48'0"W 112°47'0"W 112°46'0"W 112°45'0"W 112°44'0"W 112°43'0"W 112°42'0"W 112°41'0"W 112°40'0"W 112°39'0"W 112°38'0"W 112°37'0"W 112°36'0"W



**INFRARED MAP**  
 Park Creek Fire (MT-HLF-000146)  
 Flight: August 18, 2018 @ 2311 MDT  
 11,860 IR Acres  
 IRIN: Dale Gough



Legend	
	Heat Perimeter
	Intense Heat
	Scattered Heat
	Isolated Heat Sources
	20170817_2329_Previus Perimeter