

112°50'0"W 112°49'0"W 112°48'0"W 112°47'0"W 112°46'0"W 112°45'0"W 112°44'0"W 112°43'0"W 112°42'0"W 112°41'0"W 112°40'0"W 112°39'0"W 112°38'0"W 112°37'0"W 112°36'0"W 112°35'0"W





47°50"N
47°40"N
47°30"N
47°20"N
47°10"N
47°00"N
46°59'0"N

47°50"N
47°40"N
47°30"N
47°20"N
47°10"N
47°00"N

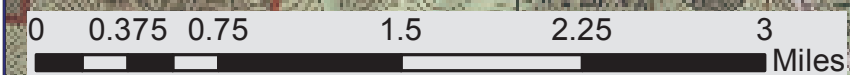
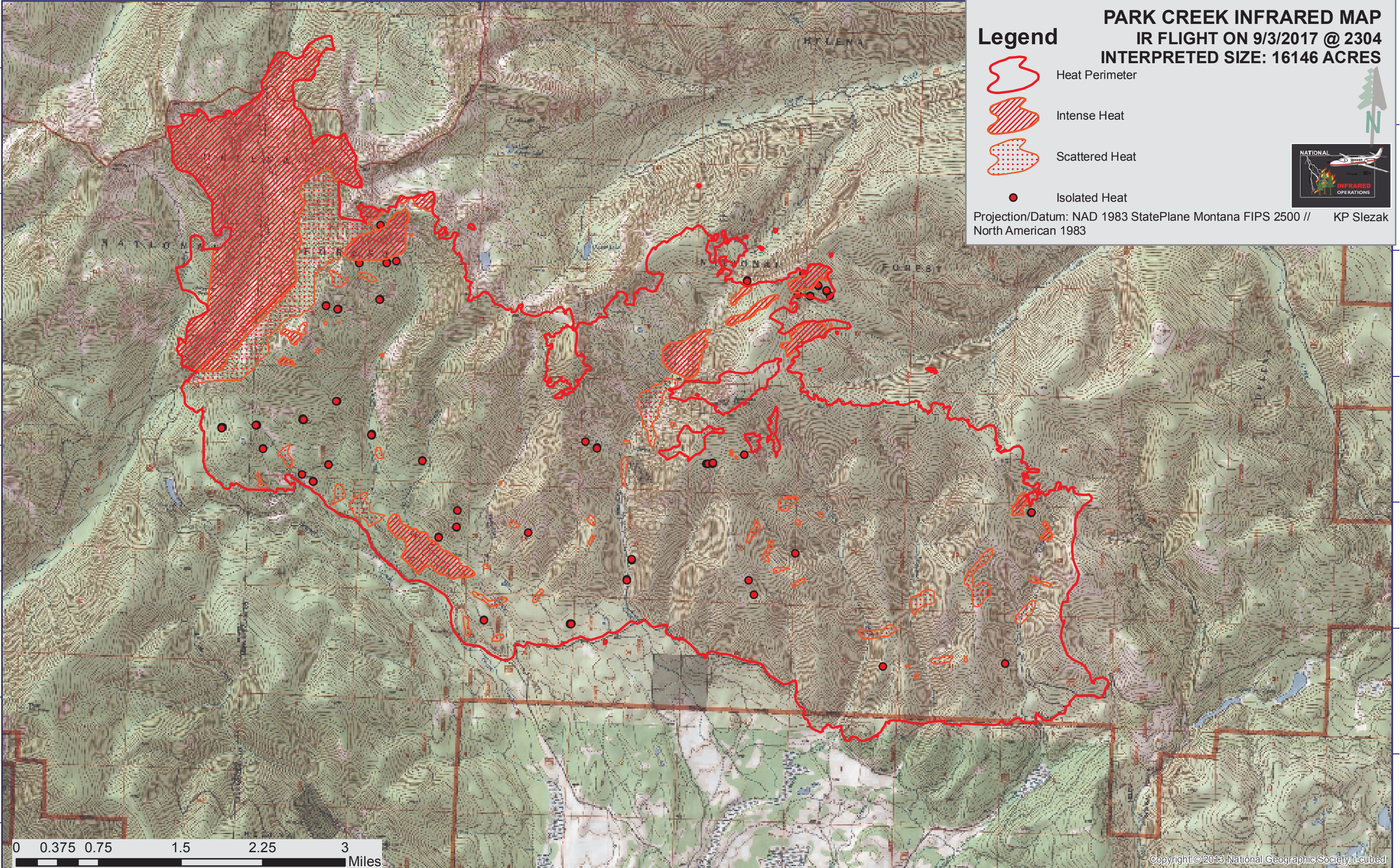
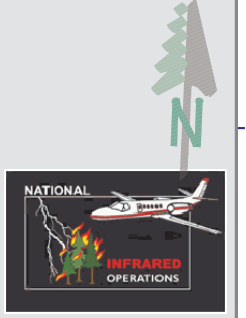
PARK CREEK INFRARED MAP

IR FLIGHT ON 9/3/2017 @ 2304
INTERPRETED SIZE: 16146 ACRES

Legend

-  Heat Perimeter
-  Intense Heat
-  Scattered Heat
-  Isolated Heat

Projection/Datum: NAD 1983 StatePlane Montana FIPS 2500 // KP Slezak North American 1983



112°50'0"W 112°49'0"W 112°48'0"W 112°47'0"W 112°46'0"W 112°45'0"W 112°44'0"W 112°43'0"W 112°42'0"W 112°41'0"W 112°40'0"W 112°39'0"W 112°38'0"W 112°37'0"W 112°36'0"W 112°35'0"W