

112°52'0"W 112°51'0"W 112°50'0"W 112°49'0"W 112°48'0"W 112°47'0"W 112°46'0"W 112°45'0"W 112°44'0"W 112°43'0"W 112°42'0"W 112°41'0"W 112°40'0"W 112°39'0"W 112°38'0"W 112°37'0"W 112°36'0"W 112°35'0"W

# PARK CREEK INFRARED MAP

IR FLIGHT ON 9/10/17 @ 0305  
INTERPRETED SIZE: 17594 ACRES

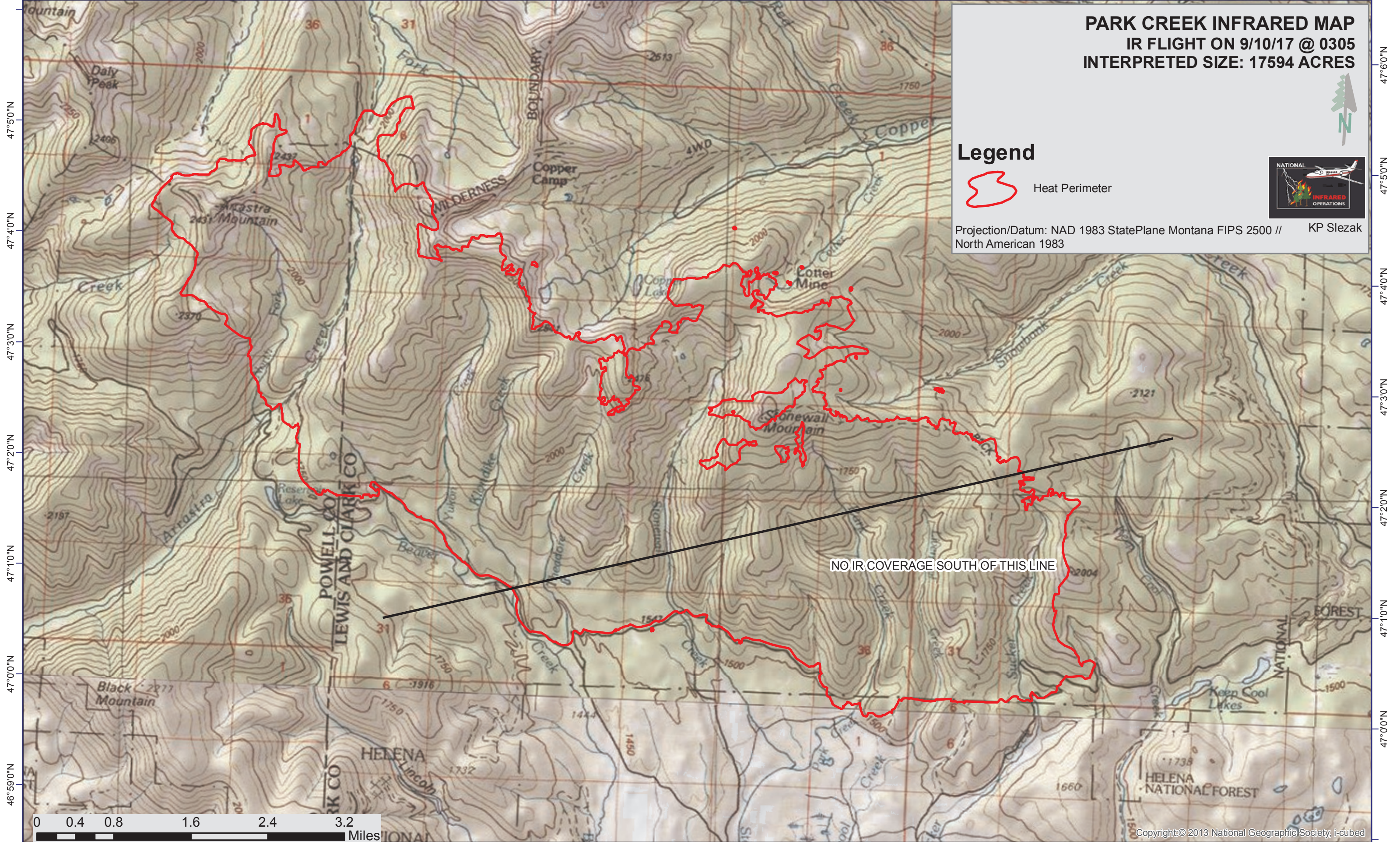


## Legend

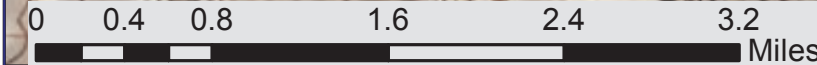
 Heat Perimeter



Projection/Datum: NAD 1983 StatePlane Montana FIPS 2500 // KP Slezak  
North American 1983



NO IR COVERAGE SOUTH OF THIS LINE



112°51'0"W 112°50'0"W 112°49'0"W 112°48'0"W 112°47'0"W 112°46'0"W 112°45'0"W 112°44'0"W 112°43'0"W 112°42'0"W 112°41'0"W 112°40'0"W 112°39'0"W 112°38'0"W 112°37'0"W 112°36'0"W 112°35'0"W 112°34'0"W

47°50'0"N  
47°40'0"N  
47°30'0"N  
47°20'0"N  
47°10'0"N  
47°00'0"N  
46°59'0"N

47°60'0"N  
47°50'0"N  
47°40'0"N  
47°30'0"N  
47°20'0"N  
47°10'0"N  
47°00'0"N