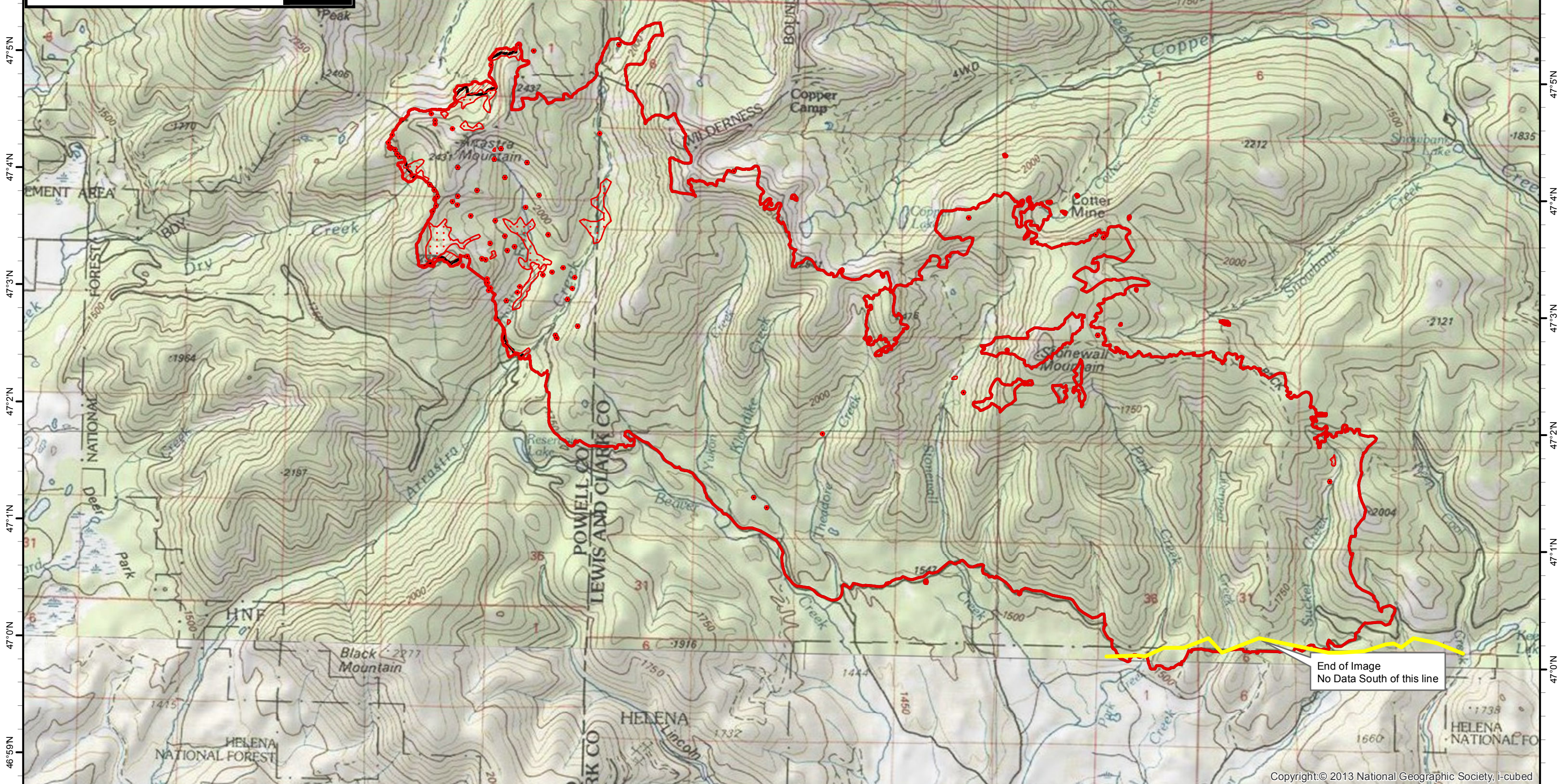


112°55'W 112°54'W 112°53'W 112°52'W 112°51'W 112°50'W 112°49'W 112°48'W 112°47'W 112°46'W 112°45'W 112°44'W 112°43'W 112°42'W 112°41'W 112°40'W 112°39'W 112°38'W 112°37'W

Infrared Map
Park Creek (MT-HLF-000146)
Map Date: 09/12/2017
Imagery Date: 09/12/2017
Imagery Time: 0003 MDT
IR Interpreted Acres: 17,718 acres
IRIN: Tina Rotenbury

- Isolated Heat Sources
- ▭ Heat Perimeter
- ▨ Intense Heat
- ◻ Scattered Heat
- ▭ Previous Heat Perimeter

NAD 1983 UTM Zone 12N
0 0.5 1 1.5 Miles



End of Image
No Data South of this line

112°54'W 112°53'W 112°52'W 112°51'W 112°50'W 112°49'W 112°48'W 112°47'W 112°46'W 112°45'W 112°44'W 112°43'W 112°42'W 112°41'W 112°40'W 112°39'W 112°38'W 112°37'W 112°36'W