







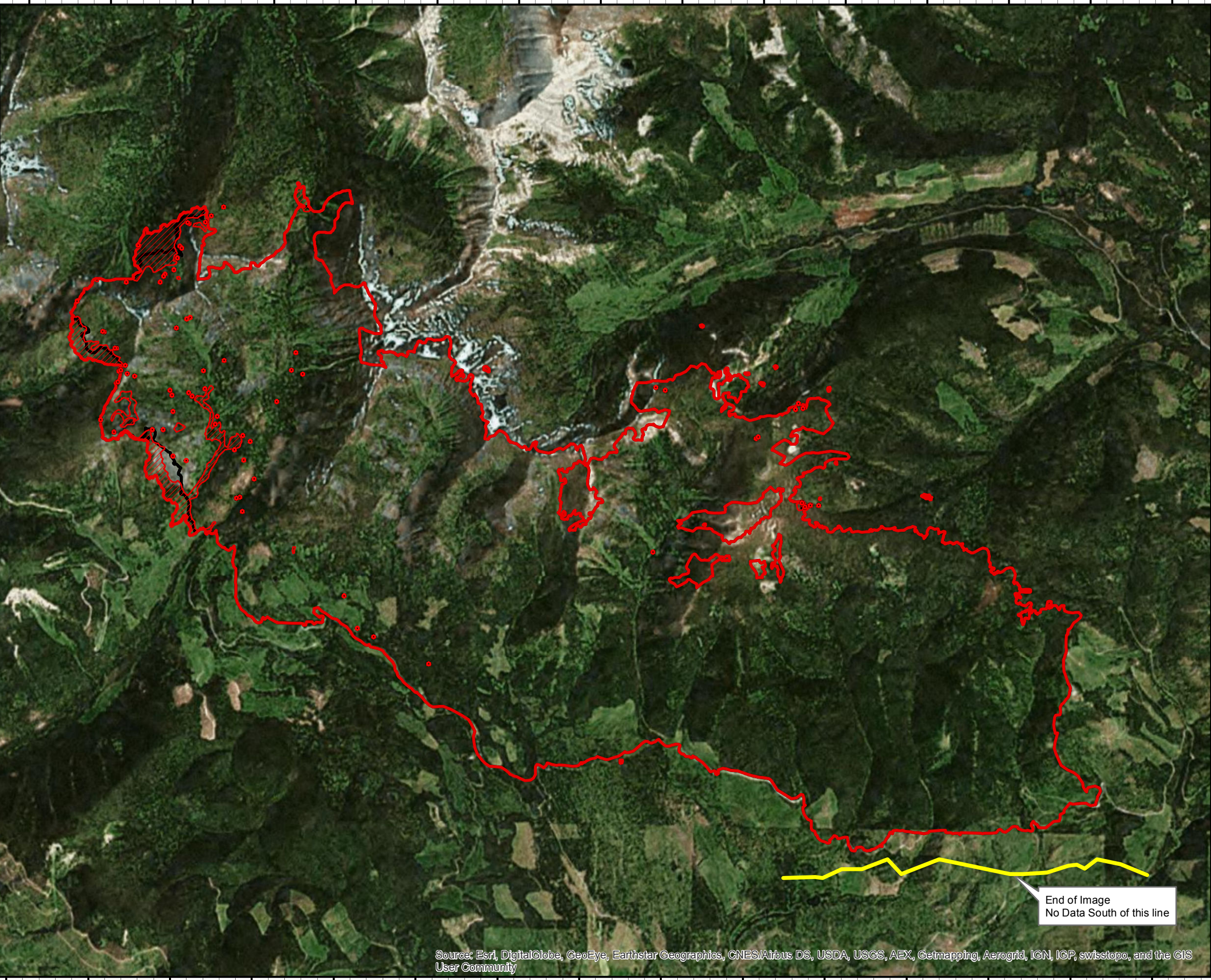
112°55'W 112°54'W 112°53'W 112°52'W 112°51'W 112°50'W 112°49'W 112°48'W 112°47'W 112°46'W 112°45'W 112°44'W 112°43'W 112°42'W 112°41'W 112°40'W 112°39'W 112°38'W 112°37'W

**Infrared Map**  
**Park Creek (MT-HLF-000146)**  
**Map Date: 09/13/2017**  
**Imagery Date: 09/12/2017**  
**Imagery Time: 2230 MDT**  
**IR Interpreted Acres: 17,960 acres**  
**IRIN: Tina Rotenbury**

-  Isolated Heat Sources
-  Heat Perimeter
-  Intense Heat
-  Scattered Heat
-  Previous Heat Perimeter

NAD 1983 UTM Zone 12N

0 0.5 1 1.5 Miles

112 52' 9.911" W  
 47 3' 11.139" N

End of Image  
 No Data South of this line

Source: Esri, DigitalGlobe, GeoEye, Earthstar Geographics, CNES/Airbus DS, USDA, USGS, AEX, Getmapping, Aerogrid, IGN, IGP, swisstopo, and the GIS User Community

112°55'W 112°54'W 112°53'W 112°52'W 112°51'W 112°50'W 112°49'W 112°48'W 112°47'W 112°46'W 112°45'W 112°44'W 112°43'W 112°42'W 112°41'W 112°40'W 112°39'W 112°38'W 112°37'W

47°6'N  
47°5'N  
47°4'N  
47°3'N  
47°2'N  
47°1'N  
47°0'N  
46°59'N

47°7'N  
47°6'N  
47°5'N  
47°4'N  
47°3'N  
47°2'N  
47°1'N  
47°0'N  
46°59'N