


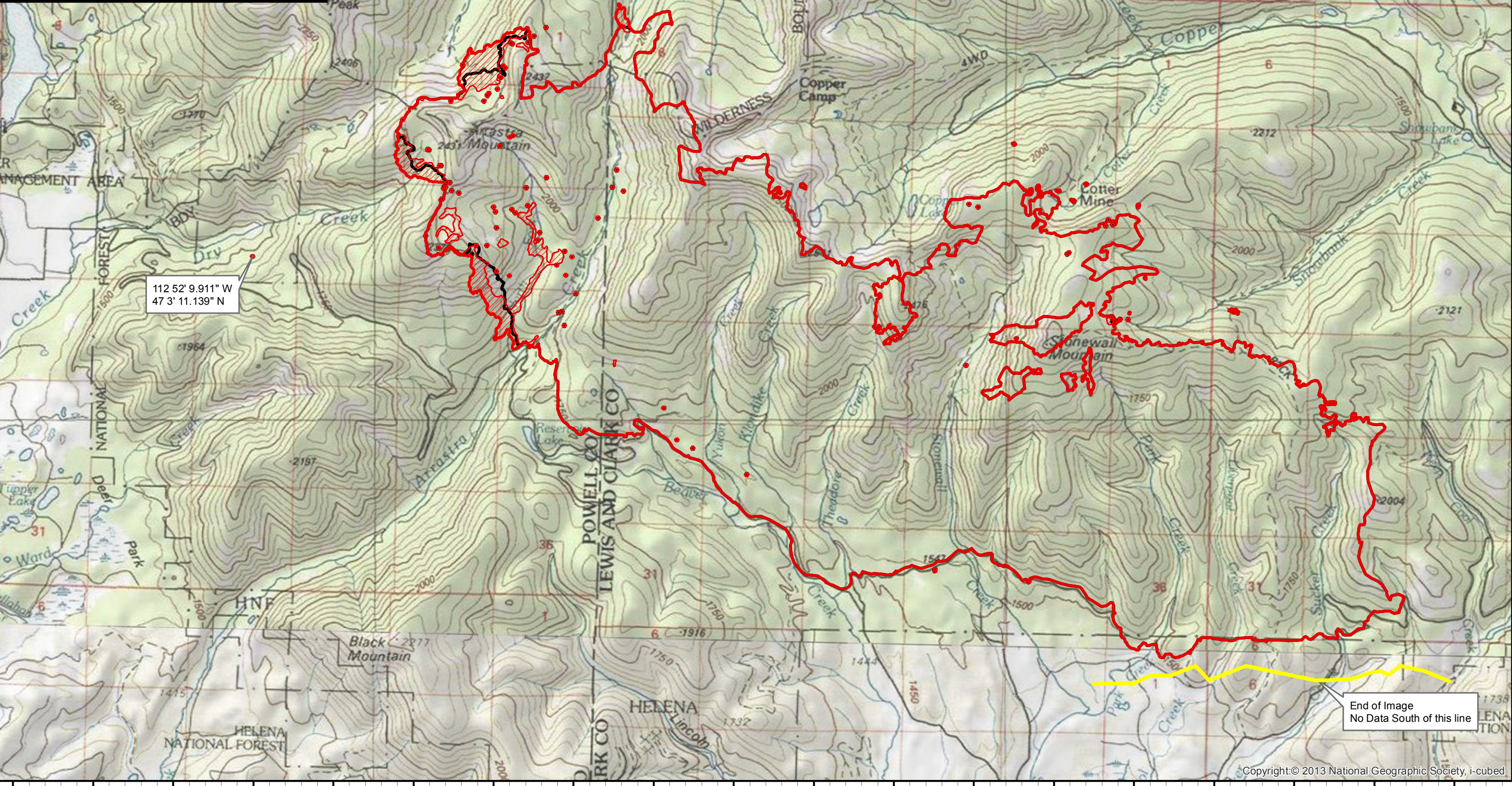
112°55'W 112°54'W 112°53'W 112°52'W 112°51'W 112°50'W 112°49'W 112°48'W 112°47'W 112°46'W 112°45'W 112°44'W 112°43'W 112°42'W 112°41'W 112°40'W 112°39'W 112°38'W 112°37'W

Infrared Map
Park Creek (MT-HLF-000146)
Map Date: 09/13/2017
Imagery Date: 09/12/2017
Imagery Time: 2230 MDT
IR Interpreted Acres: 17,960 acres
IRIN: Tina Rotenbury

- Isolated Heat Sources
- Heat Perimeter
- Intense Heat
- Scattered Heat
- Previous Heat Perimeter

NAD 1983 UTM Zone 12N

0 0.5 1 1.5 Miles

112°52'9.911" W
 47°3'11.139" N

End of Image
 No Data South of this line

112°55'W 112°54'W 112°53'W 112°52'W 112°51'W 112°50'W 112°49'W 112°48'W 112°47'W 112°46'W 112°45'W 112°44'W 112°43'W 112°42'W 112°41'W 112°40'W 112°39'W 112°38'W 112°37'W

47°6'N
47°5'N
47°4'N
47°3'N
47°2'N
47°1'N
47°0'N
46°59'N

47°7'N
47°6'N
47°5'N
47°4'N
47°3'N
47°2'N
47°1'N
47°0'N
46°59'N