

**** CORRECTED ****
Incident Action Plan

Park Creek

MT-HLF-000146 / P1K5M2 0115

Arrastra Creek

MT-HLF-000166 / P1K7CS 0115

Alice Creek

MT-HLF-000179 / P1K7QW 0115



**Helena - Lewis & Clark National Forests
Southern California Incident Management Team #2**

**Incident Commander
Kelly Zombro**

**Day Shift
Sunday, August 06, 2017
0600 - 1800**

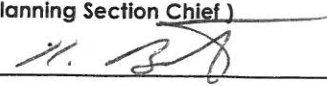

**Night Shift
Sunday, August 06 – Monday, August 07, 2017
1800 - 0700**

Link to MAP on line:



Link to IAP on line:



INCIDENT OBJECTIVES	1. Incident Name Park Creek/Arrastra Creek/Alice Creek	2. Date 08/05/2017	3. Time 1800
4. Operational Period: 08/06-8/07/2017 Operational Period: (Day) 0600 – 1800 (Night) 1800-0700			
<p>LEADERS INTENT: The highest priority is to protect the safety of fire personnel and human life followed by the protection of private property and structures. Strategies and tactical decisions will safely, effectively and efficiently address known and anticipated hazards while providing for the highest probability of success.</p> <p>MANAGEMENT OBJECTIVES:</p> <ul style="list-style-type: none"> • Utilize resources to maximize efficiency and minimize cost expenditures. • Minimize damage to cultural values, threatened and endangered species, archeological sites, and critical habitat within the fire perimeter by providing equipment weed wash and decontamination of Aircraft water buckets. • Provide accurate and timely fire information through interagency and public coordination. • Maintain an initial response capability within the following area: Beaver Creek Rd. to Copper Creek Rd., North to the Scapegoat Wilderness Boundary and West to the Helena Forest Service Boundary. <p>CONTROL OBJECTIVES: In order to minimize damage to infrastructure and critical assets, keep the Fires within:</p> <p>Park Creek / Arrastra Creek</p> <ul style="list-style-type: none"> • East of Arrastra Creek Trail • North of Helena Lewis and Clark Forest Boundary • West of Copper Creek Rd • South of the Snow / Talon fire scar <p>Alice Creek</p> <ul style="list-style-type: none"> • East of Landers Fork • North of Hwy 200 • West of Dearborn River • South of the Continental Divide 			
6. Weather Forecast for Period		See Attached Weather Forecast	
7. General Safety Message:		See Attached Safety Message	
8. Attachments (mark if attached)			
<input checked="" type="checkbox"/> Organization List - ICS 203	<input checked="" type="checkbox"/> Weather Forecast	<input checked="" type="checkbox"/> Safety Message	
<input checked="" type="checkbox"/> Div. Assignment Lists - ICS 204	<input checked="" type="checkbox"/> Fire Behavior Forecast	<input type="checkbox"/> Demob Process	
<input checked="" type="checkbox"/> Communications Plan - ICS 205	<input checked="" type="checkbox"/> Incident Map	<input checked="" type="checkbox"/> Unit Log – ICS 214	
<input checked="" type="checkbox"/> Medical Plan - ICS 206	<input checked="" type="checkbox"/> Air Operations– ICS 220		
9. Prepared by (Planning Section Chief) Ken Bates 		9. Approved by (Incident Commander) Matt Conklin 	



Park Creek/Arrastra Creek Weather Forecast



FORECAST NO: 17

NAME OF FIRE: Park Cr./Arrastra Cr.

PREDICTION FOR: Day **SHIFT**, Sun. 8/06/17
Night **SHIFT**, Sun. PM 8/06/17 to Mon. AM 8/07/17

UNIT: Helena Lewis and Clark NF

SIGNED:

Tom Clemmons

Incident Meteorologist

TIME AND DATE

FORECAST ISSUED: 1900 Aug 05 2017

WEATHER DISCUSSION:

Weak high pressure is forecast to ridge into the area Sunday and Monday with light easterly to northeasterly flow continuing. Max Temperatures are forecast to moderate back closer to normal with RH values dipping into the teens to lower 20s.

WEATHER FORECAST FOR SUNDAY (DAY-SHIFT):

WEATHER: Mostly Sunny. **Inversion breaking between 1030 to 1130.**

TEMPERATURES: Maximum 82-86 below 5500 ft., 72-77 above 5500 ft.

HUMIDITY: Minimum 18-23% below 5500 ft., 25-30% above 5500 ft.

20 FT WINDS: 16-24 mph

RIDGETOP – ENE 6-12 mph with gusts to 18 mph.

SLOPE/VALLEY – ESE 5-10 mph with gusts to 18 mph.

HAINES INDEX: 3 Low **LAL:** 1

WEATHER FORECAST FOR SUNDAY NIGHT (NIGHT-SHIFT):

WEATHER: Mostly clear. Thermal belt setting up between 5500' to 6500'.

TEMPERATURES: Minimum 39-43 below 5500 ft., 50-54 mid-slopes and ridges.

HUMIDITY: Maximum 93-100% in drainage bottoms, 52-56% on mid-slopes/ridges.

20 FT WINDS:

RIDGETOP – ENE 8-12 mph with gusts to 18 mph.

SLOPE/VALLEY – NE 5-9 mph with gusts to 16 mph, becoming drainage winds after midnight.

LAL: 1.

OUTLOOK FOR MONDAY:

Mostly Sunny. **Inversion breaking between 1030 to 1130.** Highs 83-88 below 5500 ft., 75-80 above 5500 ft. Min RH 17-24%. Winds: Slope/Valley – Upslope/Up-valley winds 4-8 mph and gusty, becoming ENE 7-14 mph with gusts to 20 mph in the afternoon. Ridgetop – ENE 10-15 mph with gusts 15 mph.

Haines Index: 4 Low **LAL:** 1

EXTENDED FORECAST (TUESDAY to THURSDAY):

Late Monday early Tuesday: Another cold front comes through the area helping to cool the Max temps down 4-8 degree with RH values from 15-21%. NNW winds 11-16 mph gusts up to 20 mph. 20% chance of afternoon thunderstorms. **Gusty & Variable Thunderstorm Outflow Winds Possible.**

Wednesday-Thursday: The area continues to sit east of an upper level high pressure ridge. A weak and stationary frontal boundary is forecast to sit along the front range of the northern Rockies. Weak instability and moisture along this boundary will allow for a 20% chance of afternoon and evening thunderstorms. For this forecast period: Max Temps 77-87; and NNE winds 5-15 mph; Min RH's from 16-22 percent.

FIRE BEHAVIOR FORECAST

FORECAST NUMBER: #20	TYPE OF FIRE: Wildland Fire
FIRE NAME: Park Creek/Arrastra Creek/Alice Creek	OPERATIONAL PERIOD: Day/Night: 08/06/17-08/08/2017
DATE ISSUED: 08/05/17	TIME ISSUED: 1900 hrs
UNIT: Lincoln RD/Helena-Lewis and Clark NF/MT	SIGNED: Risa Lange-Navarro, FBAN; Andy Pascarella, FBAN(t) <i>Risa Lange-Navarro</i> <i>Andy J. Pascarella</i>

INPUTS

WEATHER SUMMARY: See Attached Spot Weather Forecast for further information.
Lincoln/Augusta/Choteau FDRA #1 ERC **Observed** for 08/05/17 **55-VERY HIGH – 74th Percentile**

FIRE BEHAVIOR	OUTPUTS
----------------------	----------------

GENERAL:

- Fuel type is mostly mixed conifer with heavy standing dead bug-kill, and heavy dead/down. Heavy fuels ignite and burn out, cured grass and shrub fuels burn, and green grassy fuels cure and burn. In places, green drainages are now burning and may not serve as a barrier. --Fuel models 2, 8, 9 & 10. --Measured 1000 hr fuel moistures 8-14%.
- Topography consists of steep, rocky, deep drainages.
- Fire behavior has been active surface fire (creeping, smoldering, backing, flanking, and torching) in heavy dead and down fuels, standing bug-killed snags/red-neededled bug-killed trees with single/group torching trees & short duration crown runs, especially on S/SW slopes. Fire backing downslope is causing rollouts and slope reversals. Head fire should be expected upon slope reversal. Younger regen units are becoming available to burn. Reburn potential is high throughout the fire areas. Spotting distance up to ½ mile, expect further distance if sustained strong winds.
- Estimated Rates of Spread (ROS): Head ROS in Fuel model 2: 21 ch/hr, Fuel model 8: 2 ch/hr, Fuel model 9: 9 ch/hr & Fuel Model 10: 9 ch/hr. Backing ROS <1.5 ch/hr, FLs <1.5 ft. Expect higher rates-of-spread with gusty winds.
- Flame Lengths (FL) Fuel model 2: 5 ft, Fuel model 8: <1.5 ft, Fuel model 9: 3 ft, Fuel model 10: 6 ft.
- Snow-Talon fire scar area ROS <1 ch/hr, FLs <4 ft in scattered jackpots of 100hr /1000hr fuels.
- Burn period has been from 0800-1900 hrs with peak from about 1330-1800 hrs.
- Probability of Ignition on unshaded south aspects with fine dead fuel moisture of 4% +/- 76%, 5% +/- 66%

SPECIFIC: Ensure posted lookouts are in a good safe spot where they can observe the fire activity & weather. Take hourly weather observations, email them (phillip.manuel@noaa.gov) or bring them to ICP at end of shift.

Arrastra Cr Div G: Recent active parts of the fire will continue to smolder and creep with occasional torching as fuels burn out. Roll out is still possible and could continue to roll across the Arrastra trail, the 4106 D1 Rd and the Beaver Creek Rd. The fire over the clipper line on Tuesday still has potential to rollout and spot between the 4106 D1 and the Beaver Creek Rd., and is active near the hand line put in on the southeastern flank.

Arrastra Cr Div D: Fire continues to move into the Stonewall Creek drainage from the ridge just west, backing and flanking. The area burning in the SW corner of the Section 28, near the 607 C Rd also continues to actively back, flank, and spot/rollout below itself. East of Thursday's burnout operation, there is plenty of unburned fuel still between your line and the fire.

Park Cr Div A: Recent active parts of the fire will continue to smolder and creep as fuels burn out. On the west end of the division, fire continues to back/flank with moderate intensity into the unnamed drainage east of Stonewall. Watch for any additional rollout and spots south of the fire perimeter on state land.

Park Cr Div Z: Recent active parts of the fire will continue to smolder and creep as fuels burn out, especially in Liverpool Creek. Continue to monitor the area for any spot fires from the recent fire activity and burnout operations.

Alice Cr DIV S: Northeast side of the fire is the active side, holding heat, burning in duff and heavy fuels.

IA: Fires have the potential to go big fast with heavy, dead/downed fuels, ladder fuels, dead standing fuels and now live fuels becoming available, especially with predicted low RHs, gusty winds, and high ERC. Size up the fire behavior before engaging.

Night Shift: Thermal belt setting up between 5500' to 6500'. Fire from recent burnout operations can be expected to continue to burn out heavy fuels and green interior patches. Fire weakened trees may fall with downslope winds. Watch for rollout anywhere lines are underslung. Spots may still be out there from recent burnout operations. Overall fire activity decreasing around 2200 hrs.

AIR OPERATIONS: Smoky conditions with inversion usually lifting after 0900 hrs. Wind shifted to the NNE and gusty.

Watchout Situation # 4: Unfamiliar with weather and local factors influencing fire behavior ...

Watch for alignment of slope, winds and fuels for most active fire behavior.

Develop trigger points for your disengagement if fire behavior threatens your safety.

PLEASE GIVE FEEDBACK, it's greatly appreciated!

ASSIGNMENT LIST

1. Branch

2. Division/Group

A

3. Incident Name

Park Creek

4. Operational Period

Date: 08/06/2017

Time: 0600 - 1800

5. Operations Personnel

Operations Chief

Corey Rose, Jim Snow(t)

Division/Group Supervisor

Brian Gilmore

Branch Director

Air Support Group Supervisor

6. Resources Assigned This Period

Strike Team/Task Force/ Resource Designator	Last Shift	Leader	No. Pers.	Trans. Needed	Drop Off PT./Time	Pick Up PT./Time
C-5 HC2I Grayback 12B *(Avail I/A)	8/10	Adam Babbitt	20	N	DP10 0600	ICP 1800
C-13 HC2 Fort Belknap	8/12	Vincent Bradley	20	N	DP10 0600	ICP 1800
E-20 WTS2 Freezeout Lk Fire	8/15	B Watson	1	N	DP10 0600	ICP 1800
E-30 ENG6 New Mexico 41	8/07	Eugene Pino	3	N	DP10 0600	ICP 1800
E-35 ENG6 Chaffee County FPD	8/14	Kevin McConaughay	3	N	DP10 0600	ICP 1800
E-71 ENG6 Missoula City	8/18	Kory Garmin	2	N	DP10 0600	ICP 1800
E-97 SKG	8/13	Rob Brown	2	N	DP10 0600	ICP 1800
O-15 SOFR **(Avail to A/Z)	8/9	Jeff Kerr	1	N	DP10 0600	ICP 1800
O-23 TFLD	8/11	Eric Brown	1	N	DP10 0600	ICP 1800
O-28 EMPF	8/7	Wallace	1	N	DP10 0600	ICP 1800
O-33 TFLD <i>extended 8/22</i>	8/8	Gary Wright	1	N	DP10 0600	ICP 1800
E-32 AMBULANCE Lincoln	8/13	Jeremy Gilliam	2	N	DP10 0600	ICP 1800
<i>E63 ForW</i>	<i>8/8</i>	<i>mote</i>				

7. Control Operations

Task: Continue Structure Protection. Continue to hold fire along the road, hand lines and clipper lines. Mop up and remove heat along the lines. Utilize burn out as appropriate to contain fire along the control lines to the west in Stonewall Creek.

Purpose: Create an effective fuel break while reducing the snag exposure to ground resources.

End State: Keep the fire on NF land, north of the 607 Park Creek Road and Beaver Creek Road 4106 to prevent loss of structures in Stonewall Creek and Beaver Creek area.

8. Special Instructions

*Available for IA: C-5 T2IA Grayback 12B

**Available to Division A and Z: O-15 SOFR

0-9 8/6 Mike Martin

9. Communications

Function	Frequency - RX	Frequency - TX	Tone	Channel	Comments
Command	See Reverse				

Prepared by (RESL)

Kevin Fetterman *KWF*

Approved by (PSC)


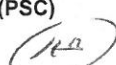
Ken Bates *(KB)*

Date

08/05/2017

Time

1900

ASSIGNMENT LIST		1. Branch	2. Division/Group			
3. Incident Name		Park Creek		4. Operational Period		Z
				Date: 08/06/2017		Time: 0600 - 1800
5. Operations Personnel						
Operations Chief	Corey Rose, Jim Snow(t)		Division/Group Supervisor	Robb Noxon		
Branch Director			Air Support Group Supervisor			
6. Resources Assigned This Period						
Strike Team/Task Force/ Resource Designator	Last Shift	Leader	No. Pers.	Trans. Needed	Drop Off PT./Time	Pick Up PT./Time
C-12 HC2 Franco	8/9	Noe Franco	20	N	DP2 0600	ICP 1800
E-26 ENG6 Flame Chaser	8/11	Karl Peso	3	N	DP2 0600	ICP 1800
E-54 WTS2 Dave Hoback	8/17	Chuck Orr	1	N	DP2 0600	ICP 1800
E-92 SKG2	8/12	Eric Depee	2	N	DP2 0600	ICP 1800
E-105 ENG6 Brush 58 *(Avail For I/A)	8/06	Todd Weiler	4	N	DP2 0600	ICP 1800
O-109 TFLD	8/12	Dustin Krohn	1	N	DP2 0600	ICP 1800
O-10 TFLD	8/6	Anthony Sigona	1	N	DP2 0600	ICP 1800
O-15 SOFR ***(Avail to A/Z)	8/9	Jeff Kerr	1	N	DP2 0600	ICP 1800
O-117 EMTF	8/14	Christopher Lacy	1	N	DP2 0600	ICP 1800
7. Control Operations						
<p>Task: Continue structure protection. Continue to hold and improve the control lines. Mop up the slop over on state land.</p> <p>Purpose: Create an effective fuel break while reducing the snag exposure to ground resources.</p> <p>End State: Keep the fire on NF land North of Sucker Creek Road 1800 and West of Copper Creek Road 330.</p>						
8. Special Instructions						
<p>*Available for I/A: E-105 T6 ENG Brush 58 **Available to Division A and Z: O-15 SOFR</p>						
9. Communications						
Function	Frequency - RX	Frequency - TX	Tone	Channel	Comments	
Command	See Reverse					
Prepared by (RESL) Kevin Fetterman 		Approved by (PSC) Ken Bates 		Date 08/05/2017		Time 1900

ASSIGNMENT LIST			1. Branch		2. Division/Group		
					D		
3. Incident Name Arrastra Creek			4. Operational Period Date: 08/06/2017		Time: 0600 - 1800		
5. Operations Personnel							
Operations Chief		Corey Rose, Jim Snow(t)		Division/Group Supervisor		Temo Baltazar, Nick Schreiner (t) (8/7)	
Branch Director				Air Support Group Supervisor			
6. Resources Assigned This Period							
Strike Team/Task Force/ Resource Designator	Last Shift	Leader	No.	Trans. Needed	Drop Off PT./Time	Pick Up PT./Time	
C-11 HC2I Wenatchee River	8/9	Matt Kennedy	20	N	DP20 0600	ICP 1800	
C-18 HC2 North Pacific Forestry	8/16	Juan Rivera	20	N	DP20 0600	ICP 1800	
E-17 ENG6 Troy, ID, #002	8/19	Mark Bennett	3	N	DP20 0600	ICP 1800	
E-31 ENG6 Rockey Mnt Fire	8/12	Pat Marnin	3	N	DP20 0600	ICP 1800	
E-31 DOZ2 Thompson *(Avail I/A)	8/20	Frank Thompson	2	N	DP20 0600	ICP 1800	
E-48 LOG TRK Thomas <i>Moved to</i>	8/8	Joe Thomas	1	N	DP20 0600	ICP 1800	
E-52 WTS2 MOMS <i>FA</i>	8/17	Charles Weber	1	N	DP20 0600	ICP 1800	
E-63 FORW Mote Logging <i>Moved to</i>	8/8	Mote	1	N	DP20 0600	ICP 1800	
E-65 EXCA	8/16	Stalnaker	1	N	DP20 0600	ICP 1800	
E-69 ENG6 Sagle FD *(Avail I/A)	8/9	Hanson	2	N	DP20 0600	ICP 1800	
E-76 ENG6 DS FIRE *(Avail I/A)	8/17	Billie Smock	3	N	DP20 0600	ICP 1800	
E-121 ENG6 R Construction	8/16	Michael Little Dog	3	N	DP20 0600	ICP 1800	
O-8 TFLD	8/7	Mike Blake	1	N	DP20 0600	ICP 1800	
O-9 TFLD <i>Moved to A</i> *(Avail I/A)	8/6	Mike Martin	1	N	DP20 0600	ICP 1800	
O-11 TFLD	8/6	Benjamin Stewart	1	N	DP20 0600	ICP 1800	
O-18 TFLD (T) *(Avail I/A)	8/8	Linda-Lu Gibson	1	N	DP20 0600	ICP 1800	
O-85 EMTF	8/10	Ray Mines	1	N	DP20 0600	ICP 1800	
O-127 HEQB (T)	8/13	Kevin Tveidt	1	N	DP20 0600	ICP 1800	
O-135 SOF2 ** (Avail to B/C)	8/15	Tim Oliverius	1	N	DP20 0600	ICP 1800	
MODULE T2 Plains	8/16	Taylor Firestone	5	N	DP20 0600	ICP 1800	
7. Control Operations							
<p>Task: Continue to use equipment on the Stonewall Creek road 607E. Prepare for potential burn out between Klondike and Yukon creeks along the Beaver creek road. Continue to hold between Yukon and the B/C break.</p> <p>Purpose: Create an effective fuel break while reducing the snag exposure to ground resources.</p> <p>End State: Keep fire on NF land, North of the 607 Park Creek Road and Beaver Creek Road 4106.</p>							
8. Special Instructions							
<p>*Available for I/A: O-9 TFLD Mike Martin, O-18 TFLD Gibson (T), E-69 T6 ENG Sagle FD, E-76 T6 ENG DS FIRE E-31 T2 Dozer Thompson **Available to Division B and C: O-135 SOF2</p>							
9. Communications							
Function	Frequency - RX	Frequency - TX	Tone	Channel	Comments		
Command	See Reverse						
Prepared by (RESL) Kevin Fetterman <i>KMF</i>		Approved by (PSC) Ken Bates <i>KB</i>		Date 08/04/2017		Time 2200	

ASSIGNMENT LIST			1. Branch		2. Division/Group		
3. Incident Name Arrastra Creek			4. Operational Period Date: 08/06/2017		Time: 0600 - 1800		
5. Operations Personnel							
Operations Chief Corey Rose, Jim Snow(t)		Division/Group Supervisor ^{John} Brian Ownings, Craig Roach (8/15), Hal Stevens (8/17)					
Branch Director		Air Support Group Supervisor					
6. Resources Assigned This Period							
Strike Team/Task Force/ Resource Designator	Last Shift	Leader	No. Pers.	Trans. Needed	Drop Off PT./Time	Pick Up PT./Time	
C-6 HC2I Mnic's 1	8/12	Bill Alleman	20	N	DP21 0600	ICP 1800	
C-16 HC2 R&R Contracting	8/15	Victor Rocha	20	N	DP21 0600	ICP 1800	
E-4 SKD2	8/15	Josh Doble	2	N	DP21 0600	ICP 1800	
E-6 SKD2	8/15	Aaron Head	2	N	DP21 0600	ICP 1800	
E-32 ENG6 Engine 310	8/7	Adam Tieman	3	N	DP21 0600	ICP 1800	
E-37 WTS2 Castle Mountain	8/15	Bob Bastrop	1	N	DP21 0600	ICP 1800	
E-112 ENG3 Fire Suppression	8/15	Rob Vagnal	3	N	DP21 0600	ICP 1800	
E-116 WTS3 Wildland Waters	8/15	Steven Racewicz	1	N	DP21 0600	ICP 1800	
E-120 ENG6 Flame Chaser #2	8/16	Edwin Hall	3	N	DP21 0600	ICP 1800	
E-124 ENG6 Solomon Fire Eqp	8/16	Harvey Morsette	3	N	DP21 0600	ICP 1800	
O-44 TFLD	8/17	Rob Berney	1	N	DP21 0600	ICP 1800	
O-38 MODULE Columbine WFM	8/16	Britton Quinlan	10	N	DP21 0600	ICP 1800	
O-42 TFLD	8/16	Greg Schenk	1	N	DP21 0600	ICP 1800	
O-104 AEMF	8/10	Isaac Richards	1	N	DP21 0600	ICP 1800	
O-135 SOF2 ** (Avail to B/C)	8/15	Tim Oliverius	1	N	DP21 0600	ICP 1800	
7. Control Operations							
Task: Continue to hold and mop up along the clipper line and the Beaver Creek road 4106 and the slop over in the southwest corner.							
Purpose: Create an effective fuel break while reducing the snag threat to ground resources.							
End State: Keep fire on NF land North of the Beaver Creek road 4106.							
8. Special Instructions							
**Available to Division B and C: O-135 SOF2							
C10 Palomar IHC <u>LWO?</u>							
9. Communications							
Function	Frequency - RX	Frequency - TX	Tone	Channel	Comments		
Command	See Reverse						
Prepared by (RESL) Kevin Fetterman <i>KMP</i>		Approved by (PSC) Ken Bates <i>KB</i>		Date 08/05/2017	Time 1900		

ASSIGNMENT LIST			1. Branch		2. Division/Group		
3. Incident Name Park Creek			4. Operational Period Date: 08/06/2017		IA Time: 0600 - 1800		
5. Operations Personnel							
Operations Chief		Corey Rose, Jim Snow (t)		Division/Group Supervisor		Albert Ward	
Branch Director				Air Support Group Supervisor			
6. Resources Assigned This Period							
Strike Team/Task Force/ Resource Designator	Last Shift	Leader	No. Pers.	Trans. Needed	Drop Off PT./Time	Pick Up PT./Time	
E-29 ENG6 New Mexico	8/14	Cody Alcon	3	N	ICP 0600	ICP 1800	
E-122 ENG6 Solomon Fire #2	8/16	Ivan Wing	3	N	ICP 0600	ICP 1800	
E-123 ENG6 GIST Enterprises	8/16	Robert Mittal	3	N	ICP 0600	ICP 1800	
E-2 FEL2	8/15	John Ward	2	N	ICP 0600	ICP 1800	
E-49 DOZ2 Conifer	8/14	Cloninger	2	N	ICP 0600	ICP 1800	
E-95 PROCESSER Mote	8/8	Mark D'Avis	1	N	ICP 0600	ICP 1800	
E48 Log truck	8/8	Joe Thomas					
0-8 TFLD	8/7	Mike Blake					
0-127 HEQA(+)	8/13	Kevin Treidt					
7. Control Operations							
Task: Continue to be available and ready for I/A within response area or to assist the district with I/A outside the I/A response area.							
Purpose: Maintain an effective I/A resource in supporting the zone.							
End State: Be effective with I/A in supporting the zone.							
8. Special Instructions							
9. Communications							
Function	Frequency - RX	Frequency - TX	Tone	Channel	Comments		
Command	See Reverse						
Prepared by (RESL) Kevin Fetterman		Approved by (PSC) Ken Bates		Date 08/05/2017		Time 1900	

ASSIGNMENT LIST			1. Branch	2. Division/Group			
3. Incident Name Arrastra Creek/Park Creek			4. Operational Period Date: 08/06 - 08/07/2017		Night Shift Time: 1800 - 0700		
5. Operations Personnel							
Operations Chief		Corey Rose, Jim Snow (t)		Division/Group Supervisor		Todd Wood	
Branch Director				Air Support Group Supervisor			
6. Resources Assigned This Period							
Strike Team/Task Force/ Resource Designator	Last Shift	Leader	No. Pers.	Trans. Needed	Drop Off PT./Time	Pick Up PT./Time	
E-14 ENG6 Rocky Mtn Fire #7	8/7	Jerald White <i>offe</i>	3	N	ICP 1800	ICP 0700 <i>2400</i>	
E-15 ENG6 Rocky Mtn Fire #3	8/7	Corey Nunnely	3	N	ICP 1800	ICP 0700 <i>2400</i>	
E-18 ENG6 Troy, ID, #003 <i>(8/20)</i>	8/6	Den Hokanson <i>Brian</i>	3	N	ICP 1800	ICP 0700	
E-28 ENG6 Hot Springs RFD	8/11	Ruben Loberg	2	N	ICP 1800	ICP 0700	
E-33 ENG6 Castle Mountain 13	8/15	Darren Namingha	3	N	ICP 1800	ICP 0700	
E-34 ENG6 Eng 671	8/14	Tavaris Evans	3	N	ICP 1800	ICP 0700	
E-106 ENG6 Great Falls	8/12	John Billeter	3	N	ICP 1800	ICP 0700	
E-109 ENG6 Peanut Pie #2	8/14	Ray Moore	3	N	ICP 1800	ICP 0700	
E-111 ENG6 Peanut Pie	8/14	Lawrence Sullivan	3	N	ICP 1800	ICP 0700	
O-39 TFLD	8/15	Brian Pitts	1	N	ICP 1800	ICP 0700	
O-115 EMTF	8/11	Will Charlton	1	N	ICP 1800	ICP 0700	
O-116 EMTF	8/13	Joy Ballew	1	N	ICP 1800	ICP 0700	
O-55 SOF2	8/7	Russ Groves	1	N	ICP 1800	ICP 0700	
7. Control Operations							
Task: Patrol and hold along any divisions where the fire has backed down to the road or where burn-out has occurred.							
Purpose: Reduce the potential of fire crossing the Sucker Creek, Park Creek, and Beaver Creek roads.							
End State: Keep the fire on the National Forest north of the state and private property to the south and east.							
8. Special Instructions							
9. Communications							
Function	Frequency - RX	Frequency - TX	Tone	Channel	Comments		
Command	See Reverse						
Prepared by (RESL) Kevin Fetterman <i>KMP</i>		Approved by (PSC) Ken Bates <i>KA</i>		Date 08/05/2017	Time 1900		

ASSIGNMENT LIST				1. Branch		2. Division/Group	
3. Incident Name Alice Creek				4. Operational Period Date: 08/06/2017		Time: 0600 - 1800	
5. Operations Personnel							
Operations Chief		Corey Rose, Jim Snow (t)		Division/Group Supervisor		Jesse Montijo	
Branch Director				Air Support Group Supervisor			
6. Resources Assigned This Period							
Strike Team/Task Force/ Resource Designator	Last Shift	Leader	No.	Trans. Needed	Drop Off PT./Time	Pick Up PT./Time	
O-140 MODULE T1 Black Hills	8/15	Lee Duecker	8	N	H-3 0600	ICP 1800	
O-37 Module SW Saguaro	8/16	Jay Yancick	9	N	H-3 0600	ICP 1800	
7. Control Operations							
<p>Improve line on South end of the fire to prevent fire spread further to the South. Scout and locate potential line locations on the West, North, and East sides of the fire.</p>							
8. Special Instructions							
<p>Day resources spiked on the line utilize caution with live snags, dead snags, and bears.</p> <p>Franco Crew to walk out and return to ICP with gear to be slung out.</p>							
9. Communications							
Function	Frequency - RX	Frequency - TX	Tone	Channel	Comments		
Command	See Reverse						
Prepared by (RESL) Kevin Fetterman <i>[Signature]</i>		Approved by (PSC) Ken Bates <i>[Signature]</i>		Date 08/05/2017		Time 1900	

AIR OPERATIONS SUMMARY

Prepared By: JoAnn Overacker
JoAnn Overacker

Prepared Date 08/05/2017

Prepared Time: 1900

1. INCIDENT NAME: Park Creek / Arrastra Creek/Alice		2. OPS PERIOD DATE: 08/06/2017		START TIME: 0600	END TIME: 2100	SUNRISE: 0615	SUNSET: 2059		
3. REMARKS (Safety Notes, Hazards, Air Operations, Special Equipment, etc.) Lincoln Airport (S69) 46° 57.315' x 112° 39.110' 122.9 Reservoir Lake 47° 01.717' x 112° 48.682' Mill Pond 46° 59.411' x 112° 38.943' Beaver Pond 46° 59.533' x 112° 41.160'				4. READY ALERT AIRCRAFT MEDEVAC- N401HQ I.A. - N401HQ				5. TFR NOTAM 7/0042 5.0 nMile radius to 11,000 ft	

6. PERSONNEL	NAME	PHONE #	7. FREQUENCIES	AM	FM	8. FIXED-WING- Type/ Make-Model/ N#/ Base
AOBD			AIR/ AIR FW FM Air Tactics	####		AIRTANKERS - <u>Ordered by OPS</u>
ASGS	JoAnn Overacker	209-559-1617	AIR/ AIR	118.4250		LEAD PLANES- <u>Ordered by OPS</u>
ATGS			Local IA A/G Freqs. A/G 66 A/G Yellow	HNF Yellow(IA)	166.6750 151.220	No Air Attack assigned. Request AA through Operations.
HEB2	Jim Dotson (8/09)		A/G Primary A/G Secondary	Park Cr Fire Arrastra	166.9625 169.9875	Request buckets through Division to Helibase.
414	Enrique Olivares (8/13)	###	COMMAND	Rx		CG 127.9
N401HQ	Brian Butler (HLF)	HLF NF Type-III	DNRC IA FREQS	124.975		
N214B		###	Tan Air Medivac	RX 155.3400	TX 155.340	Medevac Site
3598D	NatalieBench(813)	###	Air Guard	RX 168.625	TX 168.625	CG 110.9
804PJ	Joel Anderson	Assigned to Alice	National FF	CG 110.9	168.650 rx/tx	Helena Dispatch 406-444-4242

9. HELICOPTERS (Use Additional Sheets as Necessary)

FAA N#	TY	MAKE/ MODEL	BASE	AVAIL	START	REMARKS	FAA N#	TY	MAKE/ MODEL	BASE	AVAIL	START	REMARKS
N401HQ	3	AS350B3	Lincoln	0830	0800	IA/short haul	3598D	3	AS350B2	Lincoln	0830	0800	Recon
N214B	2	B214	Lincoln	0830	0800	BUCKET							
804PJ	1	UH-60A	Lincoln	0830	0800	BUCKET							
414	1	Kamax	Lincoln	0830	0800	BUCKET							

10. TASK/ MISSION/ ASSIGNMENT (Type/ function includes: Air Tactical, Retardant, Recon, Personnel Transport, Bucket Operations, SAR, etc.)

TYPE/FUNCTION	NAME OF PERSONNEL OR CARGO (if applicable) or instructions for tactical aircraft	MISSION START	FLY FROM	FLY TO
Bucket Work		As Needed		
Recon	Operations Fire Behavior/Plans	1000 1300	Helibase Helibase	Park Ck/Arrastra Ck Park Ck/Arrastra Ck
Cargo	Fly type 2 crews gear off Alice Creek Fire.	0900	Alice Creek	Helibase
Crew Shuttle	Fly Black Hills FUM and gear/food to Alice creek (8 crewmembers)	Early Afternoon	Helibase	Alice Creek

Park Creek / Arrastra Creek / Alice Creek Incident

BEAR SAFETY

Camp Precaution

Always leave a clean camp.

Store odorous items such as food, coolers, utensils and toiletries in a hard-sided vehicle or food locker.

Backcountry and Trail Precautions

Never surprise bears! If you're hiking, make your presence known. Make noise by talking loudly, singing, or wearing a bell. If you can, travel with a group. Groups are noisier and easier for bears to detect.

Keep in mind that bears tend to be more active at dawn and dusk. Keep an eye out for tracks, scat, digs, and trees that bears have rubbed.

What to Do if You Encounter a Bear

If you encounter a bear, you should try to remain calm and avoid sudden movements.

Give the bear plenty of room, allowing it to continue its activities undisturbed. If it changes its behavior, you're too close, so back away.

If you see a bear but the bear doesn't see you, detour quickly and quietly. If a bear spots you, try to get its attention while it is still farther away. You want it to know you're human, so talk in a normal voice and wave your arms. You can throw something onto the ground (like your camera) if the bear pursues you, as it may be distracted by this and allow you to escape. However, you should never feed or throw food to a bear.

Remember that a standing bear is not always a sign of aggression. Many times, bears will stand to get a better view.

What to Do if a Bear Charges

Remember that many bears charge as a bluff. They may run, then veer off or stop abruptly.

Stand your ground until the bear stops, then slowly back away. Never run from a bear! They will chase you, and bears can run faster than 30 mph.

Don't run towards or climb a tree. Black bears and some grizzlies can climb trees, and many bears will be provoked to chase you if they see you climbing.

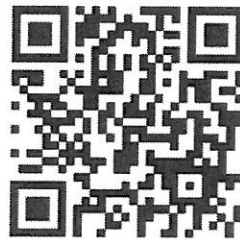
Jen Ryan (REAF)

Kate Condon (t)



The trainee of today will train the future of tomorrow.

Take advantage now and do it right!



Trainees and evaluators don't wait till the last minute utilize above QR code or fill out this form and drop it off with the TNSP located in the check-in yurt.

All incident trainees needed to check out with training prior to DMOB; a completed performance rating (ICS 255) and an Evaluation Record is needed.

TRAINEE's DATA

Name (PRINT): _____ ICS Trainee Position: _____

Request # (A,C,E,or O): _____ Agency Designator (Ex. CA-MNF): _____

USFS___ State___ BLM___ BIA___ NPS___ FWS___ Local Govt. ___ DOD___ NWS___

Date Assigned: _____ Cell Phone: _____

TRAINING RECORDS TO BE EMAILED TO: (Chief, Training Officer, ect)

Name: _____ Email: _____

TRAINER/EVALUATOR DATA

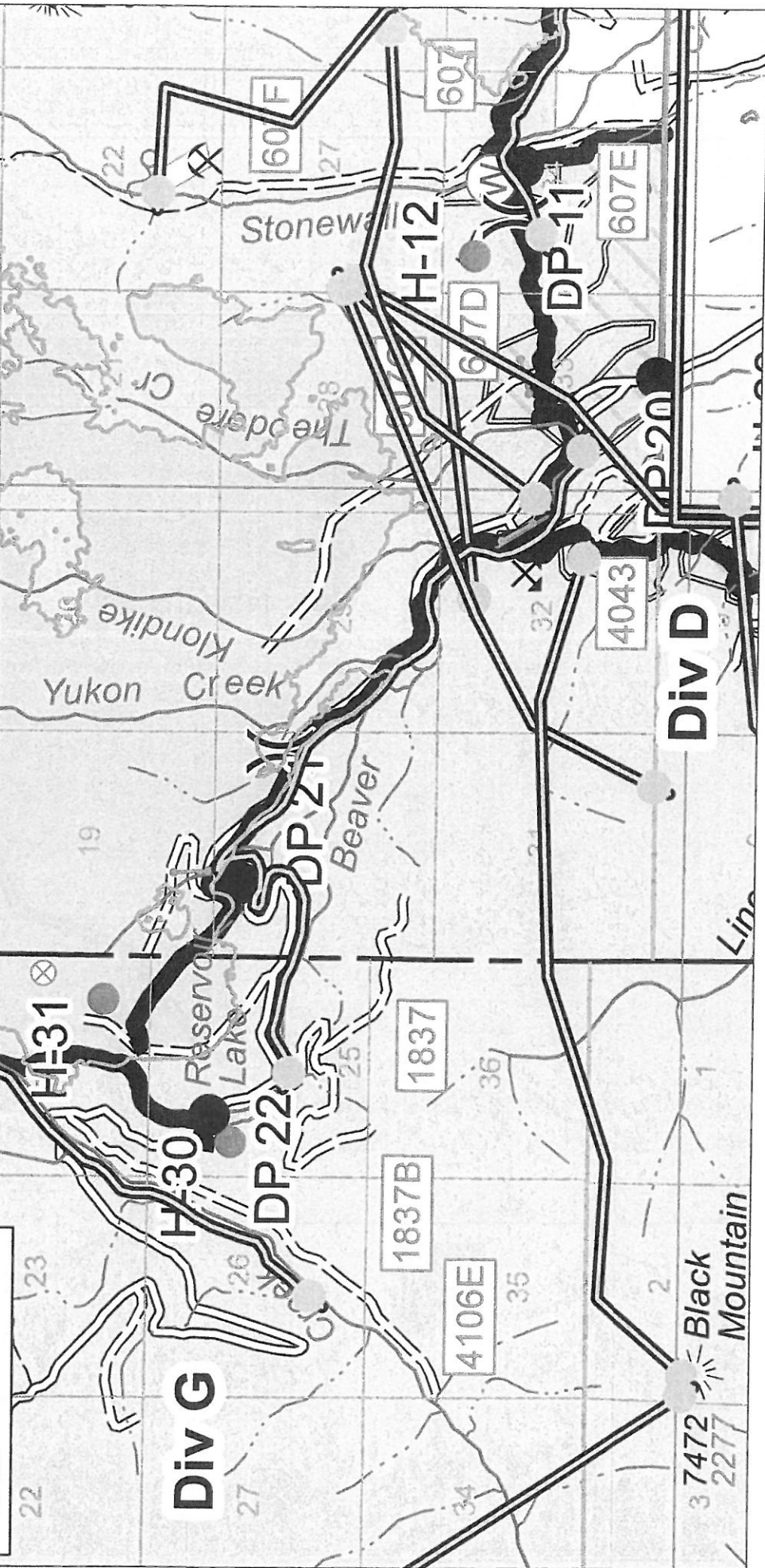
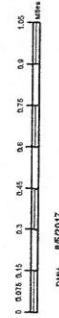
Trainer/Evaluator Name: _____ ICS position on fire _____

Agency Designator(ex. CA-MNF): _____ Phone: _____

Arrastra Creek Fire
 MT-HLF-000146
 IAP Map
 06 August 2017

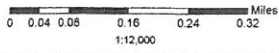
Legend

- Repeaters
- Kestrel Weather Station
- Drop Point
- Helispot
- Fire Origin
- Water Source
- Division Break
- Completed Dozer Line
- Completed Line
- Proposed Dozer Line
- Fire Perimeter



Alice Creek Fire - 8/6-7/17

MT-HLF-000179



- Legend**
- SilverKing_DoSite
 - Wilderness_DipSite
 - Uncontrolled Fireline
 - Projected Old Growth 090117
 - Trails
 - Historical District
 - MAP1
 - MAP2
 - MAP3
 - MAP4
 - MAP5
 - MAP6
 - MAP7
 - Wilderness Areas
 - Administrative Boundary
 - Contours - 200 Foot
 - Private Lands

