

\* Corrected \*

# Incident Action Plan

## Park Creek

MT-HLF-000146 / P1K5M2 0115

## Arrastra Creek

MT-HLF-000166 / P1K7CS 0115

## Alice Creek

MT-HLF-000179 / P1K7QW 0115



### Helena - Lewis & Clark National Forests Southern California Incident Management Team #2

**Incident Commander  
Kelly Zombro**

**Day Shift  
Monday, August 07, 2017  
0700 - 1900**

**Night Shift  
Monday, August 07 – Tuesday, August 08, 2017  
1800 - 0700**

Link to MAP on line:

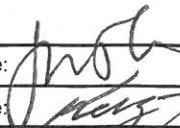


Link to IAP on line:






## INCIDENT OBJECTIVES (ICS 202)

<b>1. Incident Name:</b>		<b>2. Operational Period: DAY / NIGHT</b>	
PARK CREEK / ARRASTRA CREEK / ALICE CREEK		Date/Time From: 08/07/2017 0700      MON	Date/Time To: 08/08/2017 0700      TUE
<b>3. Objective(s):</b>			
<p><b>LEADERS INTENT:</b> The highest priority is to protect the safety of fire personnel and human life followed by the protection of private property and structures. Strategies and tactical decisions will safely, effectively and efficiently address known and anticipated hazards while providing for the highest probability of success.</p> <p><b>MANAGEMENT OBJECTIVES:</b></p> <ul style="list-style-type: none"> <li>• Utilize resources to maximize efficiency and minimize cost expenditures.</li> <li>• Minimize damage to cultural values, threatened and endangered species, archeological sites, and critical habitat within the fire perimeter by providing equipment weed wash and decontamination of Aircraft water buckets.</li> <li>• Provide accurate and timely fire information through interagency and public coordination.</li> <li>• Maintain an initial response capability within the following area: Beaver Creek Rd. to Copper Creek Rd., North to the Scapegoat Wilderness Boundary and West to the Helena Forest Service Boundary.</li> </ul>			
<b>4. Operational Period Command Emphasis:</b>			
<p><b>CONTROL OBJECTIVES:</b> In order to minimize damage to infrastructure and critical assets, keep the Fires within:</p> <p>Park Creek / Arrastra Creek</p> <ul style="list-style-type: none"> <li>• North of Helena Lewis and Clark Forest Boundary</li> <li>• East of Helena Lewis and Clark Forest Boundary</li> <li>• South of the Snow / Talon fire scar</li> <li>• West of Copper Creek Rd</li> </ul> <p>Alice Creek</p> <ul style="list-style-type: none"> <li>• North of Helena Lewis and Clark Forest Boundary</li> <li>• East of Scapegoat Wilderness</li> <li>• South of the Continental Divide</li> <li>• West of Alice Creek Drainage</li> </ul>			
<b>General Situational Awareness:</b>			
Review weather forecast thoroughly as significant weather changes are predicted over the next few operational periods.			
<b>5. Site Safety Plan Required?</b> Yes <input type="checkbox"/> No <input checked="" type="checkbox"/>			
Approved Site Safety Plan(s) Located at:			
<b>6. Incident Action Plan</b> (the items checked below are included in this Incident Action Plan):			
<input checked="" type="checkbox"/> ICS 202	<input type="checkbox"/> ICS 207	Other Attachments:	
<input checked="" type="checkbox"/> ICS 203	<input type="checkbox"/> ICS 208	<input checked="" type="checkbox"/> FIRE BEHAVIOR FORECAST	
<input checked="" type="checkbox"/> ICS 204	<input checked="" type="checkbox"/> ICS 220	<input checked="" type="checkbox"/> TRAINING MESSAGE	
<input checked="" type="checkbox"/> ICS 205	<input type="checkbox"/> Map/Chart	<input checked="" type="checkbox"/> BEAR SAFETY MESSAGE	
<input type="checkbox"/> ICS 205A	<input checked="" type="checkbox"/> Weather Forecast/Tides/Currents	<input checked="" type="checkbox"/> UNIT LOG	
<input checked="" type="checkbox"/> ICS 206			
<b>7. Prepared by:</b> JOSH CLARK	<b>Position/Title:</b> RESL(T)	<b>Signature:</b> 	
<b>8. Approved by Incident Commander:</b>		<b>Signature:</b> 	
Name: <i>Kelly Zumbro</i>			
ICS 202	IAP Page	Date/Time: 08/06/2017 2100	

## ORGANIZATION ASSIGNMENT LIST (ICS 203)

<b>1. Incident Name:</b>		<b>2. Operational Period: DAY / NIGHT</b>	
PARK CREEK / ARRASTRA CREEK /		Date/Time From: 08/07/2017 0700 MON	Date/Time To: 08/08/2017 0700 TUE
<b>3. Incident Commander(s) and Command Staff:</b>		<b>6. Logistics Section:</b>	
IC/UC	KELLY ZOMBRO	CHIEF	ERIC B SWEETMAN MARTIE J HALE (T)
DEPUTY	NICKIE WASHINGTON MATT CONKLIN (T)	BASE CAMP MANAGER	KYLER MC CARREL (8/15) MIKE ROACHE (8/14) (T)
SAFETY OFFICER	JAMES ARAGON PAUL TOMPKINS	SUPPLY UNIT	TRAVIS W SHIDAL
INFORMATION OFFICER	CHON BRIBIESCAS SENECA SMITH (T)	FACILITIES UNIT	ARTHUR CURLEY JEFF D FOX
LIAISON OFFICER	LARRY LAVOGUE JANINE SUMMY (T)	GROUND SUPPORT UNIT	CHRISTOPHER HALEY RON NOORDMAN
HUMAN RESOURCES	ALAN SEAGO	COMMUNICATIONS UNIT	CHRISTOPHER A PERRY
<b>4. Agency/Organization Representative(s):</b>		MEDICAL UNIT	GENA CHRISTINE FOWLKES
<b>Agency/Organization</b>	<b>Name</b>	FOOD UNIT	RICHARD WAITE BILL CREWS (T)
USFS AA	BILL AVEY	COMMUNICATIONS TECH	MIKE GREENE VINNY PUGLIESE (T)
USFS AREP	CAROL HATFIELD	ORDERING MANAGER	RYAN MORRIS (T)
DNRC AREP	KRISTEN BAKER DICKINSON	<b>7. Operations Section:</b>	
LINCOLN RURAL FD	ZACK MUSE	OPS SECTION CHIEF	COREY ROSE JIM SNOW (T)
REAF	JOSH LATTIN KATE CONDON (T)	PLANNING OPS	DON SMITH
SHERIFF	LEO DUTTON	DIVISION/GROUP	A (PARK CREEK)   BRIAN GILMORE GARY WRIGHT (T)
<b>5. Planning Section:</b>		DIVISION/GROUP	Z (PARK CREEK)   ROB NOXON JOSH SCHMALENBEGGER (T)
CHIEF	STEVE ANDERSON	DIVISION/GROUP	D (ARRASTRA CREEK)   TEMO BALTAZAR NICHOLAS GUY SCHREINER (8/7) (T)
DEPUTY	KEN BATES	DIVISION/GROUP	G (ARRASTRA CREEK)   JOHN OWINGS RICH MARTIN (T) <i>John Olsen</i>
RESOURCES UNIT	KEVIN FETTERMAN, ROBERT ASHBY JOSH CLARK (T)	DIVISION/GROUP	S (ALICE CREEK)   JESSE MONTIJO
SITUATION UNIT	GORDON TAMPLIN, KEN VAN WIG KYLE HAUDUCOEUR (T)	DIVISION/GROUP	INITIAL ATTACK   ALBERT WARD
DOCUMENTATION UNIT	ALAN SEAGO	DIVISION/GROUP	NIGHT SHIFT   TODD WOOD (8/16)
DEMOBILIZATION UNIT	GREG WHITE (T)	DIVISION/GROUP	CONTINGENCY   CRAIG ROACH (8/15), T HAL STEVENS (8/17)
FIRE BEHAVIOR ANALYST	TBD	<b>7b. Air Operations Branch:</b>	
TRAINING SPECIALIST	GREG WHITE	AIR OPS BRANCH DIRECTOR	JOANN OVERACKER
GIS SPECIALIST	DAWN HUTCHINSON RICHARD MURILLO	<b>8. Finance/Administration Section:</b>	
INCIDENT METEOROLOGIST	PHIL MANUEL (8/20)	CHIEF	KAREN BAUMAN ANNMARIE CARLSON (T)
TECHNOLOGY SUPPORT SPECIALIST	BRETT DAVIDSON ERNEST ORTIZ	DEPUTY	DEBBIE L YORK
<b>9. Prepared By:</b>		<b>Position/Title:</b>	<b>Signature:</b>
ICS 203	Name: JOSH CLARK	RESL (T)	
IAP Page	Date/Time: 08/06/2017 1405		





## Incident Weather Forecast



**FORECAST NO:** 18

**NAME OF FIRE:** Park/Arrastra/Alice Cr.

**PREDICTION FOR:** Day **SHIFT**, Mon. 8/07/17  
Night **SHIFT**, Mon. PM 8/07/17 to Tue. AM 8/08/17

**UNIT:** Helena Lewis and Clark NF

**SIGNED:** *Phil Manuel*

**TIME AND DATE**

**FORECAST ISSUED:** 1900 Aug 06 2017

Phil Manuel  
**Incident Meteorologist**

**WEATHER DISCUSSION:**

Weak high pressure over the northern Rockies will continue to provide fair weather with near normal temperatures through early Tuesday, winds mainly light and terrain driven. A cold front will move into the area for mid-week providing an opportunity for showers/thunderstorms from Tuesday night through Thursday.

For Reference: Normal temperature range for Lincoln, MT in August is a High of 82 and Low of 44.

**WEATHER FORECAST FOR MONDAY (DAY-SHIFT):**

**WEATHER:** Mostly Sunny. **Inversion breaking between 1030 to 1130.**

**TEMPERATURES:** Maximum 81-86 below 5500 ft., 72-80 5500-7000 ft., 66-71 above 7000 ft. (Up 5)

**HUMIDITY:** Minimum 17-22% below 5500 ft., 23-27% 5500-7000 ft., 27-32% above 7000 ft. (Down 7)

**20 FT WINDS:**

**RIDGETOP** – ESE 4-8 mph with gusts to 16 mph.

**SLOPE/VALLEY** – ESE 4-7 mph with gusts to 14 mph.

**HAINES INDEX:** 4 Low      **LAL:** 1

**WEATHER FORECAST FOR MONDAY NIGHT (NIGHT-SHIFT):**

**WEATHER:** Mostly clear. Thermal belt setting up between 5500' to 6500'.

**TEMPERATURES:** Minimum 45-50 below 5500 ft., 50-54 mid-slopes and ridges.

**HUMIDITY:** Maximum 75-90% in drainage bottoms, 45-60% on mid-slopes/ridges.

**20 FT WINDS:**

**RIDGETOP** – ENE 4-8 mph with gusts to 16 mph.

**SLOPE/VALLEY** – NE 3-7 mph with gusts to 10 mph, becoming drainage winds after midnight.

**LAL:** 1.

**OUTLOOK FOR TUESDAY:**

Cold front approaches from the North. Mostly Sunny, breezy afternoon. Isolated thunderstorm threat Tuesday Night.

**Inversion breaking between 1030 to 1130.** Highs 81-86 below 5500 ft., 70-80 above 5500 ft. Min RH 17-27%.

**Winds:** Slope/Valley – Upslope/Up-valley winds 4-8 mph and gusty, becoming NE 7-14 mph with gusts to 20 mph in the afternoon. Ridgetop – NE 10-15 mph with gusts 15 mph.

**Haines Index:** 4 Low      **LAL:** 1 during the day      **LAL:** 2 Tuesday night

**EXTENDED FORECAST (WEDNESDAY & THURSDAY):**

Front will stall vicinity of the Continental Divide providing an opportunity for showers and thunderstorms. This will result in the **potential for Gusty and Variable Thunderstorm Outflow Winds** both Wednesday and Thursday. Temperatures will trend cooler with higher humidity. For this forecast period: MaxTemps 65-75; Min RH's 25-35%.

Sunrise 6:17 AM MDT

(email weather observations to [phillip.manuel@noaa.gov](mailto:phillip.manuel@noaa.gov))

Sunset 8:56 PM MDT

# Arrastra Cr & Park Cr Incident General Weather Outlook

For Planning Purposes Only, see the Official Forecast

Forecast made 06 Aug/1900 - Incident Meteorologist (IMET) Phil Manuel

Day	Mon	Tue	Wed	Thu	Fri	Sat
	7-Aug	8-Aug	9-Aug	10-Aug	11-Aug	12-Aug
Clouds @ 1500 (%)	10	25	40	50	30	20
Avg. Max Temp (F)	80	79	71	74	79	82
Min Humidity (%)	18	20	30	25	20	15
Ridge Wind (mph)	8	15	14	12	12	10
Wind Direction*	ESE	NIE	NINE	E	ESE	SW
LAL	1	1	2	3	1	1
Precip Chance (%)	0	5	30	30	10	5
Haines Index	4	4	4	5	4	5

KEY:	Moderate Burning Conditions	Take Caution - Critical Burning Conditions		Extreme Burning Conditions
	Clouds	>25%	15	to 25
Avg Max Temp	<77F	77	to 80	>80F
Min Humidity	>20%	15	to 20	<15%
Ridge Wind	<15mph	15	to 20	>20mph
*Wind Direction	NNW Through NNE Wind Direction Would be Criticality When It Occurs			
LAL	< 4	4		> 4
Precip Chance	>30%	20	to 30	<20%
Haines Index	< 4	5		6

Five or more EXTREME blocks in a day equals the potential for a Critical Weather Day

This forecast matrix was developed for the Arrastra Cr & Park Cr Wildfire and uses criteria specific for this incident. Every incident will respond to conditions differently and adjustments to the formulas and or categories used may be needed.



## FIRE BEHAVIOR FORECAST

<b>FORECAST NUMBER:</b> #20	<b>TYPE OF FIRE:</b> Wildland Fire
<b>FIRE NAME:</b> Park Creek/Arrastra Creek/Alice Creek	<b>OPERATIONAL PERIOD:</b> Day/Night: 08/07/17-08/08/2017
<b>DATE ISSUED:</b> 08/05/17	<b>TIME ISSUED:</b> 1900 hrs
<b>UNIT:</b> Lincoln RD/Helena-Lewis and Clark NF/MT	<b>SIGNED:</b> <i>Risa Lange-Navarro</i> , FBAN; Andy Pascarella, FBAN(t)

### INPUTS

**WEATHER SUMMARY:** See Attached Spot Weather Forecast for further information.  
Lincoln/Augusta/Choteau FDRA #1 ERC **Observed** for 08/05/17 **55-VERY HIGH – 74<sup>th</sup> Percentile**

FIRE BEHAVIOR	OUTPUTS
---------------	---------

**GENERAL:**

- Fuel type is mostly mixed conifer with heavy standing dead bug-kill, and heavy dead/down. Heavy fuels ignite and burn out, cured grass and shrub fuels burn, and green grassy fuels cure and burn. In places, green drainages are now burning and may not serve as a barrier. --Fuel models 2, 8, 9 & 10. --Measured 1000 hr fuel moistures 8-14%.
- Topography consists of steep, rocky, deep drainages.
- Fire behavior has been active surface fire (creeping, smoldering, backing, flanking, and torching) in heavy dead and down fuels, standing bug-killed snags/red-needled bug-killed trees with single/group torching trees & short duration crown runs, especially on S/SW slopes. Fire backing downslope is causing rollouts and slope reversals. Head fire should be expected upon slope reversal. Younger regen units are becoming available to burn. Reburn potential is high throughout the fire areas. Spotting distance up to ½ mile, expect further distance if sustained strong winds.
- Estimated Rates of Spread (ROS): Head ROS in Fuel model 2: 21 ch/hr, Fuel model 8: 2 ch/hr, Fuel model 9: 9 ch/hr & Fuel Model 10: 9 ch/hr. Backing ROS <1.5 ch/hr, FLs <1.5 ft. Expect higher rates-of-spread with gusty winds.
- Flame Lengths (FL) Fuel model 2: 5 ft, Fuel model 8: <1.5 ft, Fuel model 9: 3 ft, Fuel model 10: 6 ft.
- Snow-Talon fire scar area ROS <1 ch/hr, FLs <4 ft in scattered jackpots of 100hr /1000hr fuels.
- Burn period has been from 0800-1900 hrs with peak from about 1330-1800 hrs.
- Probability of Ignition on unshaded south aspects with fine dead fuel moisture of 4% +/- 76%, 5% +/- 66%

**SPECIFIC:** Ensure posted lookouts are in a good safe spot where they can observe the fire activity & weather. Take hourly weather observations, email them ([phillip.manuel@noaa.gov](mailto:phillip.manuel@noaa.gov)) or bring them to ICP at end of shift.

**Arrastra Cr Div G:** Recent active parts of the fire will continue to smolder and creep with occasional torching as fuels burn out. Roll out is still possible and could continue to roll across the Arrastra trail, the 4106 D1 Rd and the Beaver Creek Rd. The fire over the clipper line on Tuesday still has potential to rollout and spot between the 4106 D1 and the Beaver Creek Rd., and is active near the hand line put in on the southeastern flank.

**Arrastra Cr Div D:** Fire continues to move into the Stonewall Creek drainage from the ridge just west, backing and flanking. The area burning in the SW corner of the Section 28, near the 607 C Rd also continues to actively back, flank, and spot/rollout below itself. East of Thursday's burnout operation, there is plenty of unburned fuel still between your line and the fire.

**Park Cr Div A:** Recent active parts of the fire will continue to smolder and creep as fuels burn out. On the west end of the division, fire continues to back/flank with moderate intensity into the unnamed drainage east of Stonewall. Watch for any additional rollout and spots south of the fire perimeter on state land.

**Park Cr Div Z:** Recent active parts of the fire will continue to smolder and creep as fuels burn out, especially in Liverpool Creek. Continue to monitor the area for any spot fires from the recent fire activity and burnout operations.

**Alice Cr DIV S:** Northeast side of the fire is the active side, holding heat, burning in duff and heavy fuels.

**IA:** Fires have the potential to go big fast with heavy, dead/downed fuels, ladder fuels, dead standing fuels and now live fuels becoming available, especially with predicted low RHs, gusty winds, and high ERC. Size up the fire behavior before engaging.

**Night Shift:** Thermal belt setting up between 5500' to 6500'. Fire from recent burnout operations can be expected to continue to burn out heavy fuels and green interior patches. Fire weakened trees may fall with downslope winds. Watch for rollout anywhere lines are underslung. Spots may still be out there from recent burnout operations. Overall fire activity decreasing around 2200 hrs.

**AIR OPERATIONS:** Smoky conditions with inversion usually lifting after 0900 hrs. Wind shifted to the NNE and gusty.

**Watchout Situation # 4: Unfamiliar with weather and local factors influencing fire behavior ...**

**Watch for alignment of slope, winds and fuels for most active fire behavior.**

**Develop trigger points for your disengagement if fire behavior threatens your safety.**

**PLEASE GIVE FEEDBACK, it's greatly appreciated!**





## Division/Group Assignment List (ICS 204 WF)

<b>1. Incident Name:</b>			<b>3.</b>			
PARK CREEK / ARRASTRA CREEK / ALICE CREEK			<b>Branch:</b>		<b>Division/Group:</b>	
<b>2. Operational Period:</b> DAY 0700-1900					<b>A (PARK CREEK)</b>	
Date/Time From: 08/07/2017 0700 MON	Date/Time To: 08/07/2017 1900 MON					
<b>4. Operations Personnel</b>						
<b>OPERATIONS CHIEF</b>		COREY ROSE JAMES SNOW (T)		<b>BRANCH DIRECTOR</b>		
<b>DIVISION/GROUP SUPERVISOR</b>		BRIAN GILMORE GARY WRIGHT		<b>AIR ATTACK SUPERVISOR</b>		
<b>5. Resources Assigned this Period</b>						
Strike Team / Task Force / Resource Designator	LWD	Leader		Number Persons	Drop Off PT./Time	Pick Up PT./Time
C-5 HC2I CREW- T2IA - GRAYBACK 12B *(AVAIL I/A)	08/10	ADAM BABBITT		20	DP10/0800	DP10/1800
C-13 HC2 CREW - T2 - FORT BELKNAP	08/12	VINCENT BRADLEY		20	DP10/0800	DP10/1800
E-20 WTS2 WATER TENDER WATSON	08/15	B WATSON		1	DP10/0800	DP10/1800
E-30 ENG6 ENGINE - T6 - NMN4S - LAS VEGAS	08/07	EUGENE PINO		3	DP10/0800	DP10/1800
E-35 ENG6 ENGINE - T6 - CHAFFEE COUNTY	08/14	KEVIN MCCONNAUGHAY		3	DP10/0800	DP10/1800
E-71 ENG6 ENGINE - T6 - MISSOULA CITY FIRE	08/17	GARMAN KORY		2	DP10/0800	DP10/1800
E-97 SKG3 SKIDGINE - T3 - TIMBER TRAIL <i>* I/A AVAIL</i>	08/13	ROB BROWN		1	DP10/0800	DP10/1800
O-9 TFLD	08/06	MICHAEL MARTIN		1	DP10/0800	DP10/1800
O-15 SOFR <i>** (AVAIL TO A/Z)</i>	08/09	JEFFREY KERR		1	DP10/0800	DP10/1800
O-28 EMPF	08/07	REBECCA MICHELLE WALLACE		1	DP10/0800	DP10/1800
E-32 AMBU LINCOLN AMBULANCE	08/13	JEREMY GILLIAM		2	DP10/0800	DP10/1800
<b>6. Control Operations/Work Assignments:</b>						
<p style="text-align: center;"><i>6-23 TFLD BROWN 1 DP10/0800 DP10/1800</i></p> <p>Continue to prep structures within the DIV and monitor.</p> <p>Maintain hose lays and support water handling equipment (I.E. sprinkler systems).</p> <p>Improve shaded fuel breaks as necessary to prevent fire spread south of forest boundary.</p> <p>Utilize mechanized equipment to remove snag threats thereby reducing the threat to ground personnel.</p>						
<b>7. Special Instructions:</b>						
Use caution around snags and flag as needed for safety. Identify snags to be fallen with appropriate tape. Use caution while driving on Highway 200. Use caution while driving on 330 road system. Be aware of wildlife in the fire area and use caution when encountered. Utilize command frequency to communicate with shift resources. Backhaul excess equipment and trash. Utilize bear boxes where appropriate.						
<b>8. Division/Group Communication Summary</b>						
Function	Channel	RX Frequency N/W	RX Tone/NAC	TX Frequency N/W	TX Tone/NAC	Mode
SEE REVERSE						
<b>9. Prepared By (Resource Unit Leader)</b>			<b>Approved By (Planning Section Chief)</b>		<b>Date</b>	<b>Time</b>
JOSH CLARK (T) <i>J Clark</i>			KEN BATES <i>KB</i>		08/06/2017	2000



INCIDENT RADIO COMMUNICATIONS PLAN		Incident Name			Date/Time Prepared			Operational Period Date/Time		
		<b>PARK,ARRASTRA,ALICE FIRE</b>			<b>08/06/17 1900</b>			<b>08/07-08/17 0700-0700</b>		
Zh / Ch	Function	Channel Name/Trunked Talkgroup	Assignment	RX Freq	RX Tone/NAC	TX Freq	TX Tone/NAC	Mode A, D, M	Remarks	
1	Command	NIFC C6	All Divisions	168.4750	127.3	173.8125	127.3	A	DALTON MTN	
2	Command	NIFC C37	All Divisions	166.3125	127.3	171.7250	127.3	A	BLACK MTN	
3	Command	NIFC C39	All Divisions	164.1625	127.3	172.1125	127.3	A	CRATER MTN	
4	Command	NIFC C48	All Divisions	166.9125	127.3	173.7750	127.3	A	ALICE CREEK FIRE	
5	Command	Stonewall	IA/Alice	171.1375		164.1500	114.8	A	Helena Local Forest Net (Tone 11)	
6	Tactical	NIFC T1	DIV A	168.0500	127.3	168.0500	127.3	A		
7	Tactical	NIFC T2	DIV D	168.2000	127.3	168.2000	127.3	A		
8	Tactical	NIFC T3	DIV G/Night	168.6000	127.3	168.6000	127.3	A		
9	Tactical	NIFC T5	DIV S	166.7250	127.3	166.7250	127.3	A		
10	Tactical	NIFC T6	DIV Z	166.7750	127.3	166.7750	127.3	A		
11	Air to Ground	ARAST A/G	Arresta Creek	169.9875		169.9875		A	Arresta Fire Air to Ground	
12	Air to Ground	Park A/G	Park Creek	166.9625		166.9625		A	Park Creek Air to Ground	
13	Tactical	NIFC T7	IA TAC	168.2500	127.3	168.2500	127.3	A	IA TACTICAL	
14	Air to Ground	A/G 66	IA Air to Ground	166.6750		166.6750		A	IA Air to Ground	
15	Air Medical	TAN	Medical	155.3400		155.3400		A	AIR Medical	
16	Emergency only	GUARD	All Divisions	168.6250		168.6250	110.9	A	AIR GUARD - emerg. use only	
17		Blank								
18		Blank								
19	Air Medical	TAN	Medical	155.3400		155.3400		A	AIR Medical	
20	Emergency only	GUARD	All Divisions	168.6250		168.6250	110.9	A	AIR GUARD - emerg. use only	

Prepared By (Communications Unit Leader)  Incident Location County Latitude, Longitude

**Chris Perry COM1**

Deviation is assumed to be narrow band unless otherwise noted in the remarks. Mode refers to either "A" (analog), "D" (digital) or "M" (mixed mode). 1/14/14 v.5



## Division/Group Assignment List (ICS 204 WF)

<b>1. Incident Name:</b>		<b>3.</b>				
PARK CREEK / ARRASTRA CREEK / ALICE CREEK		<b>Branch:</b>	<b>Division/Group:</b>  <b>Z (PARK CREEK)</b>			
<b>2. Operational Period:</b> <b>DAY 0700-1900</b>						
Date/Time From: 08/07/2017 0700      MON	Date/Time To: 08/07/2017 1900      MON					
<b>4. Operations Personnel</b>						
<b>OPERATIONS CHIEF</b>	COREY ROSE JAMES SNOW (T)	<b>BRANCH DIRECTOR</b>				
<b>DIVISION/GROUP SUPERVISOR</b>	ROBB NOXON JOSH SCHMALENBEGER (T)	<b>AIR ATTACK SUPERVISOR</b>				
<b>5. Resources Assigned this Period</b>						
Strike Team / Task Force / Resource Designator	LWD	Leader	Number Persons	Drop Off PT./Time	Pick Up PT./Time	
C-12 HC2 CREW MQ FRANCO REFORESTATION	08/09	NOE FRANCO	20	DP 2/0800	DP 2/1800	
E-26 ENG6 ENGINE FLAME CHASER ASSOC	08/11	KARL PESO	3	DP 2/0800	DP 2/1800	
E-105 ENG6 BRUSH 58 (*AVAIL FOR I/A)	08/06	TODD WEILER	3	DP 2/0800	DP 2/1800	
E-54 WTS2 WATER TENDER HOBACK	08/16	CHUCK ORR	1	DP 2/0800	DP 2/1800	
O-109 TFLD	08/12	DUSTIN KROHN	1	DP 2/0800	DP 2/1800	
O-15 SOFR	08/09	JEFFREY N KERR	1	DP 2/0800	DP 2/1800	
O-117 EMTF	08/14	CHRISTOPHER LACY	1	DP 2/0800	DP 2/1800	
<b>6. Control Operations/Work Assignments:</b> <i>E-92      SKIDENGINE</i>						
Continue to prep structures within the DIV and monitor.						
Maintain water handling equipment (I.E. sprinkler systems) adjacent to structure concerns.						
Mop-up as appropriate and as safety considerations are met.						
Limit exposure of personnel to snag threats.						
<b>7. Special Instructions:</b>						
Use caution around snags and flag as needed for safety. Identify snags to be fallen with appropriate tape. Use caution while driving on Highway 200. Use caution while driving on 330 road system. Be aware of wildlife in the fire area and use caution when encountered. Utilize command frequency to communicate with shift resources. Backhaul excess equipment and trash. Utilize bear boxes where appropriate.						
<b>8. Division/Group Communication Summary</b>						
Function	Channel	RX Frequency N/W	RX Tone/NAC	TX Frequency N/W	TX Tone/NAC	Mode
SEE REVERSE						
<b>9. Prepared By (Resource Unit Leader)</b>		<b>Approved By (Planning Section Chief)</b>		<b>Date</b>	<b>Time</b>	
JOSH CLARK (T)		KEN BATES		08/06/2017	2000	



INCIDENT RADIO COMMUNICATIONS PLAN		Incident Name		Date/Time Prepared		Operational Period Date/Time			
PARK,ARRASTRA,ALICE FIRE		08/06/17 1900		08/07-08/17 0700-0700					
Zn / Ch	Function	Channel Name/Trunked Talkgroup	Assignment	RX Freq	RX Tone/NAC	TX Freq	TX Tone/NAC	Mode A, D, M	Remarks
1	Command	NIFC C6	All Divisions	168.4750	127.3	173.8125	127.3	A	DALTON MTN
2	Command	NIFC C37	All Divisions	166.3125	127.3	171.7250	127.3	A	BLACK MTN
3	Command	NIFC C39	All Divisions	164.1625	127.3	172.1125	127.3	A	CRATER MTN
4	Command	NIFC C48	All Divisions	166.9125	127.3	173.7750	127.3	A	ALICE CREEK FIRE
5	Command	Stonewall	IA/Alice	171.1375		164.1500	114.8	A	Helena Local Forest Net (Tone 11)
6	Tactical	NIFC T1	DIV A	168.0500	127.3	168.0500	127.3	A	
7	Tactical	NIFC T2	DIV D	168.2000	127.3	168.2000	127.3	A	
8	Tactical	NIFC T3	DIV G/Night	168.6000	127.3	168.6000	127.3	A	
9	Tactical	NIFC T5	DIV S	166.7250	127.3	166.7250	127.3	A	
10	Tactical	NIFC T6	DIV Z	166.7750	127.3	166.7750	127.3	A	
11	Air to Ground	ARAST A/G	Arrastra Creek	169.9875		169.9875		A	Arrastra Fire Air to Ground
12	Air to Ground	Park A/G	Park Creek	166.9625		166.9625		A	Park Creek Air to Ground
13	Tactical	NIFC T7	IA TAC	168.2500	127.3	168.2500	127.3	A	IA TACTICAL
14	Air to Ground	A/G 66	IA Air to Ground	166.6750		166.6750		A	IA Air to Ground
15	Air Medical	TAN	Medical	155.3400		155.3400		A	AIR Medical
16	Emergency only	GUARD	All Divisions	168.6250		168.6250	110.9	A	AIR GUARD - emerg. use only
17		Blank							
18		Blank							
19	Air Medical	TAN	Medical	155.3400		155.3400		A	AIR Medical
20	Emergency only	GUARD	All Divisions	168.6250		168.6250	110.9	A	AIR GUARD - emerg. use only

Prepared By (Communications Unit Leader)

**Chris Perry COML**

Incident Location

County

Latitude, Longitude

Deviation is assumed to be narrow band unless otherwise noted in the remarks. Mode refers to either "A" (analog), "D" (digital) or "M" (mixed mode). 1/14/14 v.5



## Division/Group Assignment List (ICS 204 WF)

<b>1. Incident Name:</b>		<b>3.</b>				
PARK CREEK / ARRASTRA CREEK / ALICE CREEK		<b>Branch:</b>	<b>Division/Group:</b>			
<b>2. Operational Period:</b> DAY 0700-1900		<b>D (ARRASTRA CREEK)</b>				
Date/Time From: 08/07/2017 0700 MON	Date/Time To: 08/07/2017 1900 MON					
<b>4. Operations Personnel</b>						
<b>OPERATIONS CHIEF</b>	COREY ROSE JAMES SNOW (T)	<b>BRANCH DIRECTOR</b>				
<b>DIVISION/GROUP SUPERVISOR</b>	TEMOC BALTAZAR NICHOLAS SCHREINER (T)	<b>AIR ATTACK SUPERVISOR</b>				
<b>5. Resources Assigned this Period</b>						
Strike Team / Task Force / Resource Designator	LWD	Leader	Number Persons	Drop Off PT./Time	Pick Up PT./Time	
C-11 HC21 CREW - T2IA - OWF WENATCHEE RIVER	08/09	MATT KENNEDY	20	DP 2/0800	DP 2/1800	
C-18 HC2 CREW - NORTH PACIFIC FORESTRY INC	08/16	JUAN RIVERA	20	DP 2/0800	DP 2/1800	
E-17 ENG6 ENGINE TROY FIRE SERVICE	<del>08/09</del> 8-9	MARK BENNETT	3	DP 2/0800	DP 2/1800	
E-31 ENG6 ENGINE ROCKY MOUNTIAN FIRE	08/12	PAT MARNIN	3	DP 2/0800	DP 2/1800	
E-69 ENG6 ENGINE SAGLE FD	08/09	HANSON	2	DP 2/0800	DP 2/1800	
E-76 ENG6 ENGINE DS FIRE	08/17	BILLIE SMOCK	3	DP 2/0800	DP 2/1800	
E-121 ENG6 ENGINE RICHARD L DEROCH	08/16	MICHAEL LITTLE DOG	3	DP 2/0800	DP 2/1800	
E-31 DOZ2 DOZER THOMPSON FENCING & EXCAVATION	08/20	FRANK THOMPSON	2	DP 2/0800	DP 2/1800	
O-18 HEQB (T) <b>TFLD</b>	08/08	LINDA GIBSON	1	DP 2/0800	DP 2/1800	
O-8 TFLD	08/07	MICHAEL BLAKE	1	DP 2/0800	DP 2/1800	
O-127 <del>HEQB</del> <b>TFLD</b>	08/13	KEVIN TVEIDT	1	DP 2/0800	DP 2/1800	
O-135 SOF2 *(AVAIL TO B/C) <b>D/G</b>	08/15	TIMOTHY OLIVERIUS	1	DP 2/0800	DP 2/1800	
O-85 EMTF	08/10	RAYMON B MINES	1	DP 2/0800	DP 2/1800	
O-FM <del>FELM</del> PLAINS *Incident Formed C-152, 153, 154, 156, 157			<b>5</b>	DP 2/0800	DP 2/1800	
<b>6. Control Operations/Work Assignments:</b>						
Continue to prep structures within the DIV and monitor.						
<b>E-52 water tender</b>						
<b>E-65 EXC/dump truck</b>						
Maintain hose lays and support water handling equipment (I.E. sprinkler systems).						
Mop-up as appropriate and as safety considerations are met.						
<b>7. Special Instructions:</b>						
Use caution around snags and flag as needed for safety. Identify snags to be fallen with appropriate tape. Use caution while driving on Highway 200. Use caution while driving on 330 road system. Be aware of wildlife in the fire area and use caution when encountered. Utilize command frequency to communicate with shift resources. Backhaul excess equipment and trash. Utilize bear boxes where appropriate.						
<b>8. Division/Group Communication Summary</b>						
Function	Channel	RX Frequency N/W	RX Tone/NAC	TX Frequency N/W	TX Tone/NAC	Mode
SEE REVERSE						
<b>9. Prepared By (Resource Unit Leader)</b>			<b>Approved By (Planning Section Chief)</b>		<b>Date</b>	<b>Time</b>
JOSH CLARK (T)			KEN BATES		08/06/2017	2000



**INCIDENT RADIO COMMUNICATIONS PLAN**

Incident Name  
**PARK,ARRASTRA,ALICE FIRE**

Date/Time Prepared  
**08/06/17 1900**

Operational Period Date/Time  
**08/07-08/17 0700-0700**

Zn / Ch	Function	Channel Name/Trunked Talkgroup	Assignment	RX Freq	RX Tone/NAC	TX Freq	TX Tone/NAC	Mode A, D, M	Remarks
1	Command	NIFC C6	All Divisions	168.4750	127.3	173.8125	127.3	A	DALTON MTN
2	Command	NIFC C37	All Divisions	166.3125	127.3	171.7250	127.3	A	BLACK MTN
3	Command	NIFC C39	All Divisions	164.1625	127.3	172.1125	127.3	A	CRATER MTN
4	Command	NIFC C48	All Divisions	166.9125	127.3	173.7750	127.3	A	ALICE CREEK FIRE
5	Command	Stonewall	IA/Alice	171.1375		164.1500	114.8	A	Helena Local Forest Net (Tone 11)
6	Tactical	NIFC T1	DIV A	168.0500	127.3	168.0500	127.3	A	
7	Tactical	NIFC T2	DIV D	168.2000	127.3	168.2000	127.3	A	
8	Tactical	NIFC T3	DIV G/Night	168.6000	127.3	168.6000	127.3	A	
9	Tactical	NIFC T5	DIV S	166.7250	127.3	166.7250	127.3	A	
10	Tactical	NIFC T6	DIV Z	166.7750	127.3	166.7750	127.3	A	
11	Air to Ground	ARAST A/G	Arrastra Creek	169.9875		169.9875		A	Arrastra Fire Air to Ground
12	Air to Ground	Park A/G	Park Creek	166.9625		166.9625		A	Park Creek Air to Ground
13	Tactical	NIFC T7	IA TAC	168.2500	127.3	168.2500	127.3	A	IA TACTICAL
14	Air to Ground	A/G 66	IA Air to Ground	166.6750		166.6750		A	IA Air to Ground
15	Air Medical	TAN	Medical	155.3400		155.3400		A	AIR Medical
16	Emergency only	GUARD	All Divisions	168.6250		168.6250	110.9	A	AIR GUARD - emerg. use only
17		Blank							
18		Blank							
19	Air Medical	TAN	Medical	155.3400		155.3400		A	AIR Medical
20	Emergency only	GUARD	All Divisions	168.6250		168.6250	110.9	A	AIR GUARD - emerg. use only

Prepared By (Communications Unit Leader)

*Chris Perry*

**Chris Perry COM1**

Incident Location

County

Latitude, Longitude

Deviation is assumed to be narrow band unless otherwise noted in the remarks. Mode refers to either "A" (analog), "D" (digital) or "M" (mixed mode). 1/14/14 v.5




## Division/Group Assignment List (ICS 204 WF)

<b>1. Incident Name:</b>		<b>3.</b>				
PARK CREEK / ARRASTRA CREEK / ALICE CREEK		<b>Branch:</b>		<b>Division/Group:</b>		
<b>2. Operational Period:</b> DAY 0700-1900				<b>G (ARRASTRA CREEK)</b>		
Date/Time From: 08/07/2017 0700 MON	Date/Time To: 08/07/2017 1900 MON					
<b>4. Operations Personnel</b>						
<b>OPERATIONS CHIEF</b>		COREY ROSE JAMES SNOW (T)		<b>BRANCH DIRECTOR</b>		
<b>DIVISION/GROUP SUPERVISOR</b>		JOHN OWINGS RICHARD MARTIN (T)		<b>AIR ATTACK SUPERVISOR</b>		
<b>5. Resources Assigned this Period</b>						
Strike Team / Task Force / Resource Designator	LWD	Leader	Number Persons	Drop Off PT./Time	Pick Up PT./Time	
<del>C-10 HC1 CREW - T1 - PALOMAR IHC</del>	<del>08/12</del>	<del>STAN HILL</del>	<del>21</del>	<del>DP21/1200</del>	<del>DP21/1800</del>	
C-6 HC2I CREW - T2IA - MFC INTERAGENCY CREW 1	08/12	BILL ALLEMAN	20	DP21/0700	DP21/1800	
C-2 HC2 CREW MQ FRANCO	08/11	JESUS CISNEROS	20	DP21/0700	DP21/1800	
C-16 HC2 CREW - T2 - R & R CONTRACTING	08/15	VICTOR ROCHA	20	DP21/0700	DP21/1800	
E-32 ENG6 ENGINE - 310 DUST CONTROL	08/07	ADAM TIEMAN	3	DP21/0700	DP21/1800	
E-112 ENG4 ENGINE - T3 FIRE SUPPRESSION	08/15	ROB VAGNAL	3	DP21/0700	DP21/1800	
E-120 ENG6 ENGINE FLAME CHASER	08/16	EDWIN HALL	3	DP21/0700	DP21/1800	
E-124 ENG6 ENGINE SOLOMON FIRE	08/16	HARVEY MORSETTE	3	DP21/0700	DP21/1800	
E-4 SKD2 SKIDDER - T2 - JOHN WARD	08/15	JOSH DOBLE	2	DP21/0700	DP21/1800	
E-6 SKD2 SKIDDER - T3 - PETERSEN	08/15	AARON HEAD	2	DP21/0700	DP21/1800	
E-37 WTS2 WATER TENDER CASTLE MOUNTAIN	08/15	BOB BASTROP	1	DP21/0700	DP21/1800	
E-116 WTS3 WATER TENDER WILDLAND WATERS	08/15	STEVEN RACEWICZ	1	DP21/0700	DP21/1800	
O-38 MODULE - WILDLAND FIRE- COLUMBINE	08/16	BRITTON QUINLAN	10	DP21/0700	DP21/1800	
O-44 TFLD	08/17	ROBERT BERNEY	1	DP21/0700	DP21/1800	
O-42 TFLD	08/16	GREGORY ROBERT SCHENK	1	DP21/0700	DP21/1800	
O-104 AEMF	08/10	JOHN RICHARDS	1	DP21/0700	DP21/1800	
O-135 SOF2 *(AVAIL FOR DIV B/C) <i>D/C</i>	08/15	TIM OLIVERIUS	1	DP21/0700	DP21/1800	
<b>6. Control Operations/Work Assignments:</b>						
Hold and improve line from the Division G/D break to a safe working area along Arrastra Creek. Mop-up as appropriate and as safety consideration are met. Utilize mechanized equipment to construct shaded fuel break to limit exposure of personnel to snag threats.						
<b>7. Special Instructions:</b>						
Use caution around snags and flag as needed for safety. Use caution while driving on Highway 200. Use caution while driving on 330 road system. Be aware of wildlife in the fire area and use caution when encountered. Utilize command frequency to communicate with shift resources. Backhaul excess equipment and trash. Utilize bear boxes where appropriate. Trim all stumps to 12" max. Trim all stumps flat, not angled.						
<b>8. Division/Group Communication Summary</b>						
Function	Channel	RX Frequency N/W	RX Tone/NAC	TX Frequency N/W	TX Tone/NAC	Mode
SEE REVERSE						
<b>9. Prepared By (Resource Unit Leader)</b>		<b>Approved By (Planning Section Chief)</b>		<b>Date</b>	<b>Time</b>	
JOSH CLARK (T) <i>[Signature]</i>		KEN BATES		08/06/2017	2000	



**INCIDENT RADIO COMMUNICATIONS PLAN** Incident Name: **PARK,ARRASTRA,ALICE FIRE** Date/Time Prepared: **08/06/17 1900** Operational Period Date/Time: **08/07-08/17 0700-0700**

Zr / Ch	Function	Channel Name/Trunked Talkgroup	Assignment	RX Freq	RX Tone/NAC	TX Freq	TX Tone/NAC	Mode A, D, M	Remarks
1	Command	NIFC C6	All Divisions	168.4750	127.3	173.8125	127.3	A	DALTON MTN
2	Command	NIFC C37	All Divisions	166.3125	127.3	171.7250	127.3	A	BLACK MTN
3	Command	NIFC C39	All Divisions	164.1625	127.3	172.1125	127.3	A	CRATER MTN
4	Command	NIFC C48	All Divisions	166.9125	127.3	173.7750	127.3	A	ALICE CREEK FIRE
5	Command	Stonewall	IA/Alice	171.1375		164.1500	114.8	A	Helena Local Forest Net (Tone 11)
6	Tactical	NIFC T1	DIV A	168.0500	127.3	168.0500	127.3	A	
7	Tactical	NIFC T2	DIV D	168.2000	127.3	168.2000	127.3	A	
8	Tactical	NIFC T3	DIV G/Night	168.6000	127.3	168.6000	127.3	A	
9	Tactical	NIFC T5	DIV S	166.7250	127.3	166.7250	127.3	A	
10	Tactical	NIFC T6	DIV Z	166.7750	127.3	166.7750	127.3	A	
11	Air to Ground	ARAST A/G	Arrastra Creek	169.9875		169.9875		A	Arrastra Fire Air to Ground
12	Air to Ground	Park A/G	Park Creek	166.9625		166.9625		A	Park Creek Air to Ground
13	Tactical	NIFC T7	IA TAC	168.2500	127.3	168.2500	127.3	A	IA TACTICAL
14	Air to Ground	A/G 66	IA Air to Ground	166.6750		166.6750		A	IA Air to Ground
15	Air Medical	TAN	Medical	155.3400		155.3400		A	AIR Medical
16	Emergency only	GUARD	All Divisions	168.6250		168.6250	110.9	A	AIR GUARD - emerg. use only
17		Blank							
18		Blank							
19	Air Medical	TAN	Medical	155.3400		155.3400		A	AIR Medical
20	Emergency only	GUARD	All Divisions	168.6250		168.6250	110.9	A	AIR GUARD - emerg. use only

Prepared By (Communications Unit Leader)  Incident Location: \_\_\_\_\_ County: \_\_\_\_\_ Latitude, Longitude: \_\_\_\_\_

**Chris Perry COMIL**

Deviation is assumed to be narrow band unless otherwise noted in the remarks. Mode refers to either "A" (analog), "D" (digital) or "M" (mixed mode). 1/14/14 v.5




## Division/Group Assignment List (ICS 204 WF)

<b>1. Incident Name:</b>		<b>3.</b>				
PARK CREEK / ARRASTRA CREEK / ALICE CREEK		<b>Branch:</b>		<b>Division/Group:</b>		
<b>2. Operational Period:</b>		<b>S (ALICE CREEK)</b>				
DAY 0700-1900						
Date/Time From: 08/07/2017 0700      MON	Date/Time To: 08/07/2017 1900      MON					
<b>4. Operations Personnel</b>						
<b>OPERATIONS CHIEF</b>		COREY ROSE JAMES SNOW (T)		<b>BRANCH DIRECTOR</b>		
<b>DIVISION/GROUP SUPERVISOR</b>		JESSE MONTIJO		<b>AIR ATTACK SUPERVISOR</b>		
<b>5. Resources Assigned this Period</b>						
Strike Team / Task Force / Resource Designator	LWD	Leader	Number Persons	Drop Off PT./Time	Pick Up PT./Time	
O-140-OD MODULE - WILDLAND FIRE - RM - BLACK HILLS	08/15	LEE DUECKER	8	DIV S SPIKE/0700	DIV S SPIKE/1800	
O-37 OD MODULE - WILDLAND FIRE - SW SAGUARO NP	08/16	JAY YANCICK	9	DIV S SPIKE/0700	DIV S SPIKE/1800	
<b>6. Control Operations/Work Assignments:</b>						
<p>Monitor fire spread to limit growth beyond ridge into the Alice Creek Drainage.</p> <p>Limit exposure of personnel to snag threats.</p> <p>Fire-use Module to spike at H3.</p>						
<b>7. Special Instructions:</b>						
<p>Use caution around snags and flag as needed for safety. Identify snags to be fallen with appropriate tape. Use caution while driving on Highway 200. Be aware of wildlife in the fire area and use caution when encountered. Utilize command frequency to communicate with shift resources. Backhaul excess equipment and trash. Utilize bear boxes where appropriate.</p>						
<b>8. Division/Group Communication Summary</b>						
Function	Channel	RX Frequency N/W	RX Tone/NAC	TX Frequency N/W	TX Tone/NAC	Mode
SEE REVERSE						
<b>9. Prepared By (Resource Unit Leader)</b>		<b>Approved By (Planning Section Chief)</b>		<b>Date</b>	<b>Time</b>	
JOSH CLARK (T)		KEN BATES		08/06/2017	2000	

**INCIDENT RADIO COMMUNICATIONS PLAN** Incident Name: **PARK,ARRASTRA,ALICE FIRE** Date/Time Prepared: **08/06/17 1900** Operational Period Date/Time: **08/07-08/17 0700-0700**

Zh / Ch	Function	Channel Name/Trunked Talkgroup	Assignment	RX Freq	RX Tone/NAC	TX Freq	TX Tone/NAC	Mode A, D, M	Remarks
1	Command	NIFC C6	All Divisions	168.4750	127.3	173.8125	127.3	A	DALTON MTN
2	Command	NIFC C37	All Divisions	166.3125	127.3	171.7250	127.3	A	BLACK MTN
3	Command	NIFC C39	All Divisions	164.1625	127.3	172.1125	127.3	A	CRATER MTN
4	Command	NIFC C48	All Divisions	166.9125	127.3	173.7750	127.3	A	ALICE CREEK FIRE
5	Command	Stonewall	IA/Alice	171.1375		164.1500	114.8	A	Helena Local Forest Net (Tone 11)
6	Tactical	NIFC T1	DIV A	168.0500	127.3	168.0500	127.3	A	
7	Tactical	NIFC T2	DIV D	168.2000	127.3	168.2000	127.3	A	
8	Tactical	NIFC T3	DIV G/Night	168.6000	127.3	168.6000	127.3	A	
9	Tactical	NIFC T5	DIV S	166.7250	127.3	166.7250	127.3	A	
10	Tactical	NIFC T6	DIV Z	166.7750	127.3	166.7750	127.3	A	
11	Air to Ground	ARAST A/G	Arrastra Creek	169.9875		169.9875		A	Arrastra Fire Air to Ground
12	Air to Ground	Park A/G	Park Creek	166.9625		166.9625		A	Park Creek Air to Ground
13	Tactical	NIFC T7	IA TAC	168.2500	127.3	168.2500	127.3	A	IA TACTICAL
14	Air to Ground	A/G 66	IA Air to Ground	166.6750		166.6750		A	IA Air to Ground
15	Air Medical	TAN	Medical	155.3400		155.3400		A	AIR Medical
16	Emergency only	GUARD	All Divisions	168.6250		168.6250	110.9	A	AIR GUARD - emerg. use only
17		Blank							
18		Blank							
19	Air Medical	TAN	Medical	155.3400		155.3400		A	AIR Medical
20	Emergency only	GUARD	All Divisions	168.6250		168.6250	110.9	A	AIR GUARD - emerg. use only

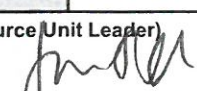
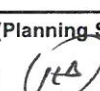
Prepared By (Communications Unit Leader)  Incident Location County Latitude, Longitude

**Chris Perry COML**

Deviation is assumed to be narrow band unless otherwise noted in the remarks. Mode refers to either "A" (analog), "D" (digital) or "M" (mixed mode). 1/14/14 v.5




## Division/Group Assignment List (ICS 204 WF)

<b>1. Incident Name:</b>			<b>3.</b>			
PARK CREEK / ARRASTRA CREEK / ALICE CREEK			<b>Branch:</b>		<b>Division/Group:</b>	
<b>2. Operational Period:</b> DAY 0700-1900						
Date/Time From: 08/07/2017 0700 MON		Date/Time To: 08/07/2017 1900 MON		<b>INITIAL ATTACK</b>		
<b>4. Operations Personnel</b>						
<b>OPERATIONS CHIEF</b>		COREY ROSE JAMES SNOW (T)		<b>BRANCH DIRECTOR</b>		
<b>DIVISION/GROUP SUPERVISOR</b>		ALBERT WARD		<b>AIR ATTACK SUPERVISOR</b>		
<b>5. Resources Assigned this Period</b>						
Strike Team / Task Force / Resource Designator		LWD	Leader	Number Persons	Drop Off PT./Time	Pick Up PT./Time
E-29 ENG6 ENGINE -LAS VEGAS STATE FORESTRY		08/14	CODY ALCON	3	ICP/0800	ICP/1800
E-122 ENG6 ENGINE - SOLOMON FIRE EQUIP		08/16	IVAN WING	3	ICP/0800	ICP/1800
E-123 ENG6 ENGINE GIST ENTERPRISES		08/16	ROBERT MITTAL	3	ICP/0800	ICP/1800
E-49 DOZ2 CONIFER LOGGING INC		08/14	CLONINGER	1	ICP/0800	ICP/1800
E-2 FEL1 FELLER BUNCHER		08/15	JOHN WARD	2	ICP/0800	ICP/1800
E-48 <del>EQD</del> Forwarder		08/08	JOE THOMAS	1	ICP/0800	ICP/1800
<del>O-127 HEQB (T) Moved to D</del>		08/13	KEVIN TVEIDT	1	ICP/0800	ICP/1800
E-63 FORW DOUG MOTE		08/08		1	ICP/0800	ICP/1800
E-95 <del>EQD</del> DOUG MOTE - Processor		08/07		1	ICP/0800	ICP/1800
<b>6. Control Operations/Work Assignments:</b>						
Assigned resources to be available for IA within the designated response area. <b>O-1009 TFLD BRIAN McEWAN</b>						
<b>7. Special Instructions:</b>						
Use caution around snags and flag as needed for safety. Identify snags to be fallen with appropriate tape. Use caution while driving on Highway 200. Use caution while driving on 330 road system. Be aware of wildlife in the fire area and use caution when encountered. Utilize command frequency to communicate with shift resources. Backhaul excess equipment and trash. Utilize bear boxes where appropriate.						
<b>8. Division/Group Communication Summary</b>						
Function	Channel	RX Frequency N/W	RX Tone/NAC	TX Frequency N/W	TX Tone/NAC	Mode
SEE REVERSE						
<b>9. Prepared By (Resource Unit Leader)</b>			<b>Approved By (Planning Section Chief)</b>		<b>Date</b>	<b>Time</b>
JOSH CLARK (T) 			KEN BATES 		08/06/2017	2000



**INCIDENT RADIO COMMUNICATIONS PLAN** Incident Name: **PARK,ARRASTRA,ALICE FIRE** Date/Time Prepared: **08/06/17 1900** Operational Period Date/Time: **08/07-08/17 0700-0700**

Zn / Ch	Function	Channel Name/Trunked Talkgroup	Assignment	RX Freq	RX Tone/NAC	TX Freq	TX Tone/NAC	Mode A, D, M	Remarks
1	Command	NIFC C6	All Divisions	168.4750	127.3	173.8125	127.3	A	DALTON MTN
2	Command	NIFC C37	All Divisions	166.3125	127.3	171.7250	127.3	A	BLACK MTN
3	Command	NIFC C39	All Divisions	164.1625	127.3	172.1125	127.3	A	CRATER MTN
4	Command	NIFC C48	All Divisions	166.9125	127.3	173.7750	127.3	A	ALICE CREEK FIRE
5	Command	Stonewall	IA/Alice	171.1375		164.1500	114.8	A	Helena Local Forest Net (Tone 11)
6	Tactical	NIFC T1	DIV A	168.0500	127.3	168.0500	127.3	A	
7	Tactical	NIFC T2	DIV D	168.2000	127.3	168.2000	127.3	A	
8	Tactical	NIFC T3	DIV G/Night	168.6000	127.3	168.6000	127.3	A	
9	Tactical	NIFC T5	DIV S	166.7250	127.3	166.7250	127.3	A	
10	Tactical	NIFC T6	DIV Z	166.7750	127.3	166.7750	127.3	A	
11	Air to Ground	ARAST A/G	Arrastra Creek	169.9875		169.9875		A	Arrastra Fire Air to Ground
12	Air to Ground	Park A/G	Park Creek	166.9625		166.9625		A	Park Creek Air to Ground
13	Tactical	NIFC T7	IA TAC	168.2500	127.3	168.2500	127.3	A	IA TACTICAL
14	Air to Ground	A/G 66	IA Air to Ground	166.6750		166.6750		A	IA Air to Ground
15	Air Medical	TAN	Medical	155.3400		155.3400		A	AIR Medical
16	Emergency only	GUARD	All Divisions	168.6250		168.6250	110.9	A	AIR GUARD - emerg. use only
17		Blank							
18		Blank							
19	Air Medical	TAN	Medical	155.3400		155.3400		A	AIR Medical
20	Emergency only	GUARD	All Divisions	168.6250		168.6250	110.9	A	AIR GUARD - emerg. use only

Prepared By (Communications Unit Leader)  Incident Location: \_\_\_\_\_ County: \_\_\_\_\_ Latitude, Longitude: \_\_\_\_\_

**Chris Perry COML**

Deviation is assumed to be narrow band unless otherwise noted in the remarks. Mode refers to either "A" (analog), "D" (digital) or "M" (mixed mode). 1/14/14 v.5



## Division/Group Assignment List (ICS 204 WF)

<b>1. Incident Name:</b>			<b>3.</b>			
PARK CREEK / ARRASTRA CREEK / ALICE CREEK			<b>Branch:</b>		<b>Division/Group:</b>	
<b>2. Operational Period:</b> <b>NIGHT 1800-0700</b>					<b>NIGHT SHIFT</b>	
Date/Time From: 08/07/2017 1800                      MON		Date/Time To: 08/08/2017 0700                      TUE				
<b>4. Operations Personnel</b>						
<b>OPERATIONS CHIEF</b>		COREY ROSE JAMES SNOW (T)		<b>BRANCH DIRECTOR</b>		
<b>DIVISION/GROUP SUPERVISOR</b>		JOHN WOOD		<b>AIR ATTACK SUPERVISOR</b>		
<b>5. Resources Assigned this Period</b>						
Strike Team / Task Force / Resource Designator		LWD	Leader	Number Persons	Drop Off PT./Time	Pick Up PT./Time
E-14 ENG6 ENGINE - T6 - ROCKY MOUNTAIN		08/07	JERALD WHITE	3	ICP/1800	ICP/2400
E-15 ENG6 ENGINE - T6 - ROCKY MOUNTAIN		08/07	COREY NUNNELLY	3	ICP/1800	ICP/2400
E-18 ENG6 ENGINE - T6 - TROY FIRE SERVICE		08/19	DAN HOKANSON	3	ICP/1800	ICP/0700 <i>ICP 2400</i>
E-28 ENG6 ENGINE - T6 - HOT SPRINGS RFD		08/11	RUBEN LOBERG	2	ICP/1800	ICP/0700
E-33 ENG6 ENGINE - T6 - BAKKEN, BRANDON		08/14	DARREN NAMINGHA	3	ICP/1800	ICP/0700
E-34 ENG6 ENGINE - T6 - NMCIF - ENGINE 671		08/14	TAVARIS EVANS	3	ICP/1800	ICP/0700
E-106 ENG6 ENGINE - T6 - WILDLANDS FIRE		08/12	JOHN BILLETER	3	ICP/1800	ICP/0700
E-109 ENG6 ENGINE - T6 - PEANUT PIE		08/14	RAY MOORE	3	ICP/1800	ICP/0700-2400
E-111 ENG6 ENGINE - T6 - PEANUT PIE		08/14	LAWRENCE SULLIVAN	3	ICP/1800	ICP/0700-2400
O-39 TFLD		08/15	BRIAN PITTS	1	ICP/1800	ICP/0700
O-115 EMTF		08/12	WILL CHARLTON	1	ICP/1800	ICP/0700
O-116 EMTF		08/13	JOY BALLEW	1	ICP/1800	ICP/0700
<b>6. Control Operations/Work Assignments:</b>						
Patrol and monitor fire to prevent spread south of the forest boundary.						
<i>O-55 SOF2                      Russell Groves                      1 ICP1800                      ICP 2400</i>						
<b>7. Special Instructions:</b>						
Use caution around snags and flag as needed for safety. Identify snags to be fallen with appropriate tape. Use caution while driving on Highway 200. Use caution while driving on 330 road system. Be aware of wildlife in the fire area and use caution when encountered. Utilize command frequency to communicate with shift resources. Backhaul excess equipment and trash. Utilize bear boxes where appropriate.						
<b>8. Division/Group Communication Summary</b>						
Function	Channel	RX Frequency N/W	RX Tone/NAC	TX Frequency N/W	TX Tone/NAC	Mode
SEE REVERSE						
<b>9. Prepared By (Resource Unit Leader)</b>		<b>Approved By (Planning Section Chief)</b>		<b>Date</b>	<b>Time</b>	
JOSH CLARK (T) <i>[Signature]</i>		KEN BATES <i>[Signature]</i>		08/06/2017	2050	



**INCIDENT RADIO COMMUNICATIONS PLAN**

Incident Name

**PARK,ARRASTRA,ALICE FIRE**

Date/Time Prepared

**08/06/17 1900**

Operational Period Date/Time

**08/07-08/17 0700-0700**

Zn / Ch	Function	Channel Name/Trunked Talkgroup	Assignment	RX Freq	RX Tone/NAAC	TX Freq	TX Tone/NAAC	Mode A, D, M	Remarks
1	Command	NIFC C6	All Divisions	168.4750	127.3	173.8125	127.3	A	DALTON MTN
2	Command	NIFC C37	All Divisions	166.3125	127.3	171.7250	127.3	A	BLACK MTN
3	Command	NIFC C39	All Divisions	164.1625	127.3	172.1125	127.3	A	CRATER MTN
4	Command	NIFC C48	All Divisions	166.9125	127.3	173.7750	127.3	A	ALICE CREEK FIRE
5	Command	Stonewall	IA/Alice	171.1375		164.1500	114.8	A	Helena Local Forest Net (Tone 11)
6	Tactical	NIFC T1	DIV A	168.0500	127.3	168.0500	127.3	A	
7	Tactical	NIFC T2	DIV D	168.2000	127.3	168.2000	127.3	A	
8	Tactical	NIFC T3	DIV G/Night	168.6000	127.3	168.6000	127.3	A	
9	Tactical	NIFC T5	DIV S	166.7250	127.3	166.7250	127.3	A	
10	Tactical	NIFC T6	DIV Z	166.7750	127.3	166.7750	127.3	A	
11	Air to Ground	ARAST A/G	Arrastra Creek	169.9875		169.9875		A	Arrastra Fire Air to Ground
12	Air to Ground	Park A/G	Park Creek	166.9625		166.9625		A	Park Creek Air to Ground
13	Tactical	NIFC T7	IA TAC	168.2500	127.3	168.2500	127.3	A	IA TACTICAL
14	Air to Ground	A/G 66	IA Air to Ground	166.6750		166.6750		A	IA Air to Ground
15	Air Medical	TAN	Medical	155.3400		155.3400		A	AIR Medical
16	Emergency only	GUARD	All Divisions	168.6250		168.6250	110.9	A	AIR GUARD - emerg. use only
17		Blank							
18		Blank							
19	Air Medical	TAN	Medical	155.3400		155.3400		A	AIR Medical
20	Emergency only	GUARD	All Divisions	168.6250		168.6250	110.9	A	AIR GUARD - emerg. use only

Prepared By (Communications Unit Leader)

**Chris Perry COML**

Incident Location

County

Latitude, Longitude

Deviation is assumed to be narrow band unless otherwise noted in the remarks. Mode refers to either "A" (analog), "D" (digital) or "M" (mixed mode).



## Division/Group Assignment List (ICS 204 WF)

<b>1. Incident Name:</b>		<b>3.</b>				
PARK CREEK / ARRASTRA CREEK / ALICE CREEK		<b>Branch:</b>		<b>Division/Group:</b>		
<b>2. Operational Period:</b> DAY 0700-1900				<b>CONTINGENCY</b>		
Date/Time From: 08/07/2017 0700 MON	Date/Time To: 08/07/2017 1900 MON					
<b>4. Operations Personnel</b>						
<b>OPERATIONS CHIEF</b>	COREY ROSE JAMES SNOW (T)	<b>CONTINGENCY OPERATIONS CHIEF</b>	TBD (T)			
<b>BRANCH DIRECTOR</b>		<b>DIVISION/GROUP SUPERVISOR</b>	CRAIG ROACH HAL STEVENS			
<b>5. Resources Assigned this Period</b>						
Strike Team / Task Force / Resource Designator	LWD	Leader	Number Persons	Drop Off PT./Time	Pick Up PT./Time	
<b>6. Control Operations/Work Assignments:</b>						
Scout and develop additional Management Action Points (M.A.P.S.) to the West of Arrastra Creek to include Coopers Lake, adjacent to the Southern end of the Scapegoat Wilderness and adjacent to the Eastern forest boundary in the area of Landers Fork Creek.						
<b>7. Special Instructions:</b>						
<b>8. Division/Group Communication Summary</b>						
Function	Channel	RX Frequency N/W	RX Tone/NAC	TX Frequency N/W	TX Tone/NAC	Mode
SEE REVERSE						
<b>9. Prepared By (Resource Unit Leader)</b>		<b>Approved By (Planning Section Chief)</b>		<b>Date</b>	<b>Time</b>	
JOSH CLARK (T)		KEN BATES		08/06/2017	2000	

**INCIDENT RADIO COMMUNICATIONS PLAN**

Incident Name

**PARK,ARRASTRA,ALICE FIRE**

Date/Time Prepared

**08/06/17 1900**

Operational Period Date/Time

**08/07-08/17 0700-0700**

Zh / Ch	Function	Channel Name/Trunked Talkgroup	Assignment	RX Freq	RX Tone/NAC	TX Freq	TX Tone/NAC	Mode A, D, M	Remarks
1	Command	NIFC C6	All Divisions	168.4750	127.3	173.8125	127.3	A	DALTON MTN
2	Command	NIFC C37	All Divisions	166.3125	127.3	171.7250	127.3	A	BLACK MTN
3	Command	NIFC C39	All Divisions	164.1625	127.3	172.1125	127.3	A	CRATER MTN
4	Command	NIFC C48	All Divisions	166.9125	127.3	173.7750	127.3	A	ALICE CREEK FIRE
5	Command	Stonewall	IA/Alice	171.1375		164.1500	114.8	A	Helena Local Forest Net (Tone 11)
6	Tactical	NIFC T1	DIV A	168.0500	127.3	168.0500	127.3	A	
7	Tactical	NIFC T2	DIV D	168.2000	127.3	168.2000	127.3	A	
8	Tactical	NIFC T3	DIV G/Night	168.6000	127.3	168.6000	127.3	A	
9	Tactical	NIFC T5	DIV S	166.7250	127.3	166.7250	127.3	A	
10	Tactical	NIFC T6	DIV Z	166.7750	127.3	166.7750	127.3	A	
11	Air to Ground	ARAST A/G	Arrastra Creek	169.9875		169.9875		A	Arrastra Fire Air to Ground
12	Air to Ground	Park A/G	Park Creek	166.9625		166.9625		A	Park Creek Air to Ground
13	Tactical	NIFC T7	IA TAC	168.2500	127.3	168.2500	127.3	A	IA TACTICAL
14	Air to Ground	A/G 66	IA Air to Ground	166.6750		166.6750		A	IA Air to Ground
15	Air Medical	TAN	Medical	155.3400		155.3400		A	AIR Medical
16	Emergency only	GUARD	All Divisions	168.6250		168.6250	110.9	A	AIR GUARD - emerg. use only
17		Blank							
18		Blank							
19	Air Medical	TAN	Medical	155.3400		155.3400		A	AIR Medical
20	Emergency only	GUARD	All Divisions	168.6250		168.6250	110.9	A	AIR GUARD - emerg. use only

Prepared By (Communications Unit Leader)

**Chris Perry COML**

Incident Location

County

Latitude, Longitude

Deviation is assumed to be narrow band unless otherwise noted in the remarks. Mode refers to either "A" (analog), "D" (digital) or "M" (mixed mode). 1/14/14 v.5



# AIR OPERATIONS SUMMARY

Prepared By: JoAnn Overacker  
*JoAnn Overacker*

Prepared Date 08/06/2017

Prepared Time: 1730

<b>1. INCIDENT NAME:</b> Park Creek / Arrastra Creek/Alice		<b>START TIME:</b> 0700	<b>END TIME:</b> 2100	<b>SUNRISE:</b> 0615	<b>SUNSET:</b> 2059
<b>2. OPS PERIOD DATE:</b> 08/07/2017					
<b>3. REMARKS (Safety Notes, Hazards, Air Operations, Special Equipment, etc.):</b> 804PJ is available for IA on Lewis & Clark					
<b>4. READY ALERT AIRCRAFT</b> MEDEVAC- N401HQ I.A. - N401HQ			<b>5.</b> TFR NOTAM 7/0042 5.0 nMile radius to 11,000 ft.		

6. PERSONNEL		NAME	PHONE #	7. FREQUENCIES	AM	FM	8. FIXED-WING- Type/ Make-Model/ N#/ Base
AOBD		JoAnn Overacker	209-559-1617	AIR/ AIR FW FM Air Tactics			AIRTANKERS - <u>Ordered by OPS</u>
ASGS				AIR/ AIR	118.4250		LEAD PLANES- <u>Ordered by OPS</u>
HEB2		Jim Dotson (8/9)	307-413-2024	Local IA A/G Freqs. A/G 66	HNF Yellow(IA)	166.6750 151.220	No Air Attack assigned. Request AA through Operations.
HEB2(t)		Bjorn Torberg	360-305-7957	A/G Primary A/G Secondary	Park/Alice Arrastra	166.9625 169.9875	Request buckets through Division to Helibase.
414		Enrique Olivares (8/13)		COMMAND Rx		RX 168.4750 TX 173.8125	CG 127.9
N401HQ		Brian Butler (HLF)	HLF NF Type-III	DNRC IA FREQS	124.975	RX 151.2200 TX 151.2200	Lincoln Airport (S69) 46° 57.315' x 112° 39.110' 122.9 Reservoir Lake 47° 01.717' x 112° 48.682' Mill Pond 46° 59.411' x 112° 38.943' Beaver Pond 46° 59.533' x 112° 41.160'
N214B		Gary Combie		Tan Air Medivac		RX 155.3400 TX 155.340	CG 110.9
3598D		Natalie Bench (8/13)		Air Guard		RX 168.625 TX 168.625	Helena Dispatch 406-444-4242
804PJ		Joel Anderson	A	National FF		CG 110.9 168.650 rx/tx	

**9. HELICOPTERS (Use Additional Sheets as Necessary)**

FAA N#	TY	MAKE/ MODEL	BASE	AVAIL	START	REMARKS	FAA N#	TY	MAKE/ MODEL	BASE	AVAIL	START	REMARKS
N214B	2	B214	Lincoln	0830	0800	BUCKET	3598D	3	AS350B2	Lincoln	0830	0800	Recon
804PJ	1	UH-60A	Lincoln	0830	0800	BUCKET	N401HQ	3	AS350B3	Lincoln	0830	0800	IA/short haul
414	1	Kamax	Lincoln	0830	0800	BUCKET							

**10. TASK/ MISSION/ ASSIGNMENT (Type/function includes: Air Tactical, Retardant, Recon, Personnel Transport, Bucket Operations, SAR, etc.)**

TYPE/FUNCTION	NAME OF PERSONNEL OR CARGO (if applicable) or instructions for tactical aircraft	MISSION START	FLY FROM	FLY TO
Bucket Work		As Needed		
Recon	Operations	10:00	Helibase	Fire
Recon	OPS/IC	1400	Helibase	Fire



## Health & Safety Message

<b>Incident:</b> Park, Arrastra, & Alice Creeks MT-HLF-000146, 166, 179	<b>Date/Op Period:</b> Day/Night Shift 8/7-8/17 0600-0600
--	--

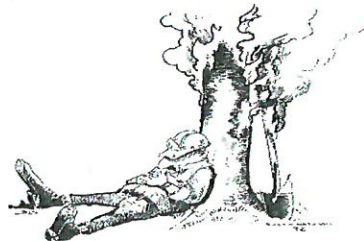
### Hazards & Risks

**Emergency Medical:** Review and brief the medical treatment and evacuation plan on the ICS 206 Medical Plan. Be familiar with radio frequencies, locations of your line EMT's, patient treatment and evacuation protocol. Ambulances are staged on the fire along with EMT's assigned to each division.

**Snag Hazards:** Fire weakened timber and falling snags are found in all Divisions. Reference the IRPG for considerations and mitigation measures. Apply sound risk management when considering tree felling and establish safe work areas. Stage equipment and personnel well away from the edge of the fire line where hazards are present.

**Vehicle Operations:** Respect the local traffic laws and use extra caution when driving along forest roads in your areas of operation. Drive cautiously and SLOWLY through downtown Lincoln.

Watch Out to Consider:



18. TAKING A NAP NEAR THE FIRELINE

**Prepared By: Paul Tompkins SOFR2**

**L. Lookouts C. Communications E. Escape Routes S. Safety Zones**

**Be MINDFUL**



## INCIDENT SAFETY ANALYSIS 215a

Park, Arrastra and Alice Fires - Monday August 07, 2017

8. Location	9. Hazard	6. Control or Abatement Action (Engineering, Administrative, PPE, Avoidance, Education, etc)
ALL	<b>Snags, Hazard Trees along roads and in all Division work areas.</b>	The strategy for these fires is to minimize firefighter exposure to snag by avoidance and using mechanized equipment to fell and remove trees and fuel from roads/control lines. Fireline personnel must do a risk assessment before operating in areas with snags. Avoid snag concentration areas and avoid falling of hazard trees if possible, green trees may also be compromised. Brief incoming personnel of location/nature of hazardous trees. Use only certified, experienced fallers for chain saw operations to fell snags. Watch for snags where you park, take a break or sleep. Set "no work zones" to avoid hazard trees that cannot be removed or felled safely.
D,G,S,IA	<b>Indirect Line, unsecured anchor points, unburned fuel between line and fire, steep terrain hampers view of fires and access to fires</b>	LCES in place before engaging, ensure use of qualified lookouts, monitor fire behavior & Wx reports, set trigger points, drill for escape routes and safety zones. Use line scouts, air resources to help size up. Provide for EMT medical response and Safety Officer for each Division. Personnel will follow the 10 Standard Fire Orders and discuss the 18 Watch Out Situations during briefings and fireline operations.
ALL	<b>Night operations</b>	<ul style="list-style-type: none"> <li>~ Maintain high visibility in work area and wear vest while in roadway.</li> <li>~ Use glow sticks to mark hazards.</li> <li>~ Ensure personnel have a personal light (headlamp)</li> <li>~ Watch for signs of fatigue</li> <li>~ Take breaks away from areas of known hazard</li> </ul>
Z,D,G,S	<b>Ignition Operations</b>	Ignite only with Operational Approval and after all adjoining resources notified, the required organization is in place and a contingency plan has been identified. All personnel are in required PPE. Keep personnel clear of aerial ignition zone. establish clear communications and POC with Pilot and crew.
A,Z,D,G, IA, Contingency,	<b>Wildland /Urban Interface. Burnout around structures and roads. Potential to expose FFs to HAZMAT.</b>	Coordinate with Lincoln VFD. Prepare Structure protection plan, prep structures, reduce fuels, size up hazmat, low electrical lines, fuel tanks & remove safely if possible. Avoid unlabeled drums/barrels. Notify OPS, DIVS, SOFRs and adjacent resources before ignitions and if any problems areas.
ALL	<b>Wildlife Encounters</b>	Don't feed or approach wildlife, implement food storage security for bears, no food or in tents, drive defensively, use passengers for additional situational awareness, carry bear spray only after training, follow local District protocols and report any bear encounters. If you get Bear spray from your Division Supervisor, attend Bear Spray training training from the District READ before field work.
A,Z,D,G	<b>Chipper Operations</b>	Use only qualified operators, review and adhere to JHA recommendations, use proper PPE, maintain safety zone around chipper.
A,Z,D,G	<b>Logging Operations using Feller bunchers, Skidders, Log Trucks, Dump trucks, Forwarders, tenders-</b>	Provide supervision. Use only qualified operators and inspected equipment. Review and adhere to JHA recommendations, use proper PPE, maintain 300 foot safety zone around working machines to prevent injuries and accidents. Do not sit or place tools on equipment.

INCIDENT RADIO COMMUNICATIONS PLAN		Incident Name		Date/Time Prepared		Operational Period Date/Time			
PARK,ARRASTRA,ALICE FIRE		08/06/17 1900		08/07-08/17 0700-0700					
Zn / Ch	Function	Channel Name/Trunked Talkgroup	Assignment	RX Freq	RX Tone/NAC	TX Freq	TX Tone/NAC	Mode A, D, M	Remarks
1	Command	NIFC C6	All Divisions	168.4750	127.3	173.8125	127.3	A	DALTON MTN
2	Command	NIFC C37	All Divisions	166.3125	127.3	171.7250	127.3	A	BLACK MTN
3	Command	NIFC C39	All Divisions	164.1625	127.3	172.1125	127.3	A	CRATER MTN
4	Command	NIFC C48	All Divisions	166.9125	127.3	173.7750	127.3	A	ALICE CREEK FIRE
5	Command	Stonewall	IA/Alice	171.1375		164.1500	114.8	A	Helena Local Forest Net (Tone 11)
6	Tactical	NIFC T1	DIV A	168.0500	127.3	168.0500	127.3	A	
7	Tactical	NIFC T2	DIV D	168.2000	127.3	168.2000	127.3	A	
8	Tactical	NIFC T3	DIV G/Night	168.6000	127.3	168.6000	127.3	A	
9	Tactical	NIFC T5	DIV S	166.7250	127.3	166.7250	127.3	A	
10	Tactical	NIFC T6	DIV Z	166.7750	127.3	166.7750	127.3	A	
11	Air to Ground	ARAST A/G	Arrastra Creek	169.9875		169.9875		A	Arrastra Fire Air to Ground
12	Air to Ground	Park A/G	Park Creek	166.9625		166.9625		A	Park Creek Air to Ground
13	Tactical	NIFC T7	IA TAC	168.2500	127.3	168.2500	127.3	A	IA TACTICAL
14	Air to Ground	A/G 66	IA Air to Ground	166.6750		166.6750		A	IA Air to Ground
15	Air Medical	TAN	Medical	155.3400		155.3400		A	AIR Medical
16	Emergency only	GUARD	All Divisions	168.6250		168.6250	110.9	A	AIR GUARD - emerg. use only
17		Blank							
18		Blank							
19	Air Medical	TAN	Medical	155.3400		155.3400		A	AIR Medical
20	Emergency only	GUARD	All Divisions	168.6250		168.6250	110.9	A	AIR GUARD - emerg. use only

Prepared By (Communications Unit Leader)

**Chris Perry COML**

Deviation is assumed to be narrow band unless otherwise noted in the remarks. Mode refers to either "A" (analog), "D" (digital) or "M" (mixed mode).

Incident Location  
County Latitude, Longitude

1/14/14 v.5



<b>MEDICAL PLAN</b>	1. INCIDENT NAME <b>PARK CREEK</b>	2. DATE PREPARED <b>8-6-17</b>	3. TIME PREPARED <b>1900</b>	4. OPERATIONAL PERIOD <b>8/7/2017- 8/8/2017 0700-0700</b>				
<b>5. INCIDENT MEDICAL AID STATIONS</b>								
MEDICAL AID STATIONS		LOCATION		PARAMEDICS YES NO				
Medical Unit		Park Creek ICP						
<b>6. TRANSPORTATION</b>								
<b>A. Air Ambulances</b>								
NAME		ADDRESS		PHONE PARAMEDICS YES NO				
Life Flight [Radio freq. contact ship on TAN] NVG/Medic and Nurse		Missoula, Montana		Park Creek Communications X				
Reach Air Medical[Radio freq. contact ship on TAN] NVG/Medic and Nurse, LZ @ Lincoln Airport		Bozeman, Montana		Park Creek Communications X				
HLNF Extraction helicopter (N401HQ) [Incident A/G] SHORT HAUL ONLY, LZ @ Lincoln Airport		Park Creek Helibase		Park Creek Communications X				
Two Bear Air [Radio freq. contact ship on TAN] Rescue/Hoist, NVG NON-TRANSPORT, LZ @ Airport		Kalispell, Montana		Park Creek Communications X				
<b>B. Ground Ambulances</b>								
Lincoln Rural Ambulance		Rte. 200 Lincoln , MT		Park Creek Communications X				
<b>7. HOSPITALS</b>								
NAME	ADDRESS	TRAVEL TIME		PHONE	HELIPAD		BURN CENTER	
		AIR	GRND		YES	NO	YES	NO
St. Patrick's Hospital <b>L-2 Trauma/STEMI/Stroke</b>	500 W. Broadway, Missoula, MT Lat: N 46°52.512' Long: 114°00.010'	20m	2h	406-543-7271	X			X
St. Peter's Hospital <b>L-3 Trauma</b>	2475 Broadway, Helena, MT N: 46°34.90 Long: 111°59.76'	20m	1h	406-442-2480	X			X
Benefits Hospital <b>L-2 Trauma</b>	500 15 <sup>th</sup> Avenue, Great Falls, MT N: 47°29.283' Long: 111°17.812'	30m	1.5h	406-455-5000	X			X
Harbor View Medical Center <b>L-1 Trauma</b>	325 9th Avenue, Seattle, WA N: 47°36.23' Long: 122°19.35'	3h	8.5h	206-744-3000	X			X
<b>8. MEDICAL EMERGENCY PROCEDURES</b>								
<b>9-LINE Medical Incident Report ( pages 108-109 of the IRPG)</b> 1. Advise Division on Tac. Division contact <b>Park Communications on Command</b> . If unable to reach Division go direct to <b>Park Communications on Command</b> . a. If life threatening, request frequency be cleared for emergency traffic 2. Incident Status: a. Nature of injury/illness? b. Identify on-scene IC/Point of Contact c. Identify on-scene care provider, request one if needed 3. Initial patient assessment a. Refer to Injury Reporting Worksheet 4. Determine severity and transport priority 5. Develop transport plan a. Air/Ground, Need for hoist 6. Determine need for additional resources 7. Confirm Communications 8. Evacuation Location: a. GPS (WGS84) or landmarks b. ETA to Evacuation Location 9. Contingency Plan 10. <b>In Camp Emergency:</b> Contact <b>Park Communications on Command</b>			<b><u>INJURY REPORTING PROCEDURES</u></b> NATURE OF INJURY _____ LOCATION OF PATIENT _____ TRANSPORTATION REQUESTED BY: AIR ___ GROUND ___ POINT OF PICKUP _____ LAT _____ LONG _____ PATIENT UNIT ID _____ <small>REMINDER: DO NOT GIVE PT NAME OVER RADIO</small> IS A EMT WITH PATIENT: YES ___ NO ___ AGE _____ SEX: MALE ___ FEMALE ___ <b>ALL EMERGENCIES—Secure the area and identify witnesses for later investigation. Keep an accurate log of events.</b>  <b>Medical Unit Leader</b> <b>ICP: Gena Fowlkes (909) 762-9032</b>					
<b>ICS 206 8-78</b>	9. PREPARED BY (MEDICAL UNIT LEADER) <b>Gena Fowlkes MEDL</b>	10. REVIEWED BY (SAFETY OFFICER) <b>James Aragon SOF2</b>						

## Park Creek / Arrastra Creek / Alice Creek Incident

### BEAR SAFETY

#### Camp Precaution

Always leave a clean camp.

Store odorous items such as food, coolers, utensils and toiletries in a hard-sided vehicle or food locker.

#### Backcountry and Trail Precautions

Never surprise bears! If you're hiking, make your presence known. Make noise by talking loudly, singing, or wearing a bell. If you can, travel with a group. Groups are noisier and easier for bears to detect.

Keep in mind that bears tend to be more active at dawn and dusk. Keep an eye out for tracks, scat, digs, and trees that bears have rubbed.

#### What to Do if You Encounter a Bear

If you encounter a bear, you should try to remain calm and avoid sudden movements.

Give the bear plenty of room, allowing it to continue its activities undisturbed. If it changes its behavior, you're too close, so back away.

If you see a bear but the bear doesn't see you, detour quickly and quietly. If a bear spots you, try to get its attention while it is still farther away. You want it to know you're human, so talk in a normal voice and wave your arms. You can throw something onto the ground (like your camera) if the bear pursues you, as it may be distracted by this and allow you to escape. However, you should never feed or throw food to a bear.

Remember that a standing bear is not always a sign of aggression. Many times, bears will stand to get a better view.

#### What to Do if a Bear Charges

Remember that many bears charge as a bluff. They may run, then veer off or stop abruptly.

Stand your ground until the bear stops, then slowly back away. Never run from a bear! They will chase you, and bears can run faster than 30 mph.

Don't run towards or climb a tree. Black bears and some grizzlies can climb trees, and many bears will be provoked to chase you if they see you climbing.

Jen Ryan (REAF)

Kate Condon (t)





## Human Resources Message



## ALCOHOL AND NON-PRESCRIPTION DRUG-FREE INCIDENT



Incident Human Resource Specialist is Alan Seago, (707) 315-6537.  
Location: in the yurt-shaped tent between the IC's tent and the gravel road.



**The trainee of today will train the future of tomorrow.**

**Take advantage now and do it right!**



**Trainees and evaluators don't wait till the last minute utilize above QR code or fill out this form and drop it off with the TNSP located in the check-in yurt.**

**All incident trainees needed to check out with training prior to DMOB; a completed performance rating (ICS 255) and an Evaluation Record is needed.**

**TRAINEE's DATA**

Name (PRINT ): \_\_\_\_\_ ICS Trainee Position: \_\_\_\_\_

Request # (A,C,E,or O): \_\_\_\_\_ Agency Designator (Ex. CA-MNF): \_\_\_\_\_

USFS \_\_\_ State \_\_\_ BLM \_\_\_ BIA \_\_\_ NPS \_\_\_ FWS \_\_\_ Local Govt. \_\_\_ DOD \_\_\_ NWS \_\_\_

Date Assigned: \_\_\_\_\_ Cell Phone: \_\_\_\_\_

**TRAINING RECORDS TO BE EMAILED TO: (Chief, Training Officer, ect)**

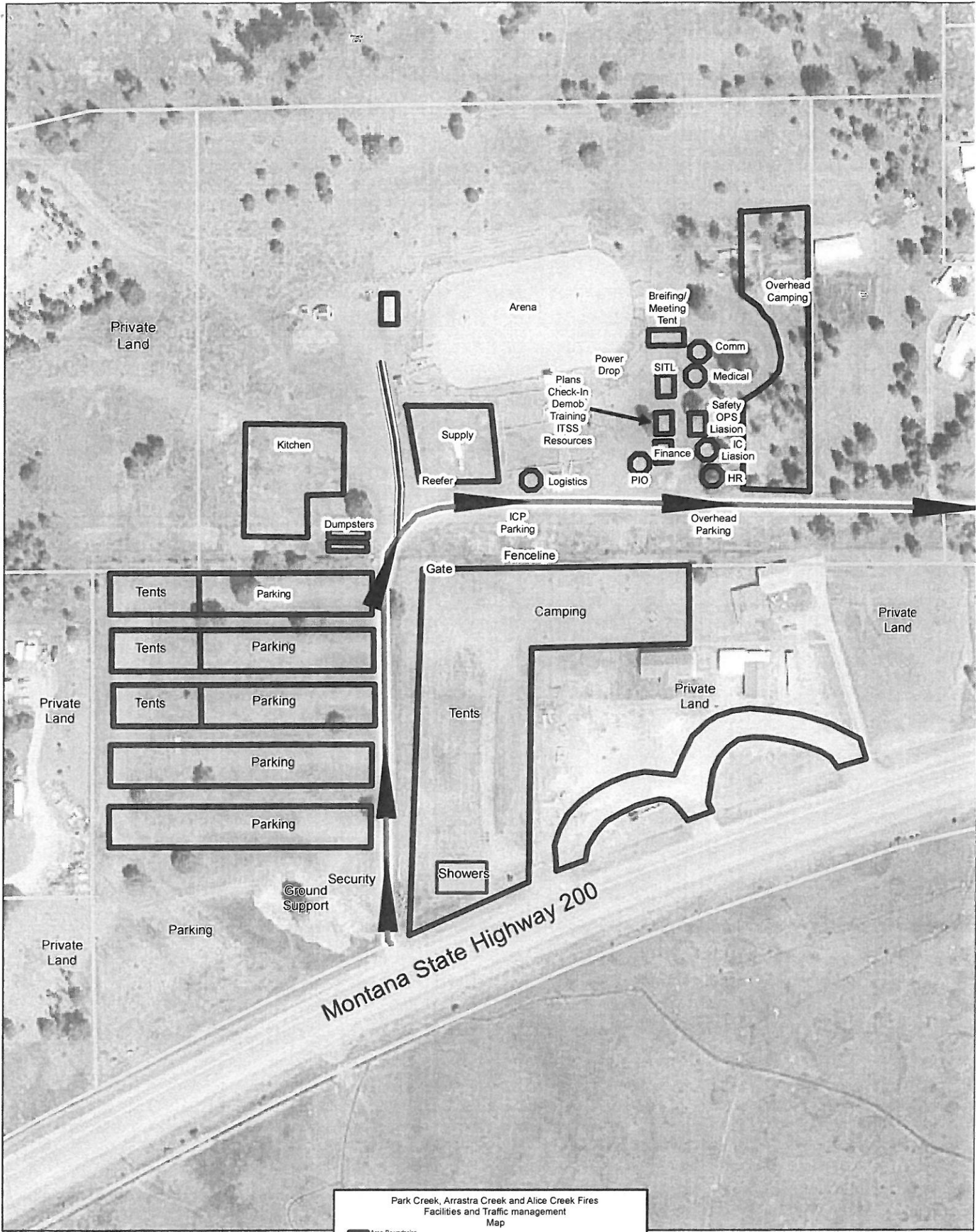
Name: \_\_\_\_\_ Email: \_\_\_\_\_

**TRAINER/EVALUATOR DATA**

Trainer/Evaluator Name: \_\_\_\_\_ ICS position on fire \_\_\_\_\_

Agency Designator(ex. CA-MNF): \_\_\_\_\_ Phone: \_\_\_\_\_





**Park Creek, Arrastra Creek and Alice Creek Fires  
Facilities and Traffic management  
Map**

- Area Boundaries
- Primary Access and Direction of Travel
- Service Vehicles Only
- Property Lines

0 25 50 100 150 200 250 300 Feet

Address of Camp:  
3802 West Montana Highway 200  
Lincoln, Montana 59639









### Medical Incident Report

**FOR ALL MEDICAL EMERGENCIES: IDENTIFY ON SCENE INCIDENT COMMANDER BY NAME AND POSITION AND ANNOUNCE "MEDICAL EMERGENCY" TO INITIATE RESPONSE FROM IMT COMMUNICATIONS/DISPATCH.**

**Use items one through nine to communicate situation to communications/dispatch.**

**1. CONTACT COMMUNICATIONS/DISPATCH**

*Ex: "Communications, Div. Alpha. Stand-by for Priority Medical Incident Report." (If life threatening request designated frequency be cleared for emergency traffic.)*

**2. INCIDENT STATUS: Provide incident summary and command structure.**

Nature of Injury/Illness		<i>Describe the injury (Ex: Broken leg with bleeding)</i>
Incident Name		<i>Geographic Name + "Medical" (Ex: Trout Meadow Medical)</i>
Incident Commander		<i>Name of IC</i>
Patient Care		<i>Name of Care Provider (Ex: EMT Smith)</i>

**3. INITIAL PATIENT ASSESSMENT: Complete this section for each patient. This is only a brief, initial assessment. Provide additional patient info after completing this 9 Line Report.**

Number of Patients:	Male / Female	Age:	Weight:
Conscious? <input type="checkbox"/> YES <input type="checkbox"/> NO = MEDEVAC!			
Breathing? <input type="checkbox"/> YES <input type="checkbox"/> NO = MEDEVAC!			
Mechanism of Injury: <i>What caused the injury?</i>			
Lat/Long (Datum WGS84) <i>Ex: N 40° 42.45' x W 123° 03.24'</i>			

**4. SEVERITY OF EMERGENCY, TRANSPORT PRIORITY**

SEVERITY	TRANSPORT PRIORITY
<input type="checkbox"/> <b>URGENT-RED</b> Life threatening injury or illness. <i>Ex: Unconscious, difficulty breathing, bleeding severely, 2° - 3° burns more than 4 palm sizes, heat stroke, disoriented.</i>	Ambulance or MEDEVAC helicopter. Evacuation need is <b>IMMEDIATE</b> .
<input type="checkbox"/> <b>PRIORITY-YELLOW</b> Serious Injury or illness. <i>Ex: Significant trauma, not able to walk, 2° - 3° burns not more than 1-2 palm sizes.</i>	Ambulance or consider air transport if at remote location. Evacuation may be <b>DELAYED</b> .
<input type="checkbox"/> <b>ROUTINE-GREEN</b> Not a life threatening injury or illness. <i>Ex: Sprains, strains, minor heat-related illness.</i>	Non-Emergency. Evacuation considered <b>Routine of Convenience</b> .

**5. TRANSPORT PLAN:**

**Air Transport:** (Agency Aircraft Preferred)

<input type="checkbox"/> Helispot	<input type="checkbox"/> Short-haul/Hoist	<input type="checkbox"/> Life Flight	<input type="checkbox"/> Other
<b>Ground Transport:</b>			
<input type="checkbox"/> Self-Extract	<input type="checkbox"/> Carry-Out	<input type="checkbox"/> Ambulance	<input type="checkbox"/> Other

**6. ADDITIONAL RESOURCE/EQUIPMENT NEEDS:**

<input type="checkbox"/> Paramedic/EMT(s)	<input type="checkbox"/> Crew(s)	<input type="checkbox"/> SKED/Backboard/C-Collar
<input type="checkbox"/> Burn Sheet(s)	<input type="checkbox"/> Oxygen	<input type="checkbox"/> Trauma Bag
<input type="checkbox"/> Medication(s)	<input type="checkbox"/> IV/Fluid(s)	<input type="checkbox"/> Cardiac Monitor/AED
<input type="checkbox"/> Other (i.e. splints, rope rescue, wheeled litter)		

**7. COMMUNICATIONS:**

Function	Channel Name/Number	Receive (Rx)	Tone/NAC *	Transmit (Tx)	Tone/NAC *
<i>Ex: Command</i>	<i>Forest Rpt, Ch. 2</i>	<i>168.3250</i>	<i>110.9</i>	<i>171.4325</i>	<i>110.9</i>
COMMAND					
AIR-TO-GRND					
TACTICAL					

\*(NAC for digital radio system)

**8. EVACUATION LOCATION:**

Lat/Long (Datum WGS84) <i>EX: N 40 42.45' x W 123 03.24'</i>	
Patient's ETA to Evacuation Location:	
Helispot/Extraction Size and Hazards:	

**9. CONTINGENCY:**

**Considerations:** *If primary options fail, what actions can be implemented in conjunction with primary evacuation method? Be thinking ahead...*

**REMEMBER:** Confirm ETA's of resources ordered  
Act according to your level of training  
Be Alert. Keep Calm. Think Clearly. Act Decisively.