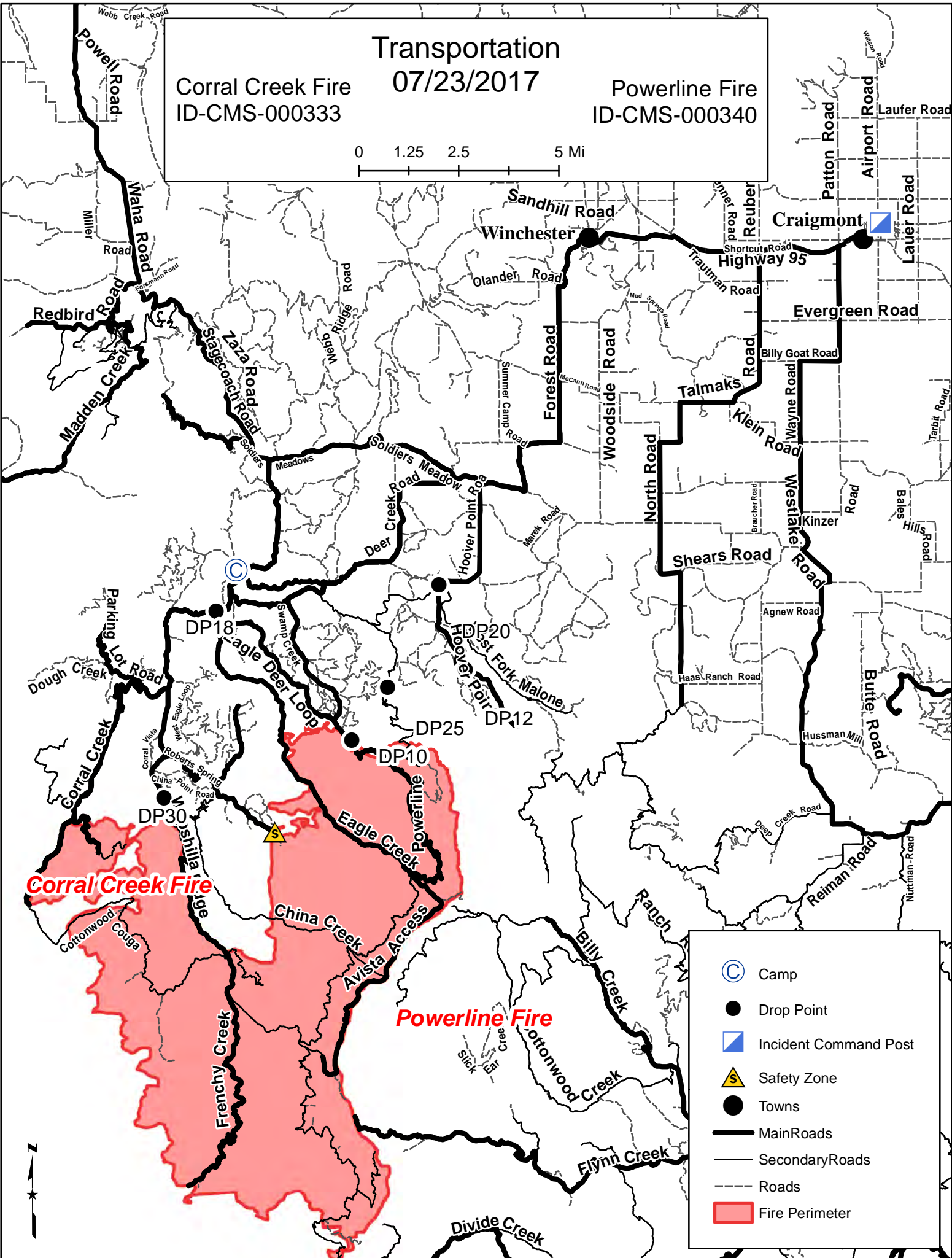





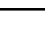





**Transportation**  
**07/23/2017**

Corral Creek Fire ID-CMS-000333      Powerline Fire ID-CMS-000340

0   1.25   2.5   5 Mi



-  Camp
-  Drop Point
-  Incident Command Post
-  Safety Zone
-  Towns
-  Main Roads
-  Secondary Roads
-  Roads
-  Fire Perimeter