

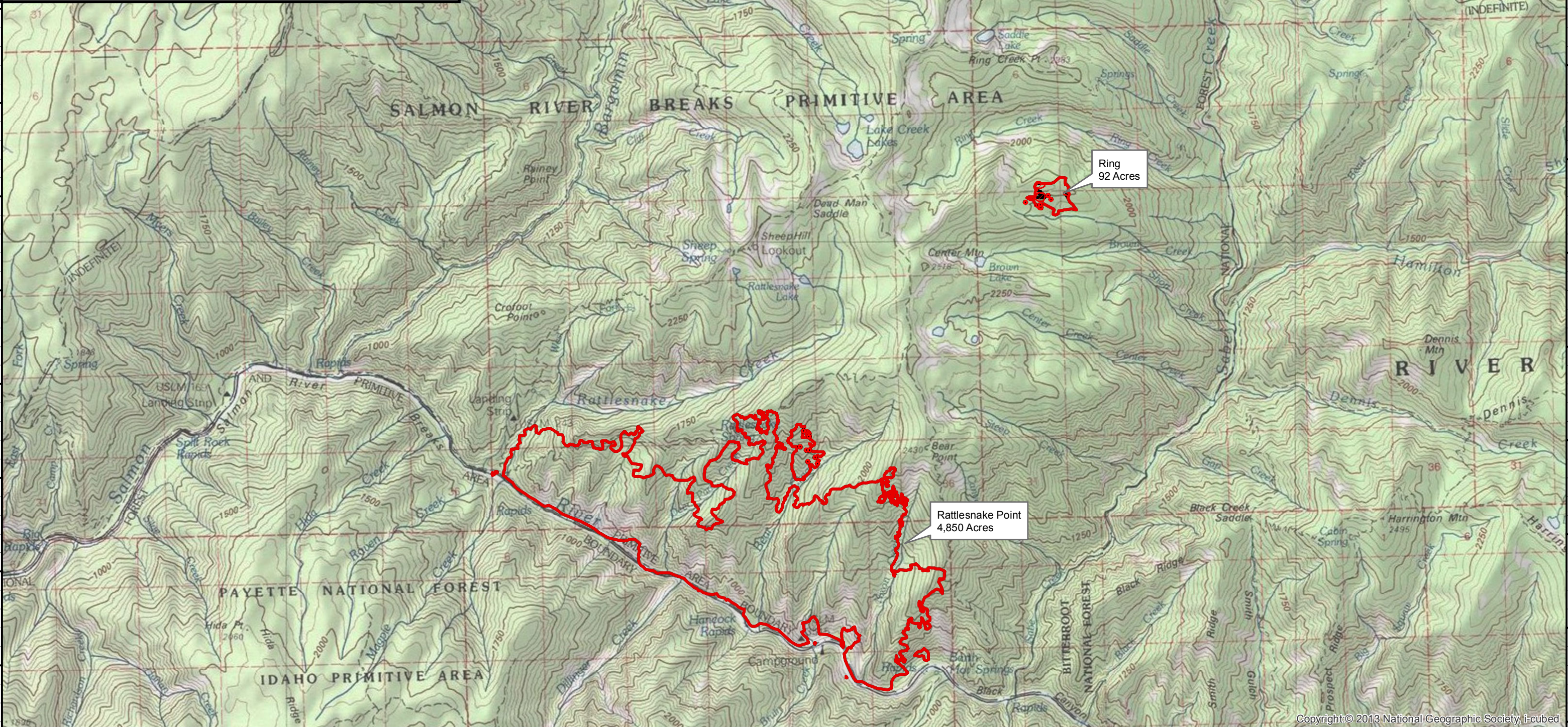
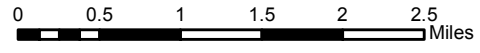
115°16'W 115°15'W 115°14'W 115°13'W 115°12'W 115°11'W 115°10'W 115°9'W 115°8'W 115°7'W 115°6'W 115°5'W 115°4'W 115°3'W 115°2'W 115°1'W 115°0'W 114°59'W 114°58'W 114°57'W 114°56'W 114°55'W 114°54'W 114°53'W

**Infrared Map**  
**Rattlesnake Point (ID-NCF-000317)**  
**Map Date: 09/11/2017**  
**Imagery Date: 09/11/2017**  
**Imagery Time: 0212 MDT**  
**IR Interpreted Acres: 5,351 acres**  
**Rattlesnake Point: 4,850**  
**Bleak: 409; Ring: 92**  
**IRIN: Tina Rotenbury**

- Isolated Heat Sources
- Intense Heat
- Scattered Heat
- Heat Perimeter
- Previous Heat Perimeter



NAD 1983 UTM zone 11N



115°16'W 115°15'W 115°14'W 115°13'W 115°12'W 115°11'W 115°10'W 115°9'W 115°8'W 115°7'W 115°6'W 115°5'W 115°4'W 115°3'W 115°2'W 115°1'W 115°0'W 114°59'W 114°58'W 114°57'W 114°56'W 114°55'W 114°54'W