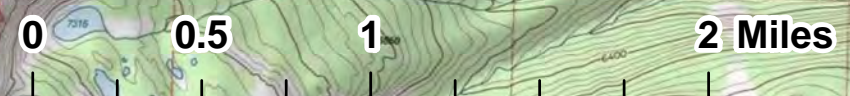
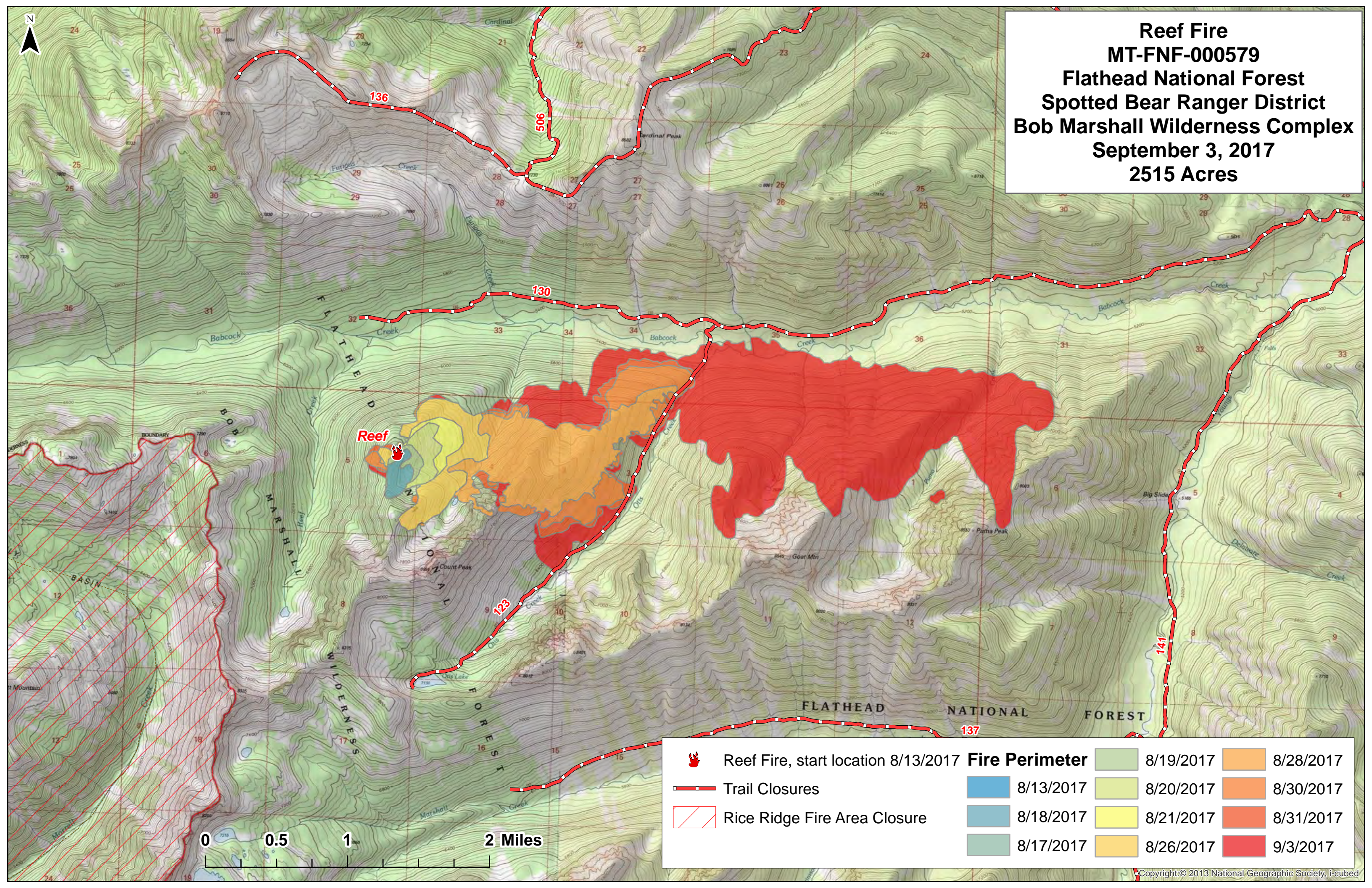


Reef Fire
MT-FNF-000579
Flathead National Forest
Spotted Bear Ranger District
Bob Marshall Wilderness Complex
September 3, 2017
2515 Acres



Reef Fire, start location 8/13/2017	Fire Perimeter	8/19/2017	8/28/2017
Trail Closures	8/13/2017	8/20/2017	8/30/2017
Rice Ridge Fire Area Closure	8/18/2017	8/21/2017	8/31/2017
	8/17/2017	8/26/2017	9/3/2017