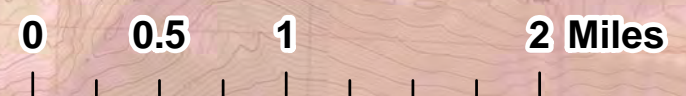
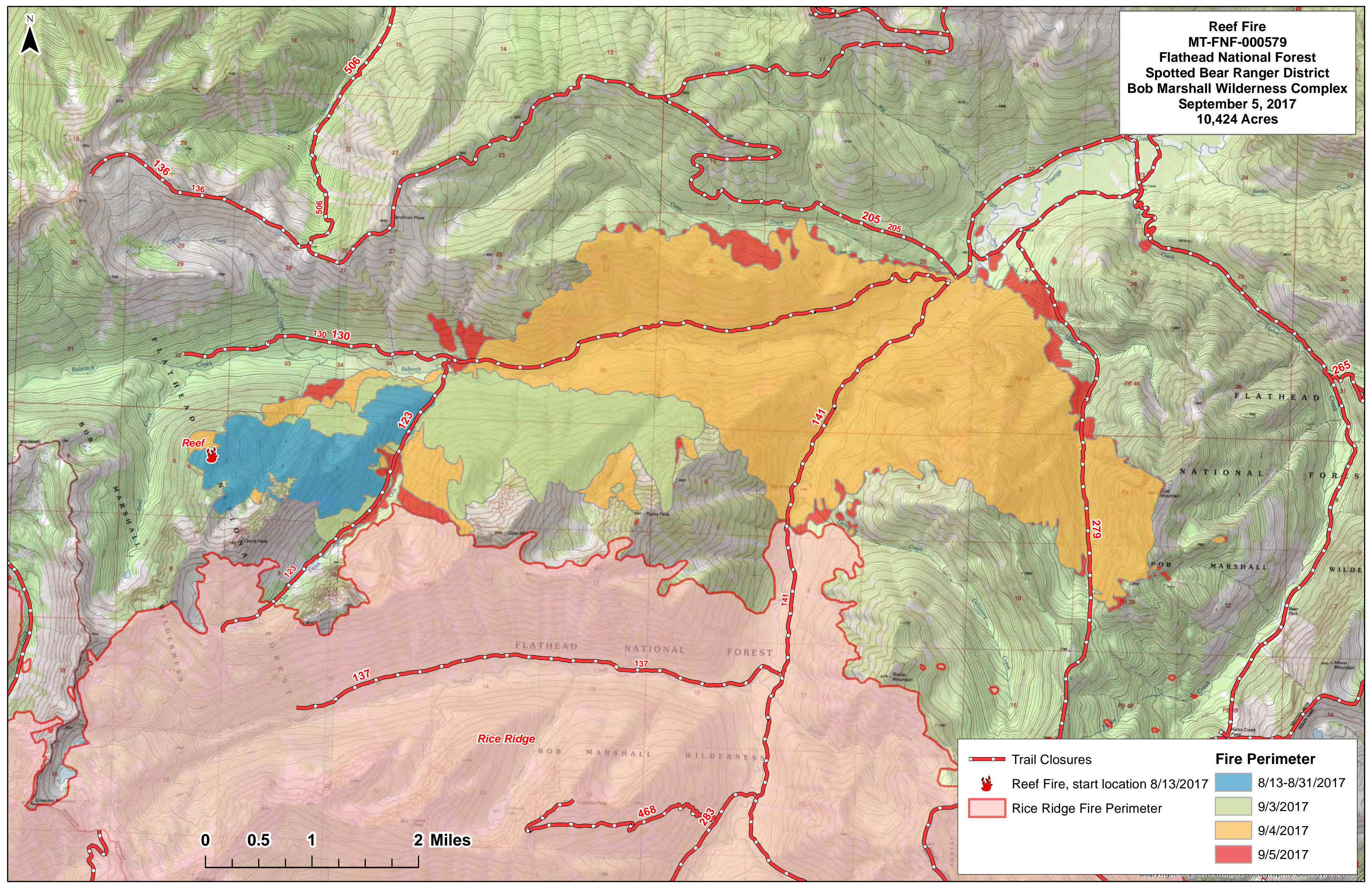









Reef Fire
MT-FNF-000579
Flathead National Forest
Spotted Bear Ranger District
Bob Marshall Wilderness Complex
September 5, 2017
10,424 Acres



	Trail Closures		8/13-8/31/2017
	Reef Fire, start location 8/13/2017		9/3/2017
	Rice Ridge Fire Perimeter		9/4/2017
			9/5/2017