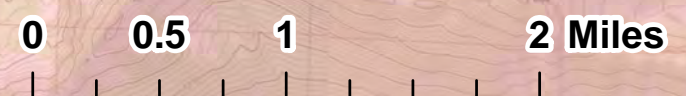
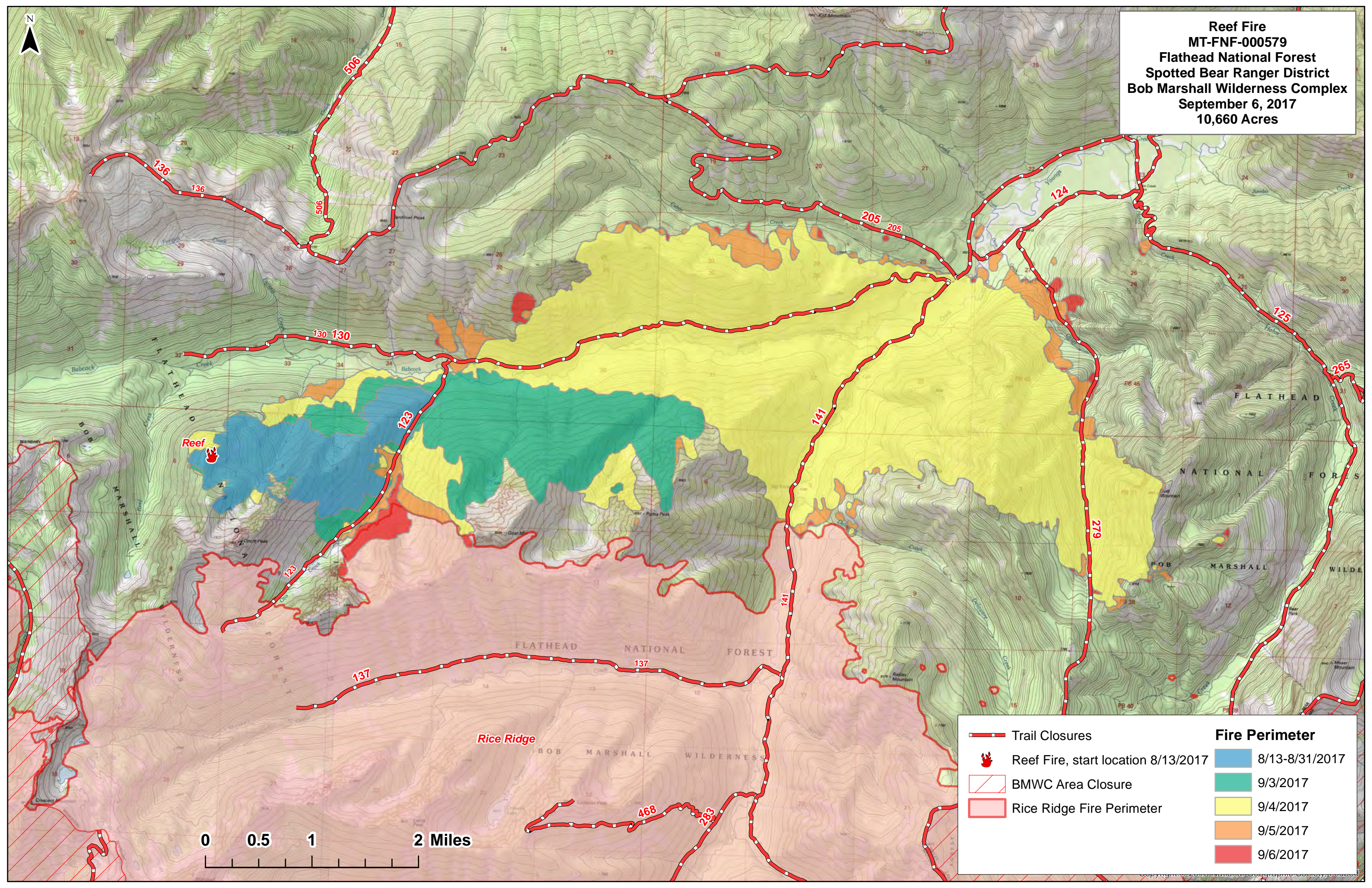


Reef Fire
MT-FNF-000579
Flathead National Forest
Spotted Bear Ranger District
Bob Marshall Wilderness Complex
September 6, 2017
10,660 Acres



Trail Closures	8/13-8/31/2017
Reef Fire, start location 8/13/2017	9/3/2017
BMWC Area Closure	9/4/2017
Rice Ridge Fire Perimeter	9/5/2017
	9/6/2017