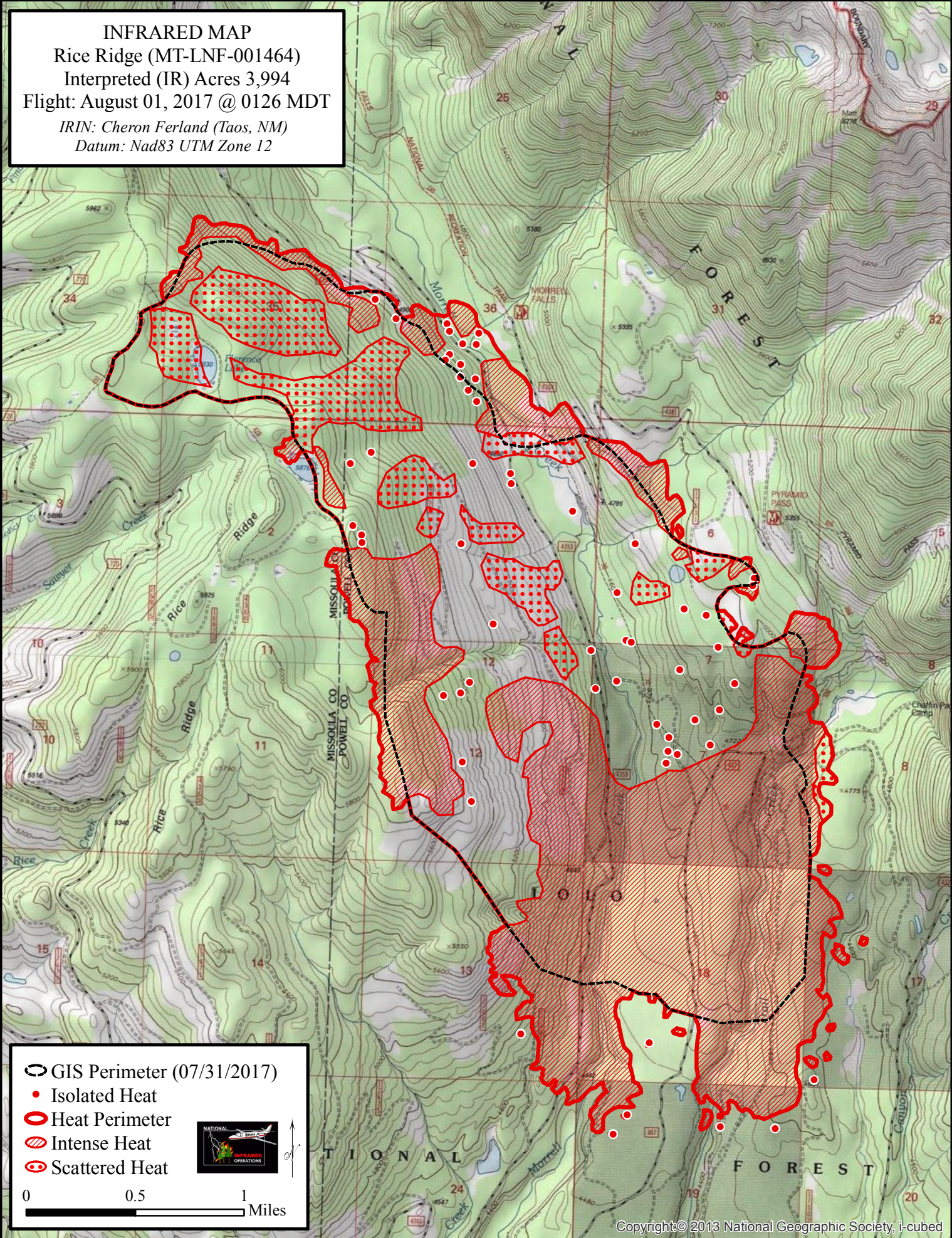



113°30'0"W 113°29'0"W 113°28'0"W 113°27'0"W 113°26'0"W 113°25'0"W

47°17'0"N
47°16'30"N
47°16'0"N
47°15'30"N
47°15'0"N
47°14'30"N
47°14'0"N
47°13'30"N
47°13'0"N

INFRARED MAP
Rice Ridge (MT-LNF-001464)
Interpreted (IR) Acres 3,994
Flight: August 01, 2017 @ 0126 MDT
IRIN: Cheron Ferland (Taos, NM)
Datum: Nad83 UTM Zone 12



- GIS Perimeter (07/31/2017)
- Isolated Heat
- Heat Perimeter
- Intense Heat
- Scattered Heat



0 0.5 1 Miles

113°29'0"W 113°28'0"W 113°27'0"W 113°26'0"W 113°25'0"W