

113°29'0"W

113°28'0"W

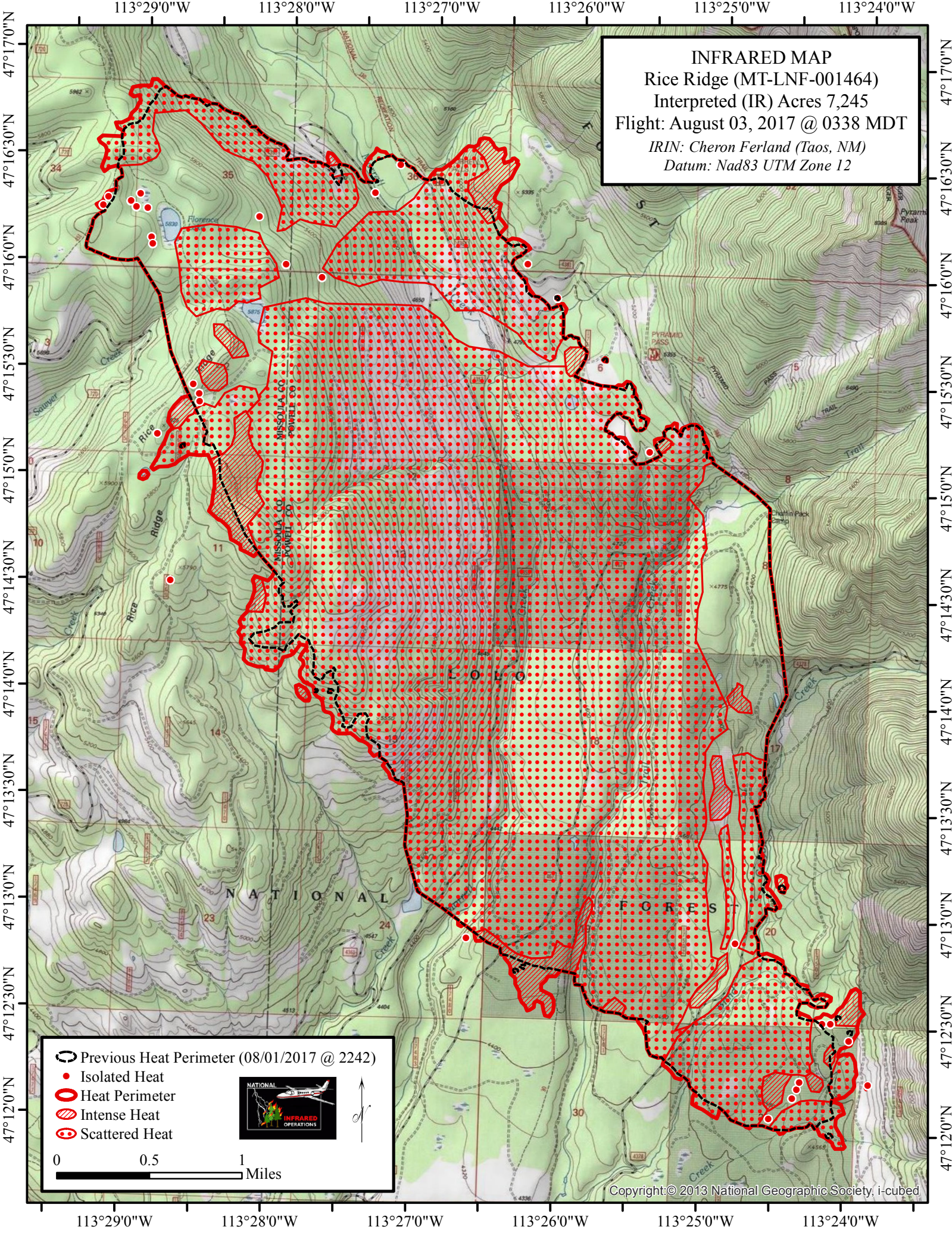
113°27'0"W

113°26'0"W


113°25'0"W


113°24'0"W

INFRARED MAP
 Rice Ridge (MT-LNF-001464)
 Interpreted (IR) Acres 7,245
 Flight: August 03, 2017 @ 0338 MDT
 IRIN: Cheron Ferland (Taos, NM)
 Datum: Nad83 UTM Zone 12



- Previous Heat Perimeter (08/01/2017 @ 2242)
- Isolated Heat
- Heat Perimeter
- Intense Heat
- Scattered Heat





0 0.5 1
 Miles

