

113°29'0"W

113°28'0"W

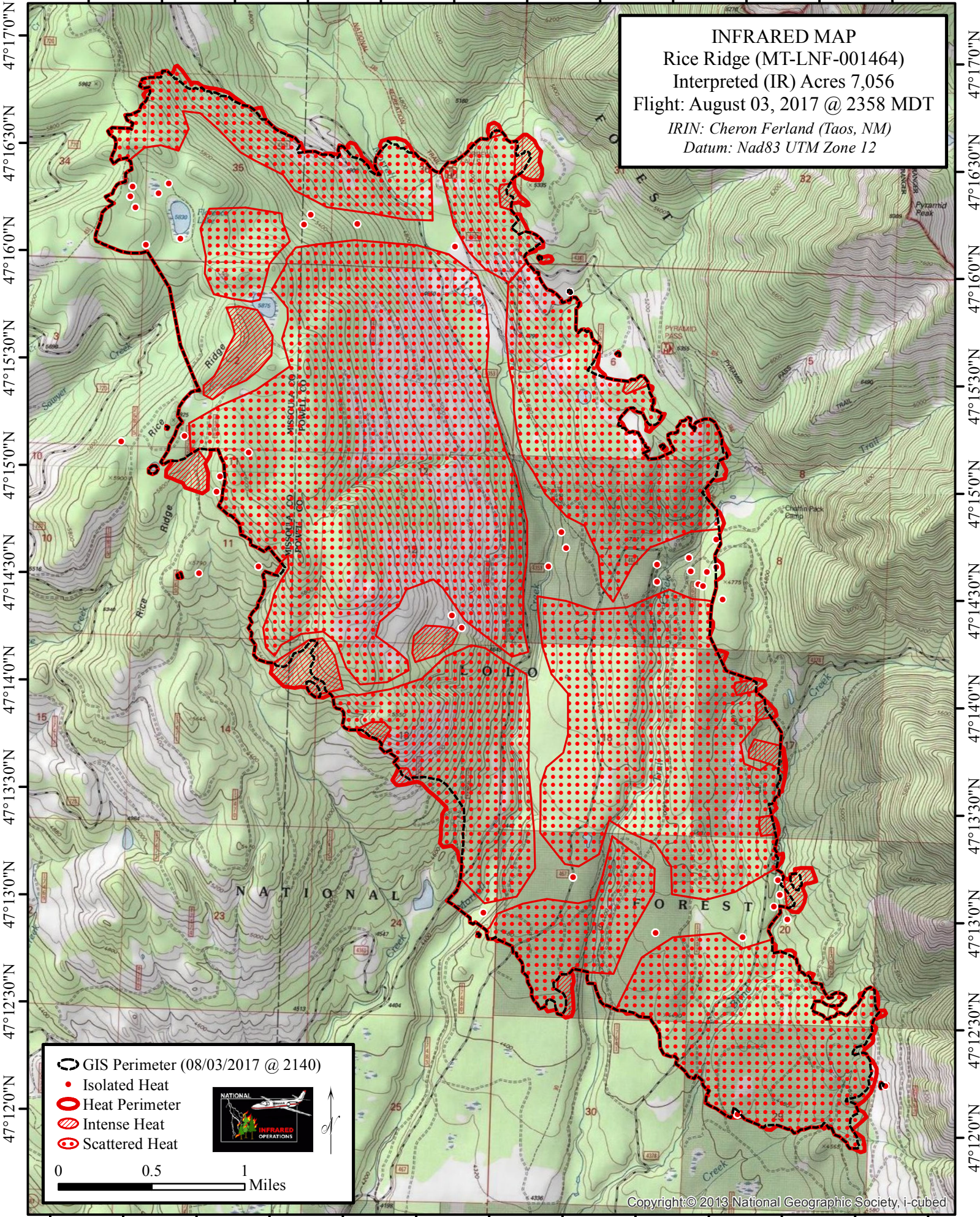
113°27'0"W

113°26'0"W


113°25'0"W

113°24'0"W

INFRARED MAP
 Rice Ridge (MT-LNF-001464)
 Interpreted (IR) Acres 7,056
 Flight: August 03, 2017 @ 2358 MDT
 IRIN: Cheron Ferland (Taos, NM)
 Datum: Nad83 UTM Zone 12



- GIS Perimeter (08/03/2017 @ 2140)
- Isolated Heat
- Heat Perimeter
- Intense Heat
- Scattered Heat



0 0.5 1 Miles

113°29'0"W 113°28'0"W 113°27'0"W 113°26'0"W 113°25'0"W 113°24'0"W