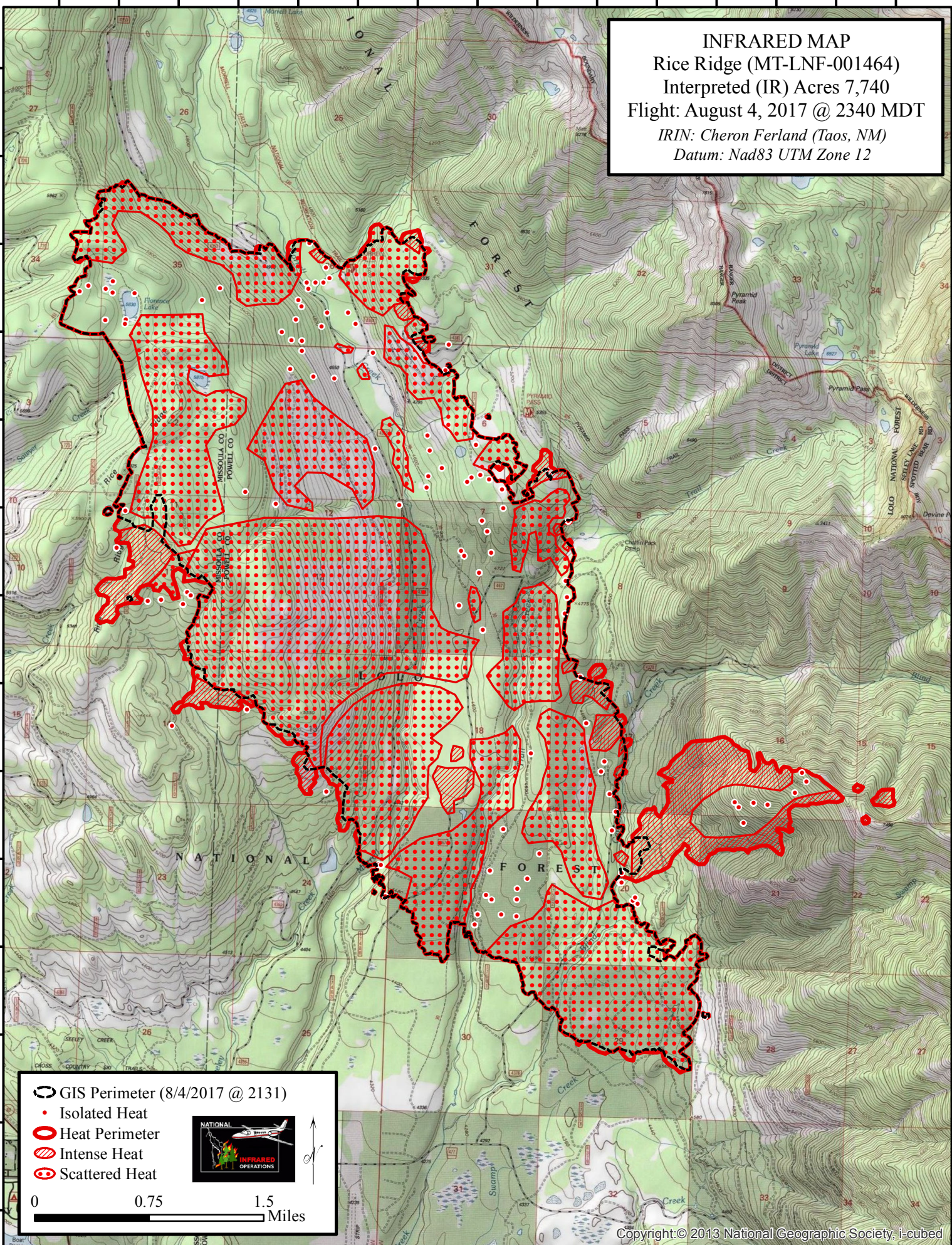

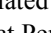
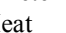





113°29'30"W 113°28'30"W 113°27'30"W 113°26'30"W 113°25'30"W 113°24'30"W 113°23'30"W 113°22'30"W

INFRARED MAP
Rice Ridge (MT-LNF-001464)
Interpreted (IR) Acres 7,740
Flight: August 4, 2017 @ 2340 MDT
IRIN: Cheron Ferland (Taos, NM)
Datum: Nad83 UTM Zone 12

47°11'0"N 47°11'30"N 47°12'0"N 47°12'30"N 47°13'0"N 47°13'30"N 47°14'0"N 47°14'30"N 47°15'0"N 47°15'30"N 47°16'0"N 47°16'30"N 47°17'0"N 47°17'30"N 47°18'0"N



 GIS Perimeter (8/4/2017 @ 2131)
 Isolated Heat
 Heat Perimeter
 Intense Heat
 Scattered Heat



0 0.75 1.5 Miles

113°29'30"W 113°28'30"W 113°27'30"W 113°26'30"W 113°25'30"W 113°24'30"W 113°23'30"W 113°22'30"W