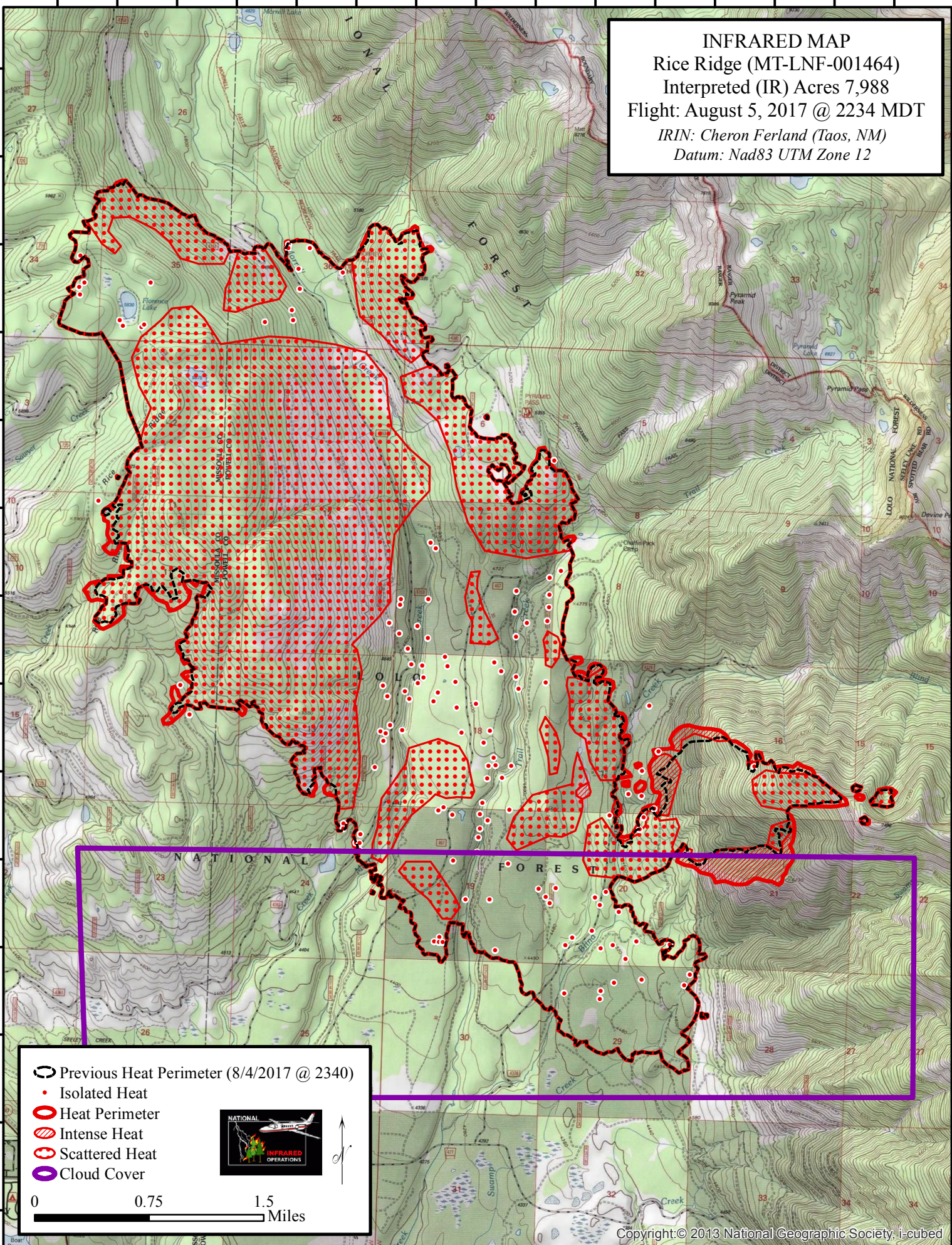


113°29'30"W 113°28'30"W 113°27'30"W 113°26'30"W 113°25'30"W 113°24'30"W 113°23'30"W 113°22'30"W

**INFRARED MAP**  
Rice Ridge (MT-LNF-001464)  
Interpreted (IR) Acres 7,988  
Flight: August 5, 2017 @ 2234 MDT  
IRIN: Cheron Ferland (Taos, NM)  
Datum: Nad83 UTM Zone 12

47°11'0"N 47°11'30"N 47°12'0"N 47°12'30"N 47°13'0"N 47°13'30"N 47°14'0"N 47°14'30"N 47°15'0"N 47°15'30"N 47°16'0"N 47°16'30"N 47°17'0"N 47°17'30"N 47°18'0"N



- Previous Heat Perimeter (8/4/2017 @ 2340)
- Isolated Heat
- Heat Perimeter
- Intense Heat
- Scattered Heat
- Cloud Cover

113°29'30"W 113°28'30"W 113°27'30"W 113°26'30"W 113°25'30"W 113°24'30"W 113°23'30"W 113°22'30"W