

113°30'W

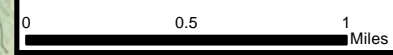
113°25'W

113°20'W

Infrared Map
Rice Ridge (MT-LNF-001464)
Map Date: 08/07/2017
Imagery Date: 08/06/2017
Imagery Time: 2232 MDT
IR Interpreted Acres: 8,209 acres
IRIN: Tammy Hocut

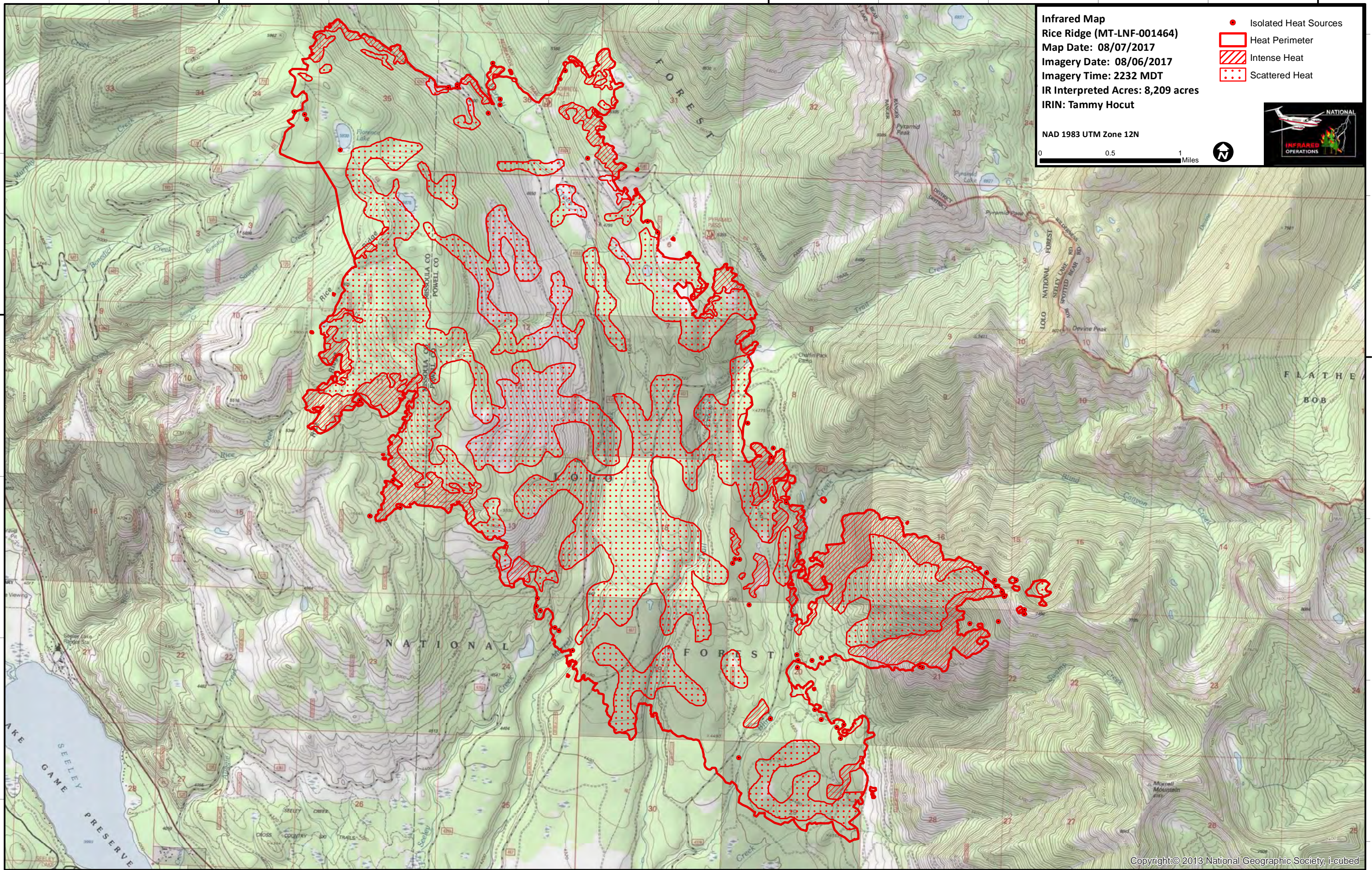
- Isolated Heat Sources
- Heat Perimeter
- Intense Heat
- Scattered Heat

NAD 1983 UTM Zone 12N



47°15'N

47°15'N



113°30'W

113°25'W

113°20'W