

113°30'W


113°25'W


113°20'W

**Infrared Map**  
**Rice Ridge (MT-LNF-001464)**  
**Map Date: 08/07/2017**  
**Imagery Date: 08/06/2017**  
**Imagery Time: 2232 MDT**  
**IR Interpreted Acres: 8,209 acres**  
**IRIN: Tammy Hocut**

- Isolated Heat Sources
- Heat Perimeter
- Intense Heat
- Scattered Heat

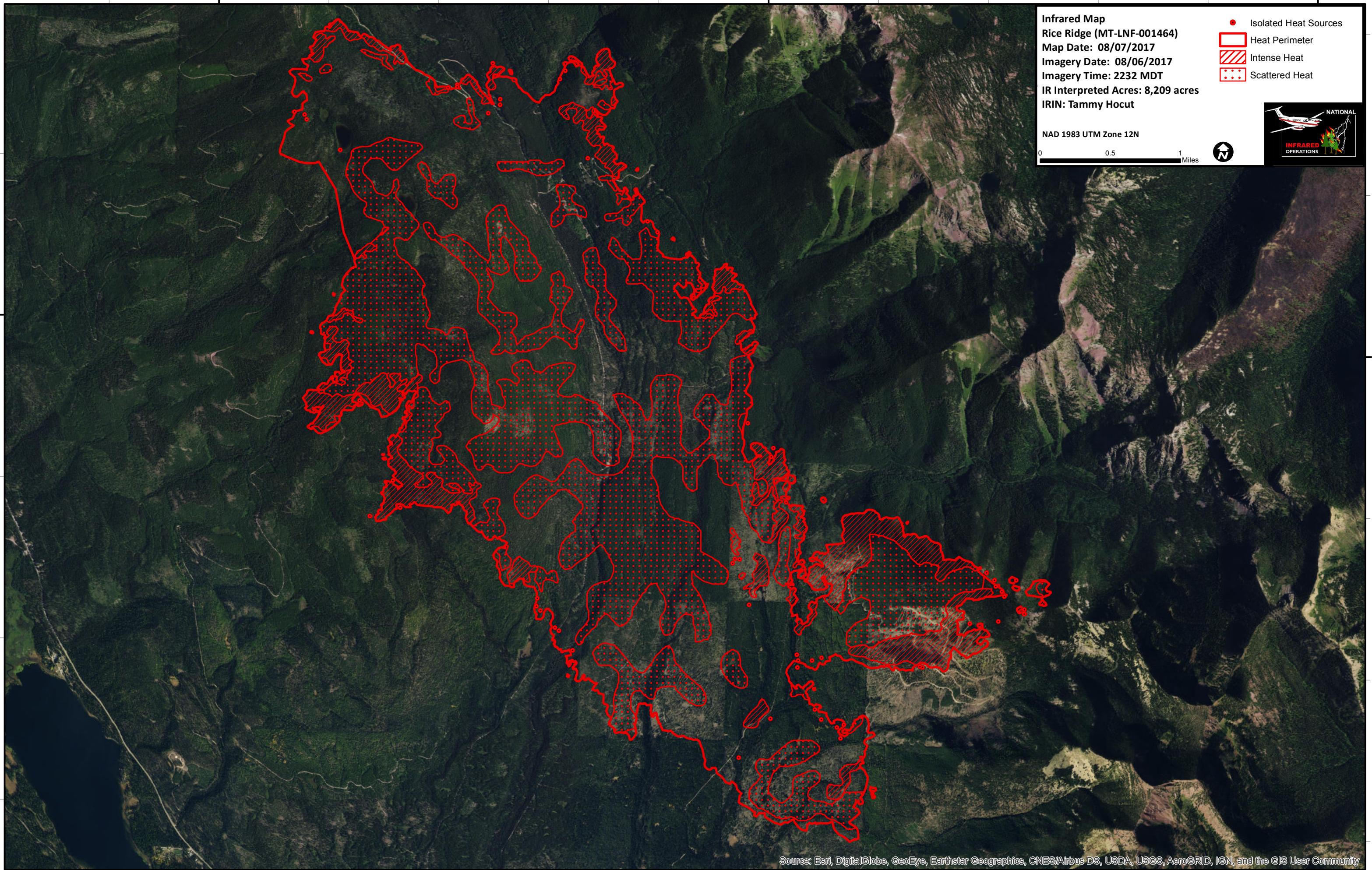
NAD 1983 UTM Zone 12N

0 0.5 1 Miles 



47°15'N

47°15'N



Source: Esri, DigitalGlobe, GeoEye, Earthstar Geographics, CNES/Airbus DS, USDA, USGS, AeroGRID, IGN, and the GIS User Community

113°30'W

113°25'W

113°20'W