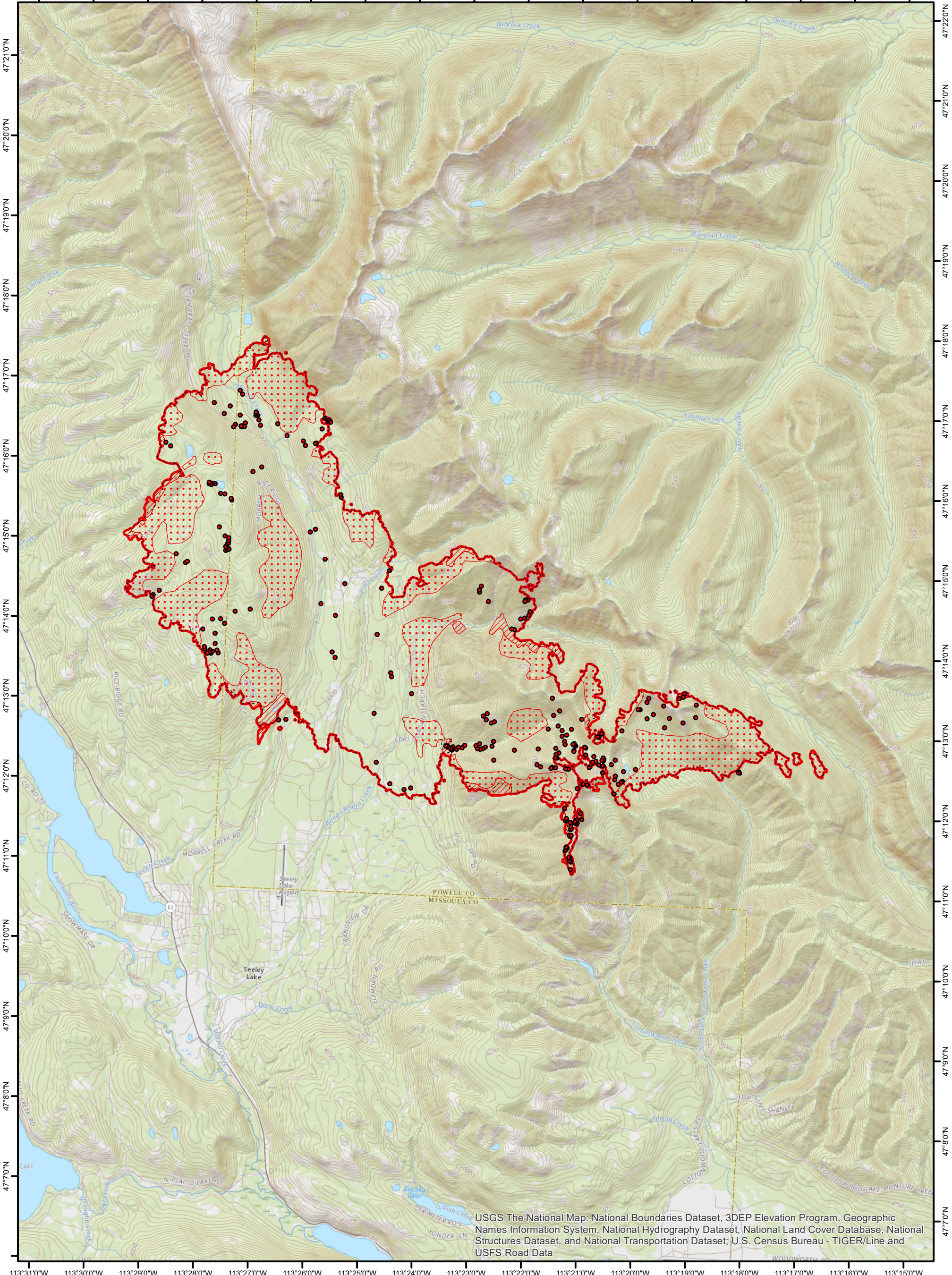


113°32'0"W 113°31'0"W 113°30'0"W 113°29'0"W 113°28'0"W 113°27'0"W 113°26'0"W 113°25'0"W 113°24'0"W 113°23'0"W 113°22'0"W 113°21'0"W 113°20'0"W 113°19'0"W 113°18'0"W 113°17'0"W 113°16'0"W




USGS The National Map: National Boundaries Dataset, 3DEP Elevation Program, Geographic Names Information System, National Hydrography Dataset, National Land Cover Database, National Structures Dataset, and National Transportation Dataset; U.S. Census Bureau - TIGER/Line and USFS Road Data

Legend

- Heat Perimeter
- Intense Heat
- Scattered Heat
- Isolated Heat Sources
- 20170821_2110_Rice Ridge_PreviousPerimeter





INFRARED MAP
 Rice Ridge Fire (MT-LNF-001464)
 Flight: August 21, 2017 @ 2354 MDT
 16,117 IR Acres
 IRIN: Dale Gough