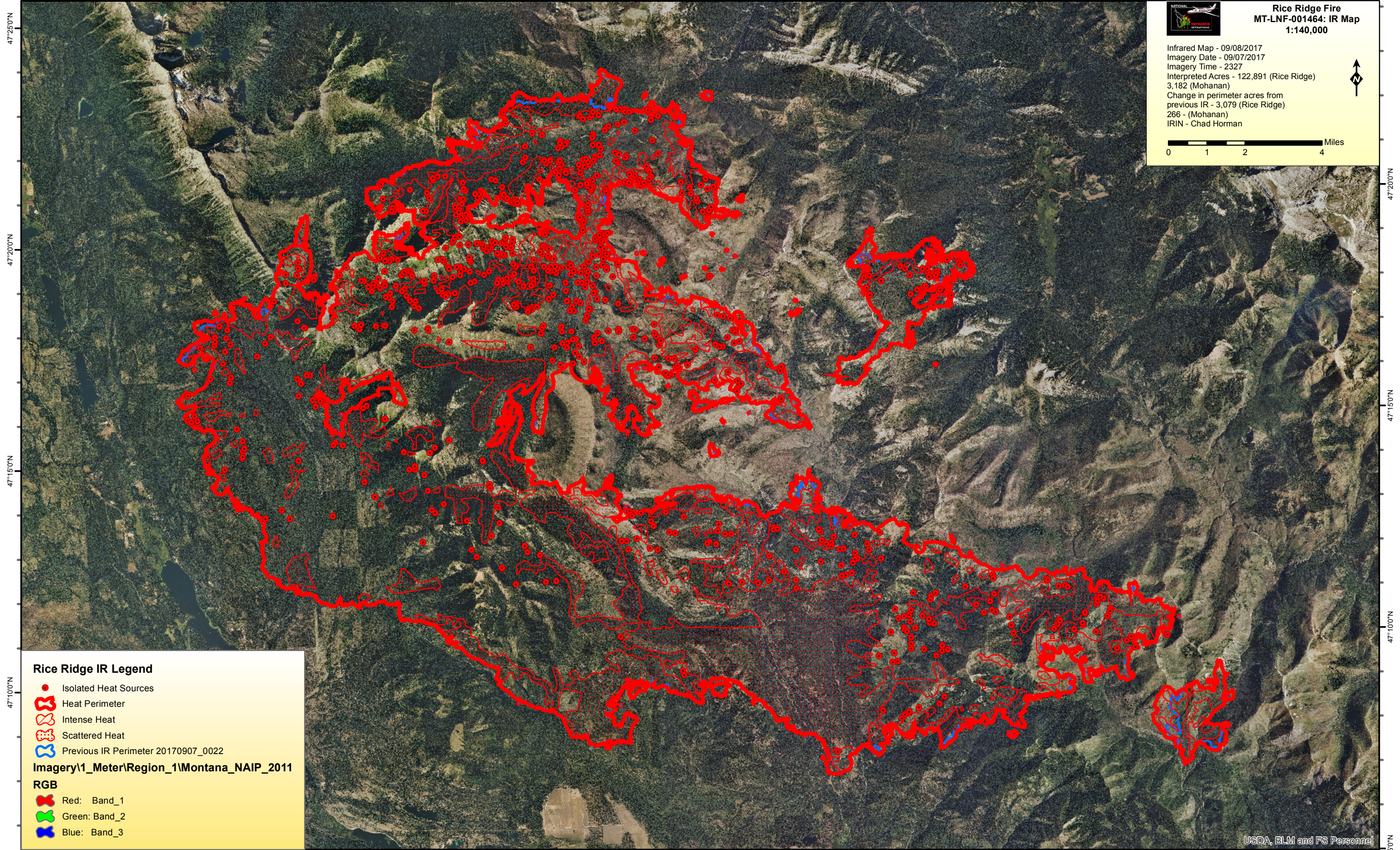


113°35'0"W 113°30'0"W 113°25'0"W 113°20'0"W 113°15'0"W 113°10'0"W 113°5'0"W 113°0'0"W 112°55'0"W



**Rice Ridge Fire**  
**MT-LNF-001464: IR Map**  
**1:140,000**

Infrared Map - 09/08/2017  
 Imagery Date - 09/07/2017  
 Imagery Time - 2327  
 Interpreted Acres - 122,891 (Rice Ridge)  
 3,182 (Mohanan)  
 Change in perimeter acres from  
 previous IR - 3,079 (Rice Ridge)  
 266 - (Mohanan)  
 IRIN - Chad Horman

0 1 2 4 Miles

**Rice Ridge IR Legend**

- Isolated Heat Sources
- Heat Perimeter
- Intense Heat
- Scattered Heat
- Previous IR Perimeter 20170907\_0022

**Imagery\1\_Meter\Region\_1\Montana\_NAIP\_2011**

**RGB**

- Red: Band\_1
- Green: Band\_2
- Blue: Band\_3

113°35'0"W 113°30'0"W 113°25'0"W 113°20'0"W 113°15'0"W 113°10'0"W 113°5'0"W 113°0'0"W 112°55'0"W

47°25'0"N  
47°20'0"N  
47°15'0"N  
47°10'0"N

47°25'0"N  
47°20'0"N  
47°15'0"N  
47°10'0"N