
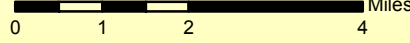
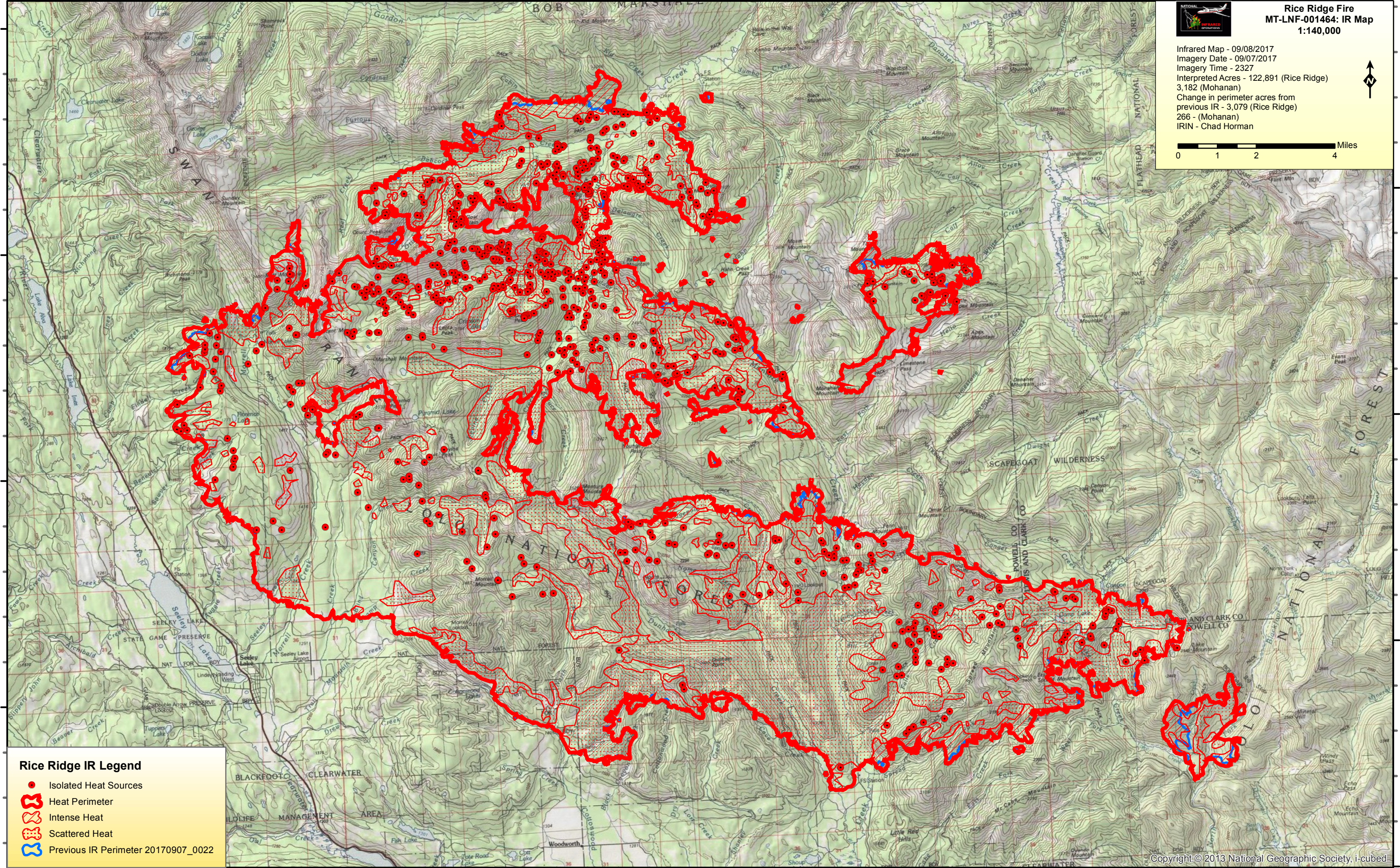


113°35'0"W 113°30'0"W 113°25'0"W 113°20'0"W 113°15'0"W 113°10'0"W 113°5'0"W 113°0'0"W 112°55'0"W






47°25'0"N
47°20'0"N
47°15'0"N
47°10'0"N
47°5'0"N

Rice Ridge Fire
MT-LNF-001464: IR Map
1:140,000

Infrared Map - 09/08/2017
 Imagery Date - 09/07/2017
 Imagery Time - 2327
 Interpreted Acres - 122,891 (Rice Ridge)
 3,182 (Mohanani)
 Change in perimeter acres from
 previous IR - 3,079 (Rice Ridge)
 266 - (Mohanani)
 IRIN - Chad Horman

Rice Ridge IR Legend

-  Isolated Heat Sources
-  Heat Perimeter
-  Intense Heat
-  Scattered Heat
-  Previous IR Perimeter 20170907_0022

113°35'0"W 113°30'0"W 113°25'0"W 113°20'0"W 113°15'0"W 113°10'0"W 113°5'0"W 113°0'0"W 112°55'0"W