

113°39'0"W 113°37'0"W 113°35'0"W 113°33'0"W 113°31'0"W 113°29'0"W 113°27'0"W 113°25'0"W 113°23'0"W 113°21'0"W 113°19'0"W 113°17'0"W 113°15'0"W 113°13'0"W 113°11'0"W 113°9'0"W 113°7'0"W 113°5'0"W 113°3'0"W 113°1'0"W 112°59'0"W 112°57'0"W 112°55'0"W 112°53'0"W 112°51'0"W 112°49'0"W

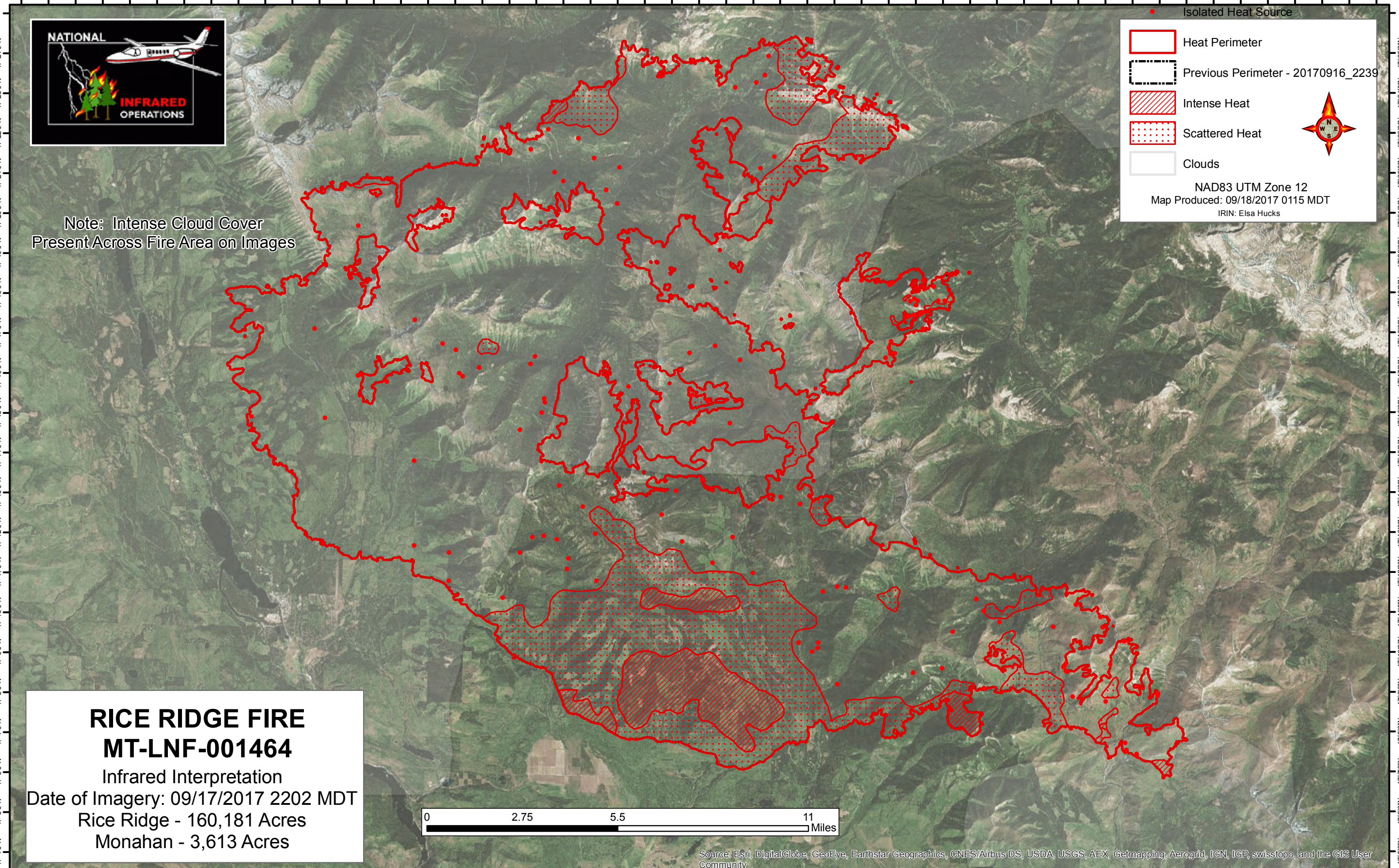


Note: Intense Cloud Cover Present Across Fire Area on Images

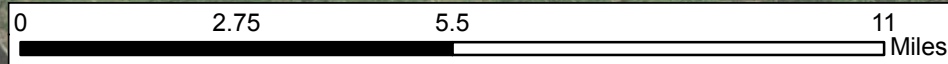
Isolated Heat Source

- Heat Perimeter
- Previous Perimeter - 20170916_2239
- Intense Heat
- Scattered Heat
- Clouds

NAD83 UTM Zone 12
Map Produced: 09/18/2017 0115 MDT
IRIN: Elsa Hucks



RICE RIDGE FIRE
MT-LNF-001464
 Infrared Interpretation
 Date of Imagery: 09/17/2017 2202 MDT
 Rice Ridge - 160,181 Acres
 Monahan - 3,613 Acres



Source: Esri, DigitalGlobe, GeoEye, Earthstar Geographics, CNES/Airbus DS, USDA, USGS, AEX, Getmapping, Aerogrid, IGN, IGP, swisstopo, and the GIS User Community

113°37'0"W 113°35'0"W 113°33'0"W 113°31'0"W 113°29'0"W 113°27'0"W 113°25'0"W 113°23'0"W 113°21'0"W 113°19'0"W 113°17'0"W 113°15'0"W 113°13'0"W 113°11'0"W 113°9'0"W 113°7'0"W 113°5'0"W 113°3'0"W 113°1'0"W 112°59'0"W 112°57'0"W 112°55'0"W 112°53'0"W 112°51'0"W 112°49'0"W