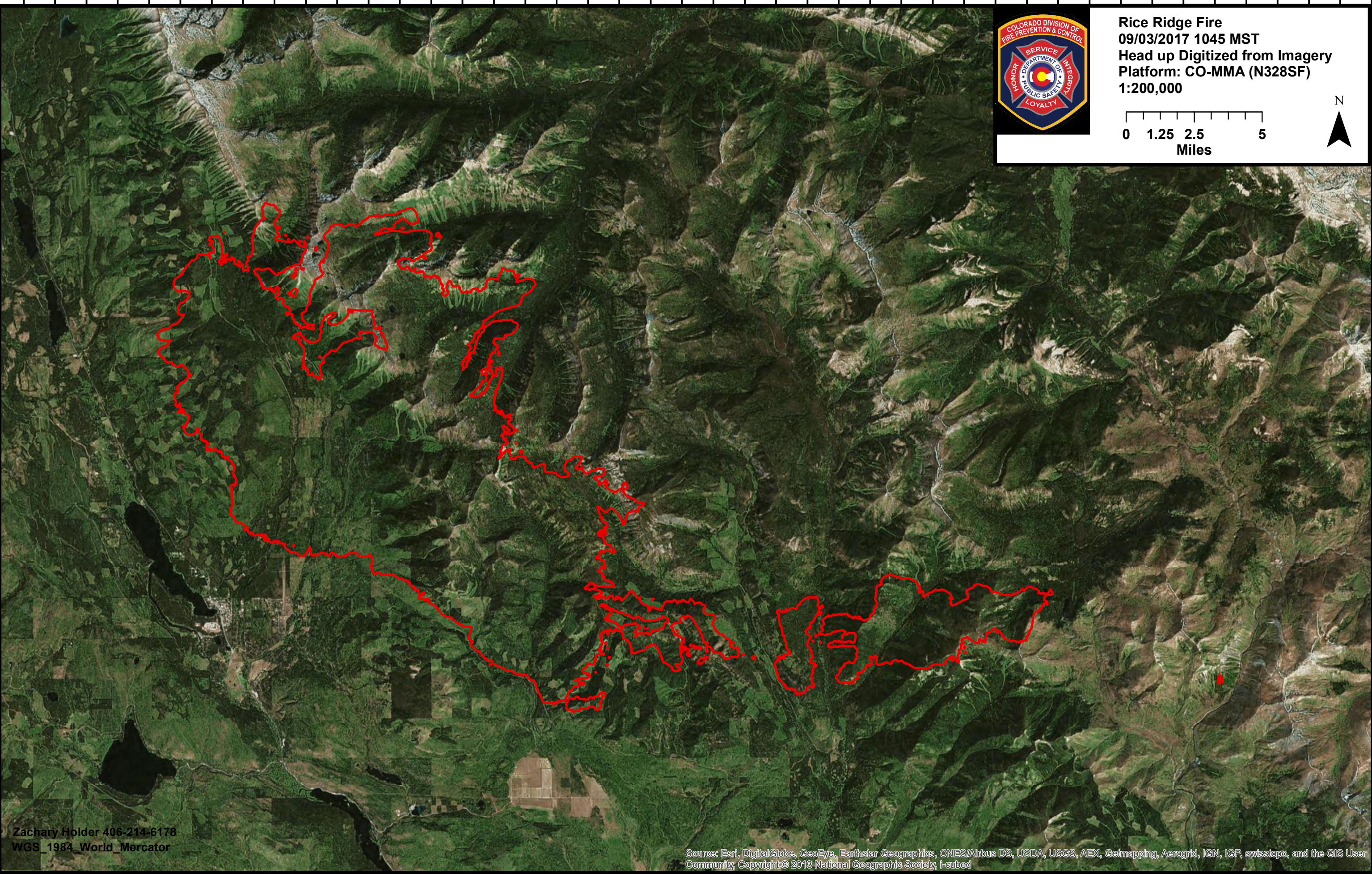
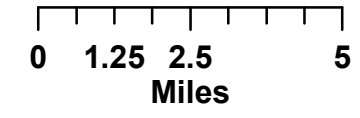


113°34'0"W 113°32'0"W 113°30'0"W 113°28'0"W 113°26'0"W 113°24'0"W 113°22'0"W 113°20'0"W 113°18'0"W 113°16'0"W 113°14'0"W 113°12'0"W 113°10'0"W 113°8'0"W 113°6'0"W 113°4'0"W 113°2'0"W 113°0'0"W 112°58'0"W 112°56'0"W 112°54'0"W 112°52'0"W

47°23'0"N
47°21'0"N
47°19'0"N
47°17'0"N
47°15'0"N
47°13'0"N
47°11'0"N
47°9'0"N
47°8'0"N
47°7'0"N
47°6'0"N



Rice Ridge Fire
09/03/2017 1045 MST
Head up Digitized from Imagery
Platform: CO-MMA (N328SF)
1:200,000



47°23'0"N
47°21'0"N
47°19'0"N
47°17'0"N
47°15'0"N
47°13'0"N
47°11'0"N
47°9'0"N
47°8'0"N
47°7'0"N
47°6'0"N

Zachary Holder 406-214-6178
WGS_1984_World_Mercator

Source: Esri, DigitalGlobe, GeoEye, Earthstar Geographics, CNES/Airbus DS, USDA, USGS, AEX, Getmapping, Aerogrid, IGN, IGP, swisstopo, and the GIS User Community, Copyright © 2013 National Geographic Society, I-cubed

113°34'0"W 113°32'0"W 113°30'0"W 113°28'0"W 113°26'0"W 113°24'0"W 113°22'0"W 113°20'0"W 113°18'0"W 113°16'0"W 113°14'0"W 113°12'0"W 113°10'0"W 113°8'0"W 113°6'0"W 113°4'0"W 113°2'0"W 113°0'0"W 112°58'0"W 112°56'0"W 112°54'0"W 112°52'0"W