

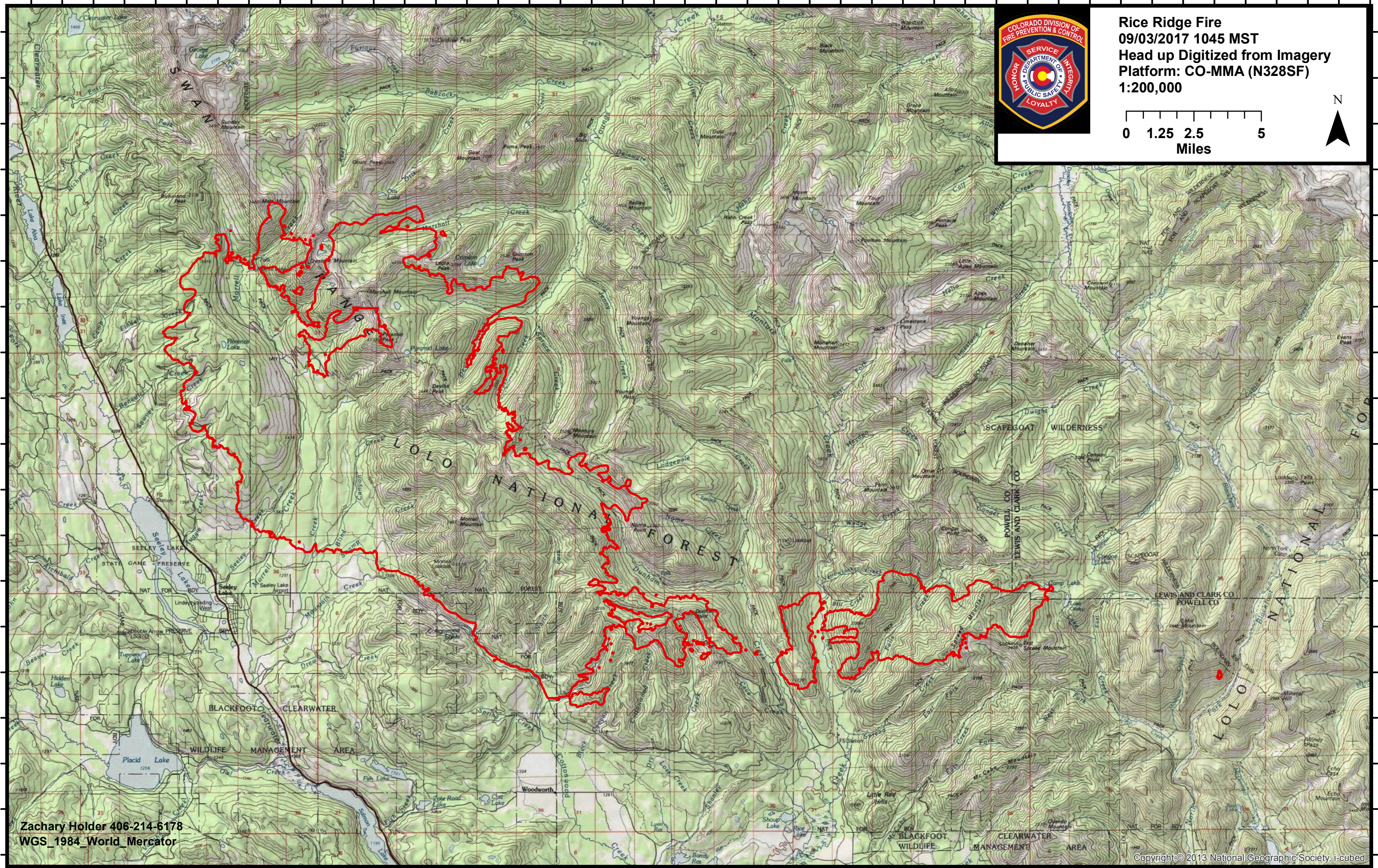
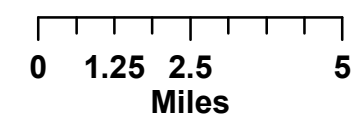
113°34'0"W 113°32'0"W 113°30'0"W 113°28'0"W 113°26'0"W 113°24'0"W 113°22'0"W 113°20'0"W 113°18'0"W 113°16'0"W 113°14'0"W 113°12'0"W 113°10'0"W 113°8'0"W 113°6'0"W 113°4'0"W 113°2'0"W 113°0'0"W 112°58'0"W 112°56'0"W 112°54'0"W 112°52'0"W

47°23'0"N  
47°21'0"N  
47°19'0"N  
47°17'0"N  
47°15'0"N  
47°13'0"N  
47°11'0"N  
47°9'0"N  
47°8'0"N  
47°7'0"N  
47°6'0"N  
47°5'0"N

47°23'0"N  
47°21'0"N  
47°19'0"N  
47°17'0"N  
47°15'0"N  
47°13'0"N  
47°11'0"N  
47°9'0"N  
47°8'0"N  
47°7'0"N  
47°6'0"N  
47°5'0"N



**Rice Ridge Fire**  
09/03/2017 1045 MST  
Head up Digitized from Imagery  
Platform: CO-MMA (N328SF)  
1:200,000



Zachary Holder 406-214-6178  
WGS\_1984\_World\_Mercator

Copyright © 2013 National Geographic Society, i-cubed

113°34'0"W 113°32'0"W 113°30'0"W 113°28'0"W 113°26'0"W 113°24'0"W 113°22'0"W 113°20'0"W 113°18'0"W 113°16'0"W 113°14'0"W 113°12'0"W 113°10'0"W 113°8'0"W 113°6'0"W 113°4'0"W 113°2'0"W 113°0'0"W 112°58'0"W 112°56'0"W 112°54'0"W 112°52'0"W