
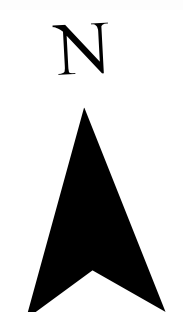





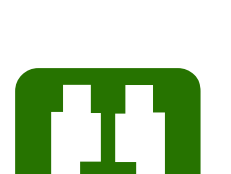

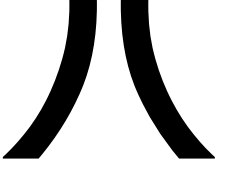
113°35'0"W 113°34'0"W 113°33'0"W 113°32'0"W 113°31'0"W 113°30'0"W 113°29'0"W 113°28'0"W 113°27'0"W 113°26'0"W 113°25'0"W 113°24'0"W 113°23'0"W 113°22'0"W

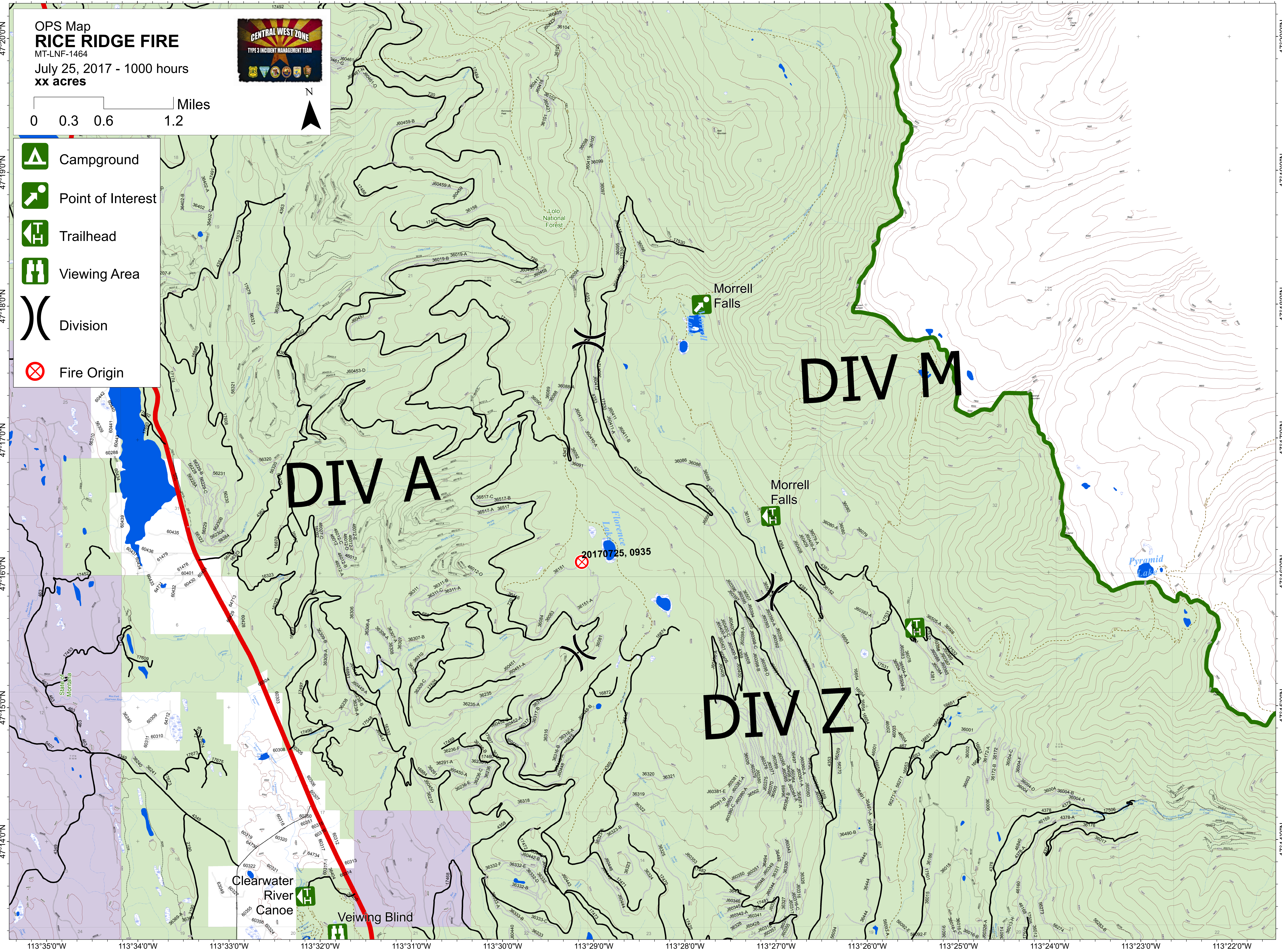
OPS Map
RICE RIDGE FIRE
 MT-LNF-1464
 July 25, 2017 - 1000 hours
 xx acres



Miles
 0 0.3 0.6 1.2



-  Campground
-  Point of Interest
-  Trailhead
-  Viewing Area
-  Division
-  Fire Origin



113°35'0"W 113°34'0"W 113°33'0"W 113°32'0"W 113°31'0"W 113°30'0"W 113°29'0"W 113°28'0"W 113°27'0"W 113°26'0"W 113°25'0"W 113°24'0"W 113°23'0"W 113°22'0"W