

113°34'0"W 113°33'0"W 113°32'0"W 113°31'0"W 113°30'0"W 113°29'0"W 113°28'0"W 113°27'0"W 113°26'0"W 113°25'0"W

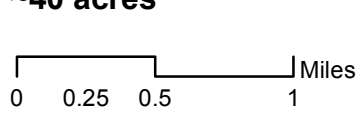
47°19'0"N 47°18'0"N 47°17'0"N 47°16'0"N 47°15'0"N 47°14'0"N 47°13'0"N 47°12'0"N 47°11'0"N

47°19'0"N 47°18'0"N 47°17'0"N 47°16'0"N 47°15'0"N 47°14'0"N 47°13'0"N 47°12'0"N 47°11'0"N

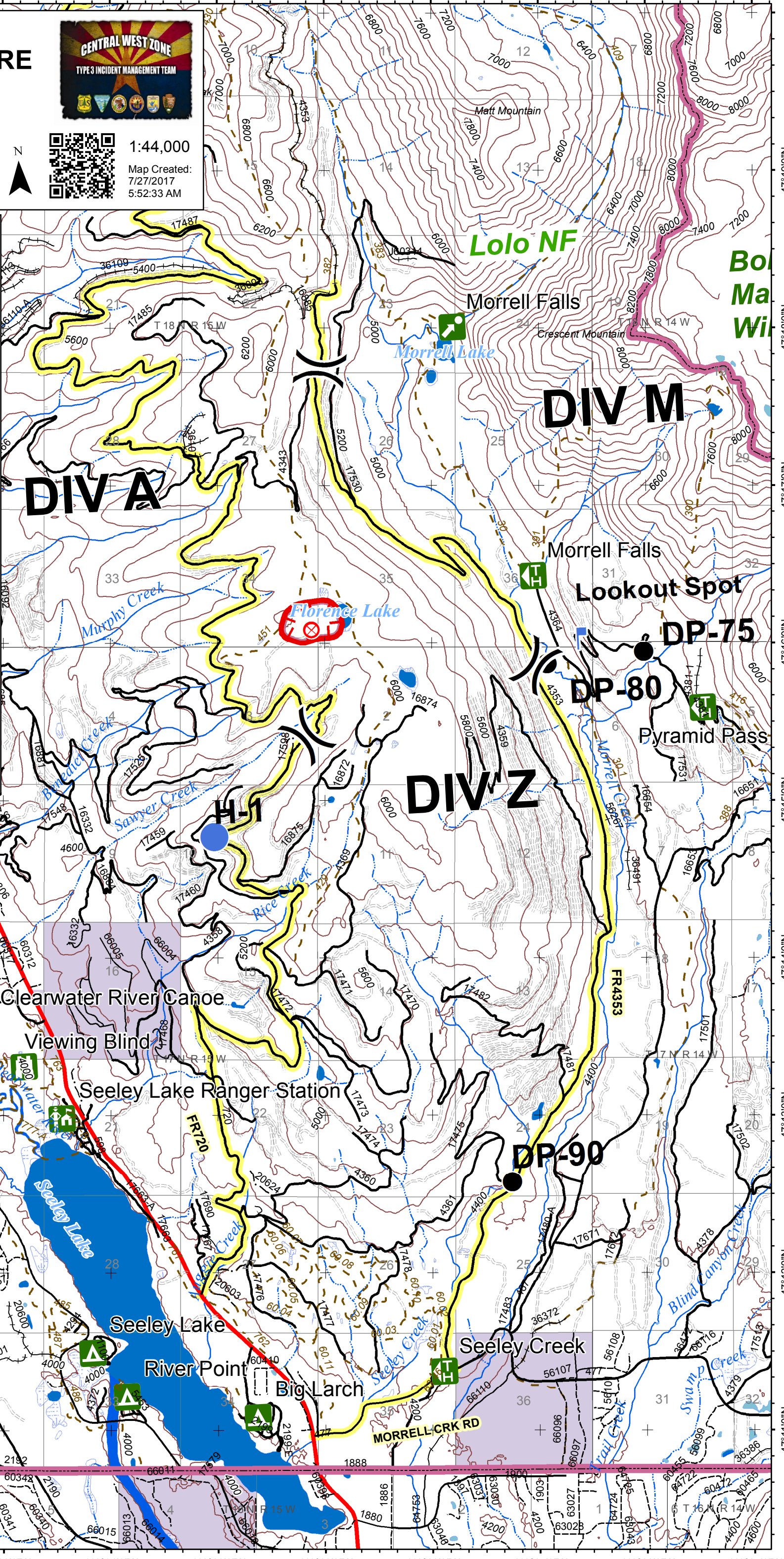
IAP Map RICE RIDGE FIRE MT-LNF-1464 July 27, 2017 ~40 acres



1:44,000
Map Created:
7/27/2017
5:52:33 AM



- Drop Point
- Fire Origin
- Helispot
- Lookout
- Division
- Uncontrolled Fire Edge
- Ranger Station
- Campground
- Point of Interest
- Trailhead
- Viewing Area
- Trail Data
- 200' Contour
- Best Access Route



113°34'0"W 113°33'0"W 113°32'0"W 113°31'0"W 113°30'0"W 113°29'0"W 113°28'0"W 113°27'0"W 113°26'0"W 113°25'0"W