

113°33'0"W 113°32'0"W 113°31'0"W 113°30'0"W 113°29'0"W 113°28'0"W 113°27'0"W 113°26'0"W 113°25'0"W

47°20'0"N 47°19'0"N 47°18'0"N 47°17'0"N 47°16'0"N 47°15'0"N 47°14'0"N 47°13'0"N 47°12'0"N 47°11'0"N

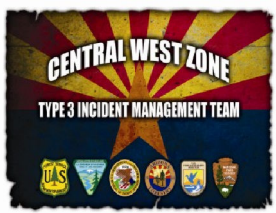
# IAP Map

## RICE RIDGE FIRE

MT-LNF-1464

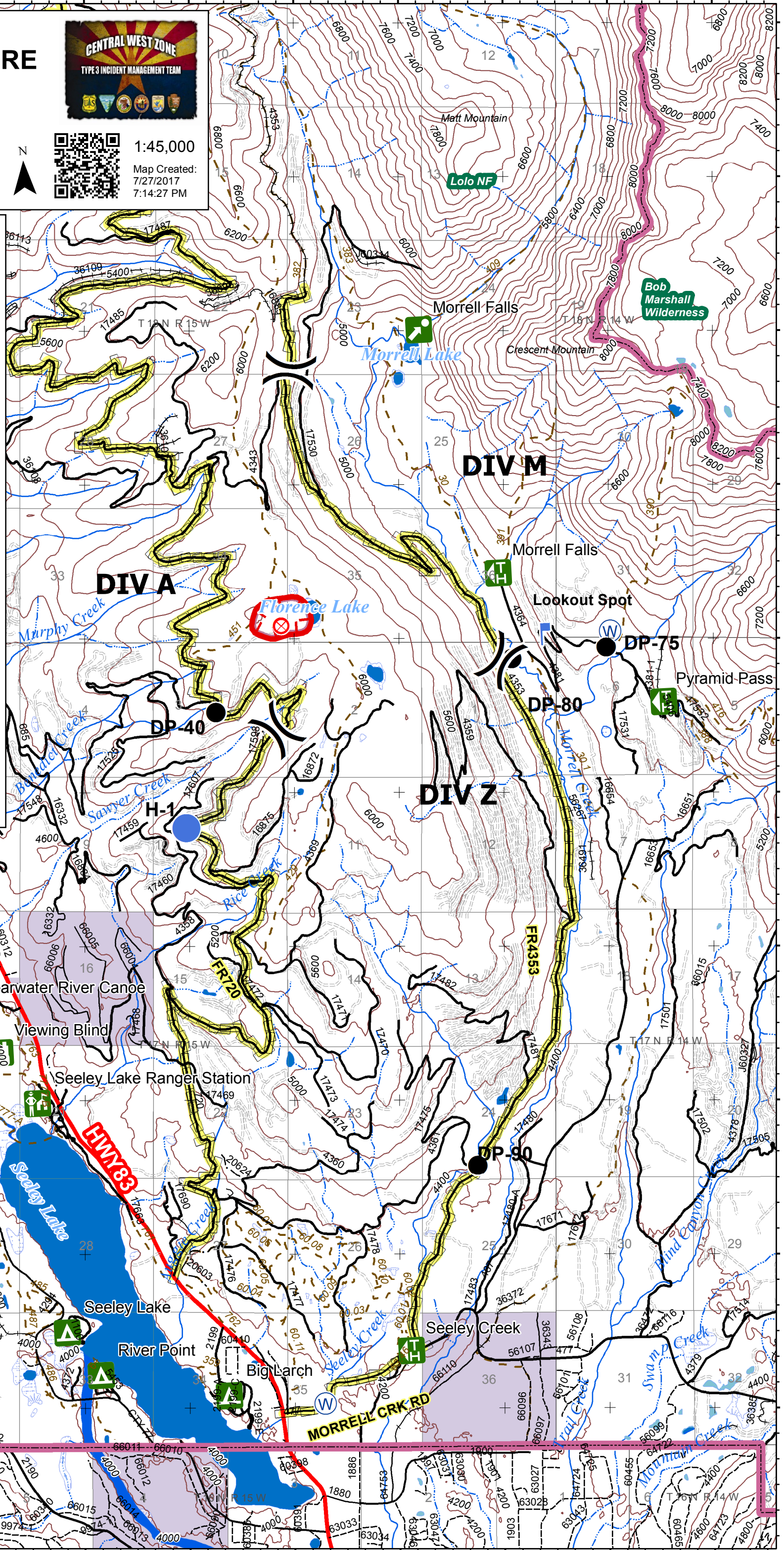
### July 28, 2017

~60 acres



1:45,000  
Map Created: 7/27/2017 7:14:27 PM

- Division
- Fire Origin
- Drop Point
- Helispot
- Lookout
- Water Source
- Uncontrolled Fire Edge
- Ranger Station
- Campground
- Point of Interest
- Trailhead
- Viewing Area
- Best Access
- Trail Data
- 200' Contour



113°33'0"W 113°32'0"W 113°31'0"W 113°30'0"W 113°29'0"W 113°28'0"W 113°27'0"W 113°26'0"W 113°25'0"W