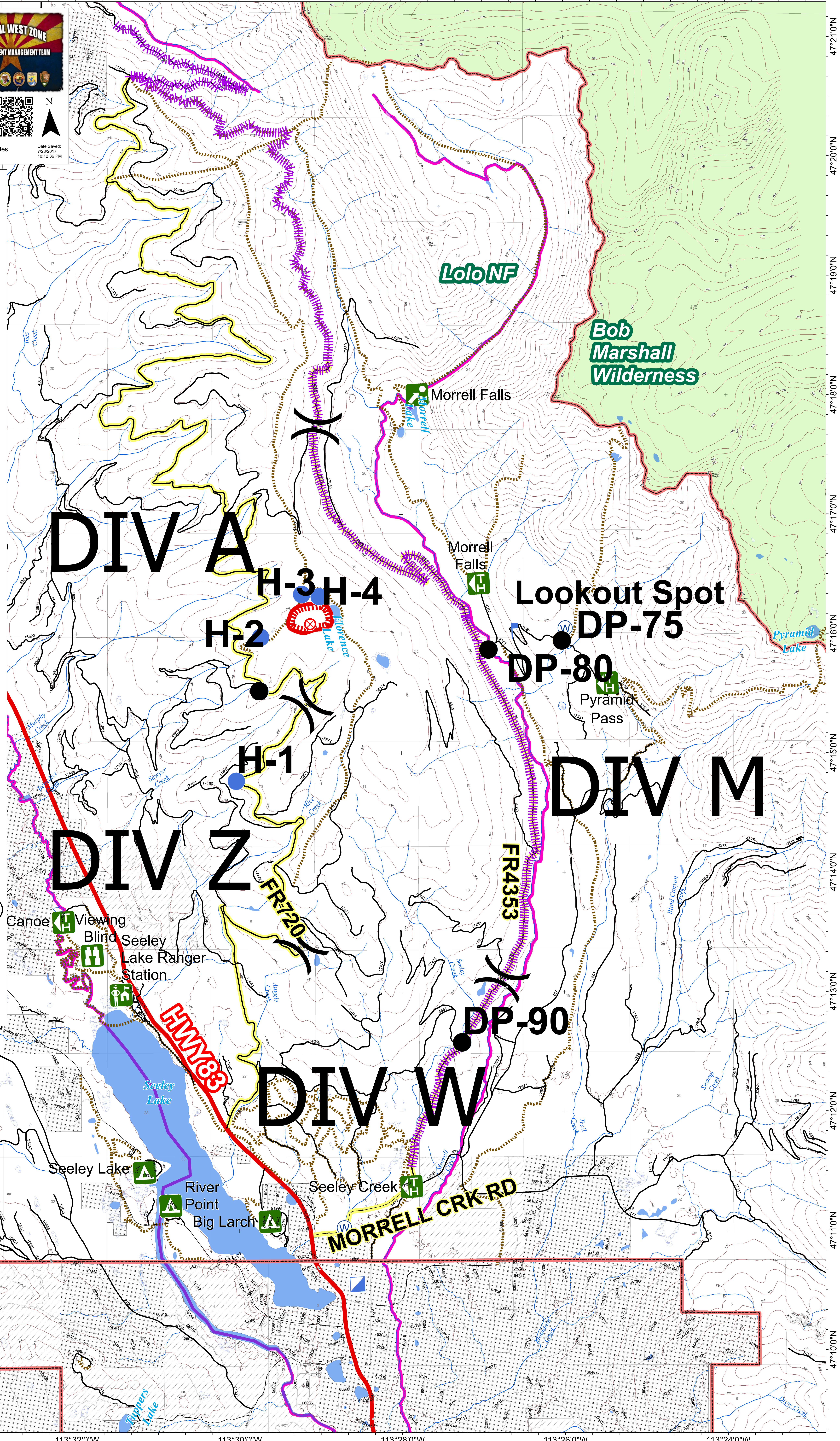


113°34'0"W 113°32'0"W 113°30'0"W 113°28'0"W 113°26'0"W 113°24'0"W

Briefing Map
RICE RIDGE FIRE
MT-LNF-1464
July 29, 2017
~60 ac



- Fire Origin (07/24/2017)
- Drop Point
- Helispot
- Incident Command Post
- Lookout
- Water Source
- Uncontrolled Fire Edge
- Division
- Campground
- Point of Interest
- Ranger Station
- Trailhead
- Viewing Area
- Administrative Boundary
- Great Divide Trail
- Best Access Route
- Trail Data
- Bull Trout Streams (2010)
- Wilderness Area
- Ownership**
- Private
- State of Montana



113°34'0"W 113°32'0"W 113°30'0"W 113°28'0"W 113°26'0"W 113°24'0"W