

113°33'0"W 113°32'0"W 113°31'0"W 113°30'0"W 113°29'0"W 113°28'0"W 113°27'0"W 113°26'0"W 113°25'0"W

47°20'0"N  
47°19'0"N  
47°18'0"N  
47°17'0"N  
47°16'0"N  
47°15'0"N  
47°14'0"N  
47°13'0"N  
47°12'0"N  
47°11'0"N

47°20'0"N  
47°19'0"N  
47°18'0"N  
47°17'0"N  
47°16'0"N  
47°15'0"N  
47°14'0"N  
47°13'0"N  
47°12'0"N  
47°11'0"N

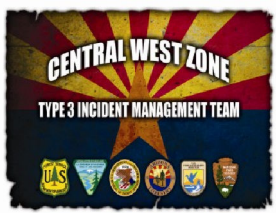
# IAP Map

## RICE RIDGE FIRE

MT-LNF-1464

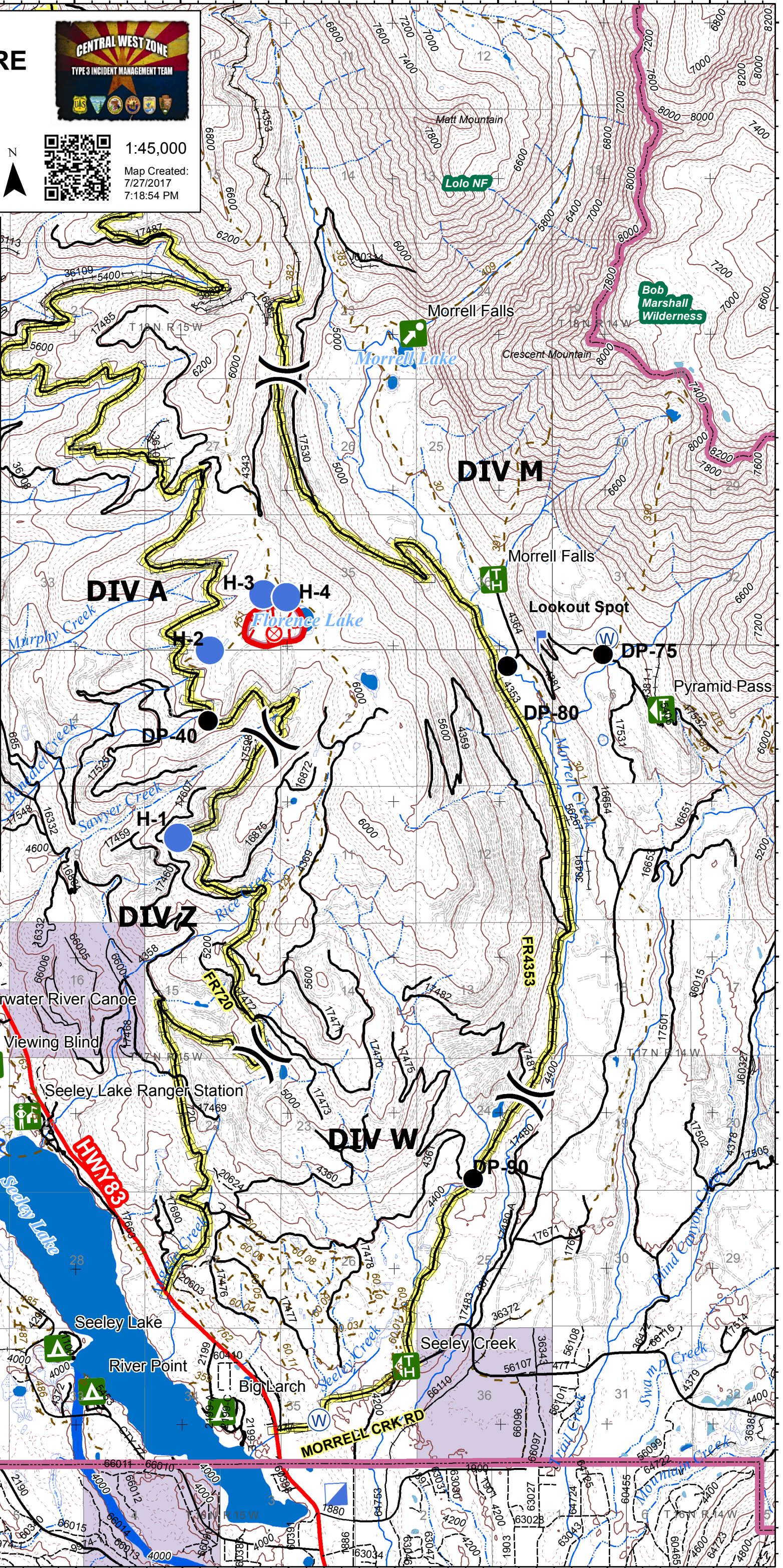
July 29, 2017

~60 acres



1:45,000  
Map Created:  
7/27/2017  
7:18:54 PM

- Fire Origin
- Drop Point
- Helispot
- Incident Command Post
- Lookout
- Water Source
- Division
- Uncontrolled Fire Edge
- Ranger Station
- Campground
- Point of Interest
- Trailhead
- Viewing Area
- BestAccess
- Trail Data
- 200' Contour



113°33'0"W 113°32'0"W 113°31'0"W 113°30'0"W 113°29'0"W 113°28'0"W 113°27'0"W 113°26'0"W 113°25'0"W