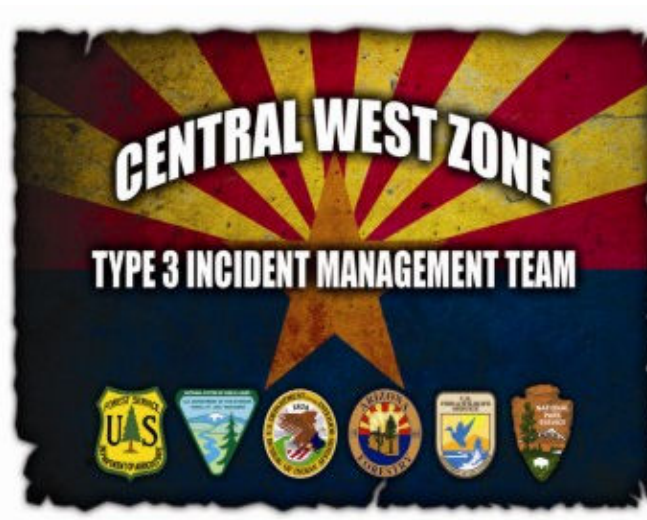


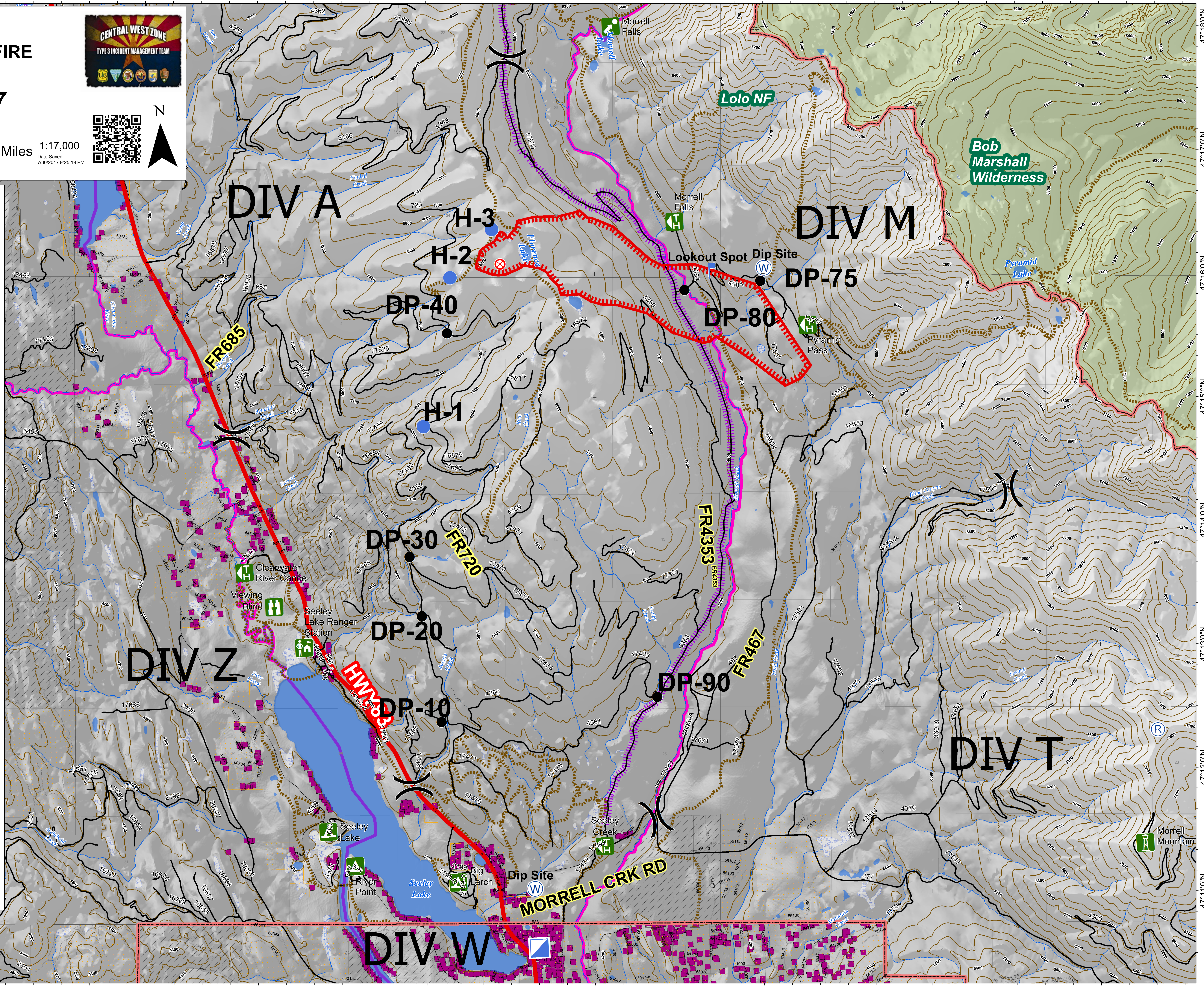
113°36'0"W 113°34'0"W 113°32'0"W 113°30'0"W 113°28'0"W 113°26'0"W 113°24'0"W 113°22'0"W

OPS Map
RICE RIDGE FIRE
 MT-LNF-1464
July 31, 2017
 1132 ac



0 0.25 0.5 1 Miles 1:17,000
 Date Saved: 7/30/2017 9:25:19 PM

- Fire Origin (07/24/2017)
- Drop Point
- Helispot
- Incident Command Post
- Lookout
- Repeater
- Water Source
- Uncontrolled Fire Edge
- Division
- Campground
- Lookout
- Point of Interest
- Ranger Station
- Trailhead
- Viewing Area
- Wilderness Boundary
- Great Divide Trail
- Trail Data
- 200' Contours
- Bull Trout Streams (2010)
- Ownership**
- Private
- State of Montana
- FS Topo Building PT**
- FS Topo Building PT
- Wilderness Area



113°36'0"W 113°34'0"W 113°32'0"W 113°30'0"W 113°28'0"W 113°26'0"W 113°24'0"W 113°22'0"W

47°18'0"N 47°17'0"N 47°16'0"N 47°15'0"N 47°14'0"N 47°13'0"N 47°12'0"N 47°11'0"N