

113°36'0"W 113°35'0"W 113°34'0"W 113°33'0"W 113°32'0"W 113°31'0"W 113°30'0"W 113°29'0"W 113°28'0"W 113°27'0"W 113°26'0"W 113°25'0"W 113°24'0"W 113°23'0"W 113°22'0"W 113°21'0"W 113°20'0"W

IAP Map
RICE RIDGE FIRE
MT-LNF-1464
August 1, 2017
3,988 acres



1:55,000
Map Created:
7/31/2017
9:04:52 PM

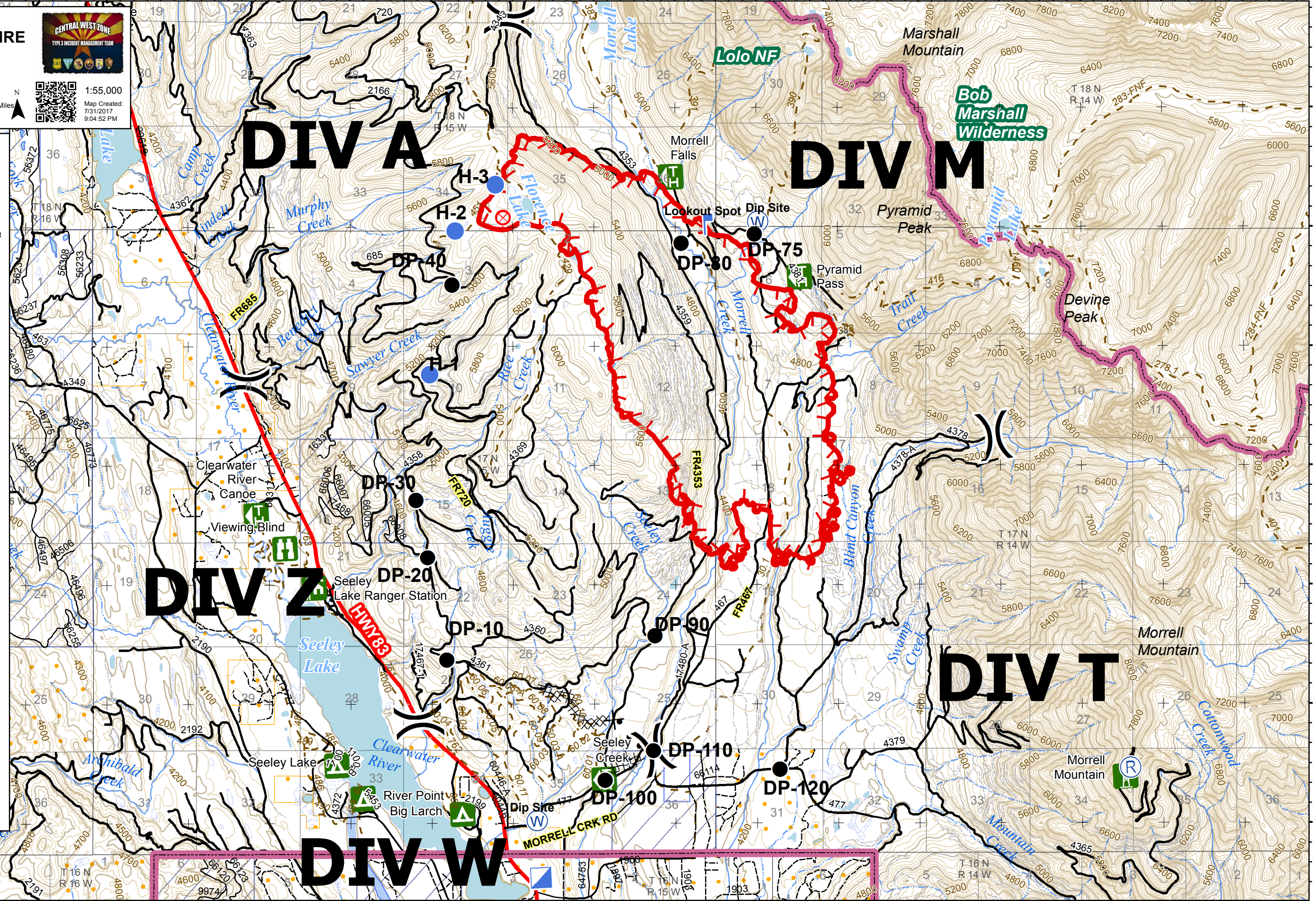


- Fire Origin
- Drop Point
- Helispot
- Incident Command Post
- Lookout
- Repeater
- Water Source
- Division
- Uncontrolled Fire Edge
- Completed Dozer Line
- Proposed Dozer Line
- Ranger Station
- Campground
- Lookout
- Point of Interest
- Trailhead
- Viewing Area
- Best Access
- Trail Data
- Private
- State of Montana

DIV A **DIV M**

DIV Z **DIV T**

DIV W



113°36'0"W 113°35'0"W 113°34'0"W 113°33'0"W 113°32'0"W 113°31'0"W 113°30'0"W 113°29'0"W 113°28'0"W 113°27'0"W 113°26'0"W 113°25'0"W 113°24'0"W 113°23'0"W 113°22'0"W 113°21'0"W 113°20'0"W