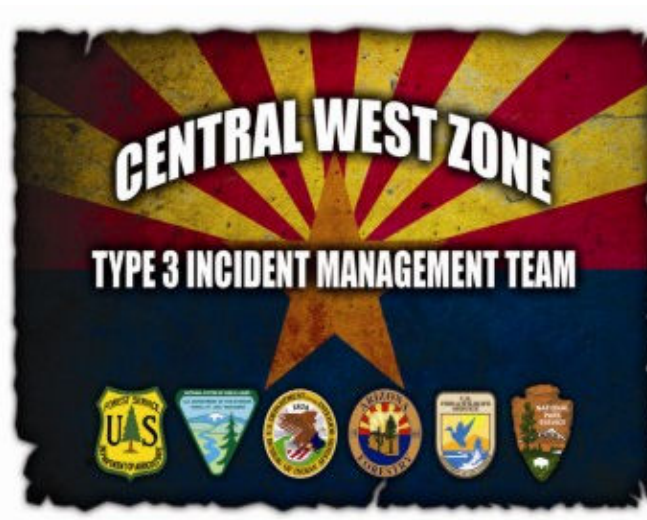
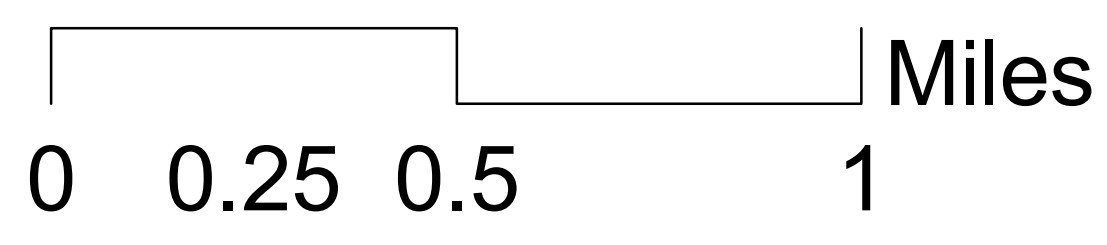
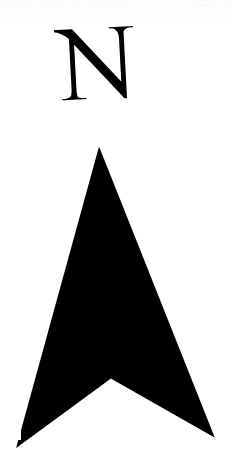


Ops Map
RICE RIDGE FIRE
MT-LNF-1464
August 1, 2017
3,289 Acres

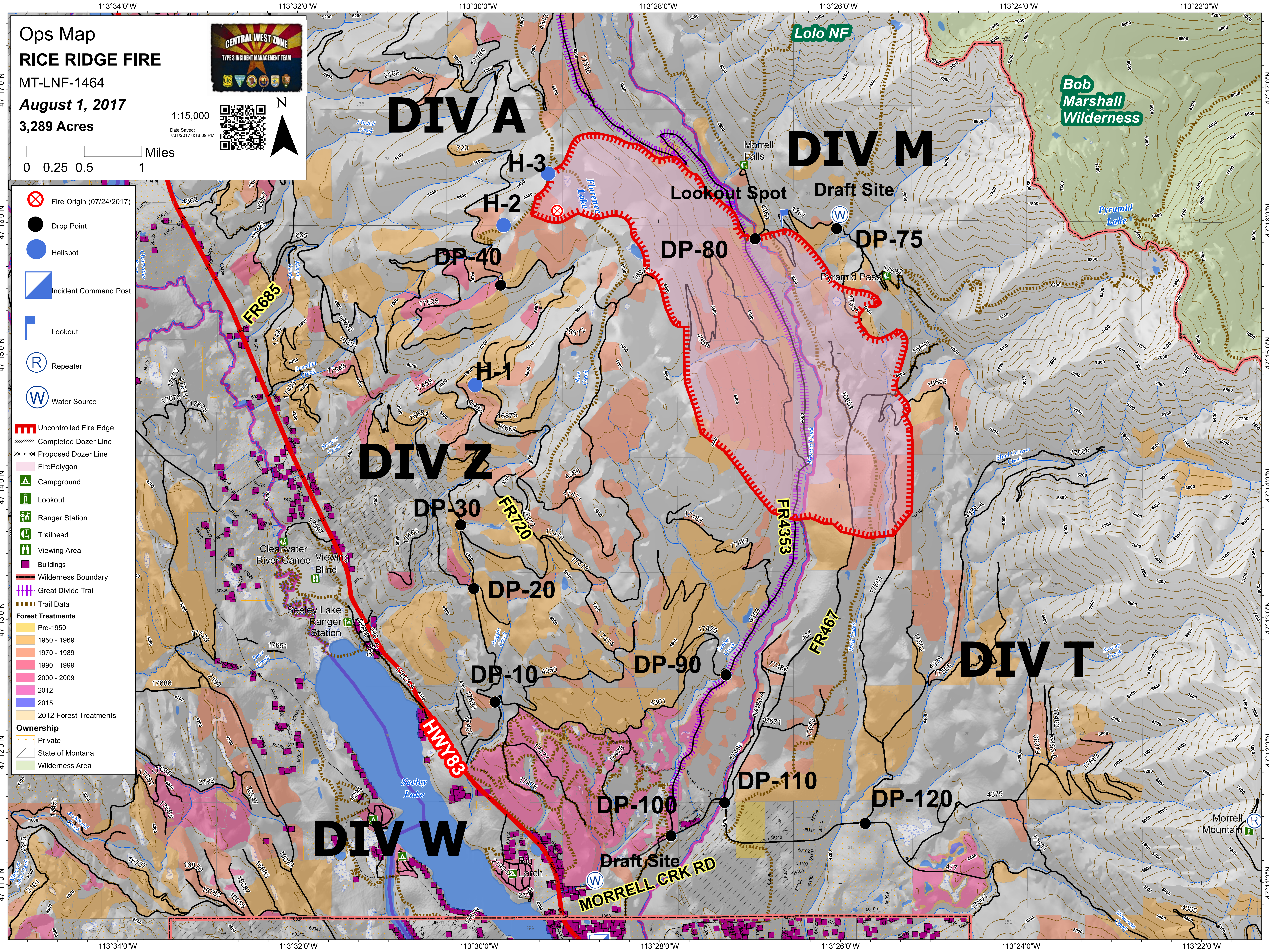


1:15,000
Date Saved:
7/31/2017 8:18:09 PM



- Fire Origin (07/24/2017)
- Drop Point
- Helispot
- Incident Command Post
- Lookout
- Repeater
- Water Source

- Uncontrolled Fire Edge
- Completed Dozer Line
- Proposed Dozer Line
- FirePolygon
- Campground
- Lookout
- Ranger Station
- Trailhead
- Viewing Area
- Buildings
- Wilderness Boundary
- Great Divide Trail
- Trail Data
- Forest Treatments
 - Pre-1950
 - 1950 - 1969
 - 1970 - 1989
 - 1990 - 1999
 - 2000 - 2009
 - 2012
 - 2015
 - 2012 Forest Treatments
- Ownership
 - Private
 - State of Montana
 - Wilderness Area



DIV A

DIV M

DIV Z

DIV T

DIV W

H-3

H-2

H-1

DP-40

DP-80

DP-75

DP-30

DP-20

DP-10

DP-90

DP-110

DP-100

DP-120

MORRELL CRK RD

FR685

FR720

FR4353

FR467

HWY83

Lolo NF

Bob Marshall Wilderness

Lookout Spot

Draft Site

Pyramid Pass

Cleanwater River Canoe Viewing Blind
Seeley Lake Ranger Station

Big Larch

Morrell Mountain