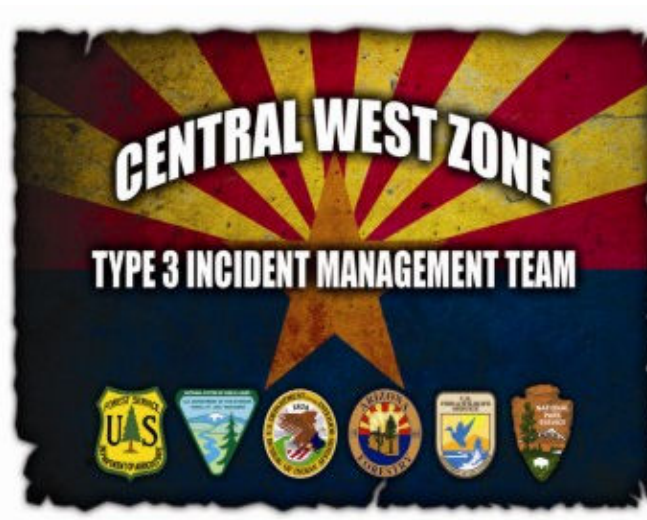
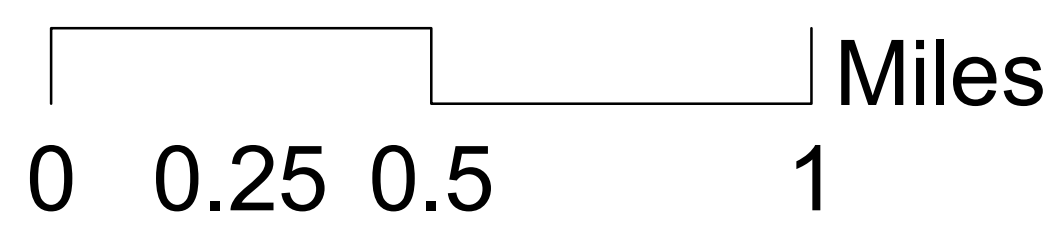
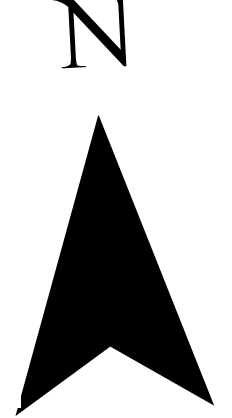


Ops Map  
**RICE RIDGE FIRE**  
 MT-LNF-1464  
**August 1, 2017**  
**3,988 Acres**



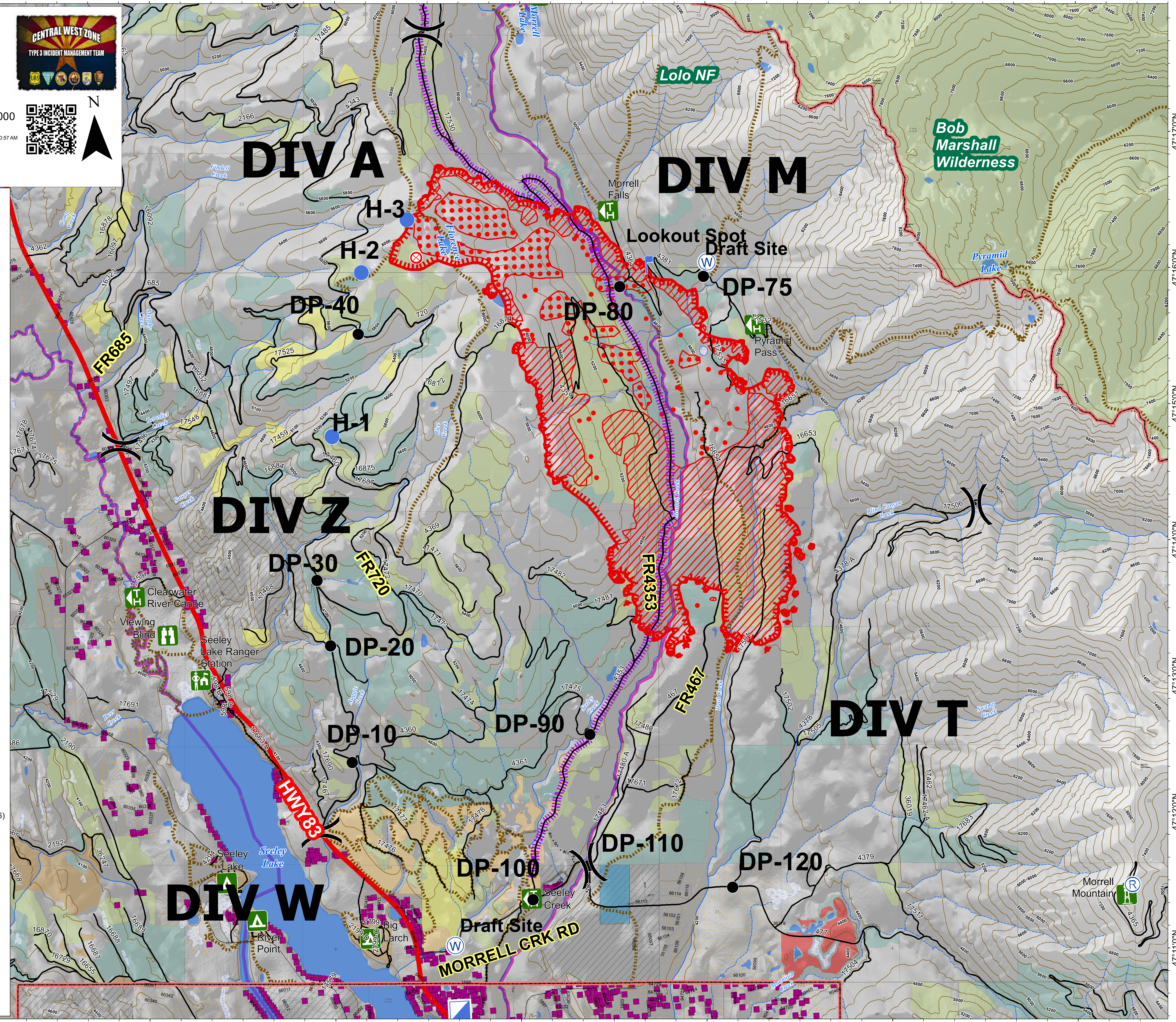
1:16,000  
 Date Saved:  
 8/1/2017 7:10:57 AM



- Fire Origin (07/24/2017)
- Drop Point
- Helispot
- Incident Command Post
- Lookout
- Repeater
- Water Source

- Uncontrolled Fire Edge
- Completed Dozer Line
- Proposed Dozer Line
- Campground
- Lookout
- Point of Interest
- Ranger Station
- Trailhead
- Viewing Area

- Wilderness Boundary
- Great Divide Trail
- Trail Data
- Buildings
- IR Isolated Heat Source (August 01, 2017 - 0126)
- IR Scattered Heat (August 01, 2017 - 0126)
- IR Intense Heat (August 01, 2017 - 0126)
- Historic Forest Treatments**
- Pre-1950
- 1950 - 1969
- 1970 - 1989
- 1990 - 1999
- 2000 - 2009
- 2012 Forest Treatments
- Ownership**
- Private
- State of Montana
- Wilderness Area



113°34'0"W 113°32'0"W 113°30'0"W 113°28'0"W 113°26'0"W 113°24'0"W 113°22'0"W

47°17'0"N  
47°16'0"N  
47°15'0"N  
47°14'0"N  
47°13'0"N  
47°12'0"N  
47°11'0"N

47°17'0"N  
47°16'0"N  
47°15'0"N  
47°14'0"N  
47°13'0"N  
47°12'0"N  
47°11'0"N