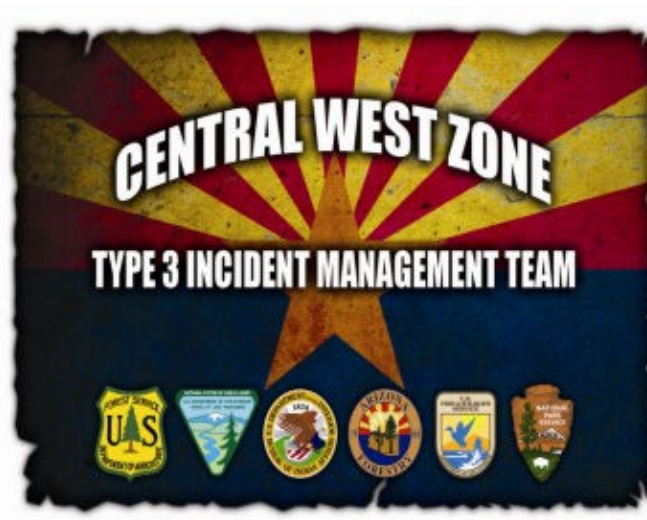


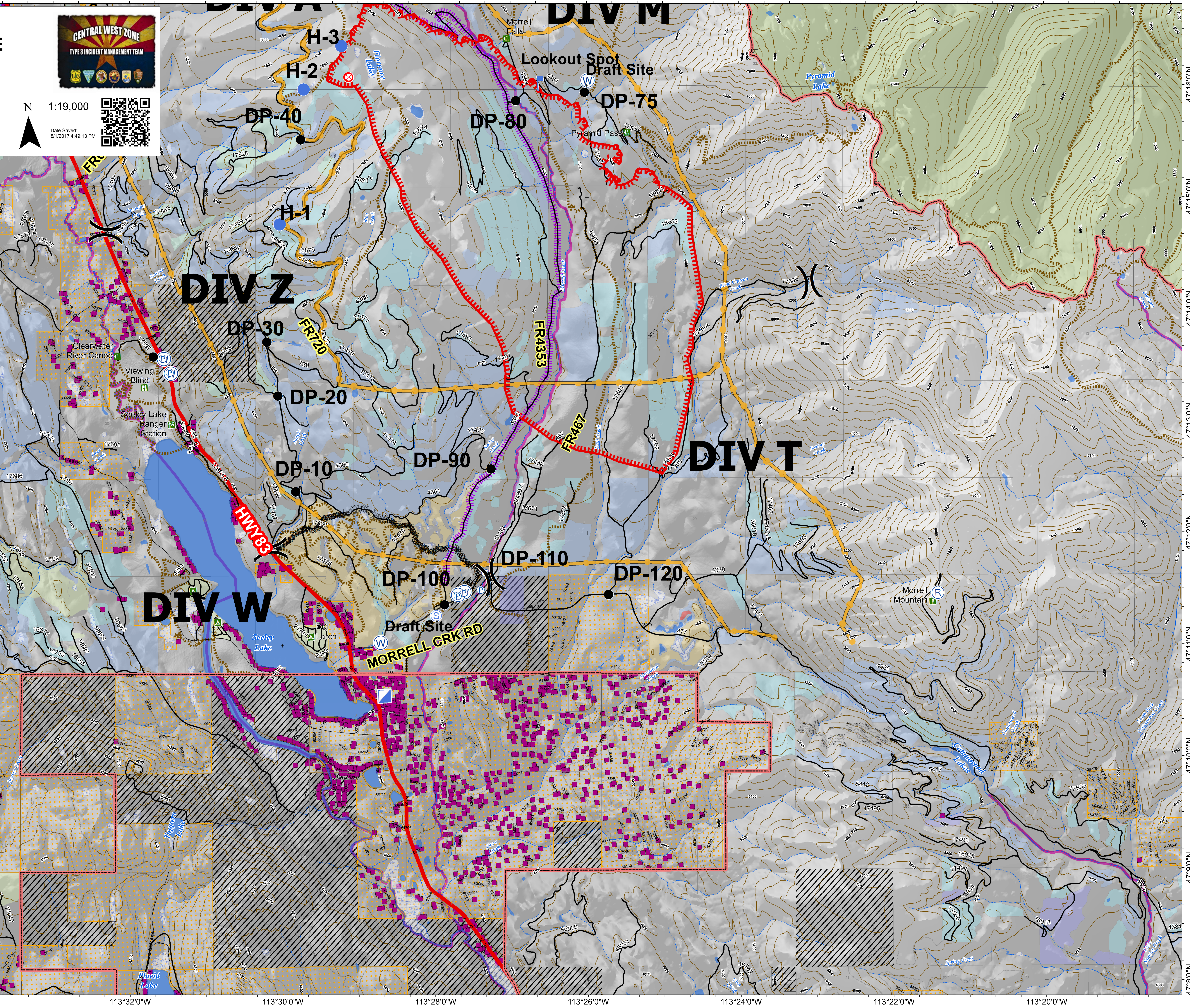
**Ops Map**  
**RICE RIDGE FIRE**  
 MT-LNF-1464  
**August 2, 2017**  
**6,105 Acres**

OPS - digitized - 2100  
 Miles  
 0 0.250.5 1



N 1:19,000  
 Date Saved: 8/1/2017 4:49:13 PM

- Fire Origin (07/24/2017)
- Drop Point
- Helispot
- Incident Command Post
- Lookout
- Pump
- Repeater
- Staging Area
- Water Source
- Uncontrolled Fire Edge
- Completed Dozer Line
- Line Break Completed
- Division
- MAP
- Campground
- Lookout
- Ranger Station
- Trailhead
- Viewing Area
- Wilderness Boundary
- Great Divide Trail
- Trail Data
- Buildings
- Forest Treatments**
- Pre-1950
- 1950 - 1969
- 1970 - 1989
- 1990 - 1999
- 2000 - 2009
- 2012
- 2015
- Ownership**
- Private
- State of Montana
- Wilderness Area



47°16'0"N  
47°15'0"N  
47°14'0"N  
47°13'0"N  
47°12'0"N  
47°11'0"N  
47°10'0"N  
47°9'0"N  
47°8'0"N

47°16'0"N  
47°15'0"N  
47°14'0"N  
47°13'0"N  
47°12'0"N  
47°11'0"N  
47°10'0"N  
47°9'0"N  
47°8'0"N

113°34'0"W 113°32'0"W 113°30'0"W 113°28'0"W 113°26'0"W 113°24'0"W 113°22'0"W 113°20'0"W

113°34'0"W 113°32'0"W 113°30'0"W 113°28'0"W 113°26'0"W 113°24'0"W 113°22'0"W 113°20'0"W