

Ops Map
RICE RIDGE FIRE
 MT-LNF-1464
August 3, 2017
6,805 acres

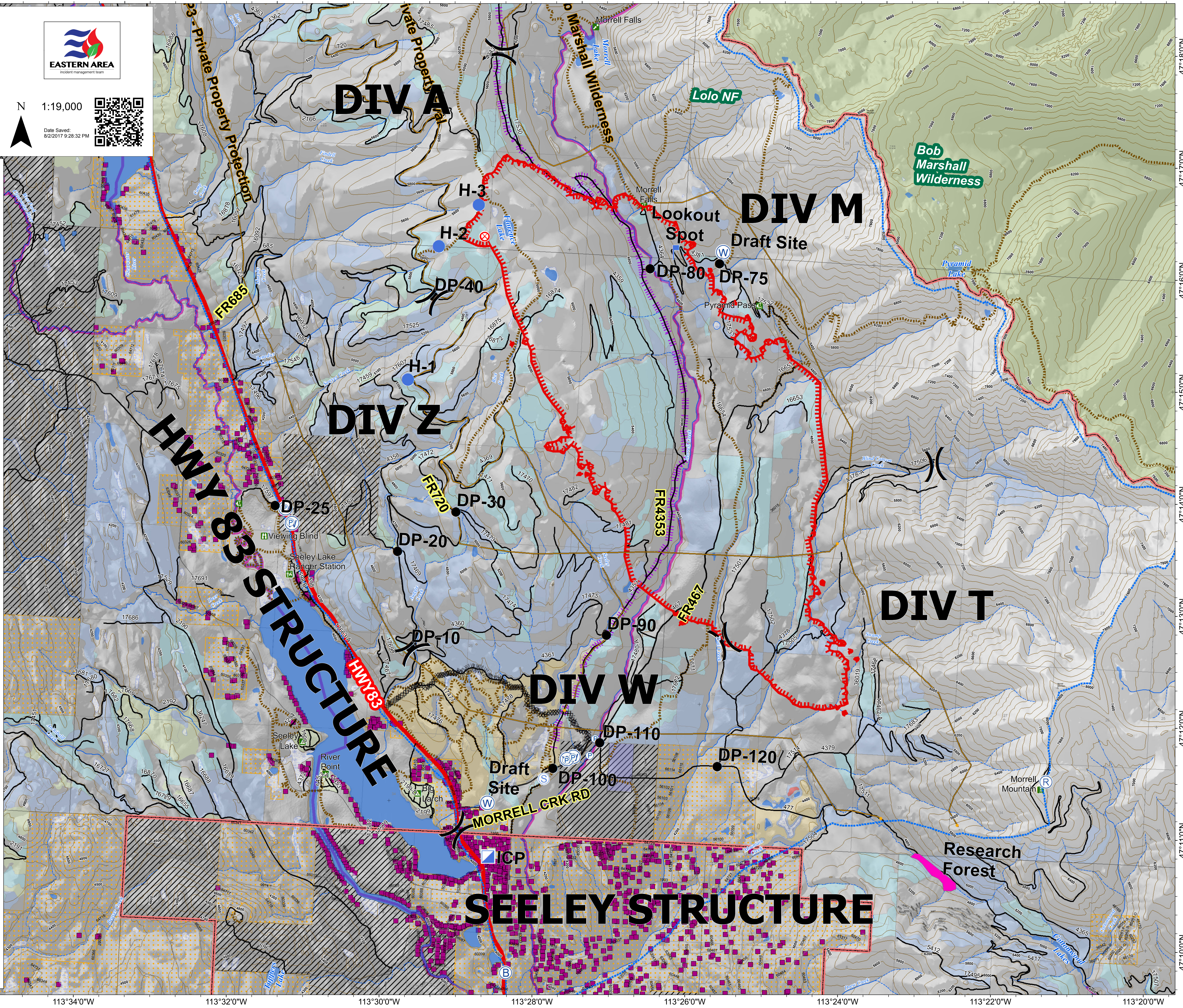


N 1:19,000

Miles

Date Saved: 8/2/2017 9:28:32 PM

- Fire Origin (07/24/2017)
- Drop Point
- Helispot
- Incident Base
- Incident Command Post
- Lookout
- Pump
- Repeater
- Staging Area
- Water Source
- Uncontrolled Fire Edge
- Completed Dozer Line
- Line Break Completed
- Management Action Point
- Maximum Manageable Area
- Division
- Research Forest
- Campground
- Lookout
- Point of Interest
- Ranger Station
- Trailhead
- Viewing Area
- Wilderness Boundary
- Great Divide Trail
- Trail Data
- Buildings
- Forest Treatments**
- Pre-1950
- 1950 - 1969
- 1970 - 1989
- 1990 - 1999
- 2000 - 2009
- 2012
- 2015
- Ownership**
- Private
- State of Montana
- Wilderness Area



47°17'0"N
47°16'0"N
47°15'0"N
47°14'0"N
47°13'0"N
47°12'0"N
47°11'0"N
47°10'0"N

47°18'0"N
47°17'0"N
47°16'0"N
47°15'0"N
47°14'0"N
47°13'0"N
47°12'0"N
47°11'0"N
47°10'0"N

113°36'0"W 113°34'0"W 113°32'0"W 113°30'0"W 113°28'0"W 113°26'0"W 113°24'0"W 113°22'0"W

113°36'0"W 113°34'0"W 113°32'0"W 113°30'0"W 113°28'0"W 113°26'0"W 113°24'0"W 113°22'0"W