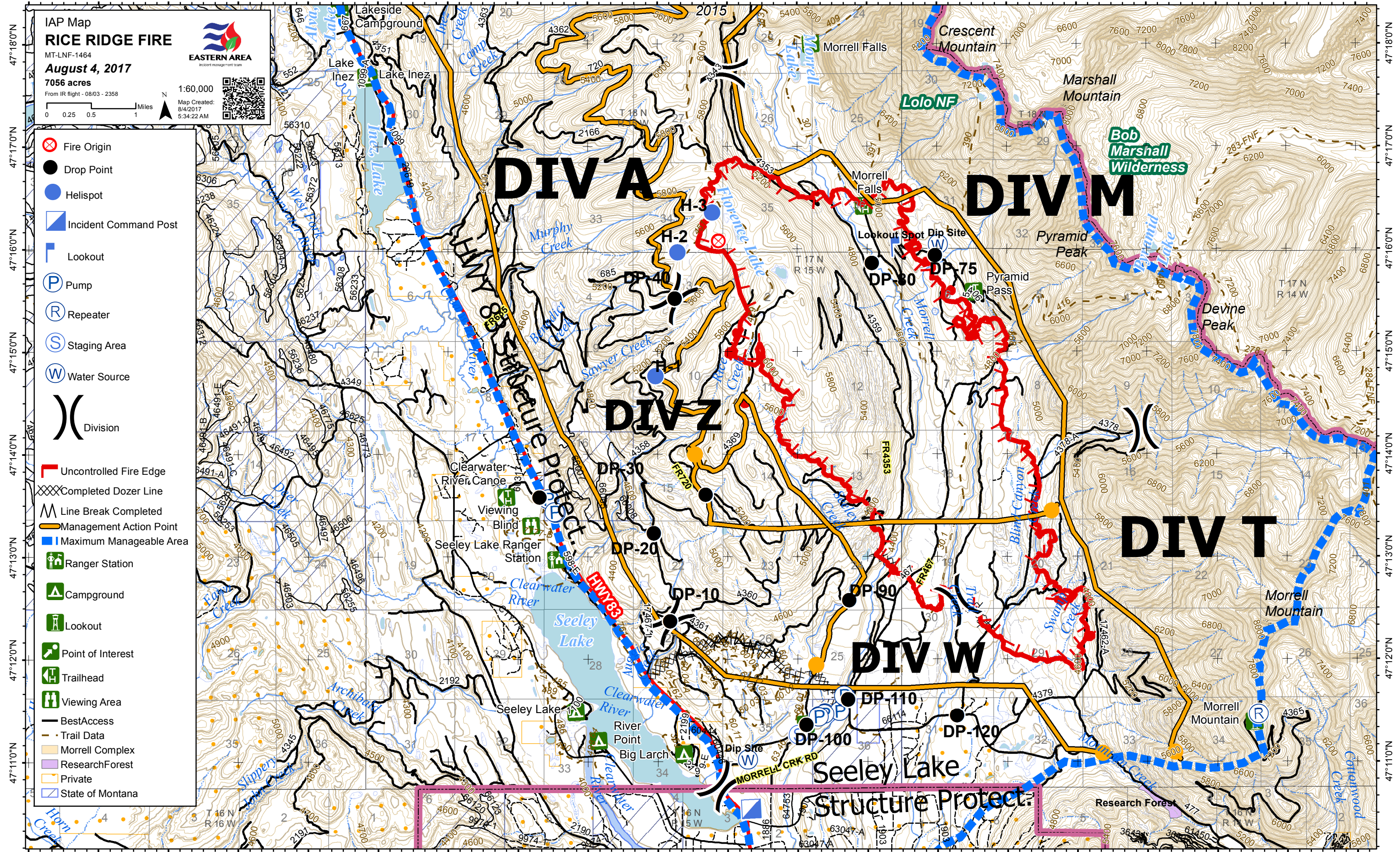


113°39'0"W 113°38'0"W 113°37'0"W 113°36'0"W 113°35'0"W 113°34'0"W 113°33'0"W 113°32'0"W 113°31'0"W 113°30'0"W 113°29'0"W 113°28'0"W 113°27'0"W 113°26'0"W 113°25'0"W 113°24'0"W 113°23'0"W 113°22'0"W 113°21'0"W 113°20'0"W



IAP Map
RICE RIDGE FIRE
 MT-LNF-1464
August 4, 2017
 7056 acres
 From IR flight - 08/03 - 2358

EASTERN AREA
 Incident management team

1:60,000
 Map Created: 8/4/2017 5:34:22 AM

0 0.25 0.5 1 Miles

Map of the Rice Ridge Fire area showing the Eastern Area Incident Management Team's operations on August 4, 2017. The map covers 7056 acres and is based on IR flight data from 08/03 to 2358. It includes a scale bar (0 to 1 mile) and a north arrow. A QR code is provided for more information.

- Fire Origin
- Drop Point
- Helispot
- Incident Command Post
- Lookout
- Pump
- Repeater
- Staging Area
- Water Source
- Division
- Uncontrolled Fire Edge
- Completed Dozer Line
- Line Break Completed
- Management Action Point
- Maximum Manageable Area
- Ranger Station
- Campground
- Lookout
- Point of Interest
- Trailhead
- Viewing Area
- Best Access
- Trail Data
- Morrell Complex
- Research Forest
- Private
- State of Montana

113°39'0"W 113°38'0"W 113°37'0"W 113°36'0"W 113°35'0"W 113°34'0"W 113°33'0"W 113°32'0"W 113°31'0"W 113°30'0"W 113°29'0"W 113°28'0"W 113°27'0"W 113°26'0"W 113°25'0"W 113°24'0"W 113°23'0"W 113°22'0"W 113°21'0"W 113°20'0"W