

113°33'0"W


113°32'0"W

113°31'0"W

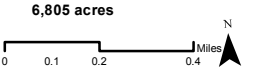
113°30'0"W

113°29'0"W

Structure Protection Map
RICE RIDGE FIRE
 MT-LNF-1464
August 3, 2017
 6,805 acres



1:25,776
 Map Created: 8/3/2017 1:49:54 PM

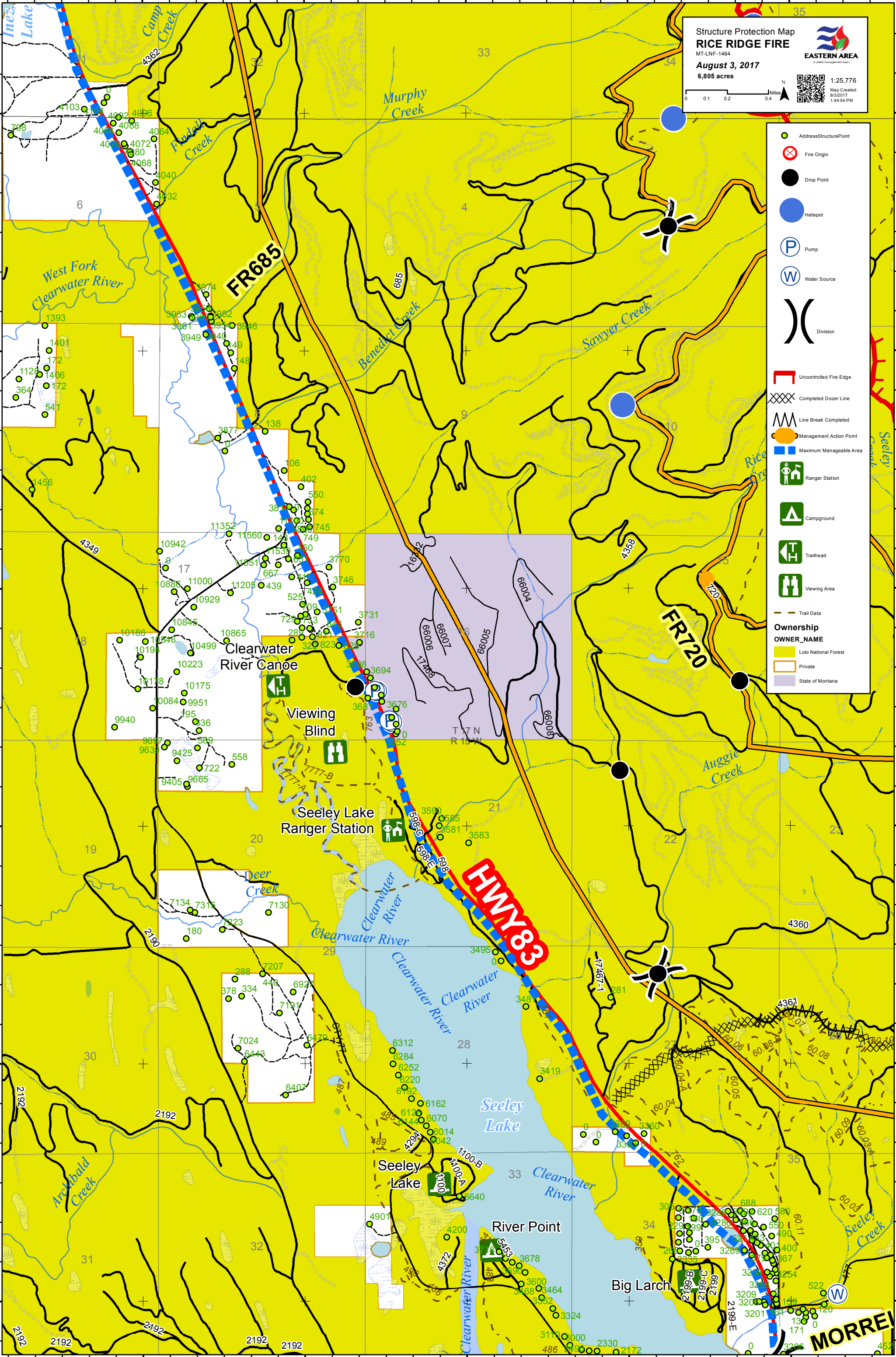


-  AddressStructurePoint
-  Fire Origin
-  Drop Point
-  Helispot
-  Pump
-  Water Source
-  Division
-  Uncontrolled Fire Edge
-  Completed Dozer Line
-  Line Break Completed
-  Management Action Point
-  Maximum Manageable Area
-  Ranger Station
-  Campground
-  Trailhead
-  Viewing Area
-  Trail Data

Ownership

OWNER_NAME

-  Lolo National Forest
-  Private
-  State of Montana



113°33'0"W

113°32'0"W

113°31'0"W

113°30'0"W

113°29'0"W

47°16'0"N
47°15'0"N
47°14'0"N
47°13'0"N
47°12'0"N
47°11'0"N

47°16'0"N
47°15'0"N
47°14'0"N
47°13'0"N
47°12'0"N
47°11'0"N