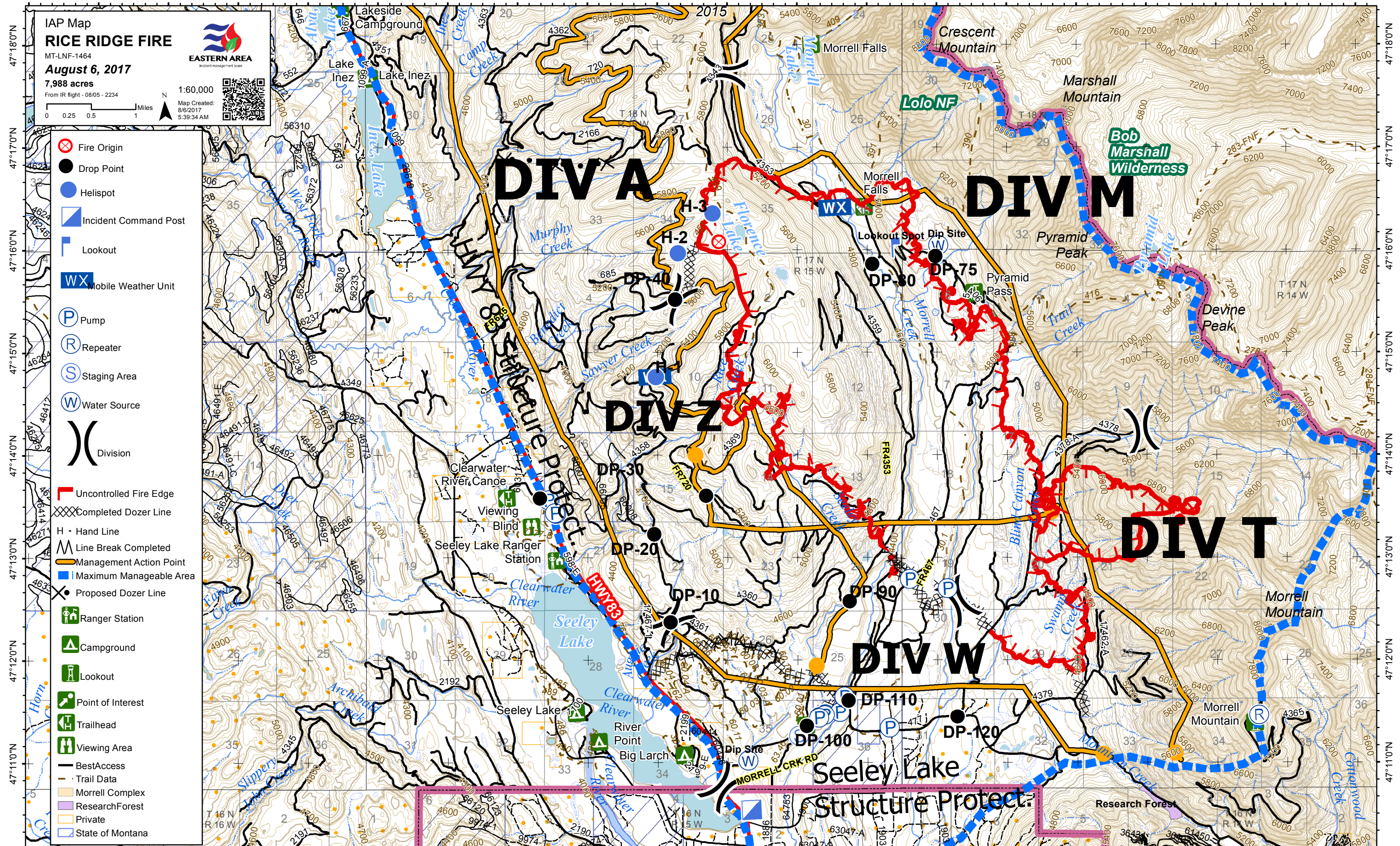


113°39'0"W 113°38'0"W 113°37'0"W 113°36'0"W 113°35'0"W 113°34'0"W 113°33'0"W 113°32'0"W 113°31'0"W 113°30'0"W 113°29'0"W 113°28'0"W 113°27'0"W 113°26'0"W 113°25'0"W 113°24'0"W 113°23'0"W 113°22'0"W 113°21'0"W 113°20'0"W



IAP Map
RICE RIDGE FIRE
 MT-LNF-1464
August 6, 2017
 7,988 acres
 From IR flight - 08/05 - 2234

EASTERN AREA
 incident management team

Map Created:
 8/6/2017
 5:39:34 AM

1:60,000

0 0.25 0.5 1 Miles

- Fire Origin
- Drop Point
- Helispot
- Incident Command Post
- Lookout
- Mobile Weather Unit
- Pump
- Repeater
- Staging Area
- Water Source
- Division
- Uncontrolled Fire Edge
- Completed Dozer Line
- Hand Line
- Line Break Completed
- Management Action Point
- Maximum Manageable Area
- Proposed Dozer Line
- Ranger Station
- Campground
- Lookout
- Point of Interest
- Trailhead
- Viewing Area
- Best Access
- Trail Data
- Morrell Complex
- Research Forest
- Private
- State of Montana

113°39'0"W 113°38'0"W 113°37'0"W 113°36'0"W 113°35'0"W 113°34'0"W 113°33'0"W 113°32'0"W 113°31'0"W 113°30'0"W 113°29'0"W 113°28'0"W 113°27'0"W 113°26'0"W 113°25'0"W 113°24'0"W 113°23'0"W 113°22'0"W 113°21'0"W 113°20'0"W