

113°27'0"W 113°26'0"W 113°25'0"W 113°24'0"W 113°23'0"W 113°22'0"W 113°21'0"W

Rice Ridge Fire

MT-LNF-001464

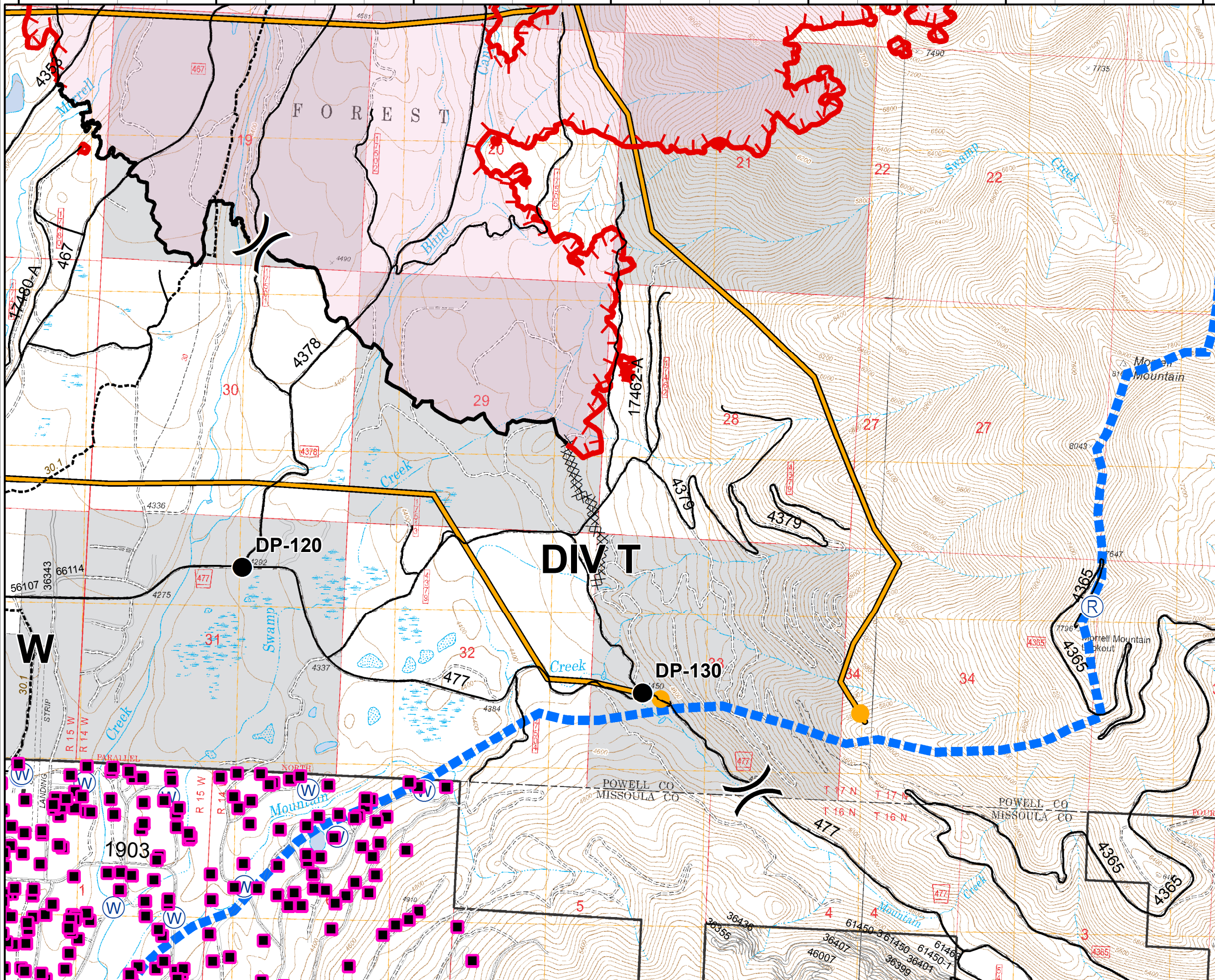
OPS DIV Map

August 7, 2017

From Ir 8/6 @22:32

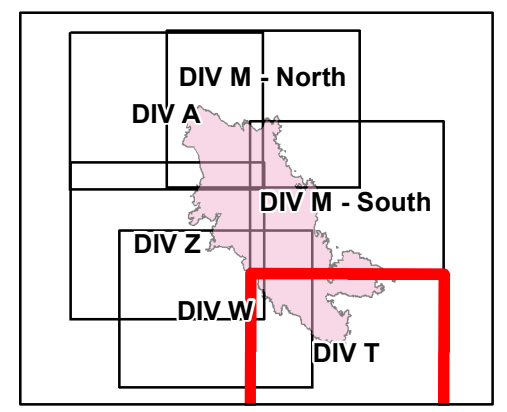
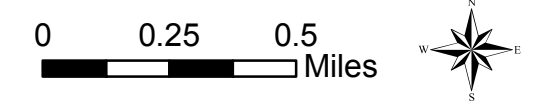
DIV T

47°13'0"N
47°12'0"N
47°11'0"N



Legend

- Structures
- Repeater
- Staging Area
- Water Source
- Drop Point
- Trail Data
- Uncontrolled Fire Edge
- Completed Dozer Line
- Completed Line
- Management Action Point
- Maximum Manageable Area
- Fire Area



113°31'0"W 113°30'0"W 113°29'0"W 113°28'0"W 113°27'0"W 113°26'0"W

Rice Ridge Fire

MT-LNF-001464

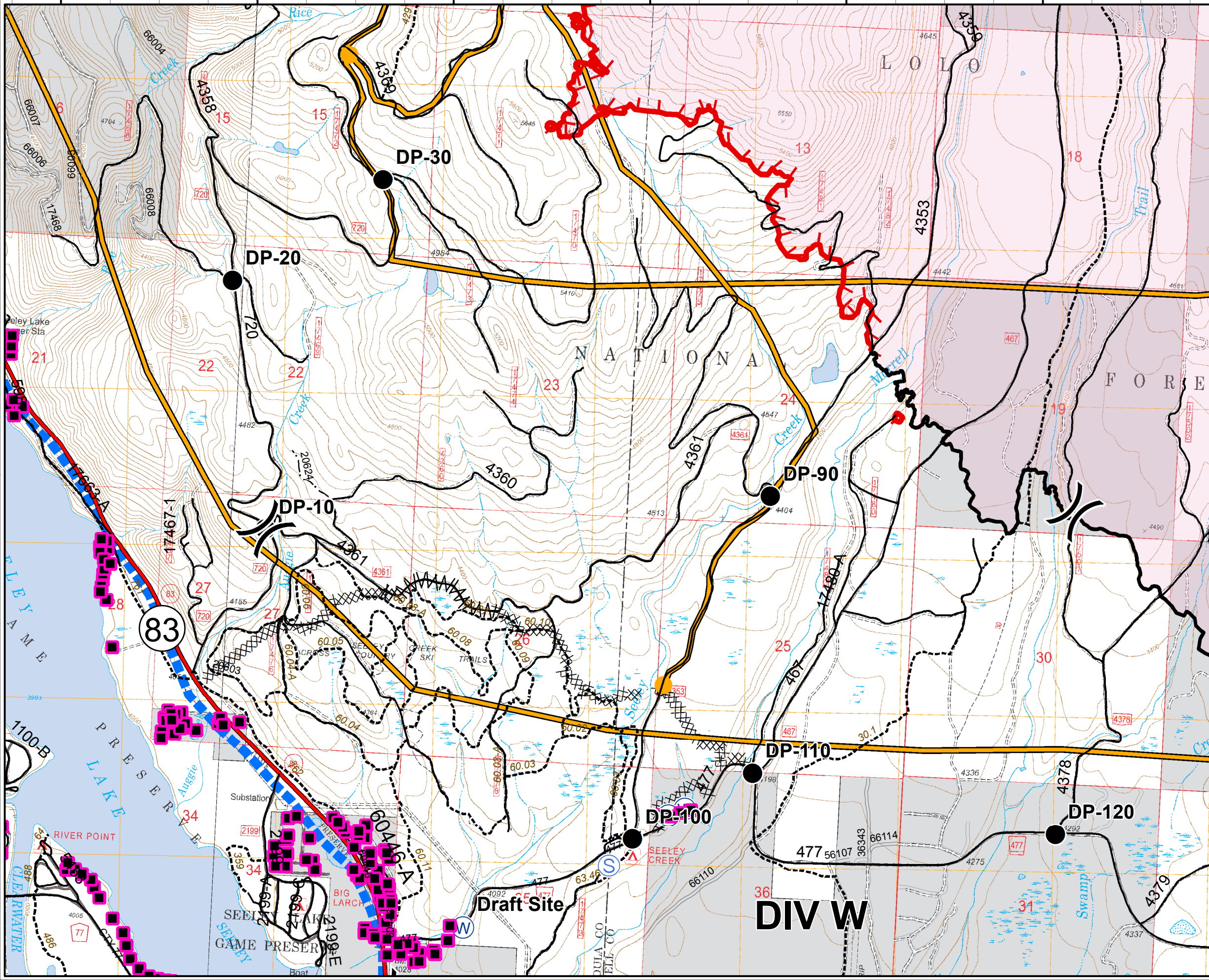
OPS DIV Map

August 7, 2017

From Ir 8/6 @22:32

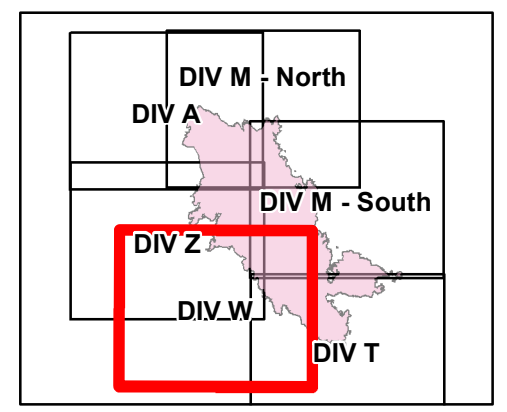
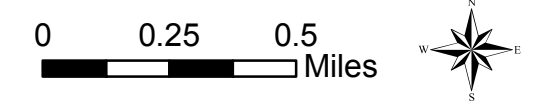
DIV W

47°14'0"N
47°13'0"N
47°12'0"N
47°11'0"N



Legend

- Structures
- Staging Area
- Division
- Water Source
- Trail Data
- Uncontrolled Fire Edge
- Drop Point
- Completed Dozer Line
- Completed Line
- Line Break Completed
- Management Action Point
- Maximum Manageable Area
- Fire Area



Rice Ridge Fire

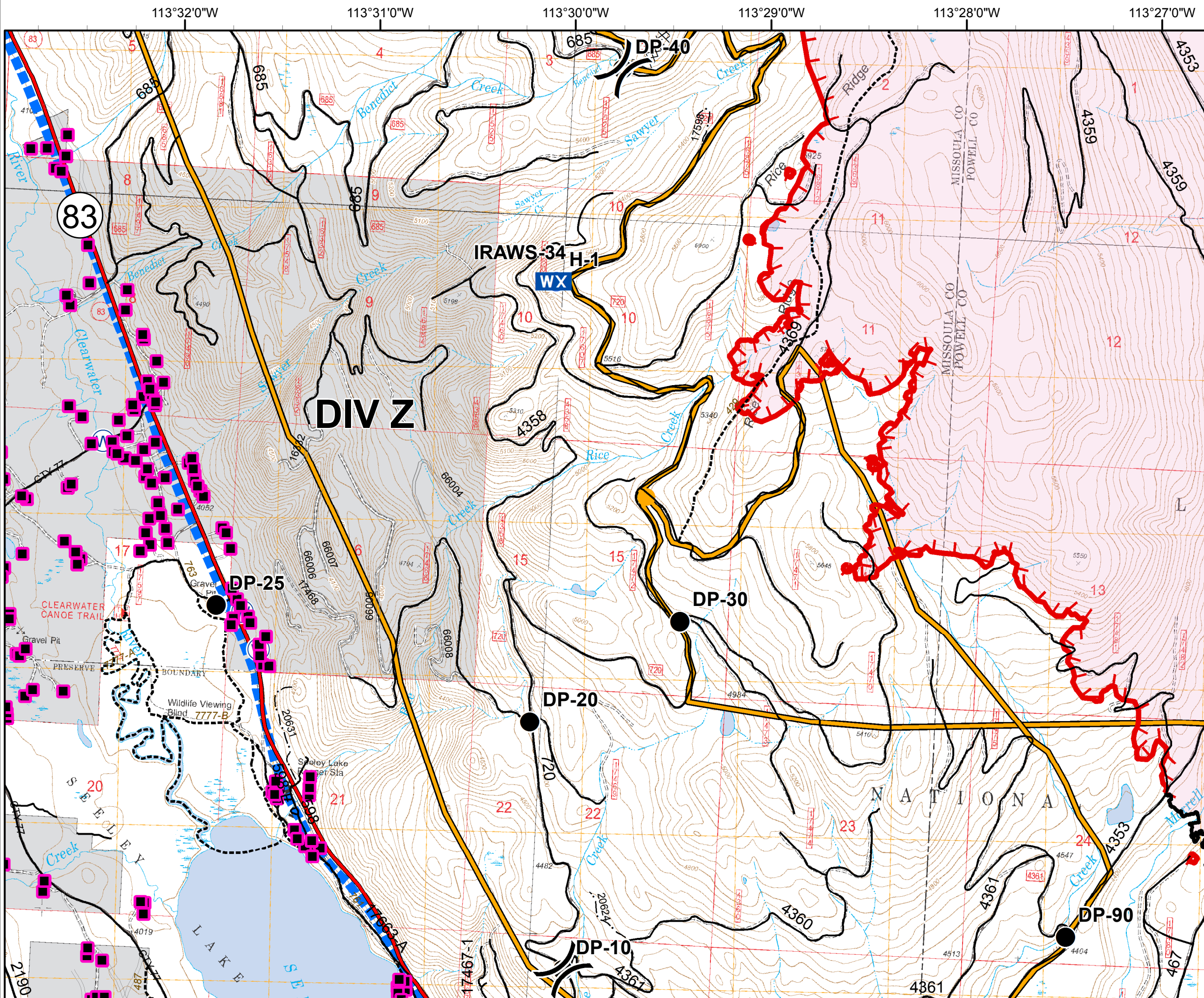
MT-LNF-001464

OPS DIV Map

August 7, 2017

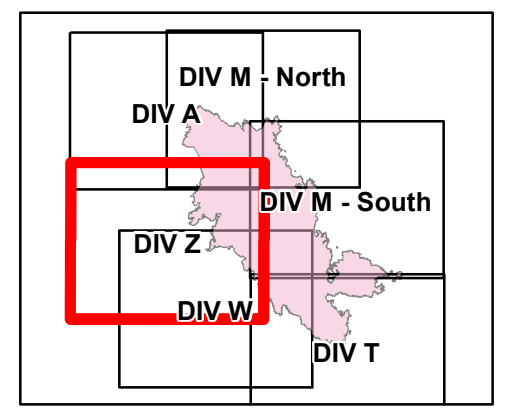
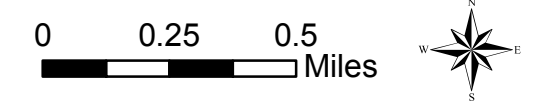
From Ir 8/6 @22:32

DIV Z



Legend

- Structures
- Helispot
- Division
- Mobile Weather Unit
- Drop Point
- Water Source
- Trail Data
- Uncontrolled Fire Edge
- Completed Dozer Line
- Completed Line
- Management Action Point
- Maximum Manageable Area
- Fire Area



Rice Ridge Fire

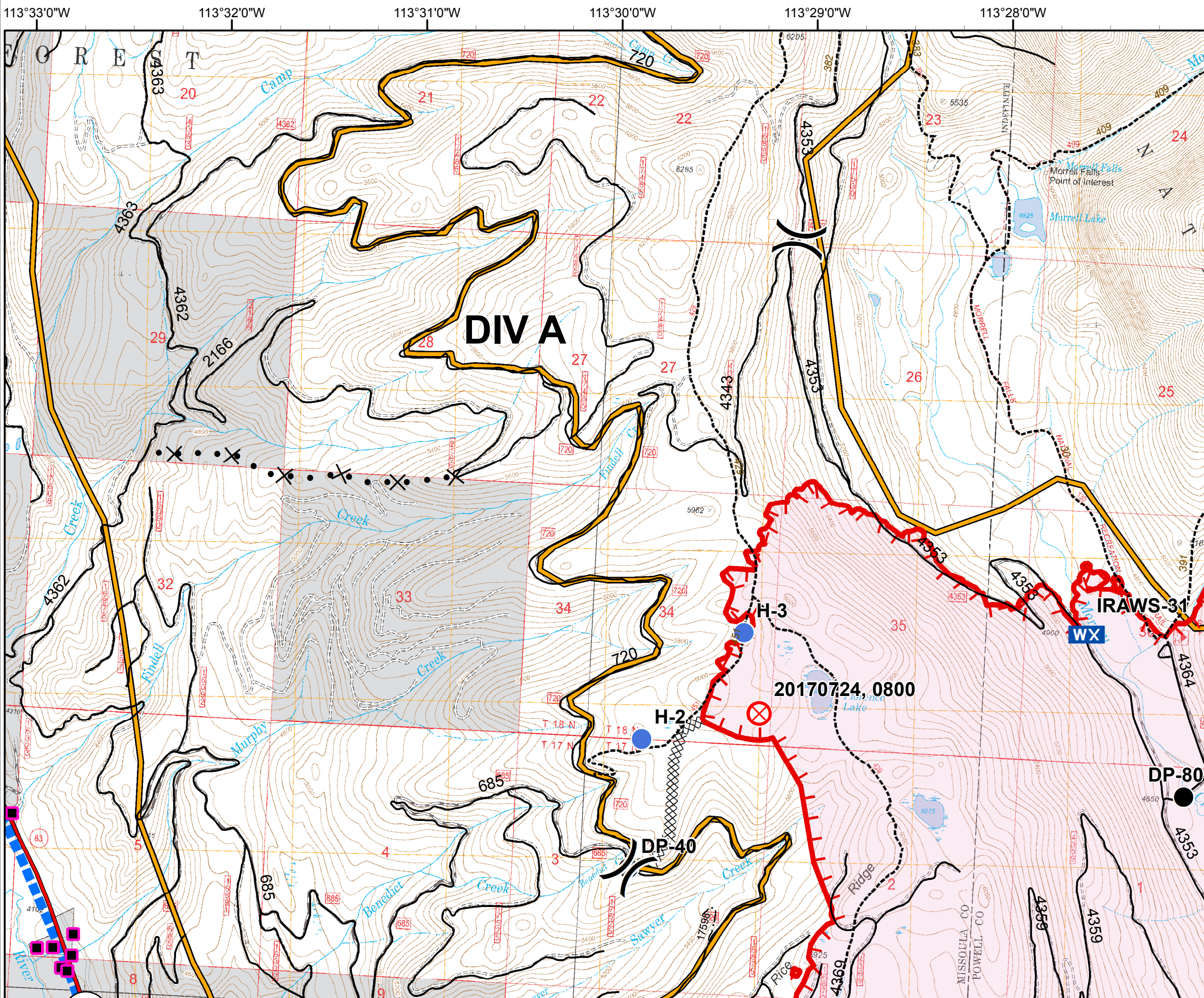
MT-LNF-001464

OPS DIV Map

August 7, 2017

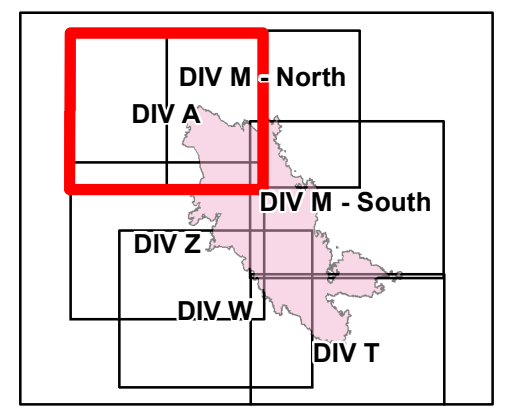
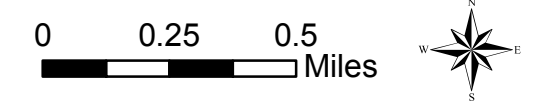
From Ir 8/6 @22:32

DIV A



Legend

- Structures
- Division
- Drop Point
- Trail Data
- Uncontrolled Fire Edge
- Completed Dozer Line
- Management Action Point
- Maximum Manageable Area
- Proposed Dozer Line
- Fire Area
- Fire Origin
- Helispot
- Mobile Weather Unit



Rice Ridge Fire

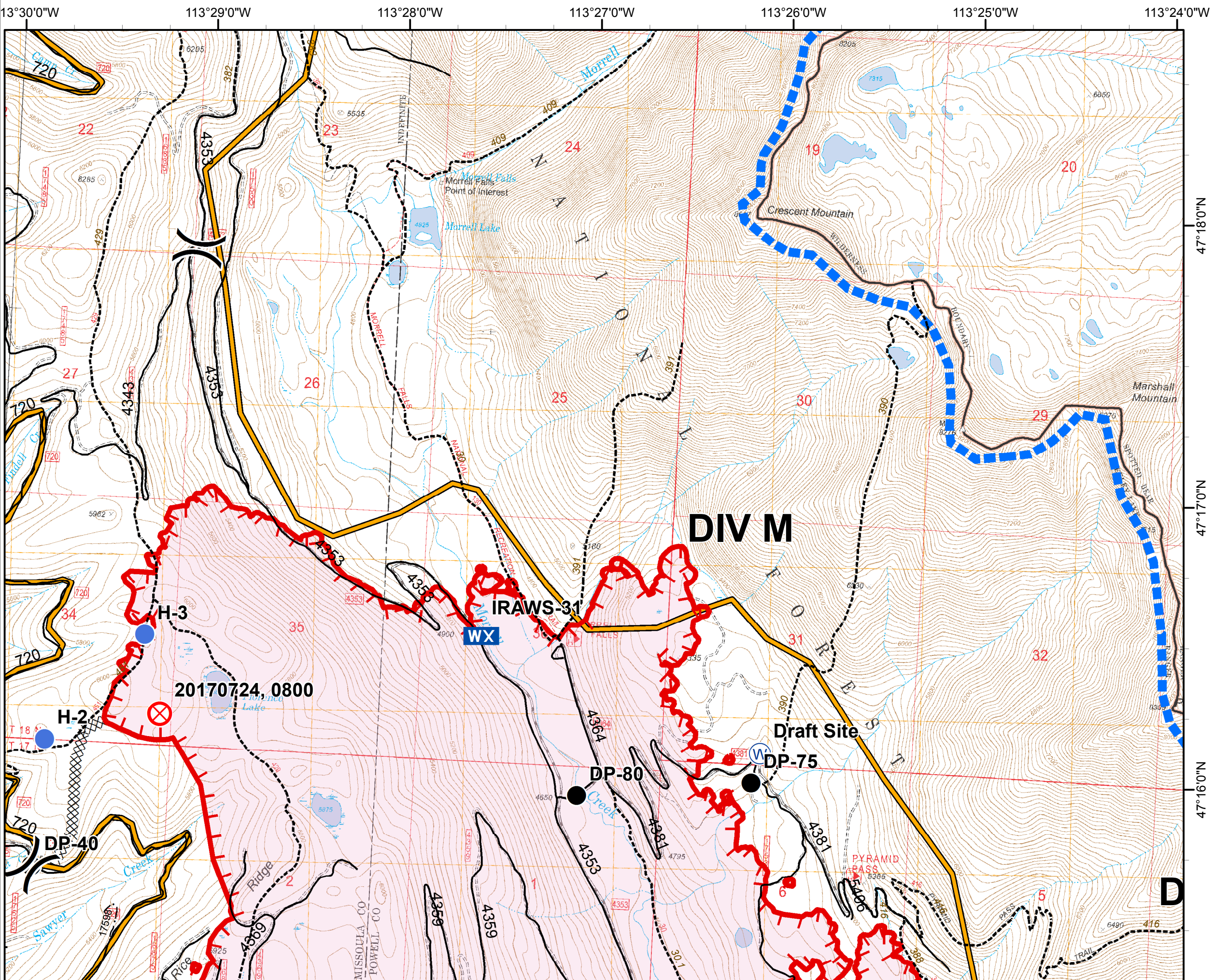
MT-LNF-001464

OPS DIV Map

August 7, 2017

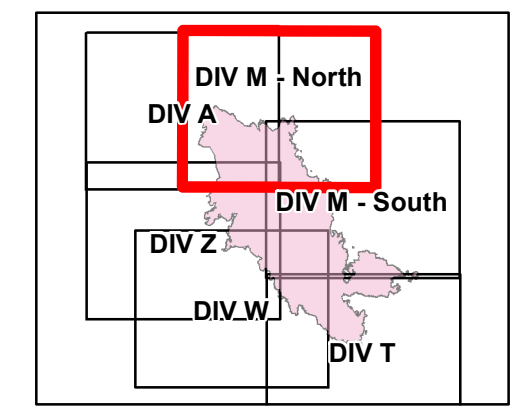
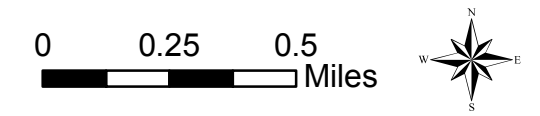
From Ir 8/6 @22:32

DIV M - North



Legend

- Helispot
- Division
- Mobile Weather Unit
- Drop Point
- Water Source
- Fire Origin
- Trail Data
- Uncontrolled Fire Edge
- Completed Dozer Line
- Management Action Point
- Maximum Manageable Area
- Fire Area



Rice Ridge Fire

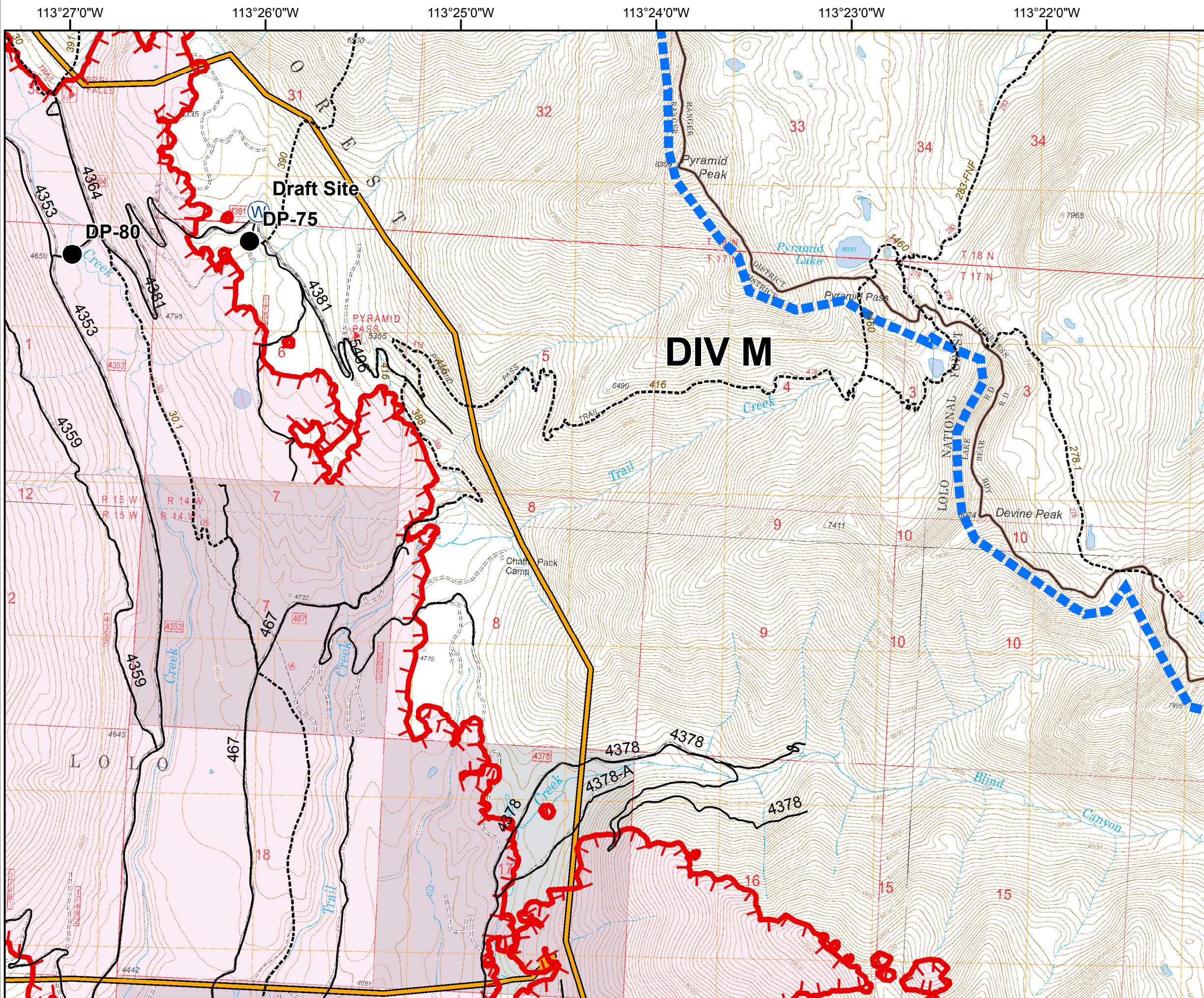
MT-LNF-001464

OPS DIV Map

August 7, 2017

From Ir 8/6 @22:32

DIV M - South



Legend

- Drop Point
- Ⓜ Water Source
- Trail Data
- ▬ Uncontrolled Fire Edge
- Management Action Point
- ▬ Maximum Manageable Area
- ▭ Fire Area

