

Rice Ridge Fire

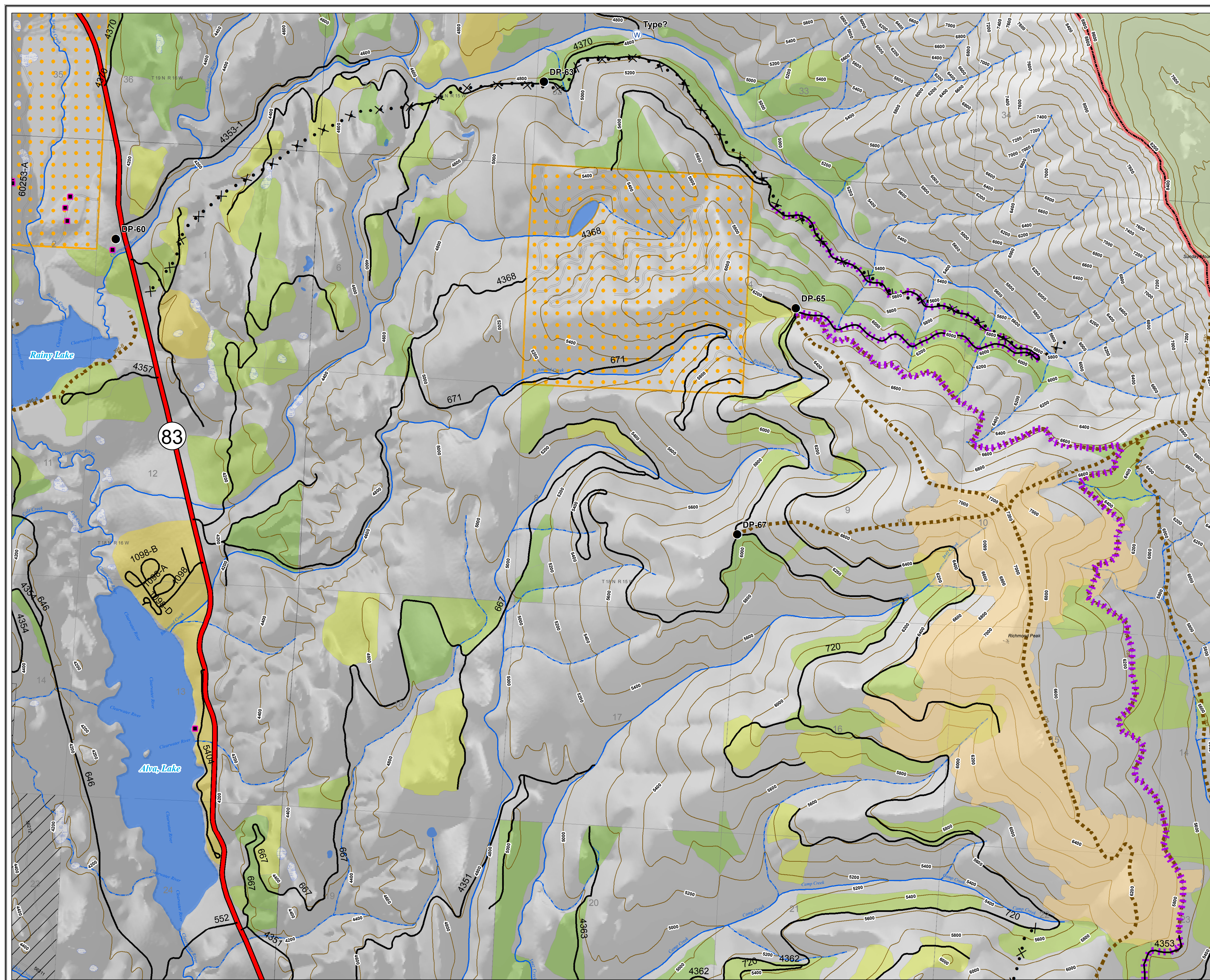
MT-LNF-001464

OPS Map

North Ops

August 9, 2017

9,286 Acres (IR 8/8/17 @ 2250)



Legend

- Drop Point
- Ⓜ Water Source
- ✕ • ✕ Proposed Dozer Line
- FirePolygon



0 0.25 0.5 1 Miles

Rice Ridge Fire

MT-LNF-001464

OPS Map

DIV A

August 9, 2017

9,286 Acres (IR 8/8/17 @ 2250)

BRANCH I

DIV A

Legend



Branch



Division



Drop Point



Fire Origin



Helispot



Mobile Weather Unit



Uncontrolled Fire Edge



Completed Dozer Line



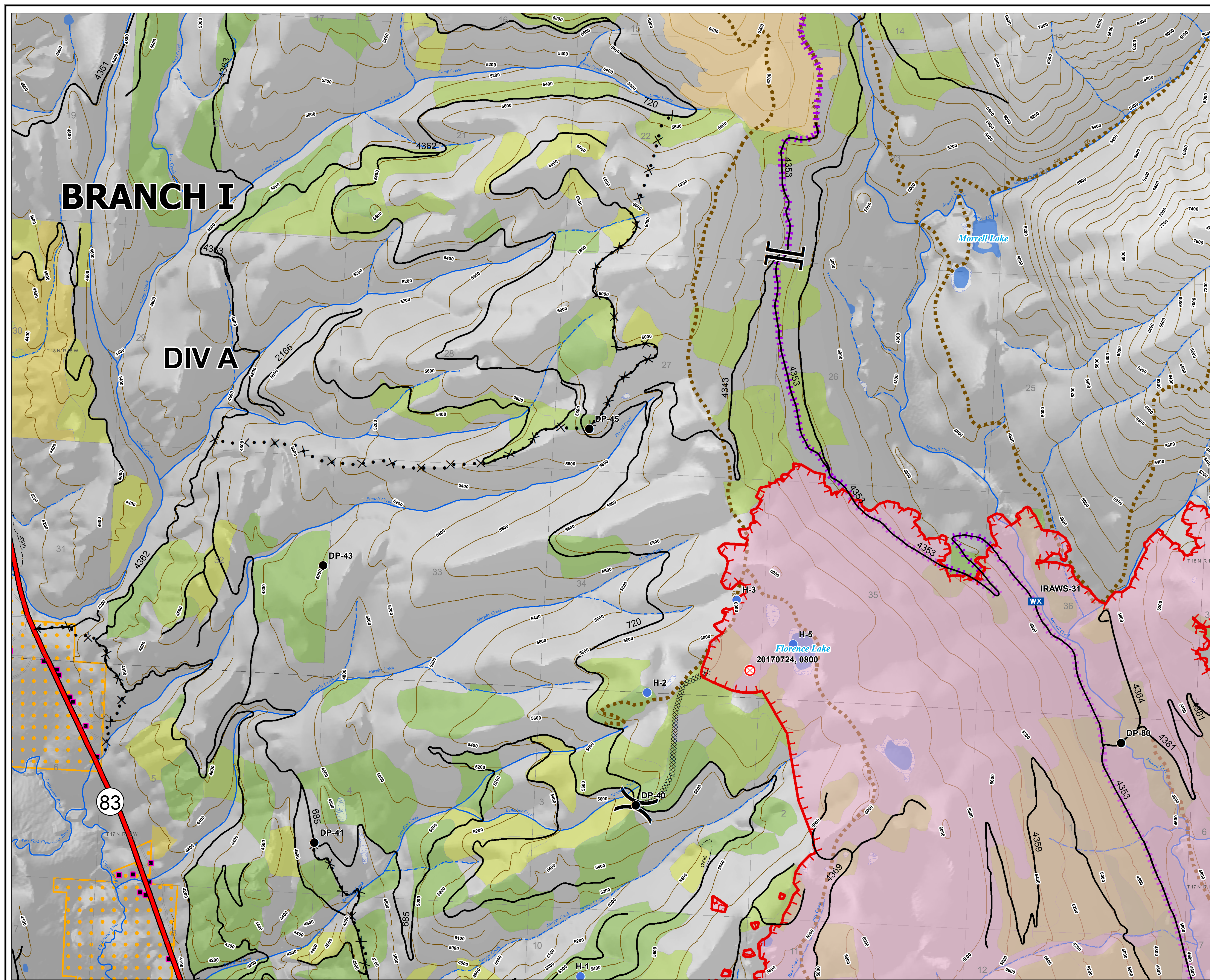
Proposed Dozer Line



Fire Polygon



0 0.25 0.5 1 Miles



Rice Ridge Fire

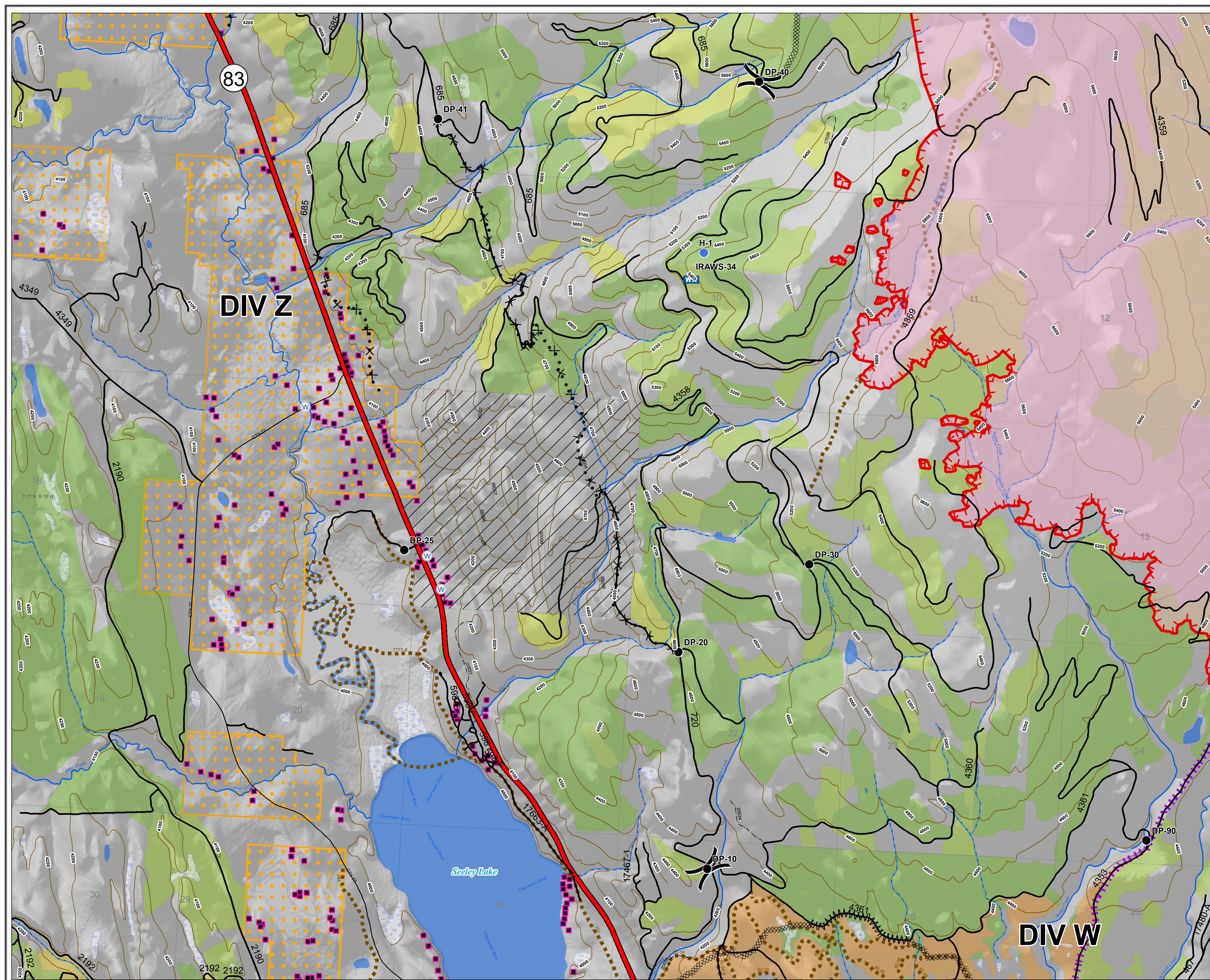
MT-LNF-001464

OPS Map

DIV Z

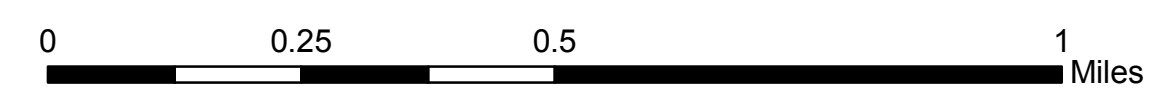
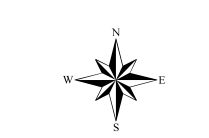
August 9, 2017

9,286 Acres (IR 8/8/17 @ 2250)



Legend

- Division
- Drop Point
- Helispot
- Mobile Weather Unit
- Water Source
- Uncontrolled Fire Edge
- Completed Dozer Line
- Line Break Completed
- Proposed Dozer Line
- FirePolygon



Rice Ridge Fire

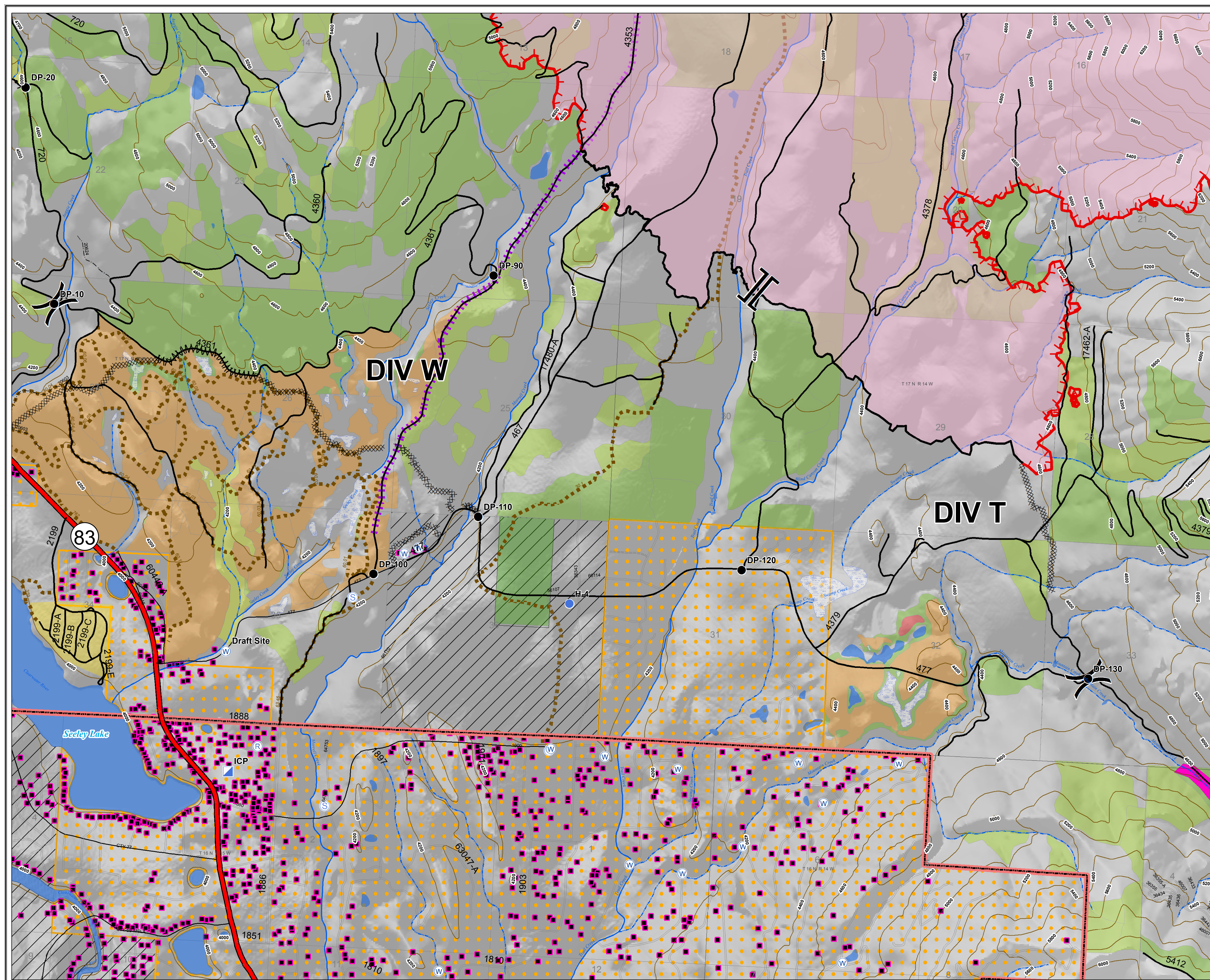
MT-LNF-001464

OPS Map

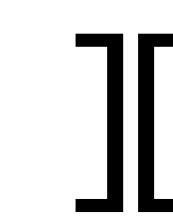
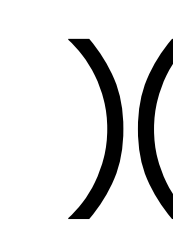












DIV W & T

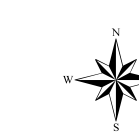
August 9, 2017

9,286 Acres (IR 8/8/17 @ 2250)



Legend

-  Branch
-  Division
-  Drop Point
-  Helispot
-  Incident Command Post
-  Repeater
-  Staging Area
-  Water Source
-  Uncontrolled Fire Edge
-  Completed Dozer Line
-  Completed Line
-  Line Break Completed
-  Proposed Dozer Line
-  FirePolygon



0 0.25 0.5 1 Miles

Rice Ridge Fire

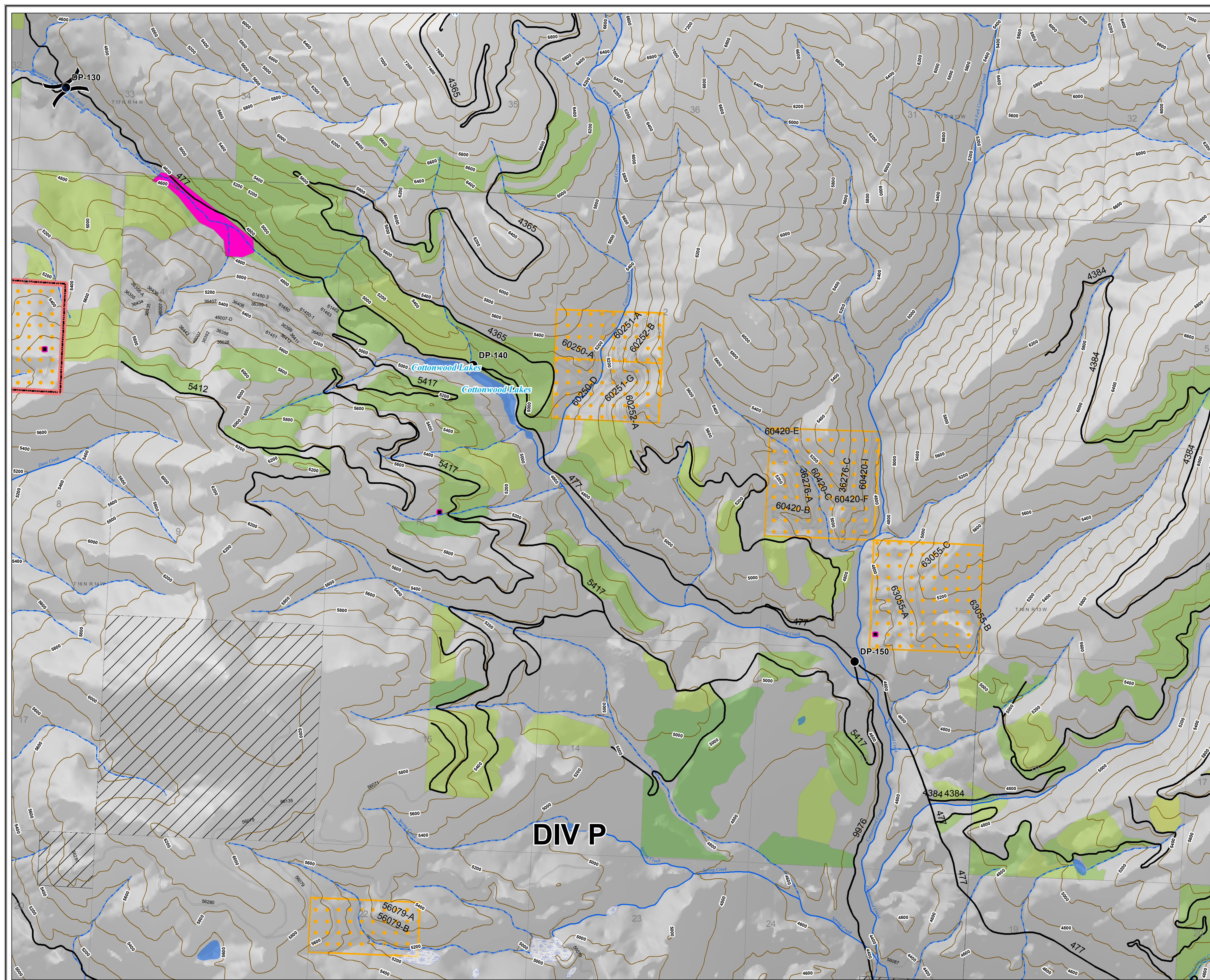
MT-LNF-001464

OPS Map

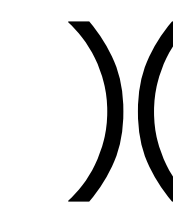



DIV P - West

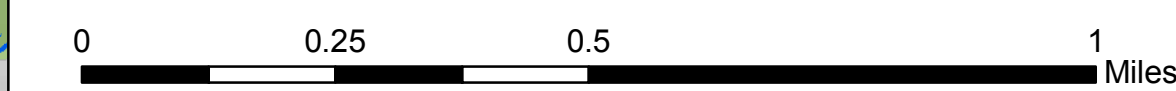
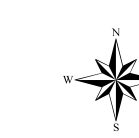
August 9, 2017

9,286 Acres (IR 8/8/17 @ 2250)



Legend

-  Division
-  Drop Point
-  Repeater
-  FirePolygon



Rice Ridge Fire

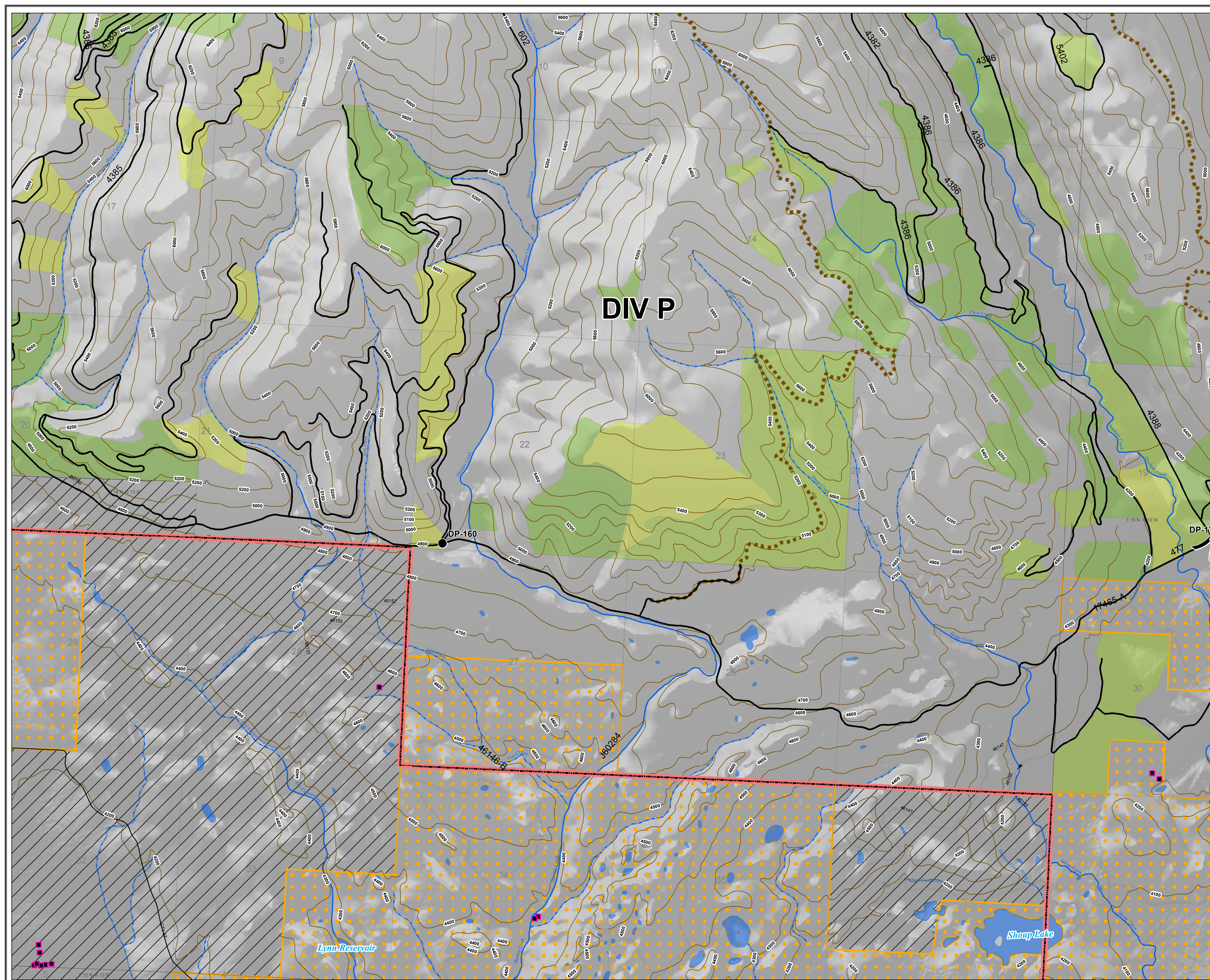
MT-LNF-001464

OPS Map

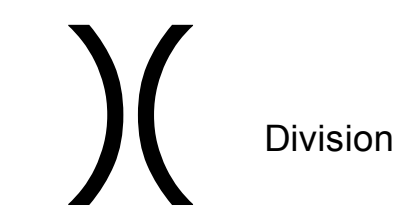
DIV P - East

August 9, 2017

9,286 Acres (IR 8/8/17 @ 2250)



Legend



Division



Drop Point



FirePolygon

