

Rice Ridge Fire

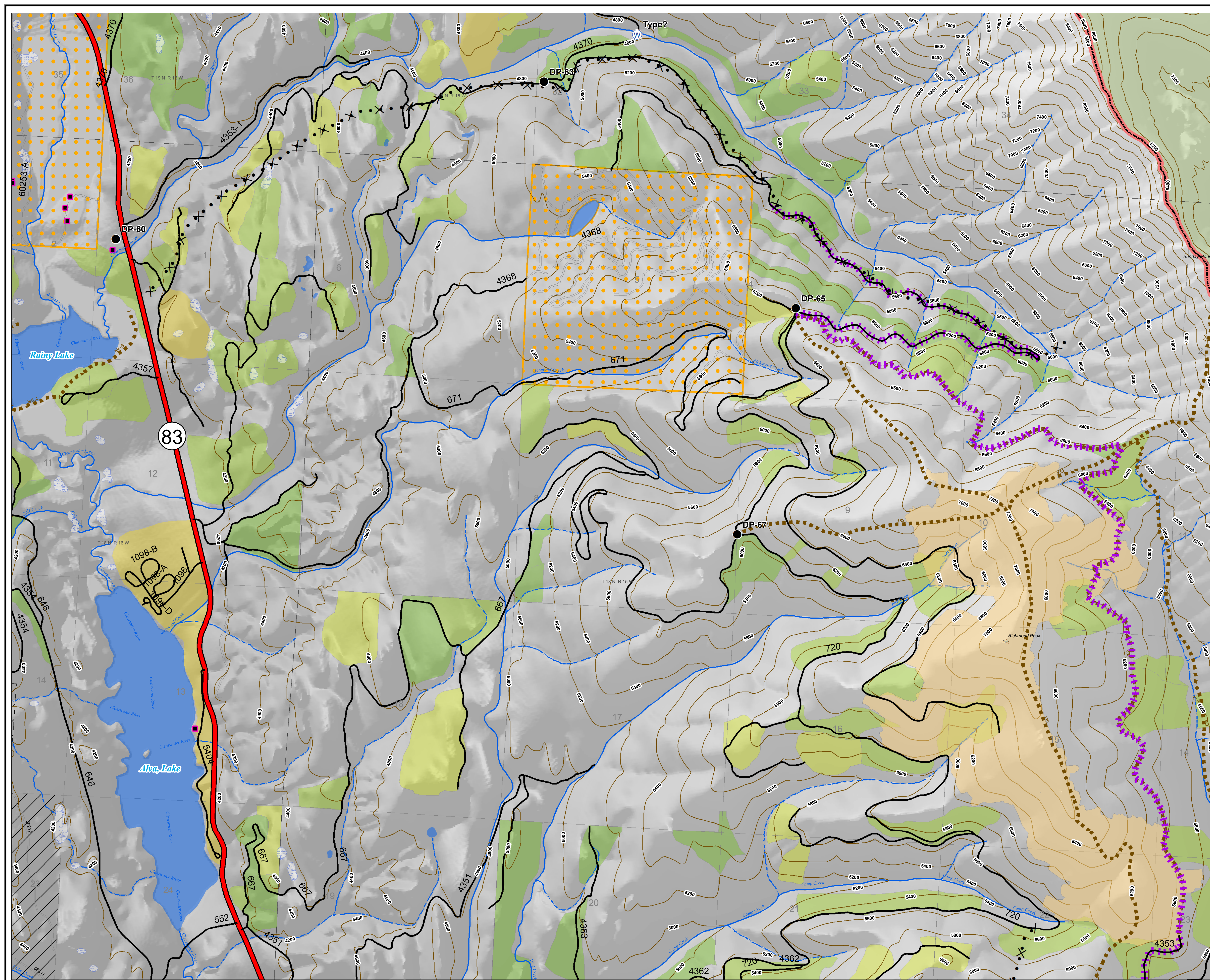
MT-LNF-001464

OPS Map

North Ops

August 10, 2017

10,194 Acres (Ops Flight 8/9/17 @ 2100)



Legend

- Drop Point
- Ⓜ Water Source
- ✕ • ✕ Proposed Dozer Line
- FirePolygon



0 0.25 0.5 1 Miles

Rice Ridge Fire

MT-LNF-001464

OPS Map

DIV A

August 10, 2017

10,194 Acres (Ops Flight 8/9/17 @ 2100)

BRANCH I

DIV A

Legend



Branch



Division



Drop Point



Fire Origin



Helispot



Mobile Weather Unit



Uncontrolled Fire Edge



Completed Dozer Line



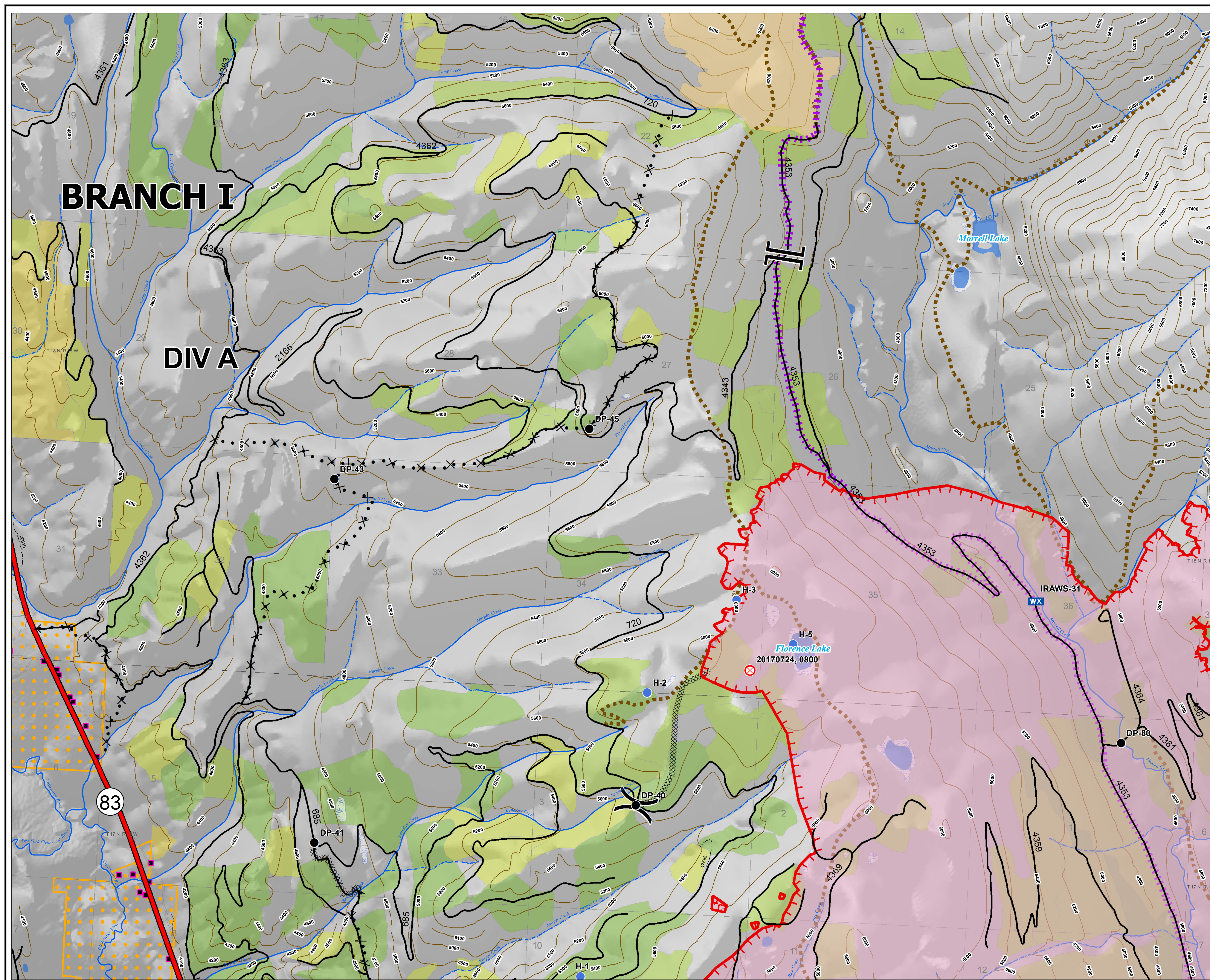
Proposed Dozer Line



Fire Polygon



0 0.25 0.5 1 Miles



Rice Ridge Fire

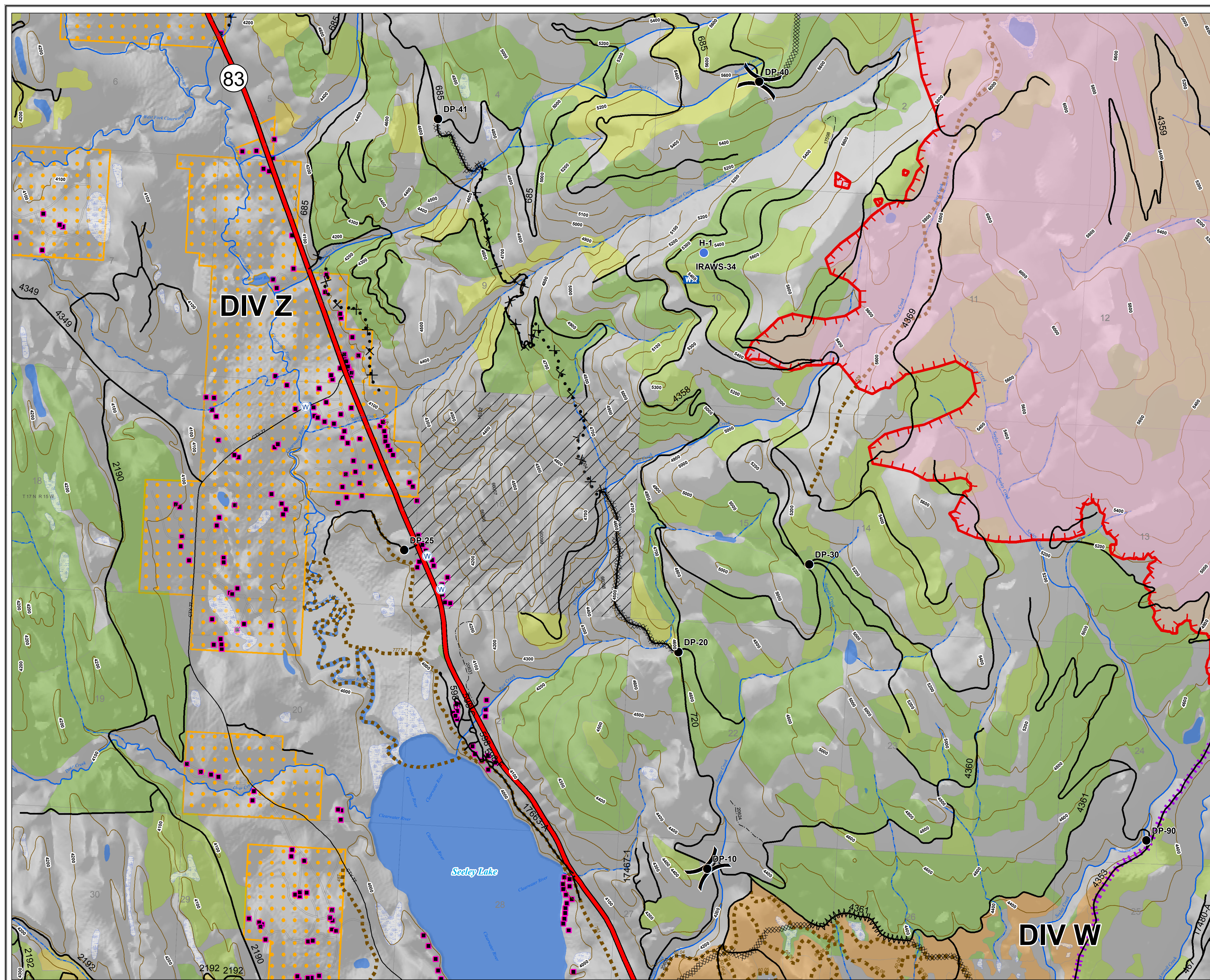
MT-LNF-001464

OPS Map











DIV Z

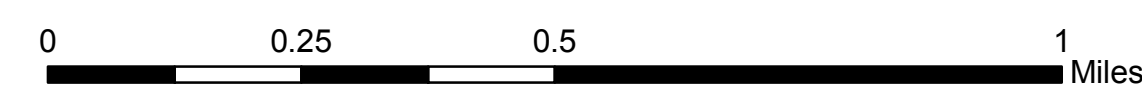
August 10, 2017

10,194 Acres (Ops Flight 8/9/17 @ 2100)



Legend

-  Division
-  Drop Point
-  Helispot
-  Mobile Weather Unit
-  Water Source
-  Uncontrolled Fire Edge
-  Completed Dozer Line
-  Line Break Completed
-  Proposed Dozer Line
-  FirePolygon



Rice Ridge Fire

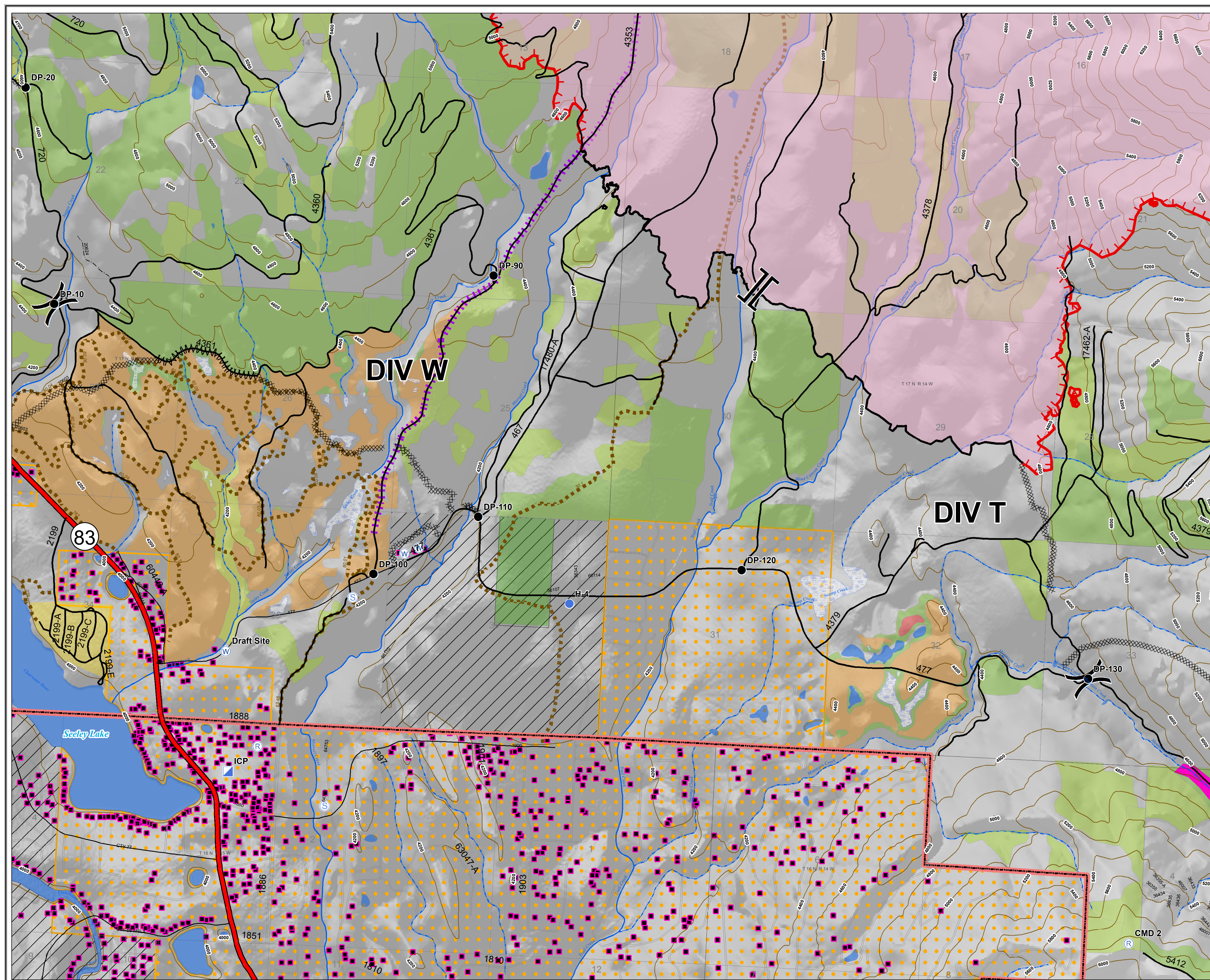
MT-LNF-001464

OPS Map

DIV W & T

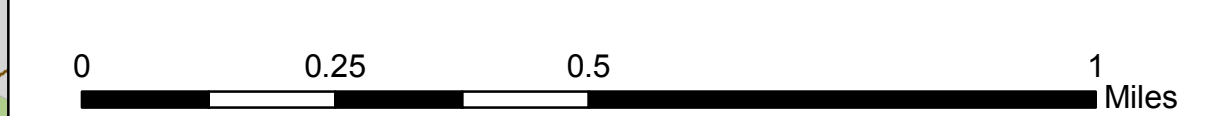
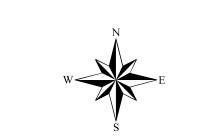
August 10, 2017

10,194 Acres (Ops Flight 8/9/17 @ 2100)



Legend

- Branch
- Division
- Drop Point
- Helispot
- Incident Command Post
- Repeater
- Staging Area
- Water Source
- Uncontrolled Fire Edge
- Completed Dozer Line
- Completed Line
- Line Break Completed
- FirePolygon



Rice Ridge Fire

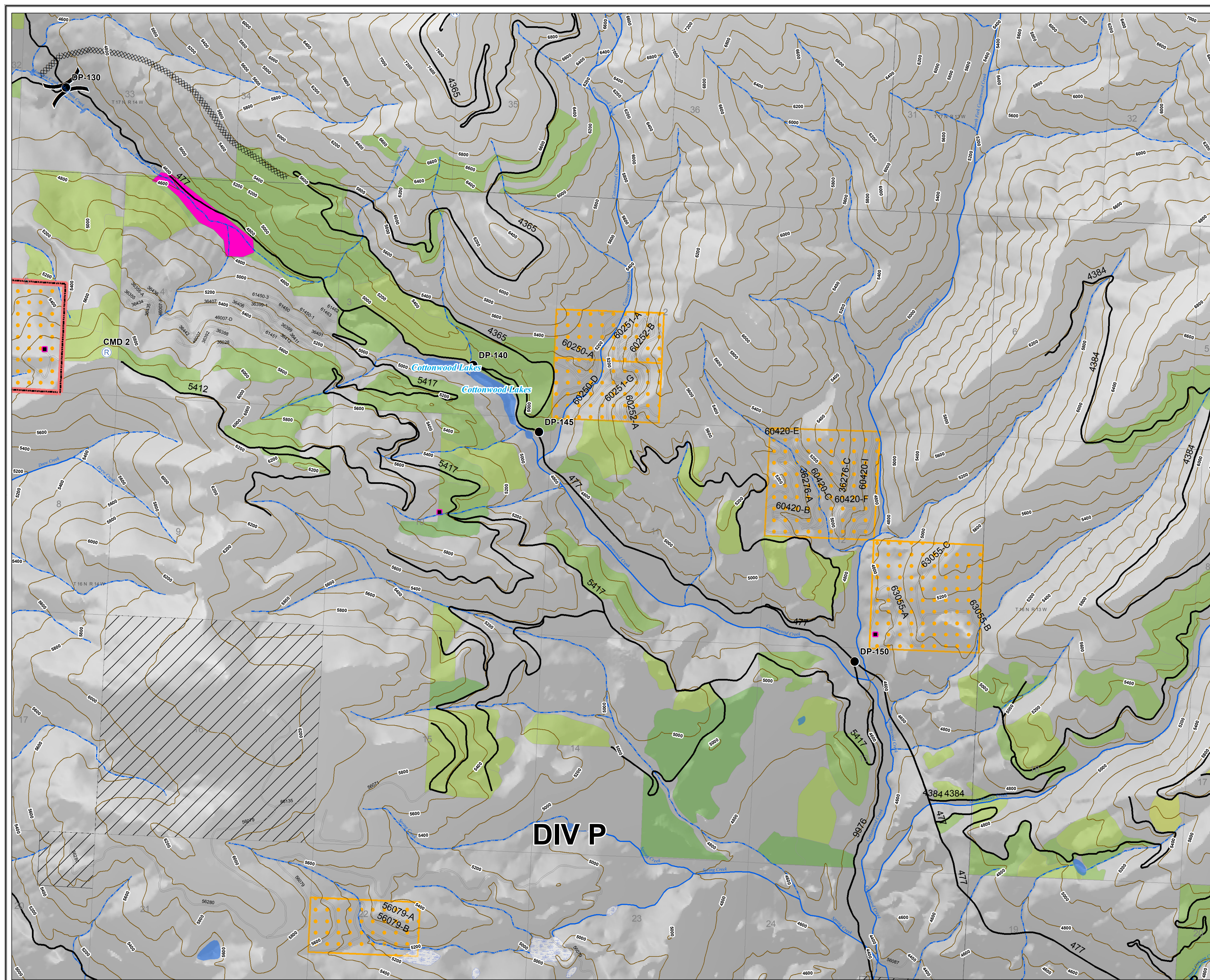
MT-LNF-001464

OPS Map

DIV P - West

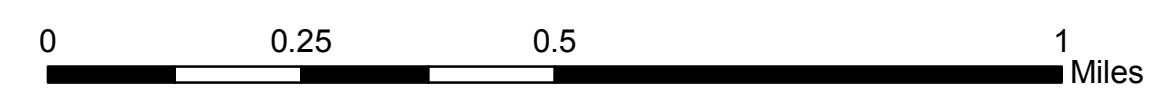
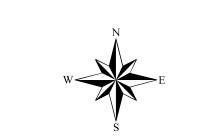
August 10, 2017

10,194 Acres (Ops Flight 8/9/17 @ 2100)



Legend

- () Division
- Drop Point
- Ⓡ Repeater
- ▨ Completed Dozer Line
- FirePolygon



Rice Ridge Fire

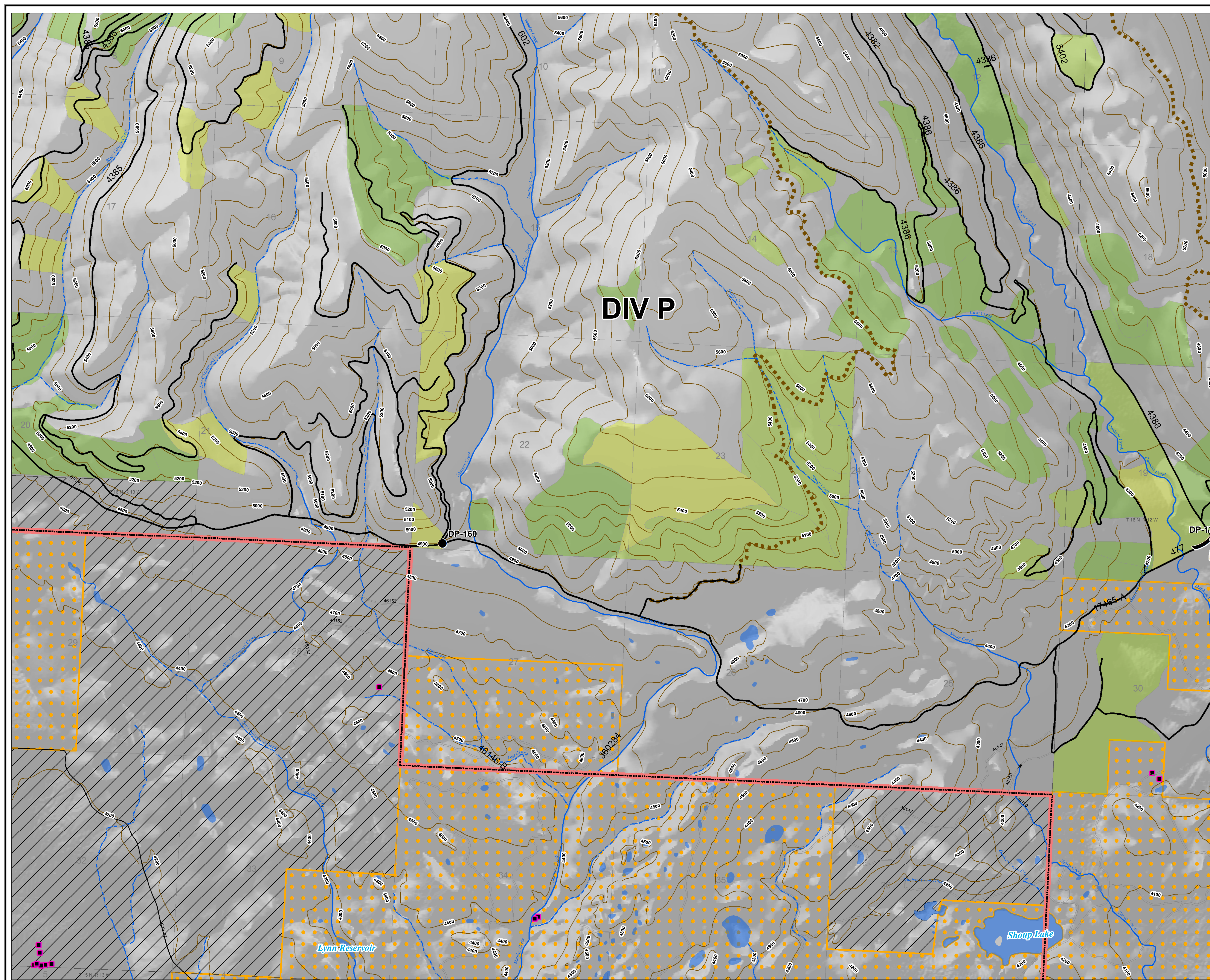
MT-LNF-001464

OPS Map

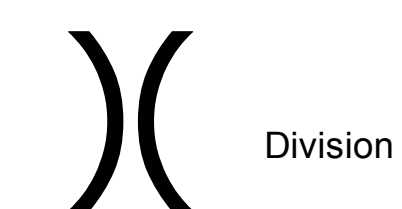
DIV P - East

August 10, 2017

10,194 Acres (Ops Flight 8/9/17 @ 2100)



Legend



Division



Drop Point



FirePolygon

