

113°27'0"W 113°26'0"W 113°25'0"W 113°24'0"W 113°23'0"W 113°22'0"W 113°21'0"W

Rice Ridge Fire

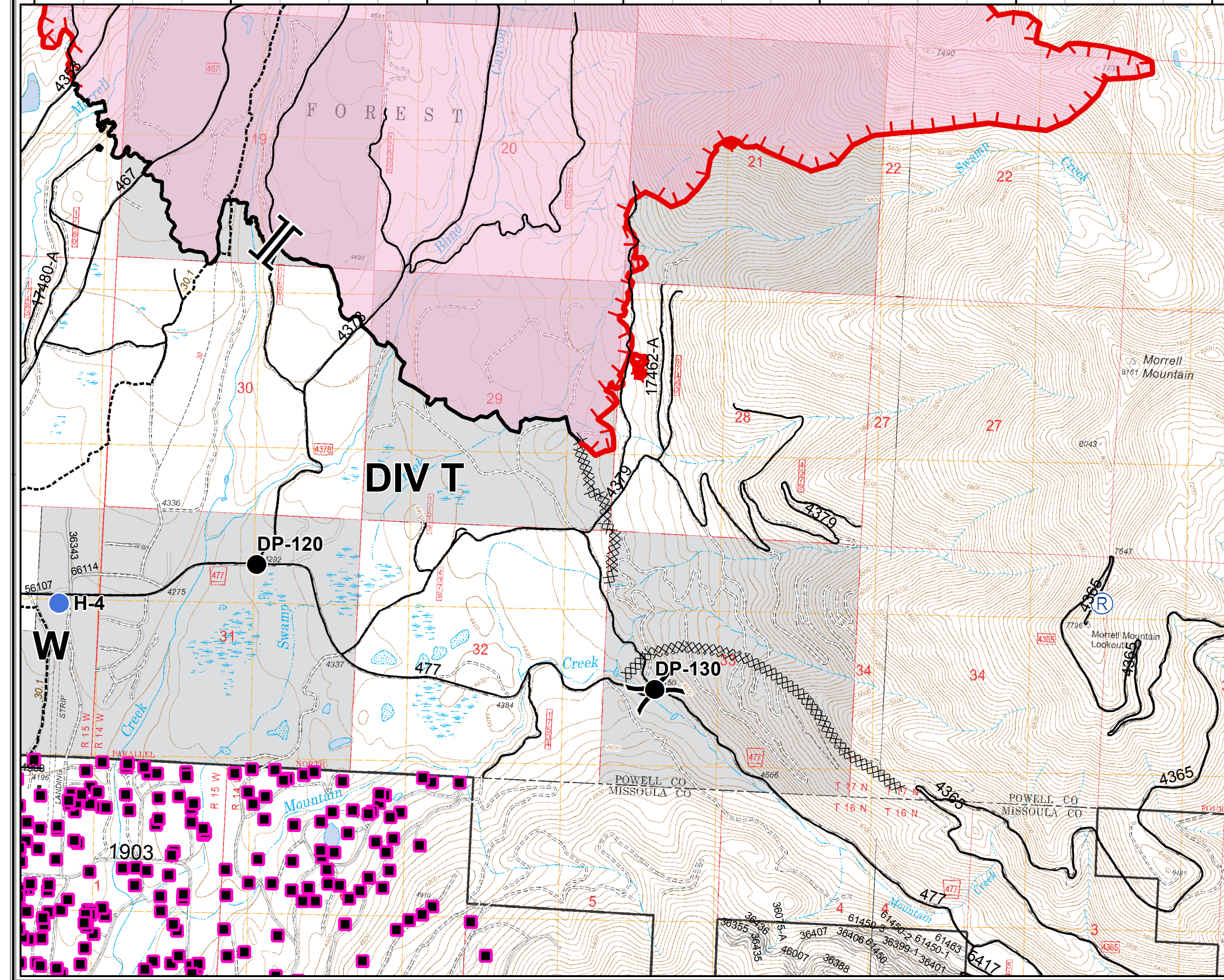
MT-LNF-001464

OPS DIV Map

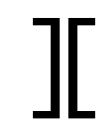
August 10, 2017

10,194 Acres (Ops Flight 8/9/17 @ 2100)

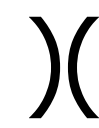
DIV T



47°13'0"N
47°12'0"N
47°11'0"N



Branch



Division



Structures



Drop Point



Helispot



Repeater



Uncontrolled Fire Edge



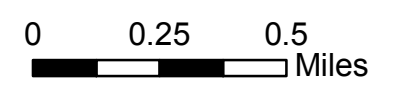
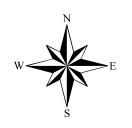
Completed Dozer Line



Completed Line



Fire Area



113°31'0"W 113°30'0"W 113°29'0"W 113°28'0"W 113°27'0"W 113°26'0"W

Rice Ridge Fire

MT-LNF-001464

OPS DIV Map

August 10, 2017

10,194 Acres (Ops Flight 8/9/17 @ 2100)

DIV W



Branch



Division



Structures



Drop Point



Helispot



Staging Area



Water Source



Uncontrolled Fire Edge



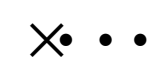
Completed Dozer Line



Completed Line



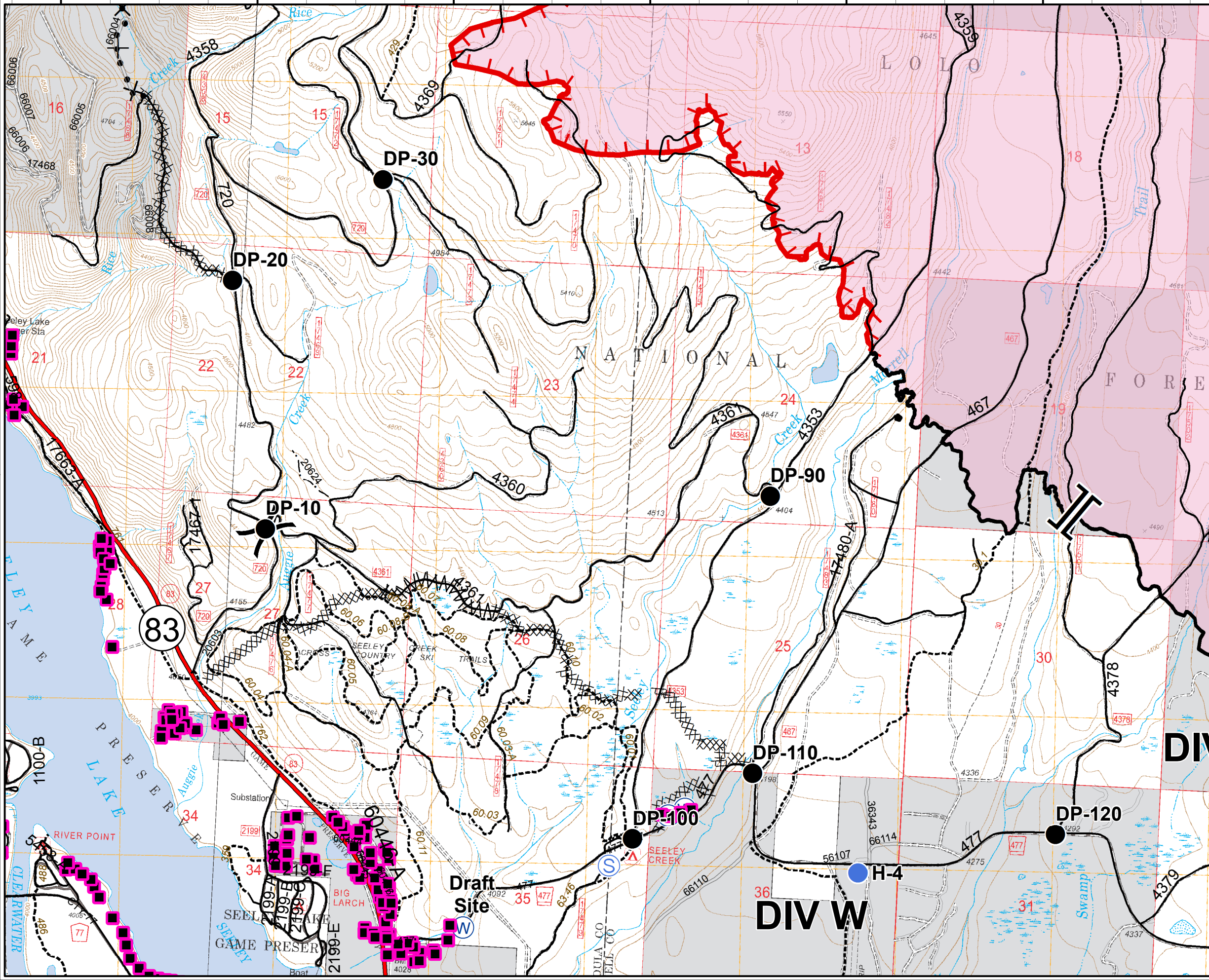
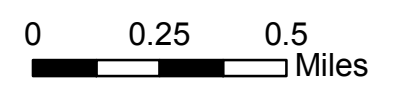
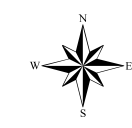
Line Break Completed



Proposed Dozer Line



Fire Area



47°14'0"N
47°13'0"N
47°12'0"N
47°11'0"N

Rice Ridge Fire

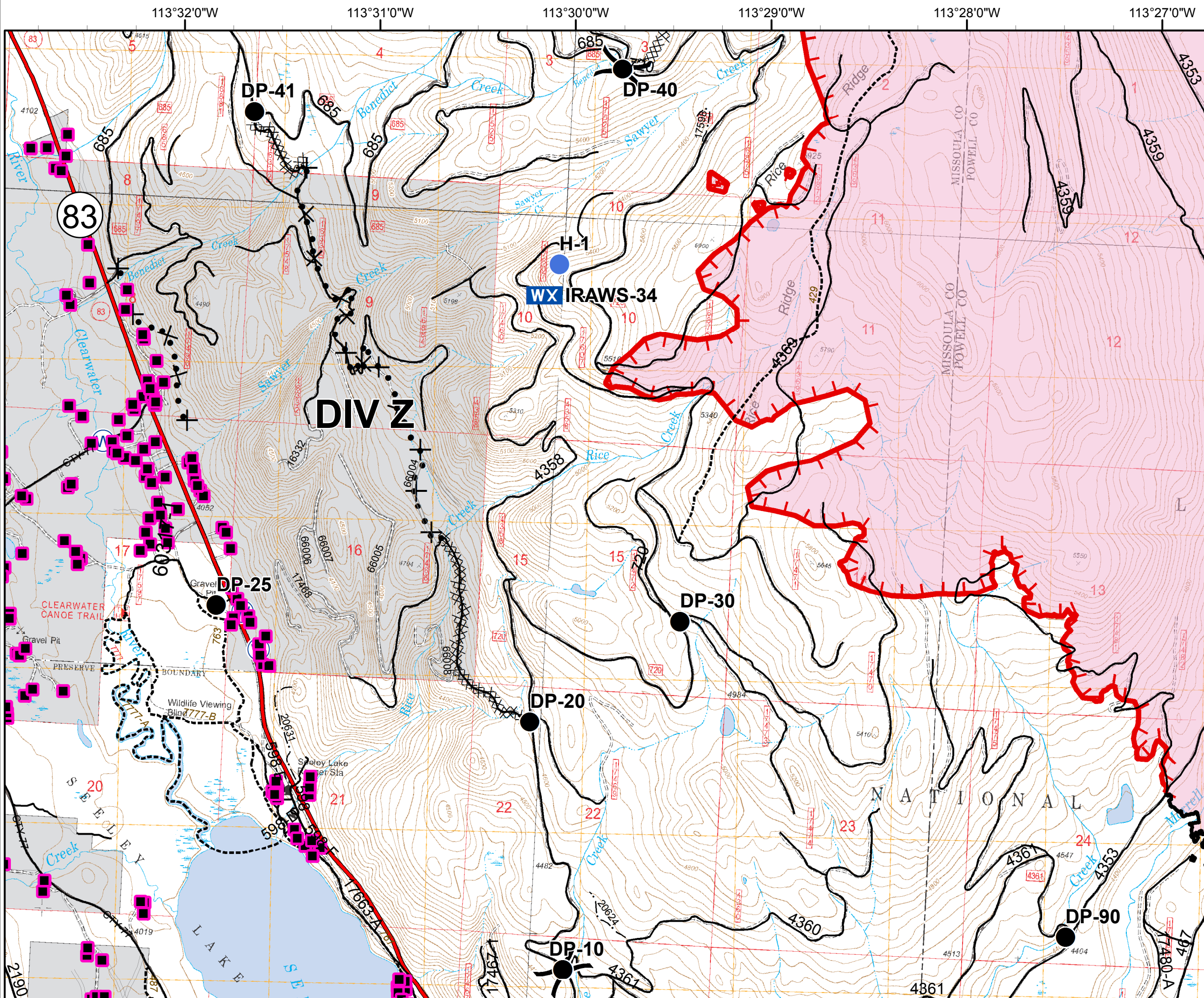
MT-LNF-001464



OPS DIV Map

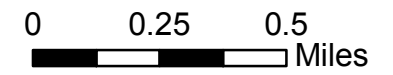
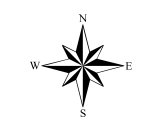
August 10, 2017

10,194 Acres (Ops Flight 8/9/17 @ 2100)

DIV Z



-  Division
-  Structures
-  Drop Point
-  Helispot
-  Mobile Weather Unit
-  Water Source
-  Uncontrolled Fire Edge
-  Completed Dozer Line
-  Completed Line
-  Proposed Dozer Line
-  Fire Area



Rice Ridge Fire

MT-LNF-001464

OPS DIV Map

August 10, 2017

10,194 Acres (Ops Flight 8/9/17 @ 2100)

DIV A



Branch



Division



Structures



Drop Point



Fire Origin



Helispot



Mobile Weather Unit



Uncontrolled Fire Edge



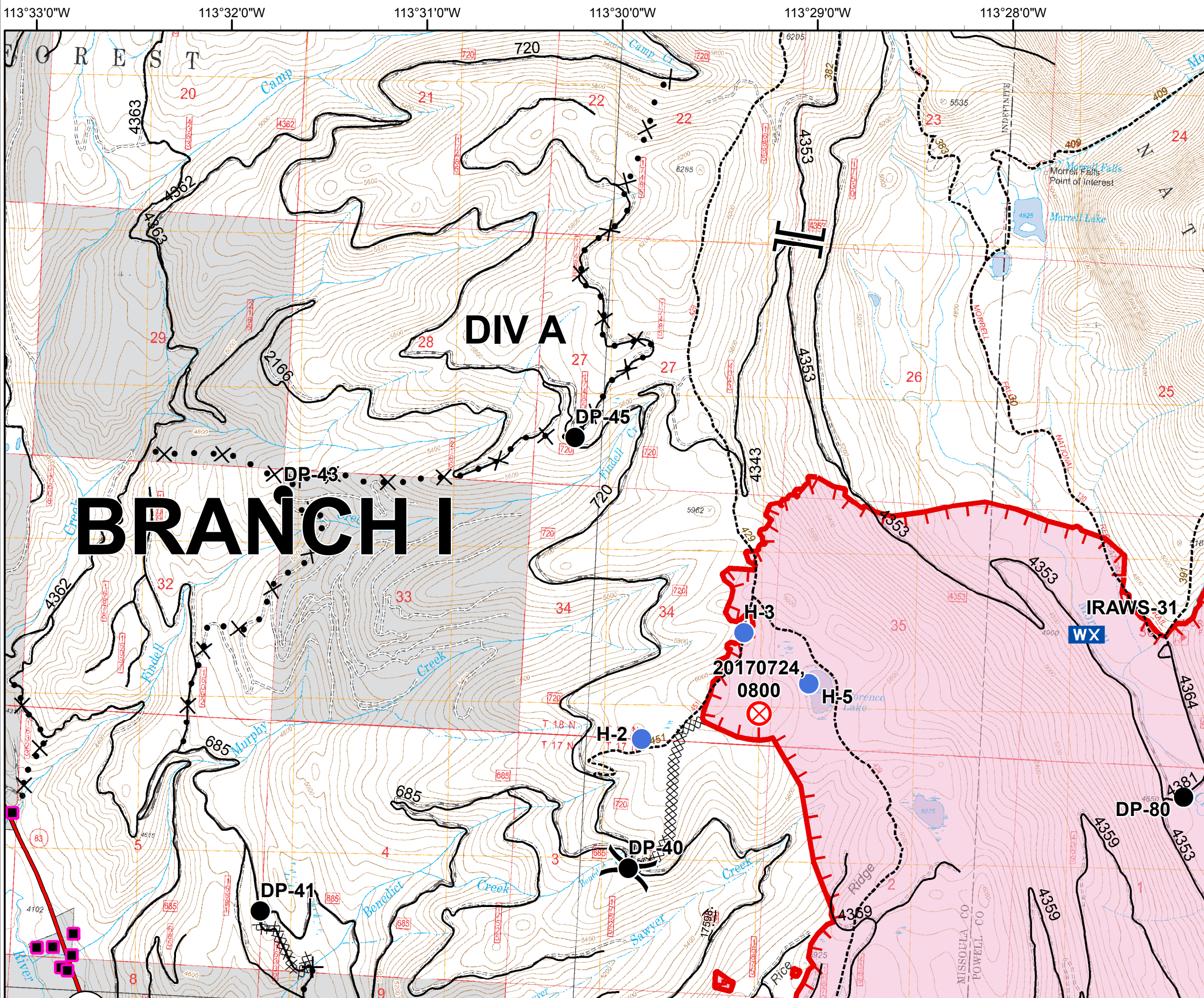
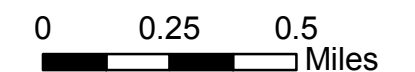
Completed Dozer Line



Proposed Dozer Line



Fire Area



BRANCH I

DIV A

IRAWS-31

20170724,
0800

DP-43

DP-45

DP-40

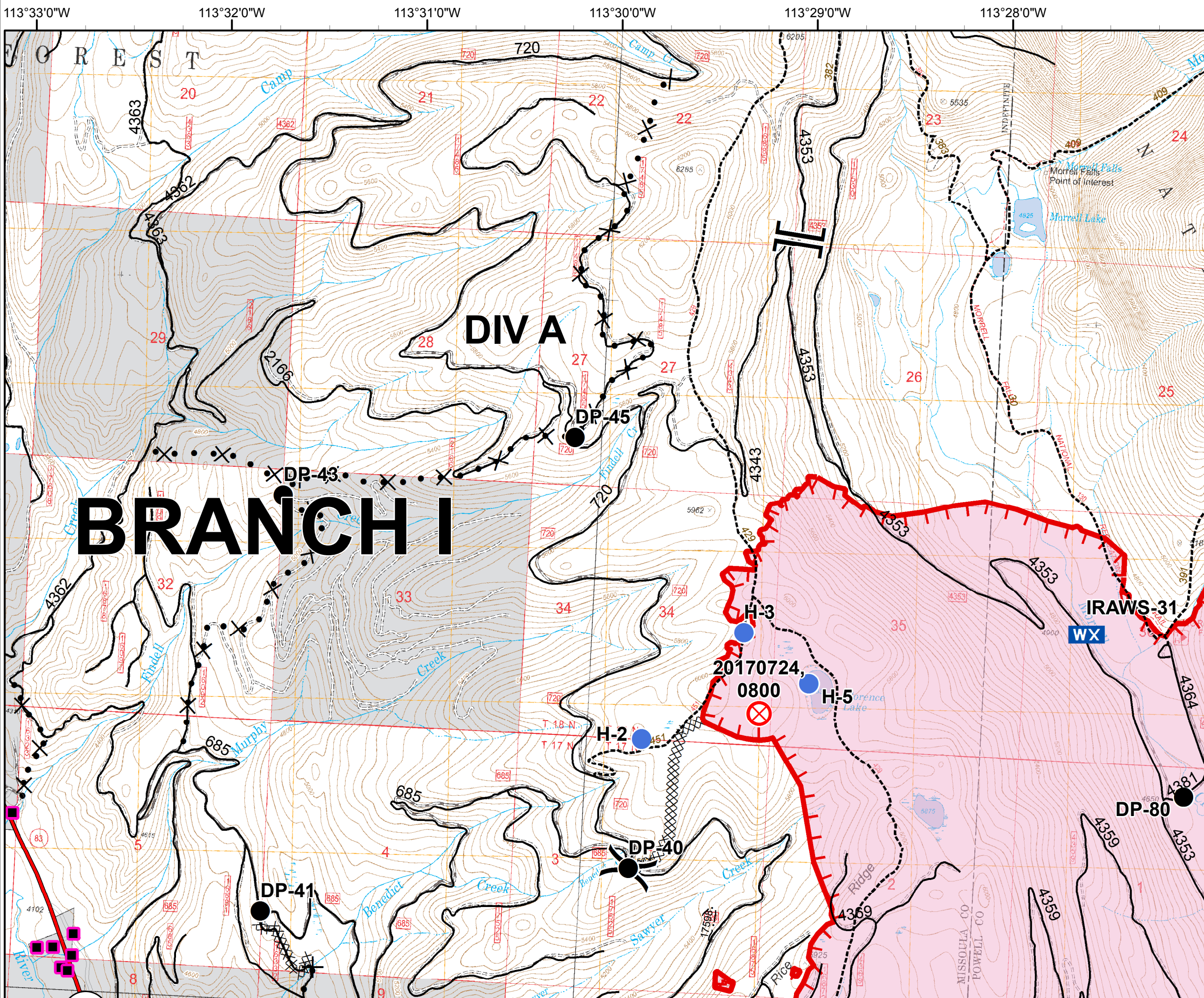
DP-41

H-2

H-3

H-5

DP-80



Rice Ridge Fire

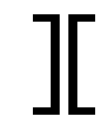
MT-LNF-001464

OPS DIV Map

August 10, 2017

10,194 Acres (Ops Flight 8/9/17 @ 2100)

DIV M - North



Branch



Division



Structures



Drop Point



Fire Origin



Helispot



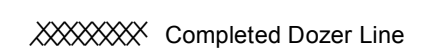
Mobile Weather Unit



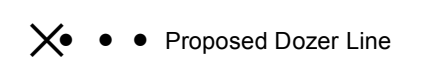
Water Source



Uncontrolled Fire Edge



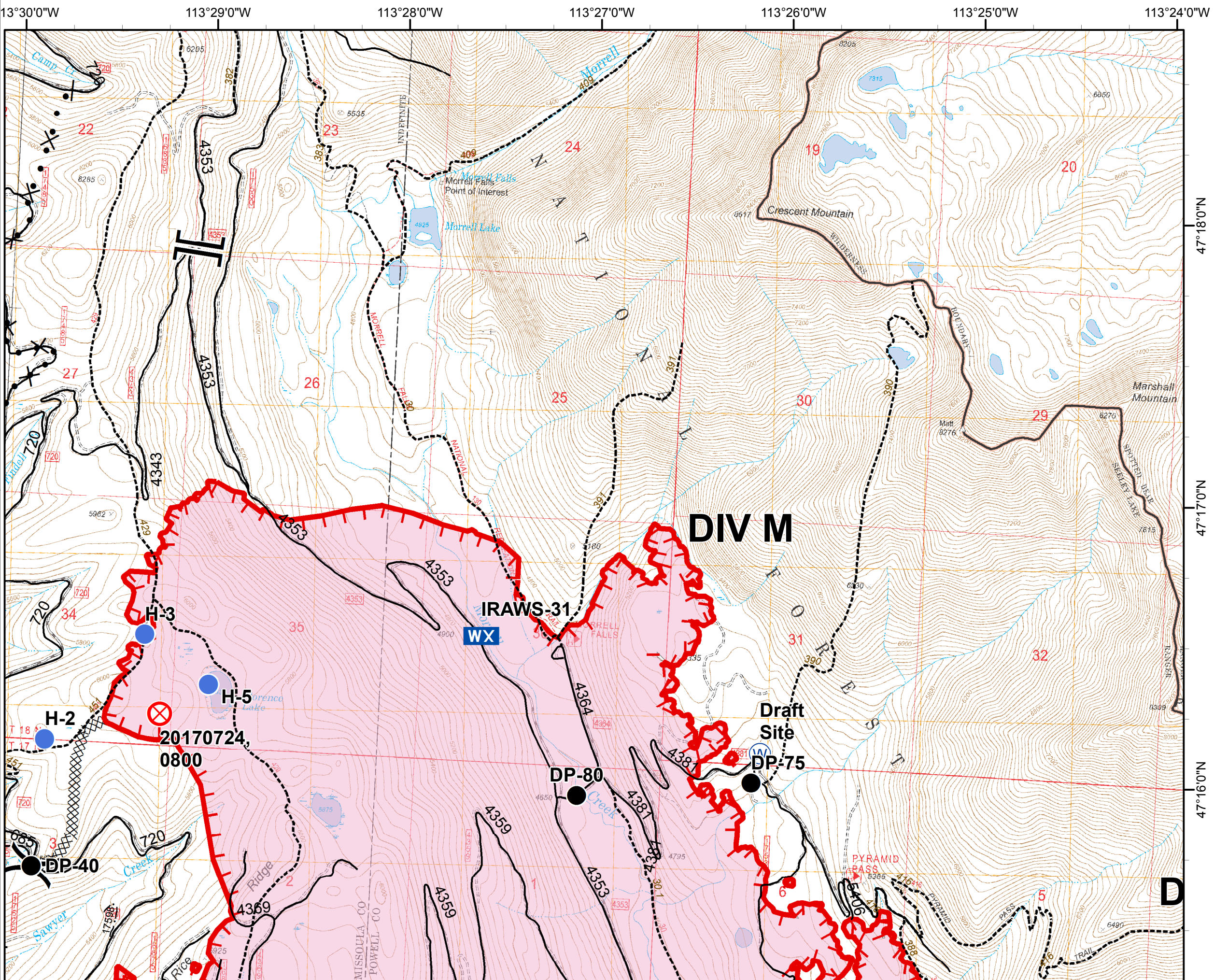
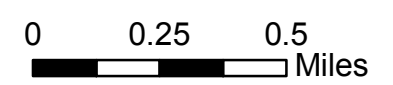
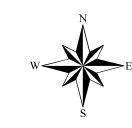
Completed Dozer Line



Proposed Dozer Line



Fire Area



Rice Ridge Fire

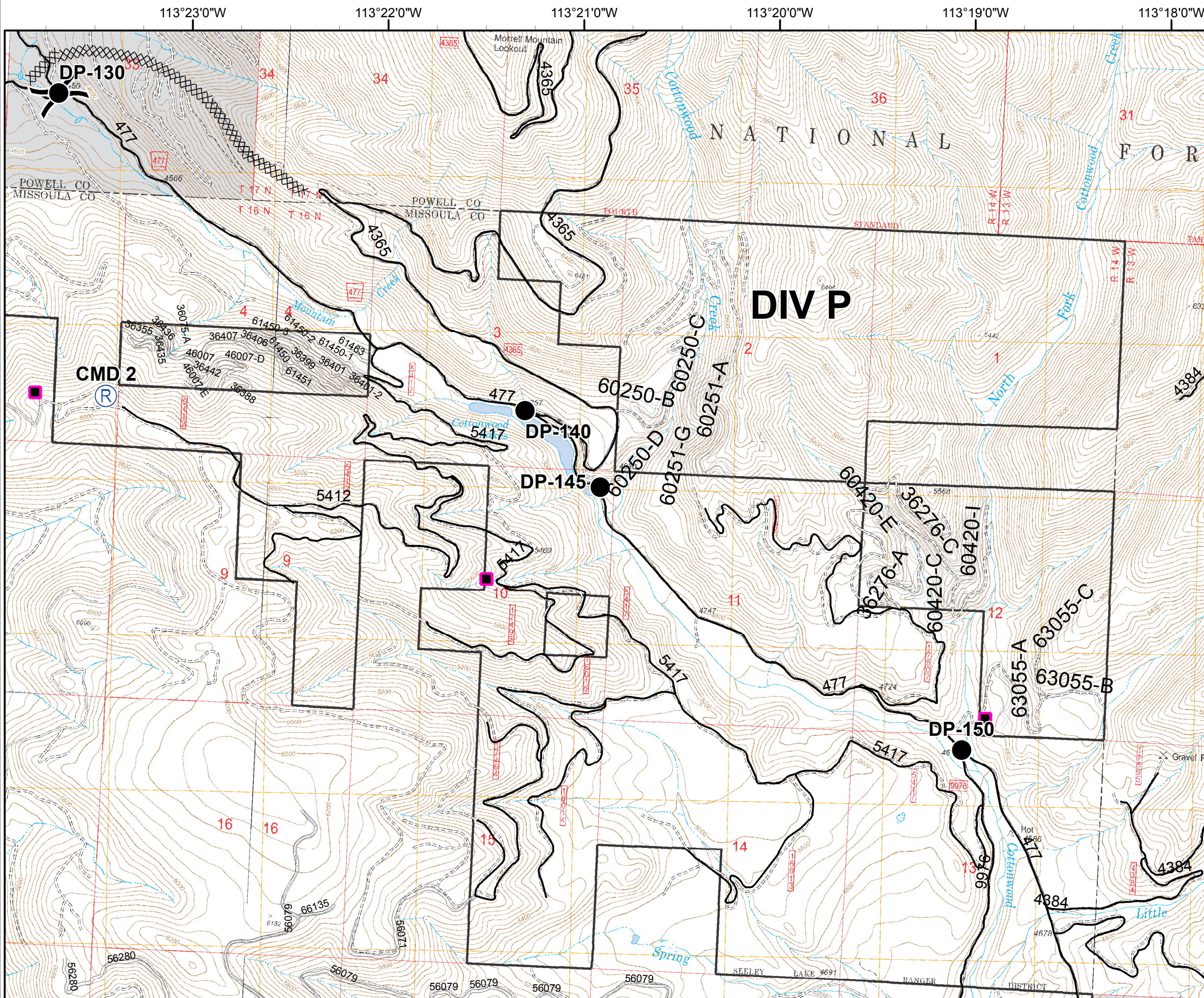
MT-LNF-001464







OPS DIV Map

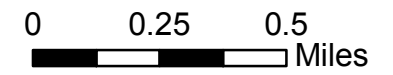
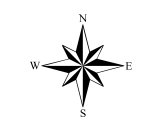
August 10, 2017

10,194 Acres (Ops Flight 8/9/17 @ 2100)

DIV P



-  Division
-  Structures
-  Drop Point
-  Repeater
-  Completed Dozer Line
-  Fire Area



Rice Ridge Fire

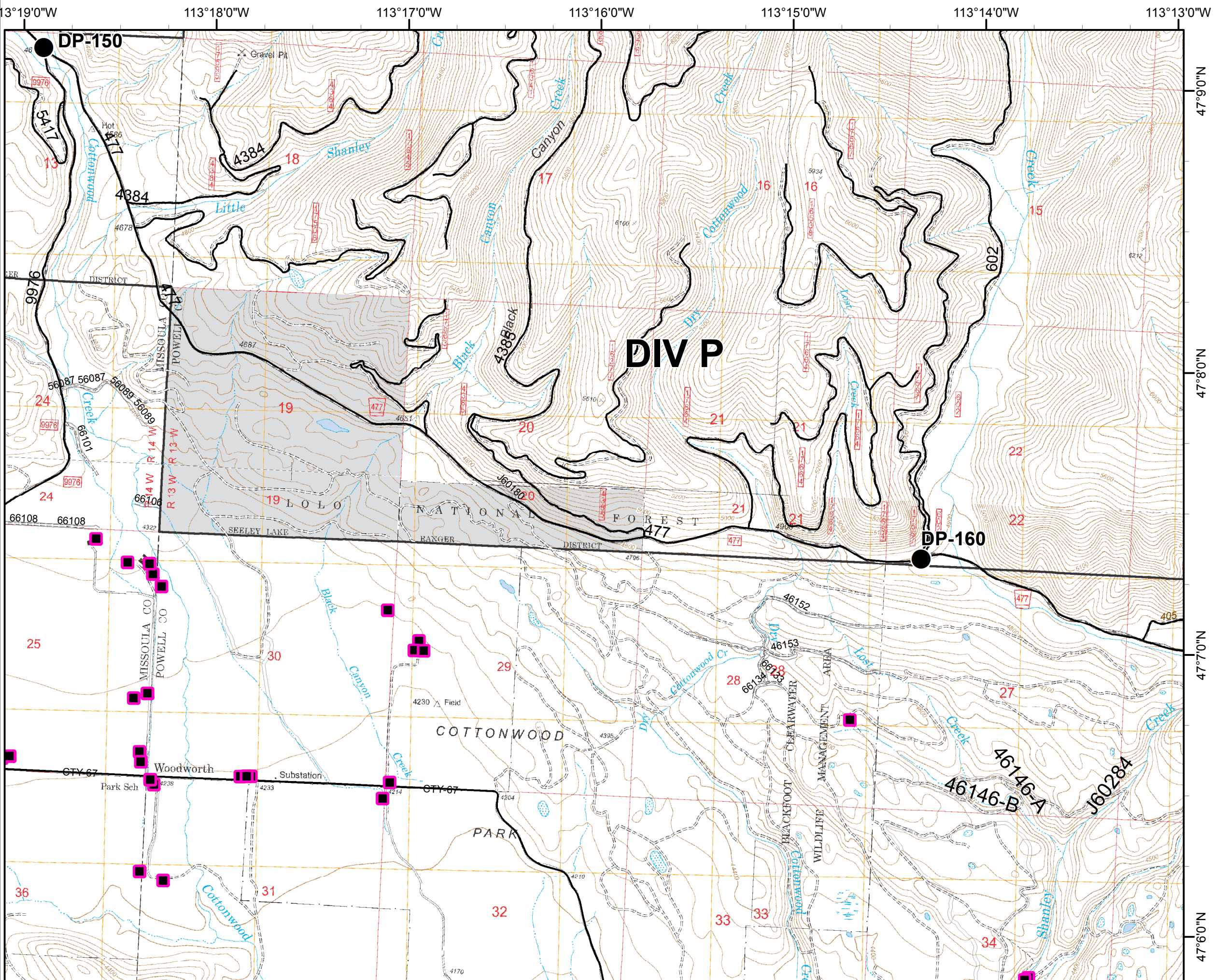
MT-LNF-001464

OPS DIV Map

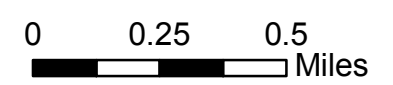
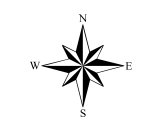
August 10, 2017

10,194 Acres (Ops Flight 8/9/17 @ 2100)

DIV P



- Structures
- Drop Point
- Fire Area



113°13'0"W 113°12'0"W 113°11'0"W 113°10'0"W 113°9'0"W 113°8'0"W

Rice Ridge Fire

MT-LNF-001464

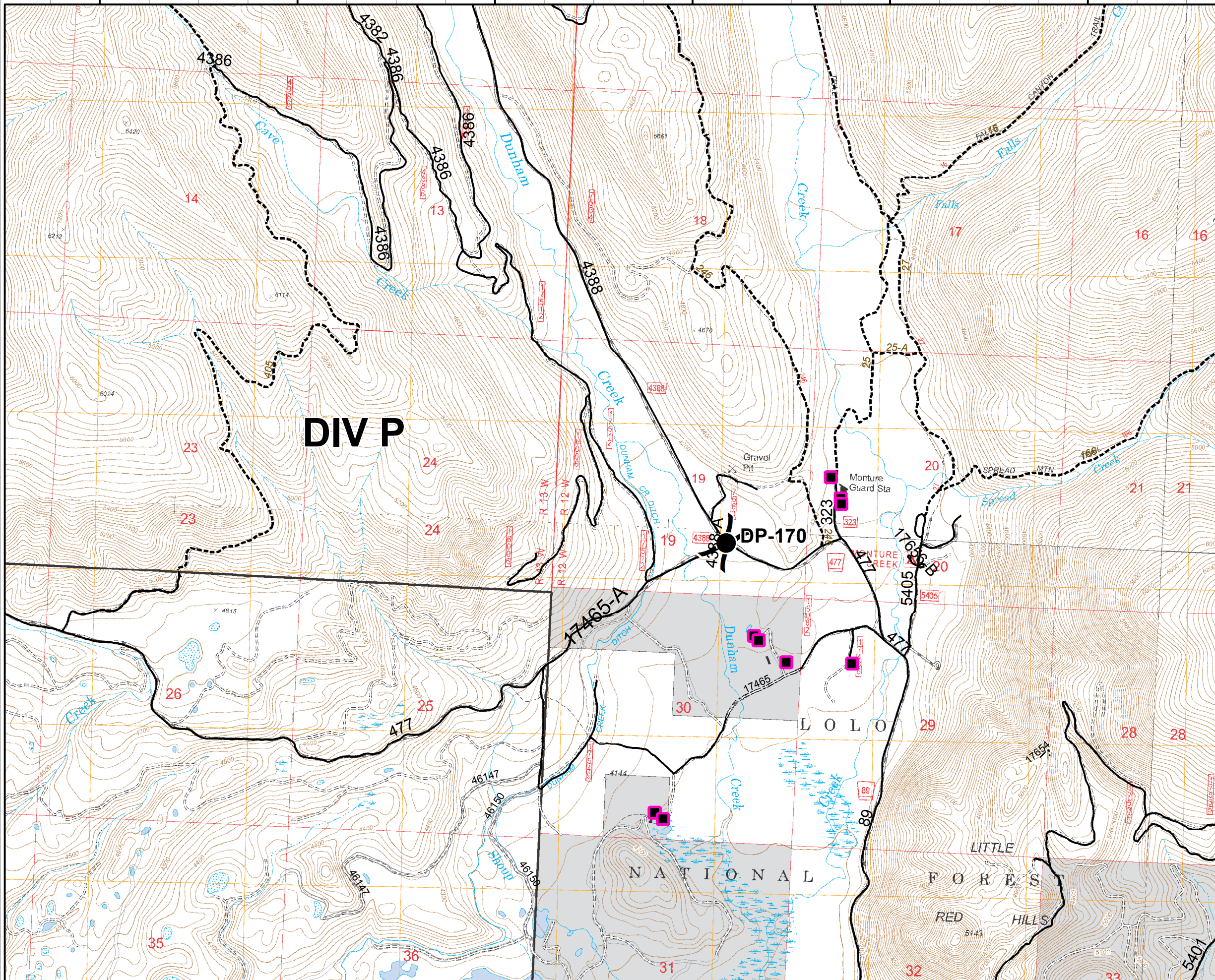
OPS DIV Map

August 10, 2017

10,194 Acres (Ops Flight 8/9/17 @ 2100)





DIV P

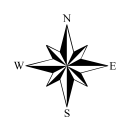
47°9'0"N
47°8'0"N
47°7'0"N



DIV P

DP-170

-  Division
-  Structures
-  Drop Point
-  Fire Area



0 0.25 0.5 Miles