

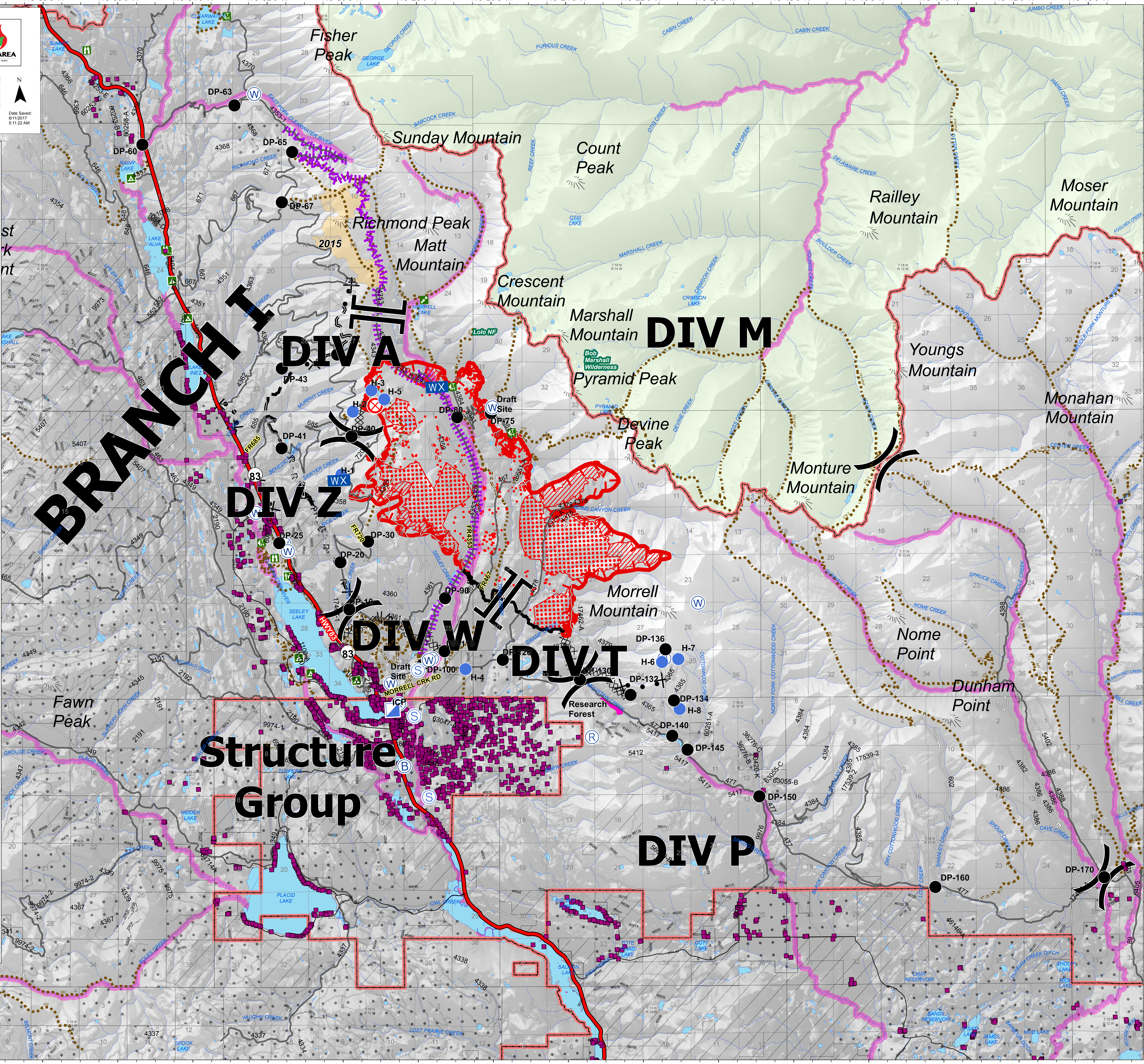
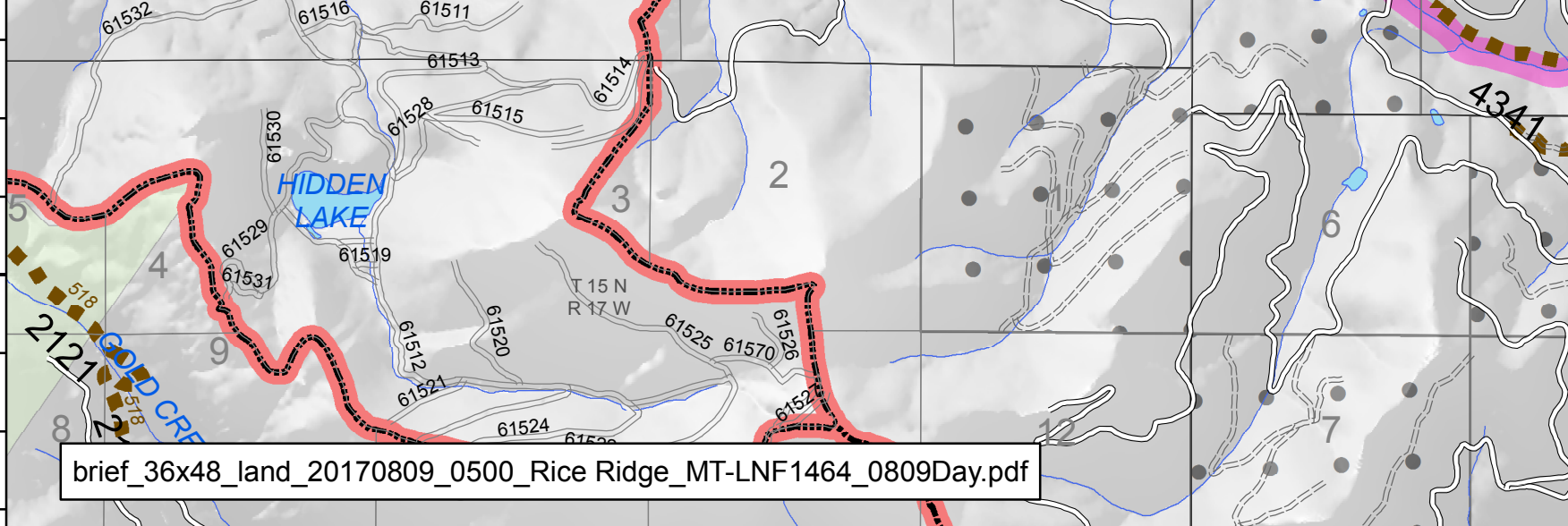
Briefing Map RICE RIDGE FIRE

MT-LNF-001464
August 11, 2017
10,194 Acres (Ops Flight 8/9/17 @ 2100)



Date Saved: 8/11/2017 5:11:22 AM
1:40,000

- Branch
- Division
- Drop Point
- Fire Origin
- Helispot
- Incident Base
- Incident Command Post
- Mobile Weather Unit
- Repeater
- Staging Area
- Water Source
- Campground
- Lookout
- Point of Interest
- Ranger Station
- Trailhead
- Viewing Area
- Uncontrolled Fire Edge
- Completed Dozer Line
- Completed Line
- R - R - Road as Completed Line
- Line Break Completed
- Planned Fire Line
- Proposed Dozer Line
- IR Isolated Heat Source (08/08/17 - 2250)
- IR Scattered Heat (08/08/17 - 2250)
- IR Intense Heat (08/08/17 - 2250)
- Research Forest
- Administrative Boundary
- Great Divide Trail
- Wilderness Area
- Ownership
 - Private
 - State of Montana



113°46'0"W 113°44'0"W 113°42'0"W 113°40'0"W 113°38'0"W 113°36'0"W 113°34'0"W 113°32'0"W 113°30'0"W 113°28'0"W 113°26'0"W 113°24'0"W 113°22'0"W 113°20'0"W 113°18'0"W 113°16'0"W 113°14'0"W 113°12'0"W 113°10'0"W