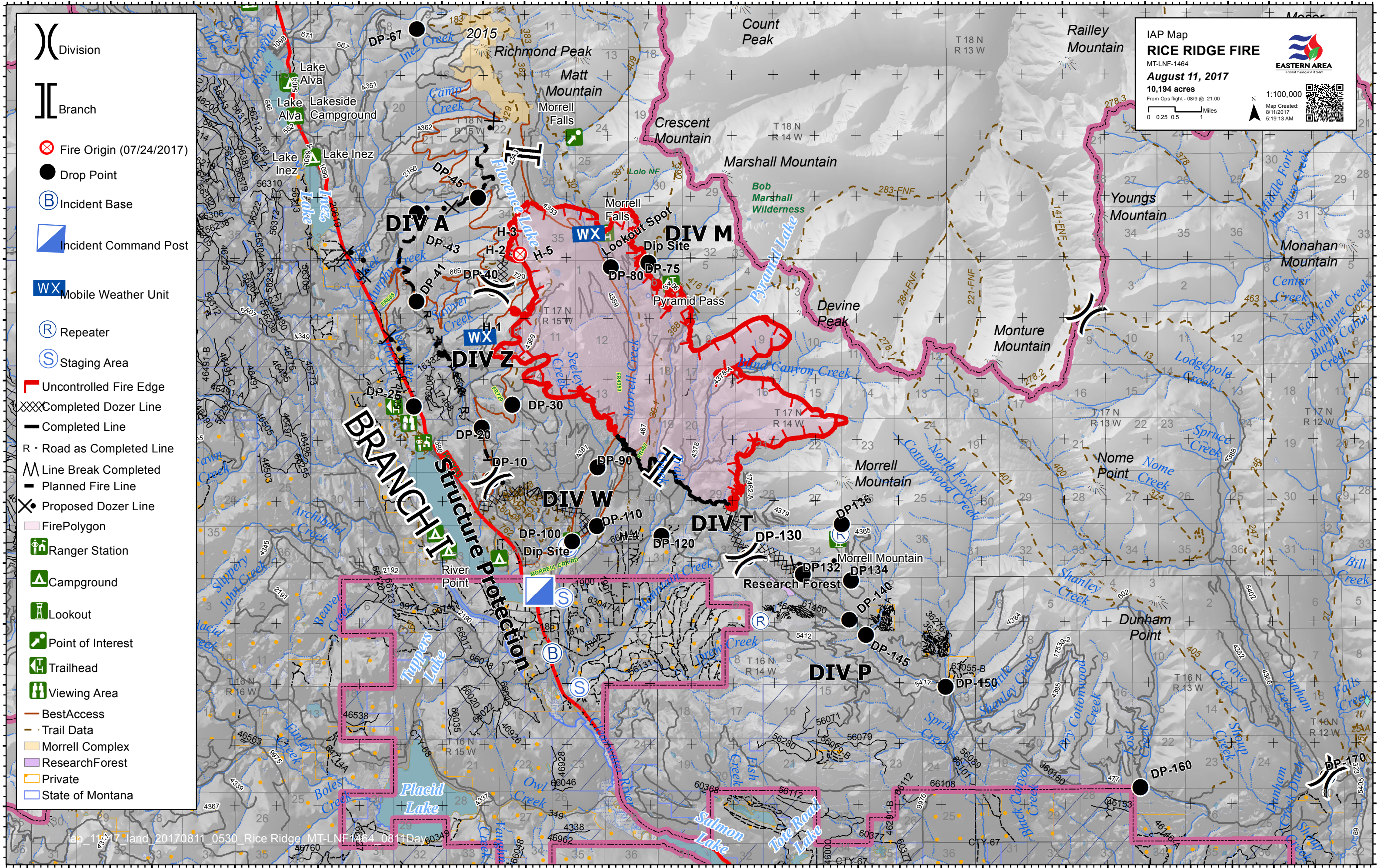


113°41'0"W 113°39'0"W 113°37'0"W 113°35'0"W 113°33'0"W 113°31'0"W 113°29'0"W 113°27'0"W 113°25'0"W 113°23'0"W 113°21'0"W 113°19'0"W 113°17'0"W 113°15'0"W 113°13'0"W 113°11'0"W 113°9'0"W



IAP Map
RICE RIDGE FIRE
 MT-LNF-1464
August 11, 2017
 10,194 acres
 From Ops flight - 0819 @ 21:00

EASTERN AREA
 incident management system

Scale: 1:100,000
 Map Created: 8/11/2017 5:19:13 AM

- () Division
- || Branch
- ⊗ Fire Origin (07/24/2017)
- Drop Point
- (B) Incident Base
- ▣ Incident Command Post
- WX Mobile Weather Unit
- (R) Repeater
- (S) Staging Area
- Uncontrolled Fire Edge
- XXX Completed Dozer Line
- Completed Line
- R - Road as Completed Line
- Line Break Completed
- Planned Fire Line
- ✕ Proposed Dozer Line
- FirePolygon
- Ranger Station
- Campground
- Lookout
- Point of Interest
- Trailhead
- Viewing Area
- BestAccess
- Trail Data
- Morrell Complex
- ResearchForest
- Private
- State of Montana

113°41'0"W 113°39'0"W 113°37'0"W 113°35'0"W 113°33'0"W 113°31'0"W 113°29'0"W 113°27'0"W 113°25'0"W 113°23'0"W 113°21'0"W 113°19'0"W 113°17'0"W 113°15'0"W 113°13'0"W 113°11'0"W 113°9'0"W