

113°27'0"W 113°26'0"W 113°25'0"W 113°24'0"W 113°23'0"W 113°22'0"W 113°21'0"W

Rice Ridge Fire

MT-LNF-001464

OPS DIV Map

August 11, 2017

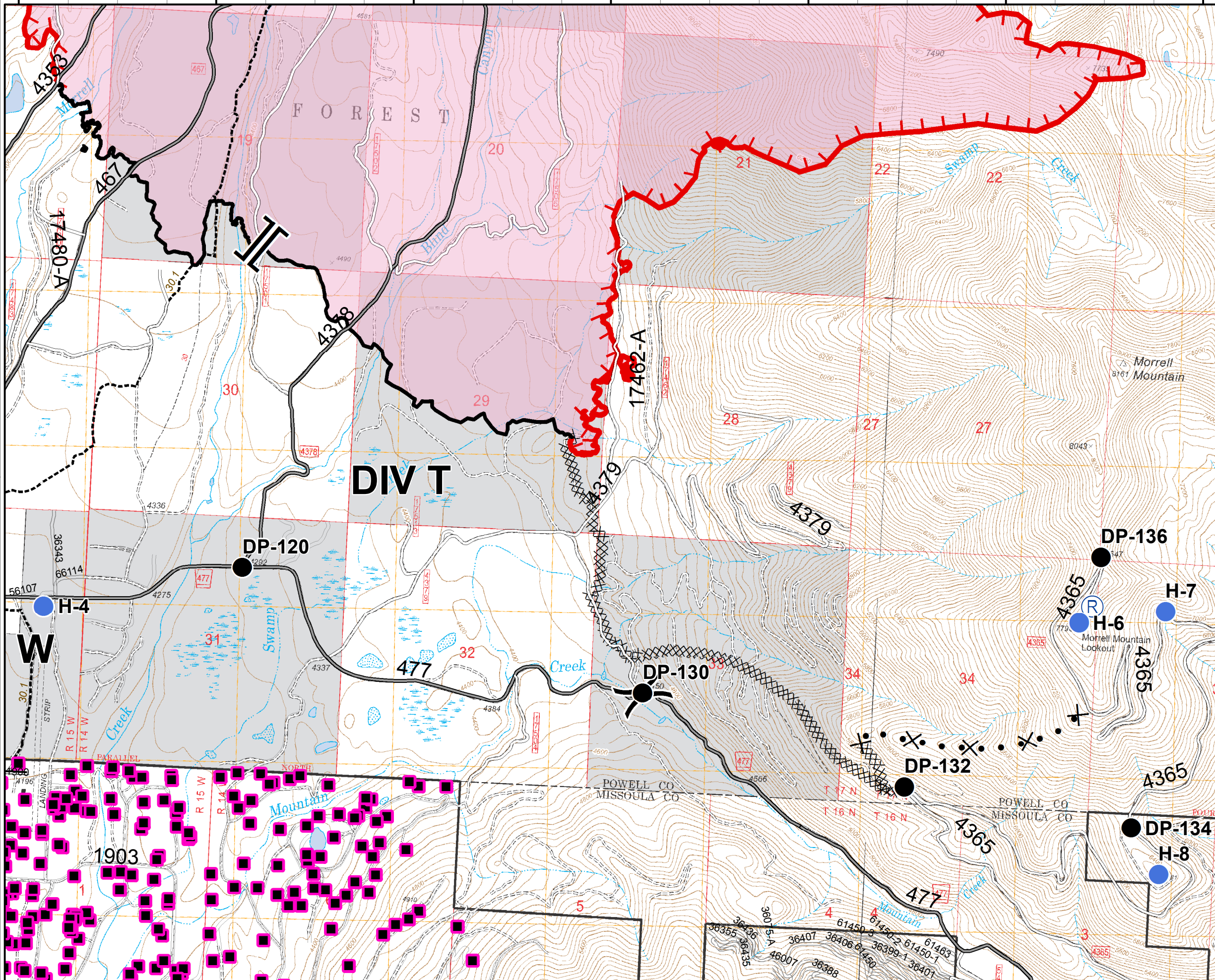
10,194 Acres (Ops Flight 8/9/17 @ 2100)












DIV T

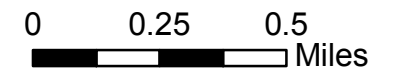
47°13'0"N

47°12'0"N

47°11'0"N



-  Structures
-  Drop Point
-  Helispot
-  Repeater
-  Branch
-  Division
-  Uncontrolled Fire Edge
-  Completed Dozer Line
-  Completed Line
-  Proposed Dozer Line
-  Fire Area



Rice Ridge Fire













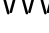

MT-LNF-001464

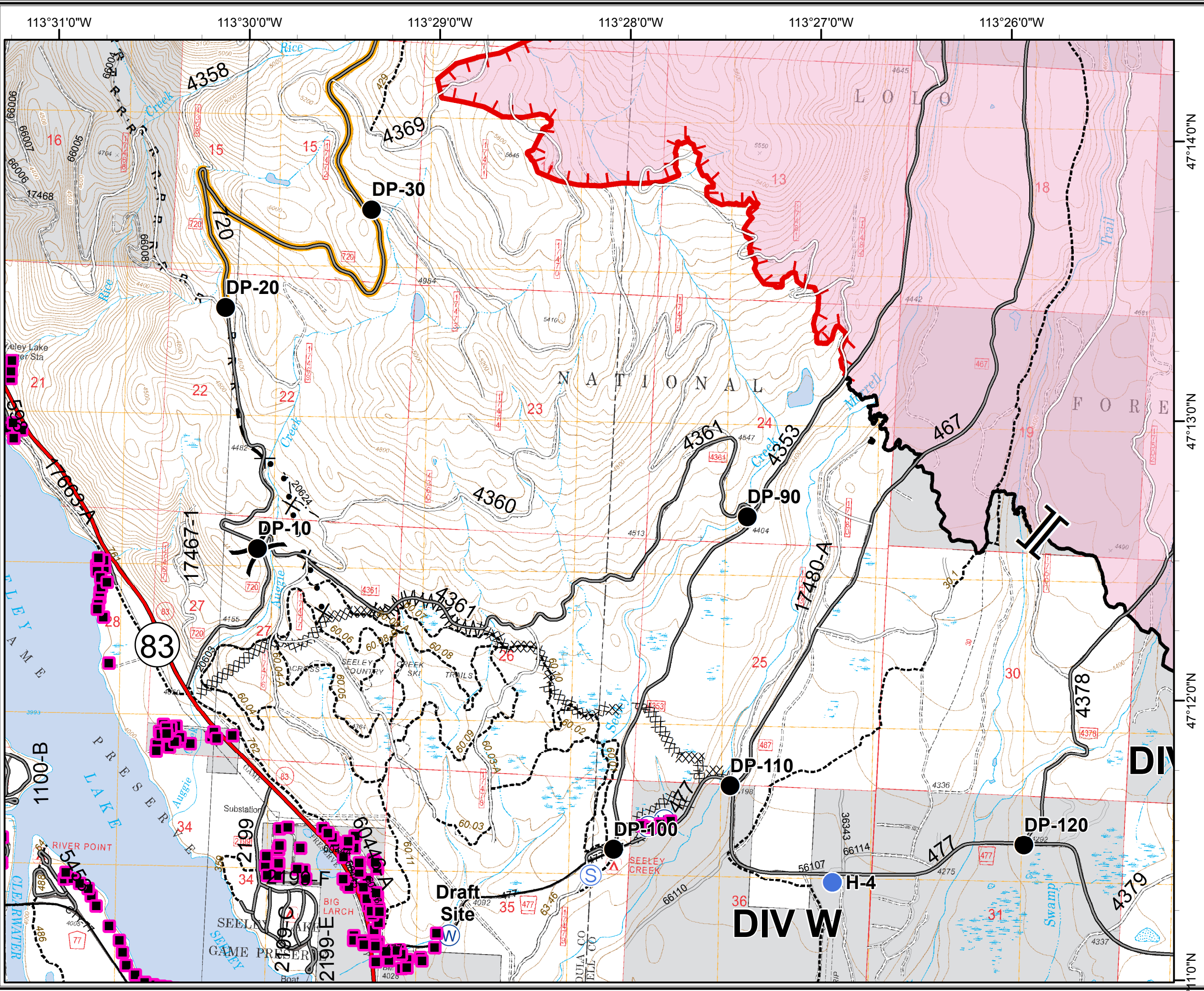
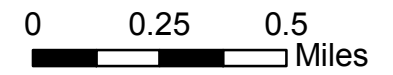
OPS DIV Map

August 11, 2017

10,194 Acres (Ops Flight 8/9/17 @ 2100)

DIV W

-  Structures
-  Drop Point
-  Helispot
-  Staging Area
-  Water Source
-  Branch
-  Division
-  Road Closure (Need Div Sup Approval)
-  Uncontrolled Fire Edge
-  Completed Dozer Line
-  Completed Line
-  Planned Fire Line
-  Proposed Dozer Line
-  Fire Area



Rice Ridge Fire

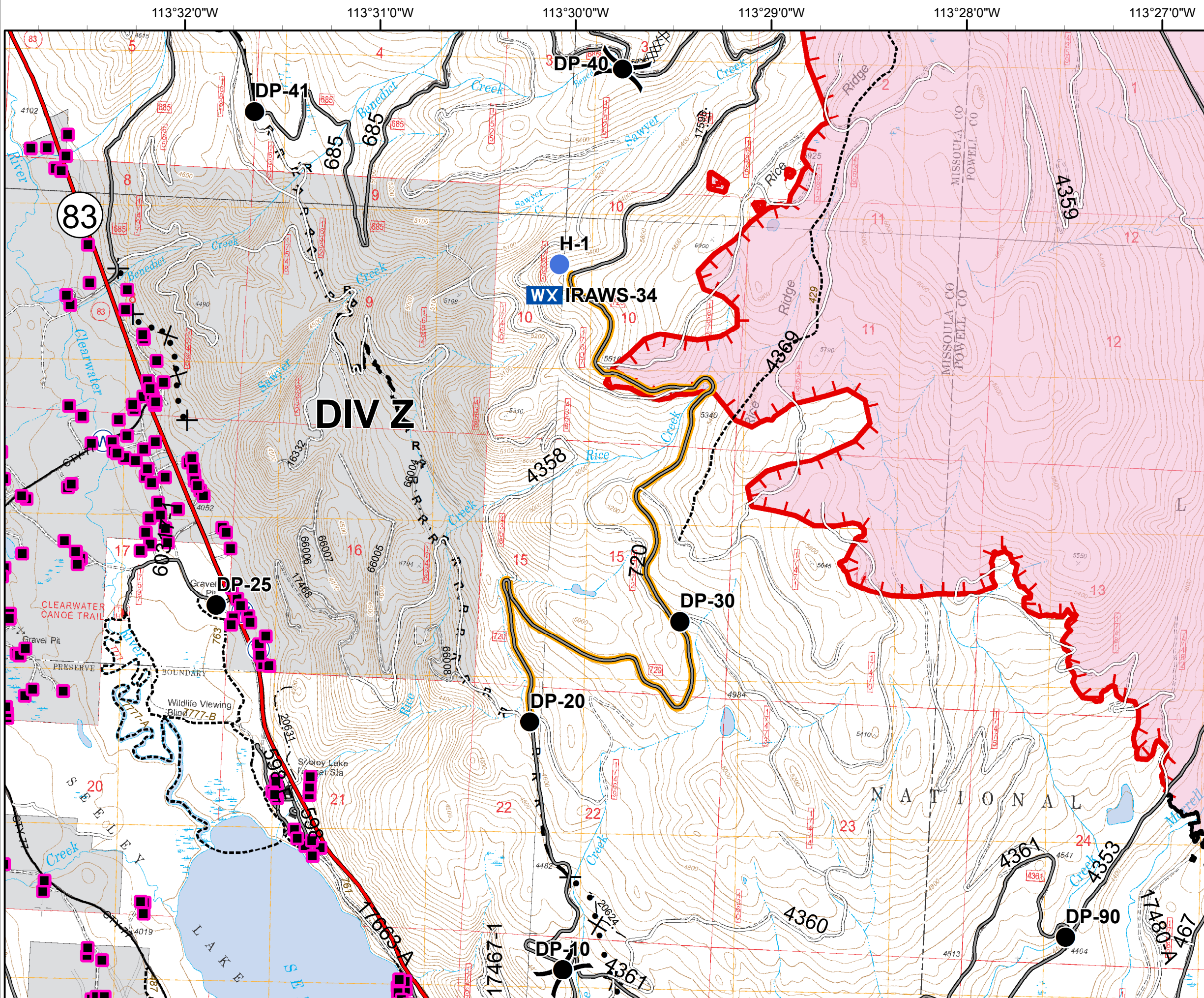
MT-LNF-001464

OPS DIV Map

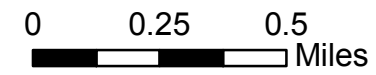
August 11, 2017

10,194 Acres (Ops Flight 8/9/17 @ 2100)

DIV Z



-  Structures
-  Drop Point
-  Helispot
-  Mobile Weather Unit
-  Water Source
-  Division
-  Road Closure (Need Div Sup Approval)
-  Uncontrolled Fire Edge
-  Completed Dozer Line
-  Completed Line
-  Road as Completed Line
-  Planned Fire Line
-  Proposed Dozer Line
-  Fire Area



Rice Ridge Fire

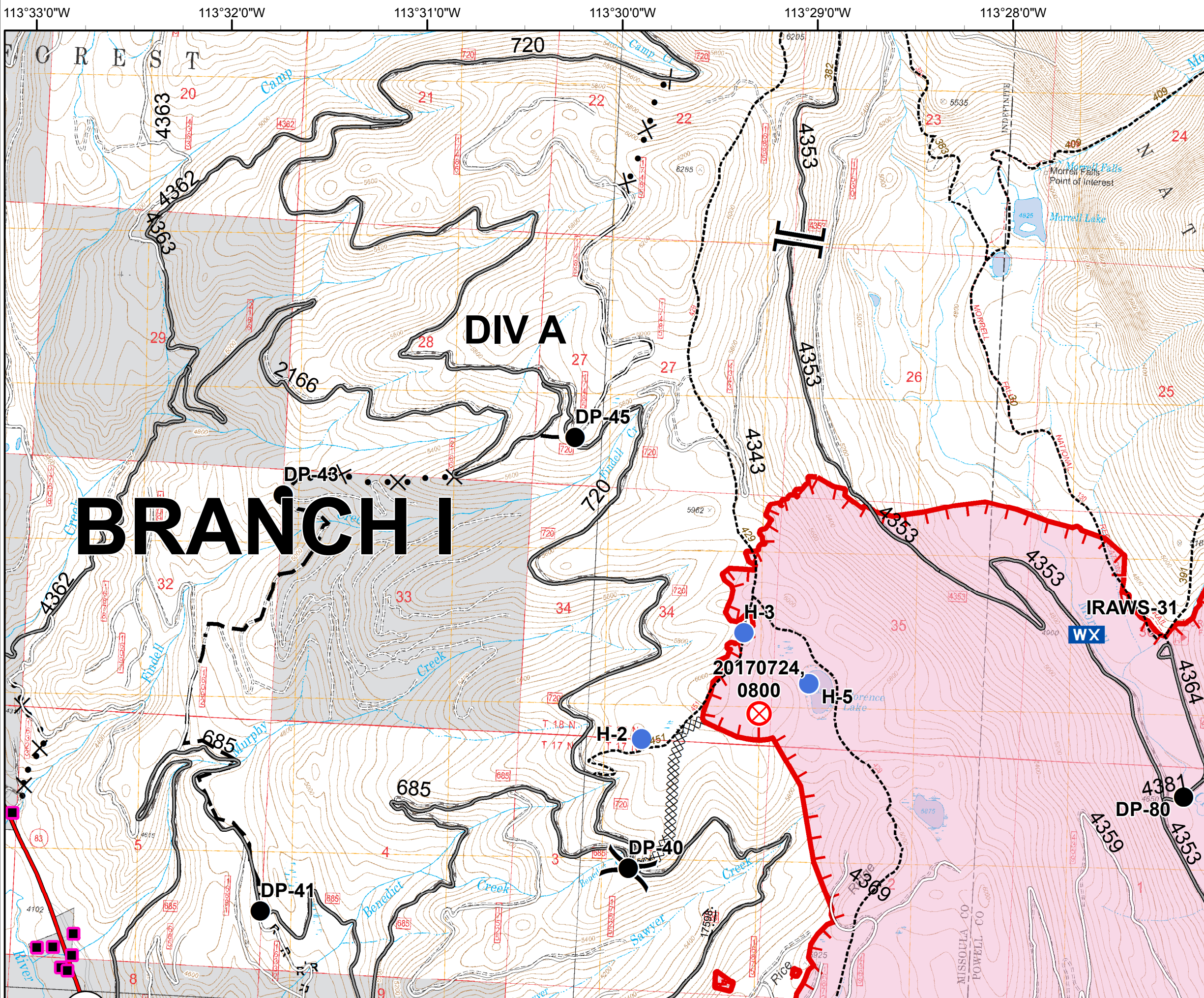
MT-LNF-001464

OPS DIV Map














August 11, 2017

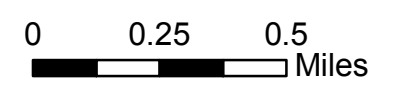
10,194 Acres (Ops Flight 8/9/17 @ 2100)

DIV A



BRANCH I

-  Structures
-  Drop Point
-  Fire Origin
-  Helispot
-  Mobile Weather Unit
-  Branch
-  Division
-  Uncontrolled Fire Edge
-  Completed Dozer Line
-  Road as Completed Line
-  Planned Fire Line
-  Proposed Dozer Line
-  Fire Area



Rice Ridge Fire

MT-LNF-001464

OPS DIV Map

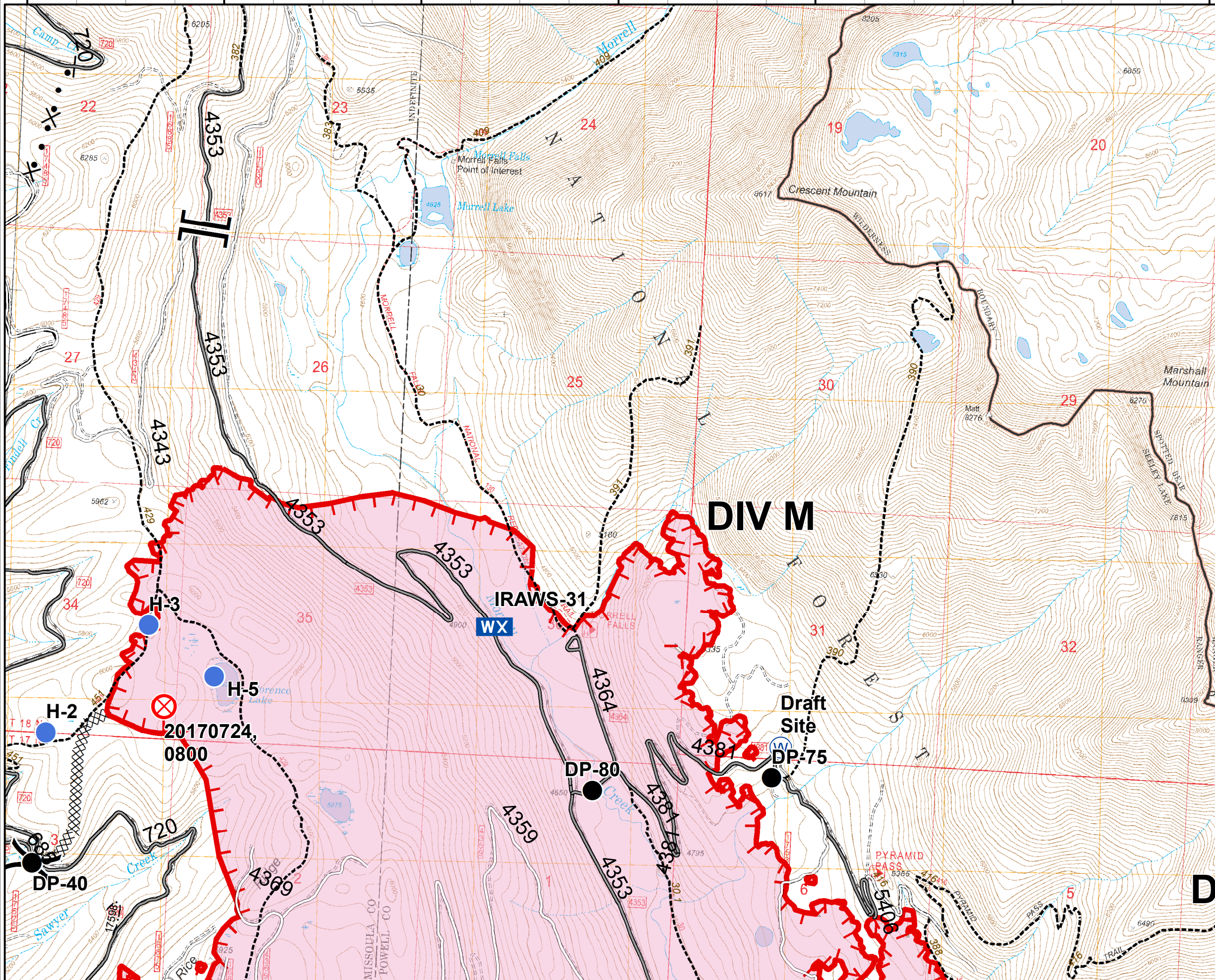
August 11, 2017

10,194 Acres (Ops Flight 8/9/17 @ 2100)

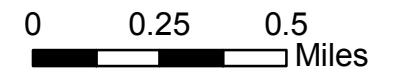
DIV M - North

13°30'0"W 113°29'0"W 113°28'0"W 113°27'0"W 113°26'0"W 113°25'0"W 113°24'0"W

47°18'0"N
47°17'0"N
47°16'0"N



- Structures
- Drop Point
- ⊗ Fire Origin
- Helispot
- WX Mobile Weather Unit
- ⊕ Water Source
- || Branch
-) Division
- ▬ Uncontrolled Fire Edge
- XXXXXX Completed Dozer Line
- - - Planned Fire Line
- ⊗ Proposed Dozer Line
- Fire Area



Rice Ridge Fire

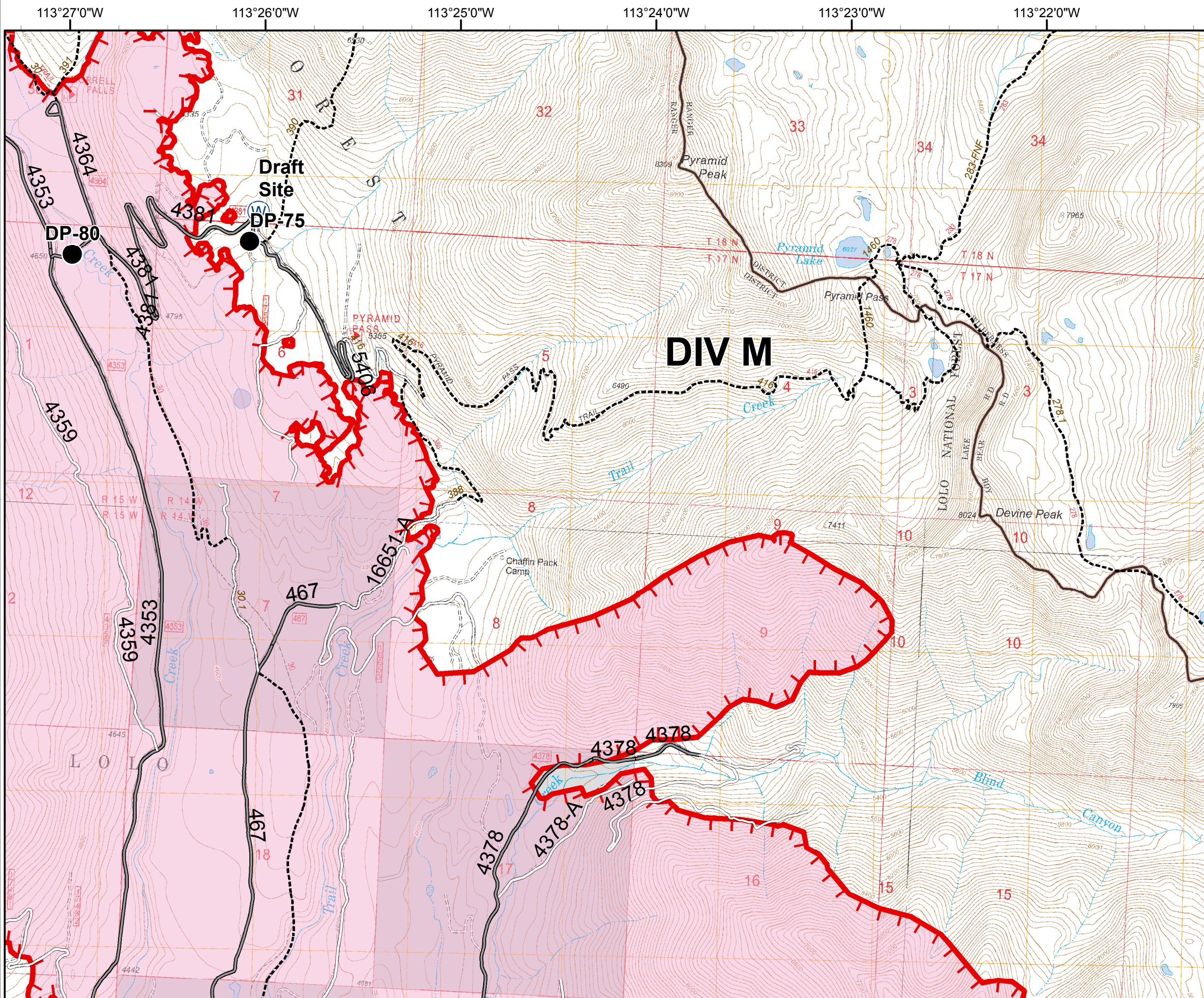
MT-LNF-001464

OPS DIV Map

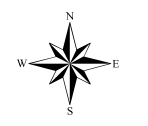
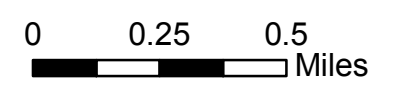
August 11, 2017

10,194 Acres (Ops Flight 8/9/17 @ 2100)

DIV M - South



- Structures
- Drop Point
- Ⓜ Water Source
- ▬ Uncontrolled Fire Edge
- Fire Area



Rice Ridge Fire

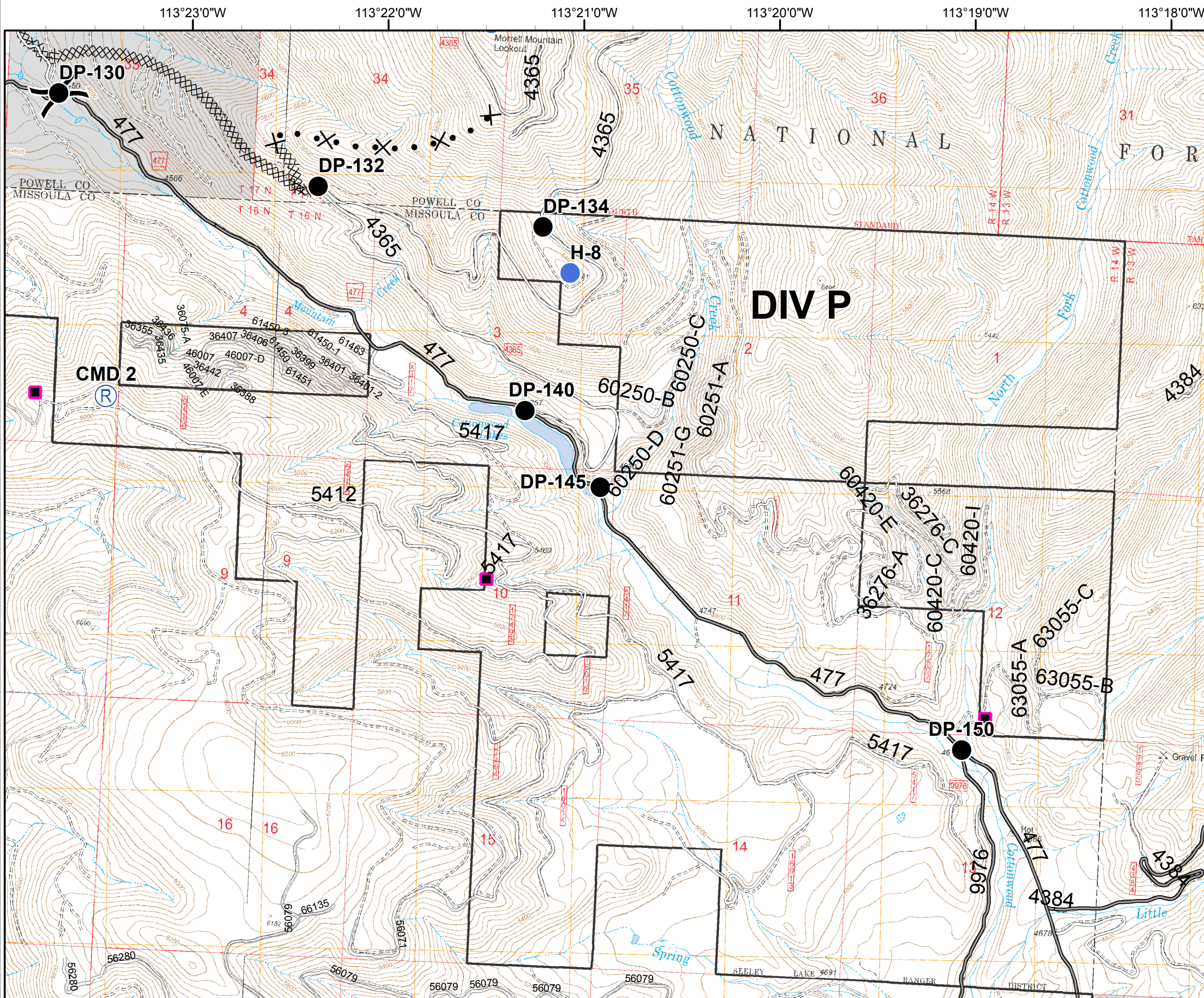
MT-LNF-001464









OPS DIV Map

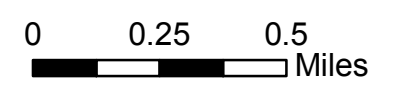
August 11, 2017

10,194 Acres (Ops Flight 8/9/17 @ 2100)

DIV P



-  Structures
-  Drop Point
-  Helispot
-  Repeater
-  Division
-  Completed Dozer Line
-  Proposed Dozer Line
-  Fire Area



Rice Ridge Fire

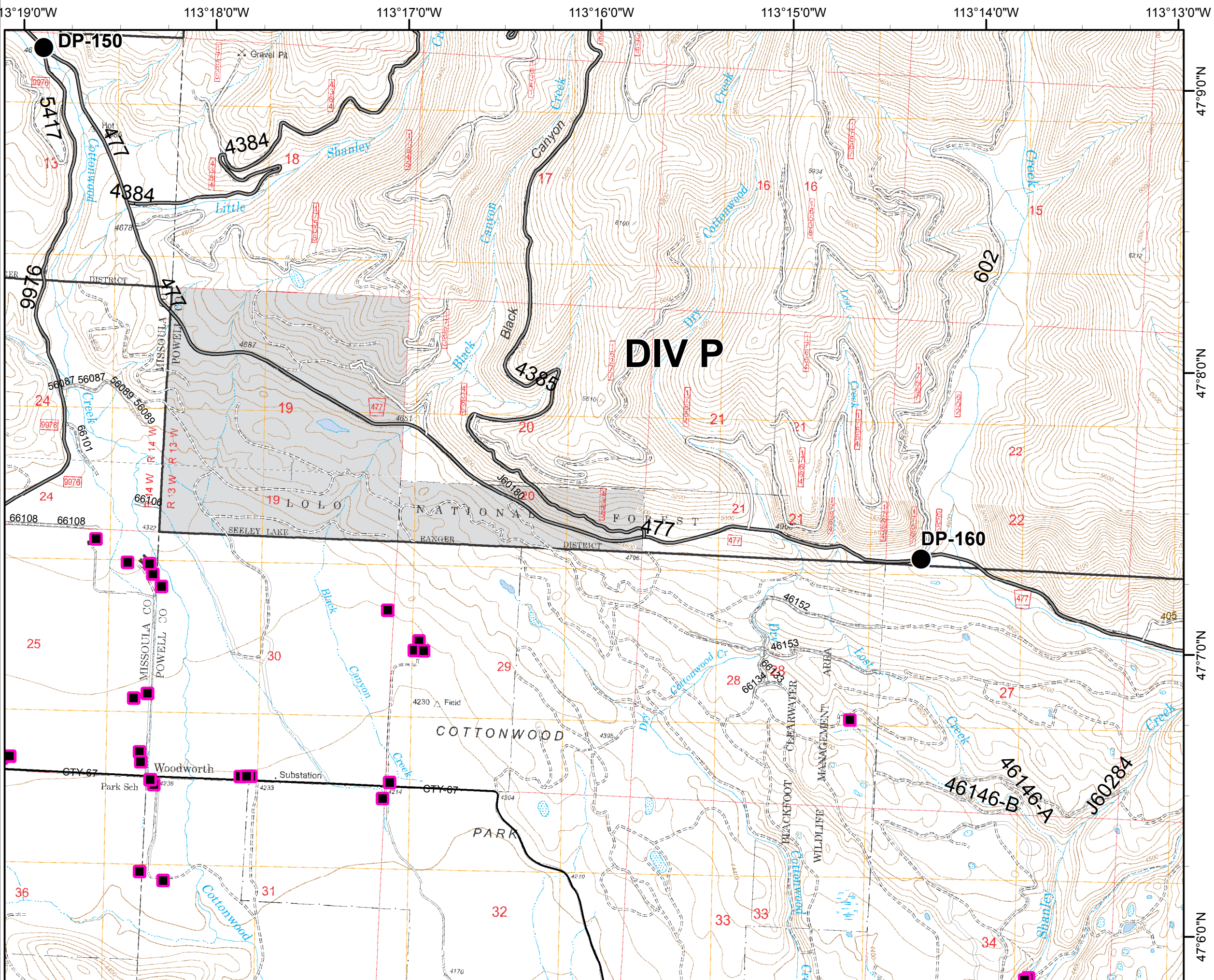
MT-LNF-001464

OPS DIV Map

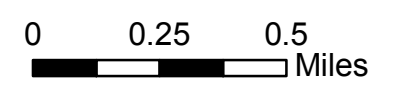
August 11, 2017

10,194 Acres (Ops Flight 8/9/17 @ 2100)

DIV P



- Structures
- Drop Point
- Fire Area



113°13'0"W 113°12'0"W 113°11'0"W 113°10'0"W 113°9'0"W 113°8'0"W

Rice Ridge Fire

MT-LNF-001464

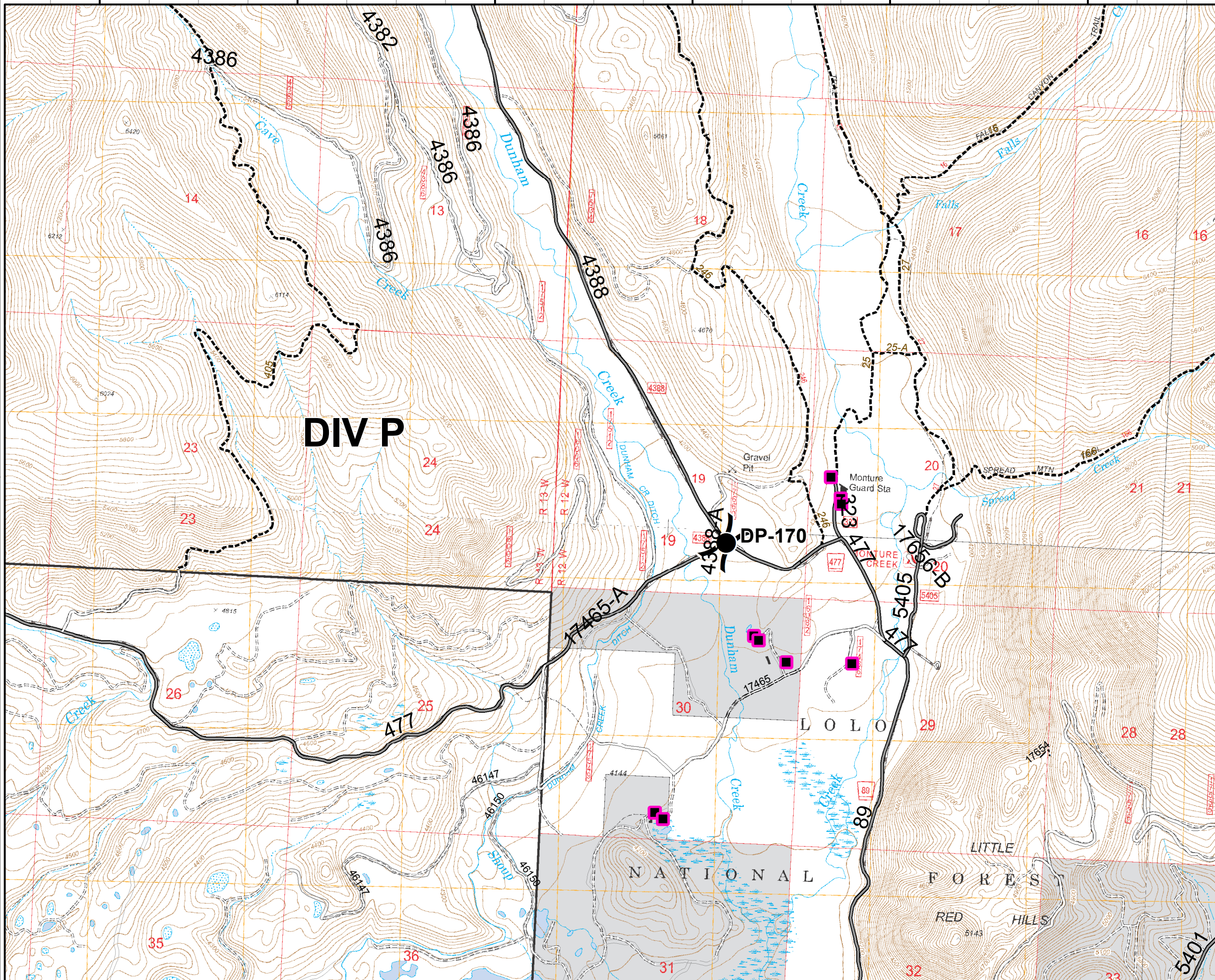
OPS DIV Map

August 11, 2017

10,194 Acres (Ops Flight 8/9/17 @ 2100)

DIV P

47°9'0"N
47°8'0"N
47°7'0"N



- Structures
- Drop Point
- Division
- Fire Area

