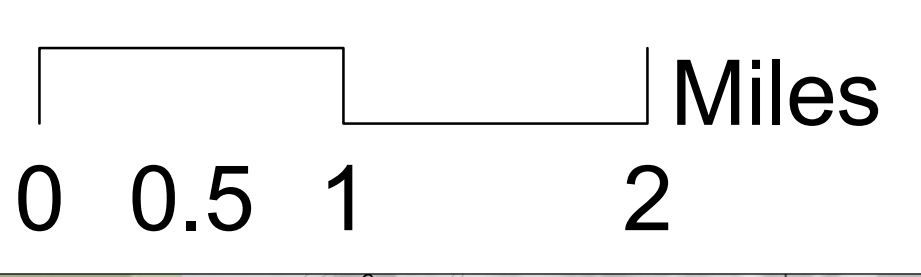


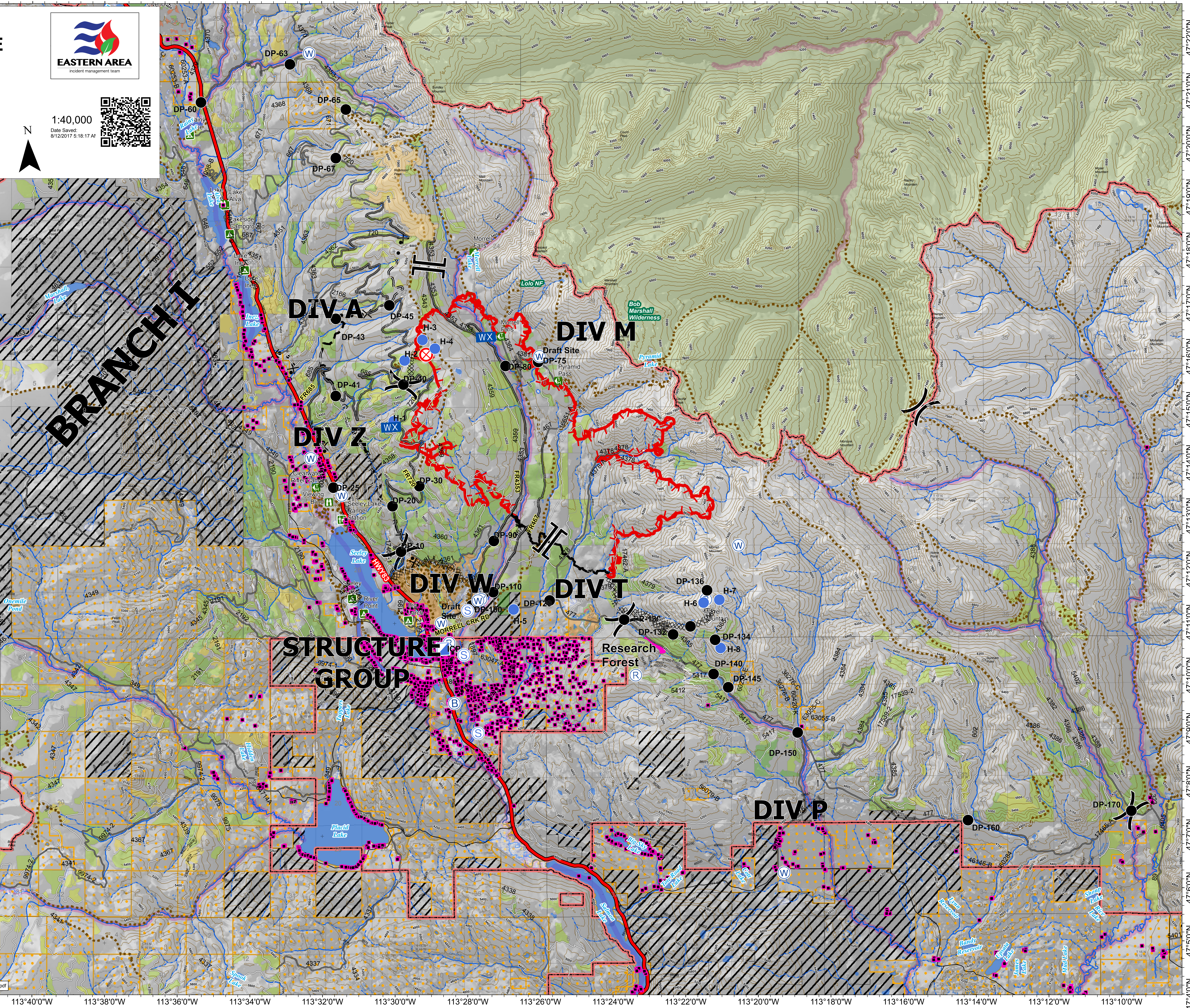
Ops Map
RICE RIDGE FIRE
 MT-LNF-1464
August 12, 2017
11,051 Acres
(IR 8/11/17 @2214)



1:40,000
 Date Saved: 8/12/2017 5:18:17 AM



- Division
- Branch
- Drop Point
- Fire Origin
- Helispot
- Incident Base
- Incident Command Post
- Mobile Weather Unit
- Repeater
- Staging Area
- Water Source
- Campground
- Lookout
- Point of Interest
- Ranger Station
- Trailhead
- Viewing Area
- Uncontrolled Fire Edge
- Completed Dozer Line
- Completed Line
- Road as Completed Line
- MWW Line Break Completed
- Planned Fire Line
- Proposed Dozer Line
- Research Forest
- Forest Treatments**
- Pre-1950
- 1950 - 1969
- 1970 - 1989
- 1990 - 1999
- 2000 - 2009
- 2012
- 2014
- 2015
- Ownership**
- Private
- State of Montana
- Wilderness Area



113°44'0"W 113°42'0"W 113°40'0"W 113°38'0"W 113°36'0"W 113°34'0"W 113°32'0"W 113°30'0"W 113°28'0"W 113°26'0"W 113°24'0"W 113°22'0"W 113°20'0"W 113°18'0"W 113°16'0"W 113°14'0"W 113°12'0"W 113°10'0"W

47°22'0"N 47°21'0"N 47°20'0"N 47°19'0"N 47°18'0"N 47°17'0"N 47°16'0"N 47°15'0"N 47°14'0"N 47°13'0"N 47°12'0"N 47°11'0"N 47°10'0"N 47°9'0"N 47°8'0"N 47°7'0"N 47°6'0"N 47°5'0"N

47°22'0"N 47°21'0"N 47°20'0"N 47°19'0"N 47°18'0"N 47°17'0"N 47°16'0"N 47°15'0"N 47°14'0"N 47°13'0"N 47°12'0"N 47°11'0"N 47°10'0"N 47°9'0"N 47°8'0"N 47°7'0"N 47°6'0"N 47°5'0"N