

# Rice Ridge Fire

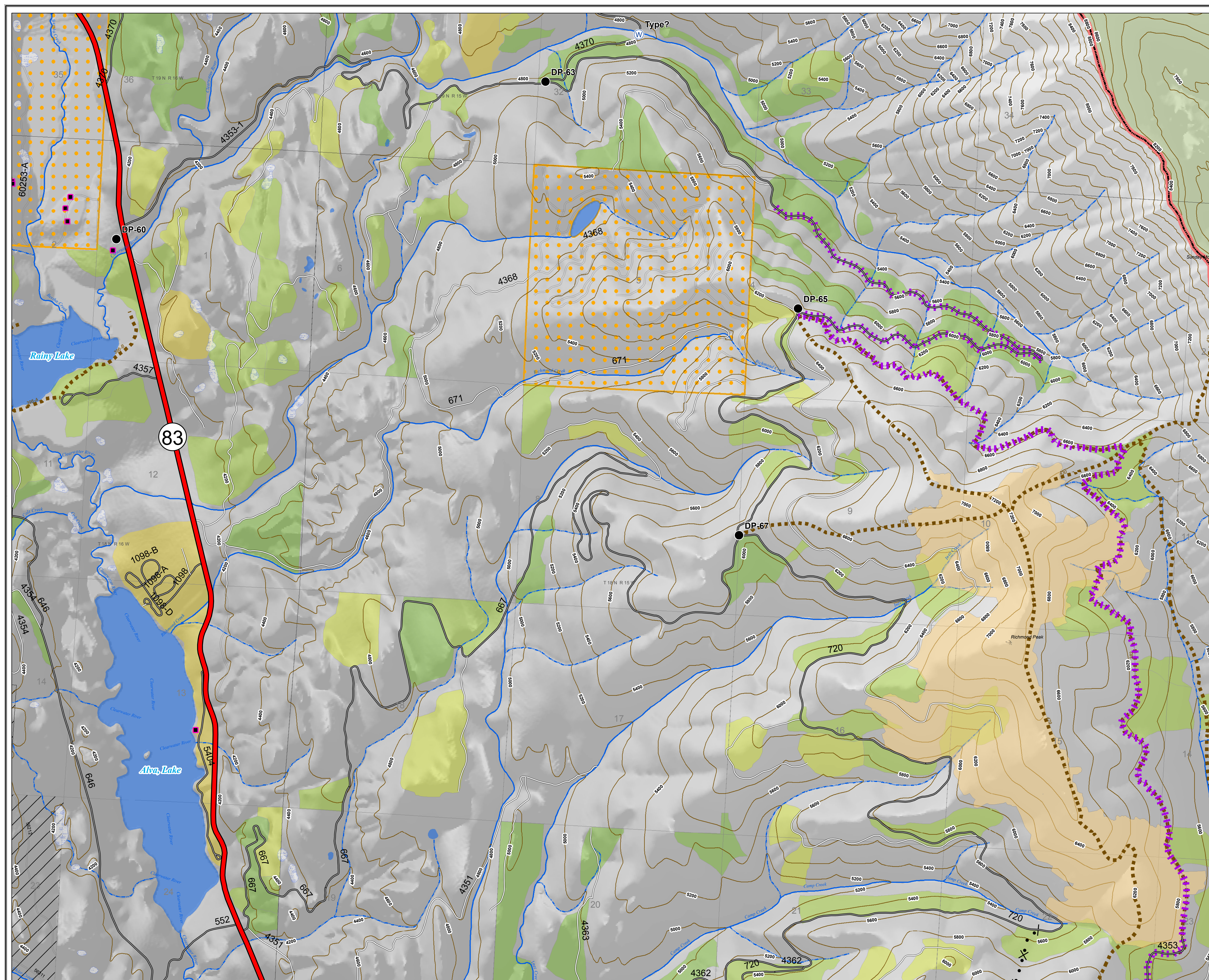
MT-LNF-001464

OPS Map

North Ops

August 12, 2017

11,051 Acres (IRt 8/11/17 @ 2214)



## Legend

- Drop Point
- Ⓜ Water Source
- ⊗ • ⊗ Proposed Dozer Line



0 0.25 0.5 1 Miles

# Rice Ridge Fire

MT-LNF-001464

OPS Map

DIV A

August 12, 2017

11,051 Acres (IRt 8/11/17 @ 2214)

## BRANCH I

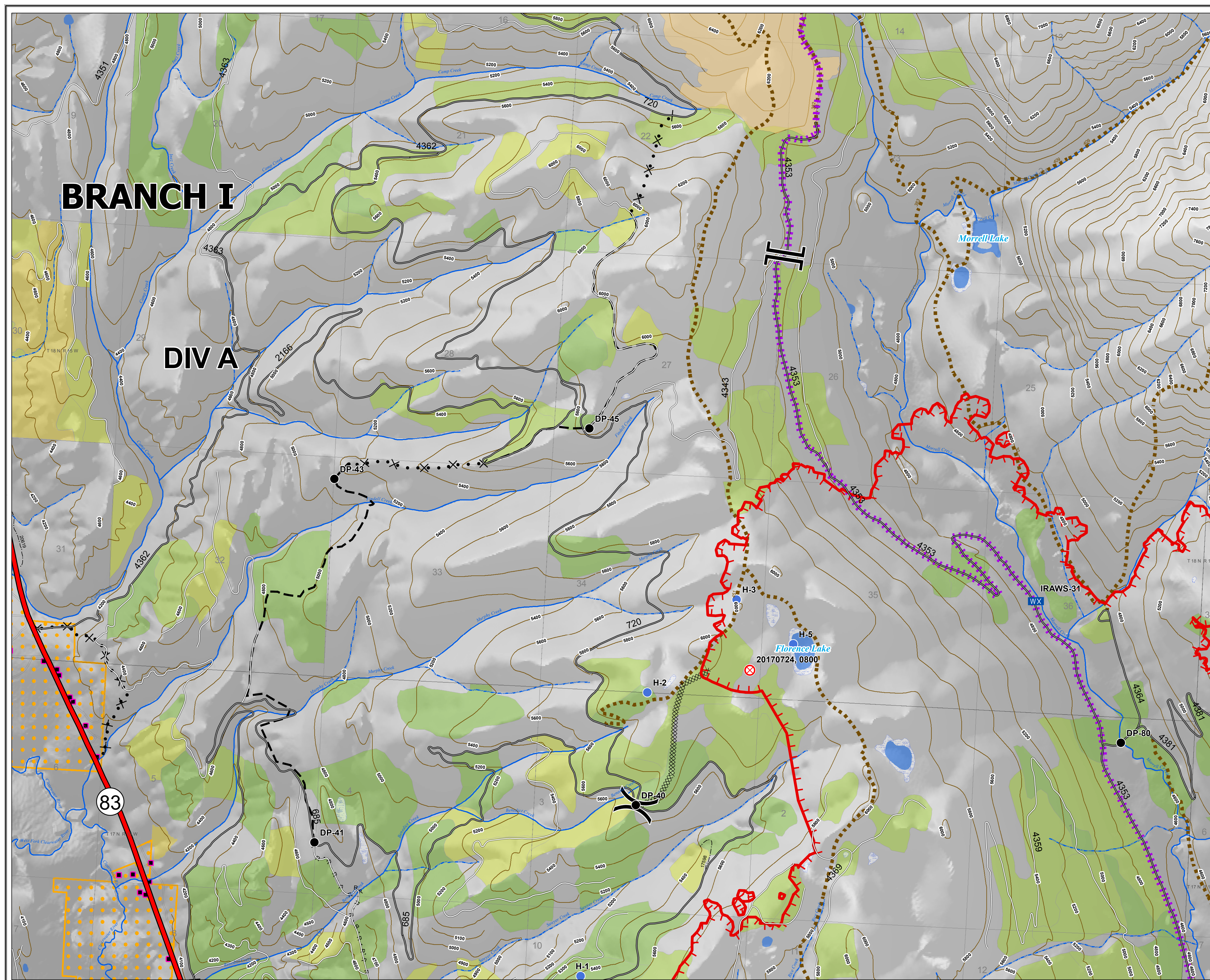
## DIV A

### Legend

- Drop Point
- ⊗ Fire Origin
- Helispot
- WX Mobile Weather Unit
- || Branch
- ) Division
- Uncontrolled Fire Edge
- Completed Dozer Line
- R · R · R · R Road as Completed Line
- Planned Fire Line
- Proposed Dozer Line



0 0.25 0.5 1 Miles



# Rice Ridge Fire

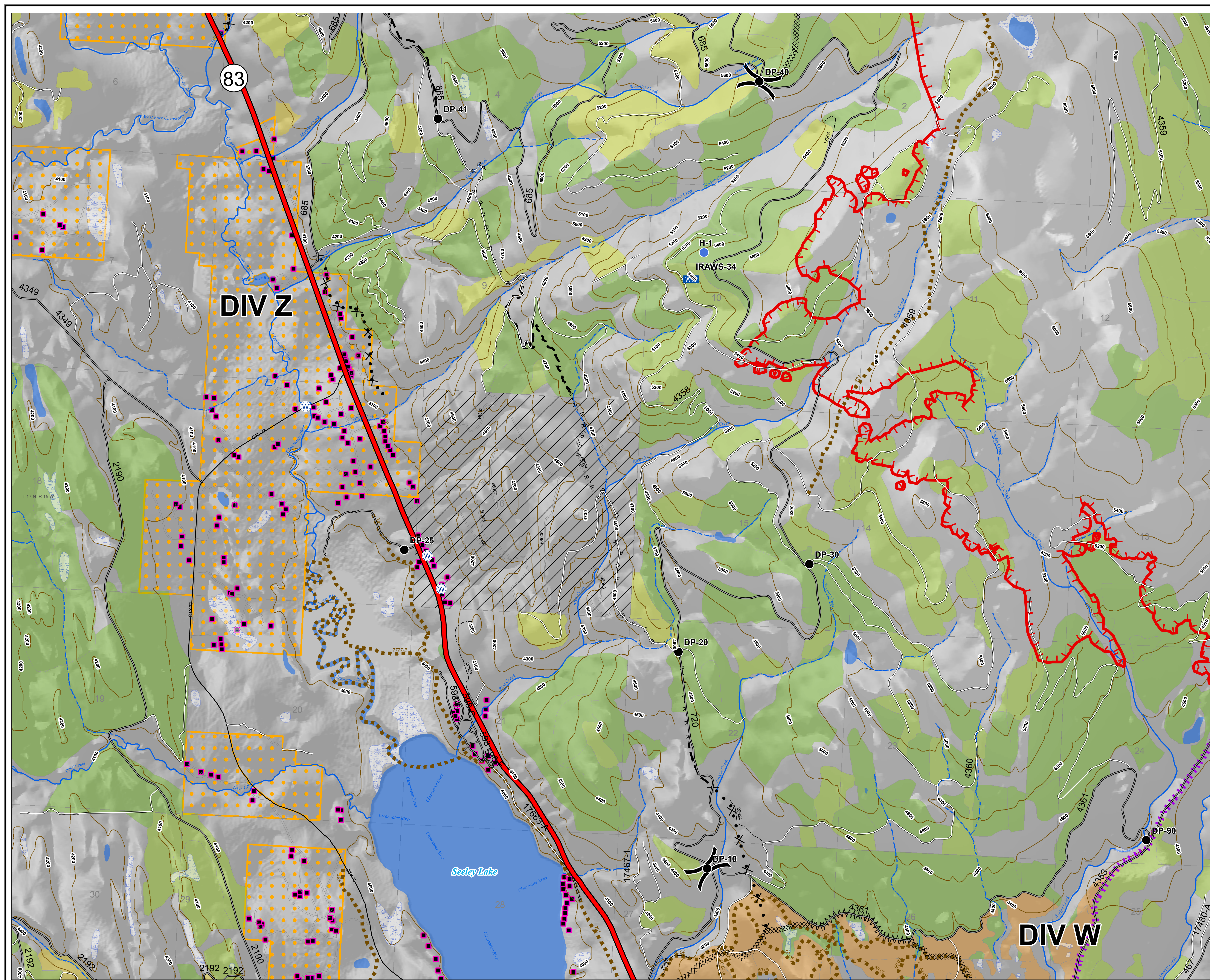
MT-LNF-001464

OPS Map

DIV Z

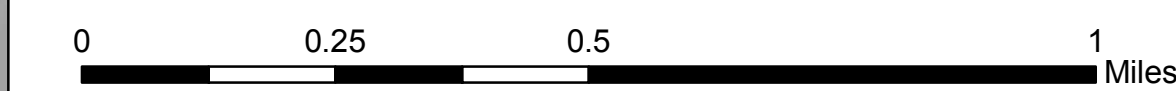
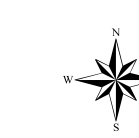
August 12, 2017

11,051 Acres (IRt 8/11/17 @ 2214)



## Legend

- Drop Point
- Helispot
- WX Mobile Weather Unit
- W Water Source
- ) Division
- Uncontrolled Fire Edge
- Completed Dozer Line
- R · R · R · R Road as Completed Line
- Line Break Completed
- Planned Fire Line
- Proposed Dozer Line



# Rice Ridge Fire

MT-LNF-001464

OPS Map

DIV W & T

August 12, 2017

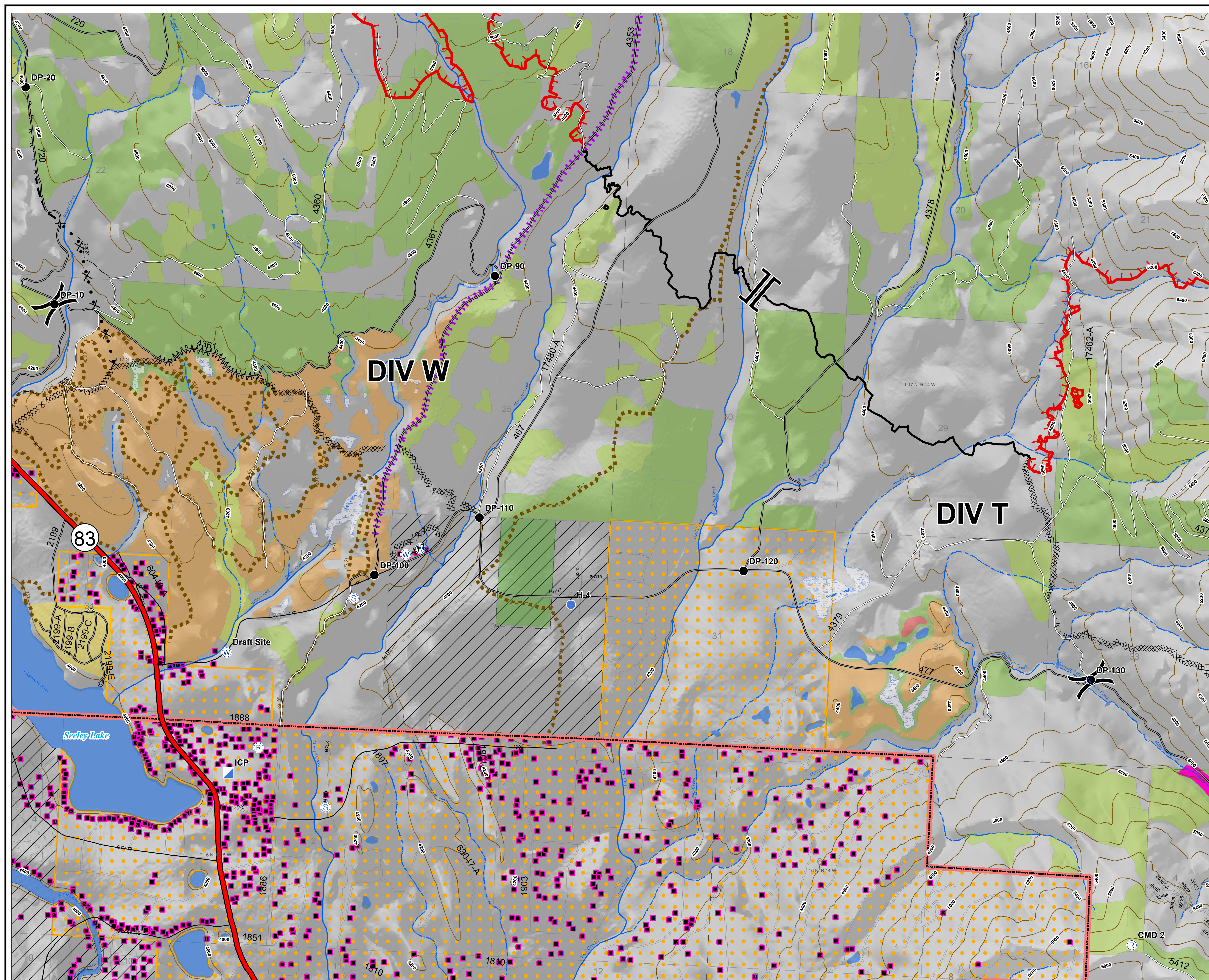
11,051 Acres (IRt 8/11/17 @ 2214)

## Legend

- Drop Point
- Helispot
- ▣ Incident Command Post
- Ⓡ Repeater
- Ⓢ Staging Area
- Ⓦ Water Source
- ⌋ Branch
- ⌋ Division
- Uncontrolled Fire Edge
- ⊗ Completed Dozer Line
- Completed Line
- · · Road as Completed Line
- ⌚ Line Break Completed
- - - Planned Fire Line
- ⊗ · · ⊗ Proposed Dozer Line



0 0.25 0.5 1 Miles



# Rice Ridge Fire

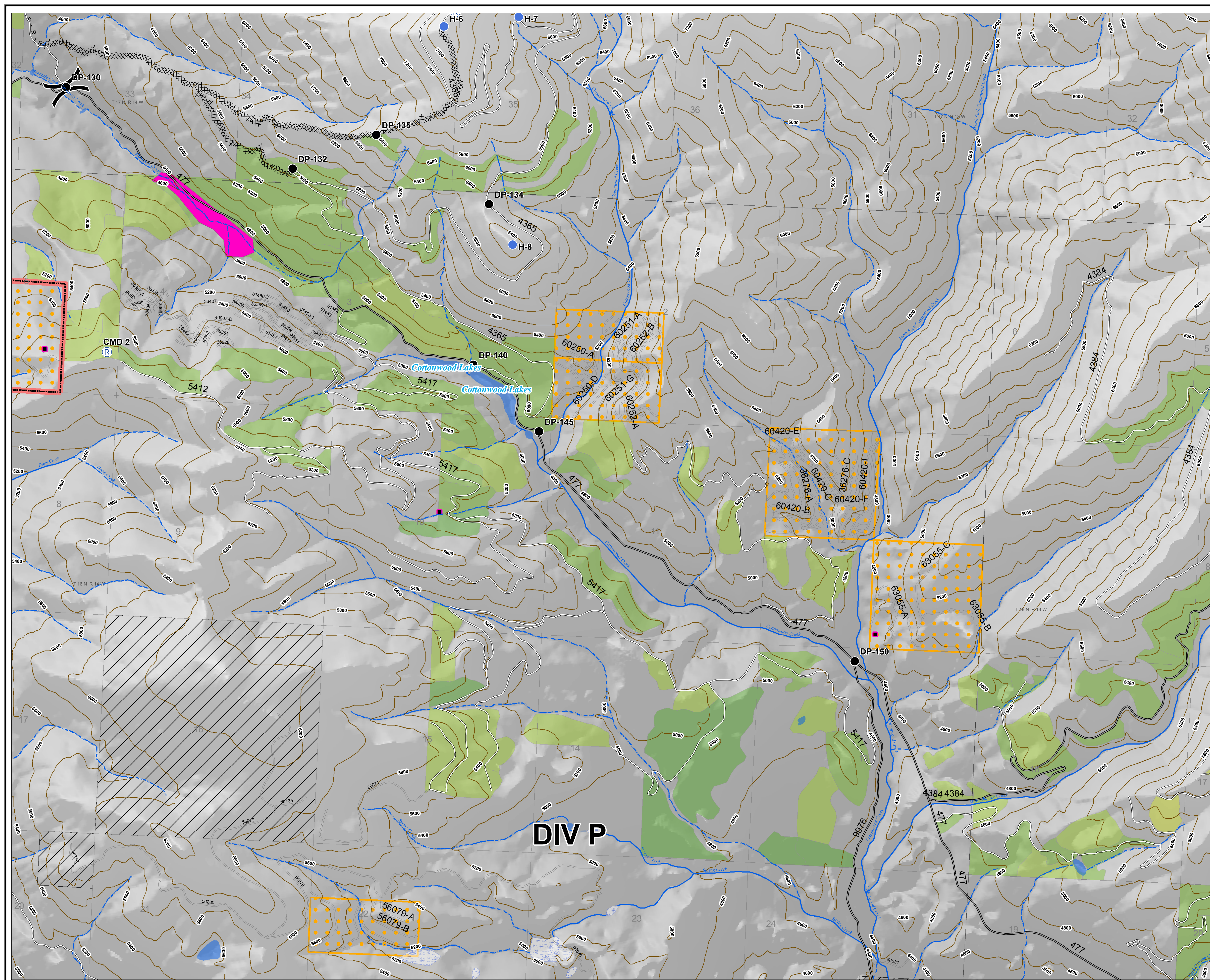
MT-LNF-001464

OPS Map

DIV P - West

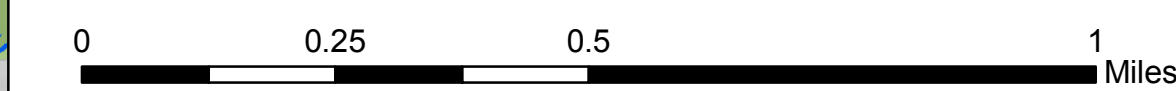
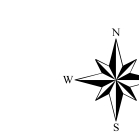
August 12, 2017

11,051 Acres (IRt 8/11/17 @ 2214)



## Legend

- Drop Point
- Helispot
- Ⓡ Repeater
- ⸱ Division
- ▨ Completed Dozer Line
- - - - Road as Completed Line



# Rice Ridge Fire

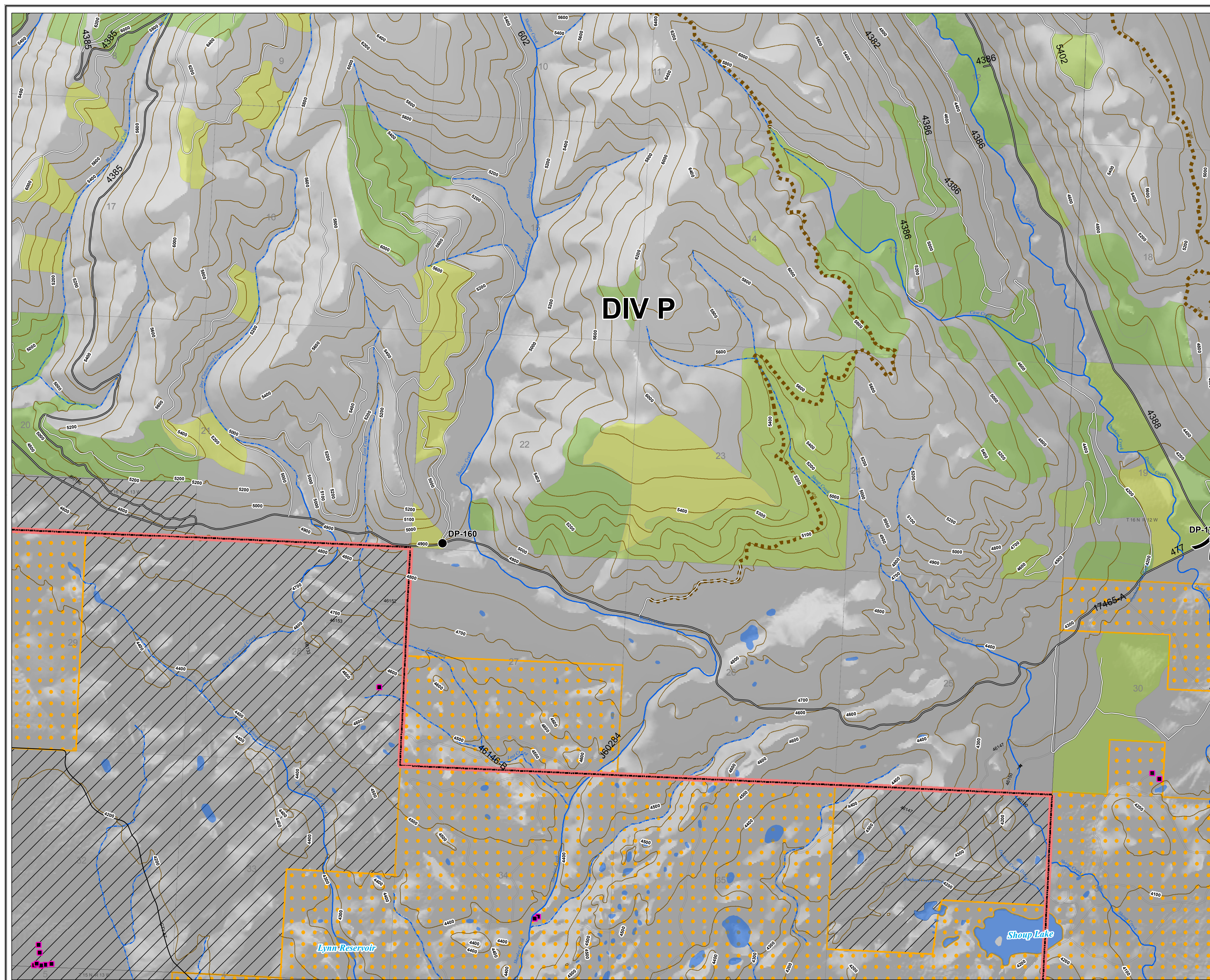
MT-LNF-001464

OPS Map

DIV P - East

August 12, 2017

11,051 Acres (IRt 8/11/17 @ 2214)



**DIV P**

DP-160

DP-170

Lynn Reservoir

Shoup Lake

## Legend

- Drop Point
- ) Division

