

Rice Ridge Fire

MT-LNF-001464

OPS DIV Map

August 12, 2017

11,051 Acres (IR 8/11/17 @ 2214)

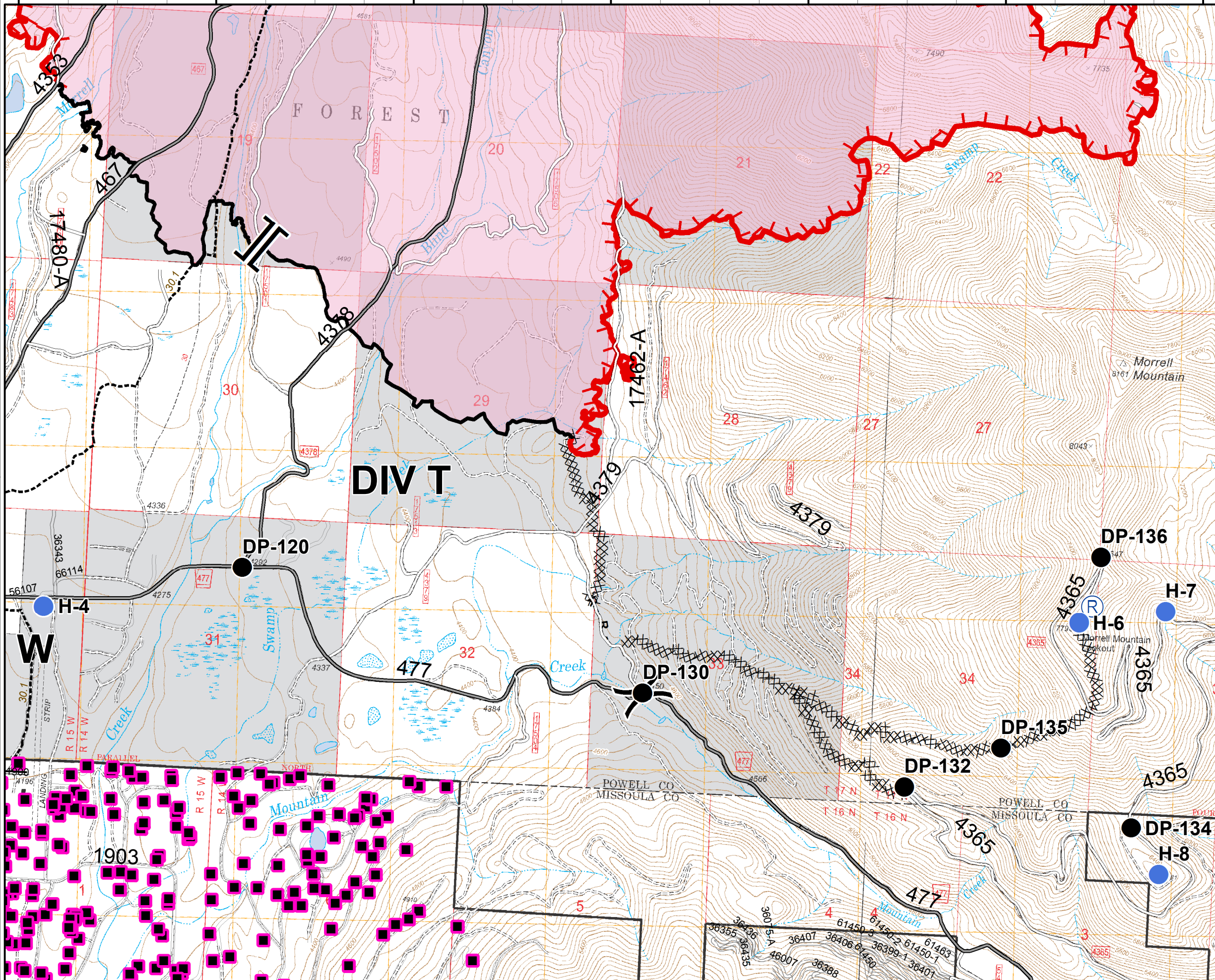
DIV T










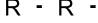

113°27'0"W 113°26'0"W 113°25'0"W 113°24'0"W 113°23'0"W 113°22'0"W 113°21'0"W

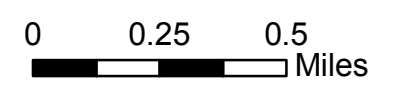
47°13'0"N

47°12'0"N

47°11'0"N



-  Structures
-  Drop Point
-  Helispot
-  Repeater
-  Branch
-  Division
-  Uncontrolled Fire Edge
-  Completed Dozer Line
-  Completed Line
-  Road as Completed Line
-  Fire Area



Rice Ridge Fire













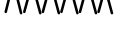

MT-LNF-001464

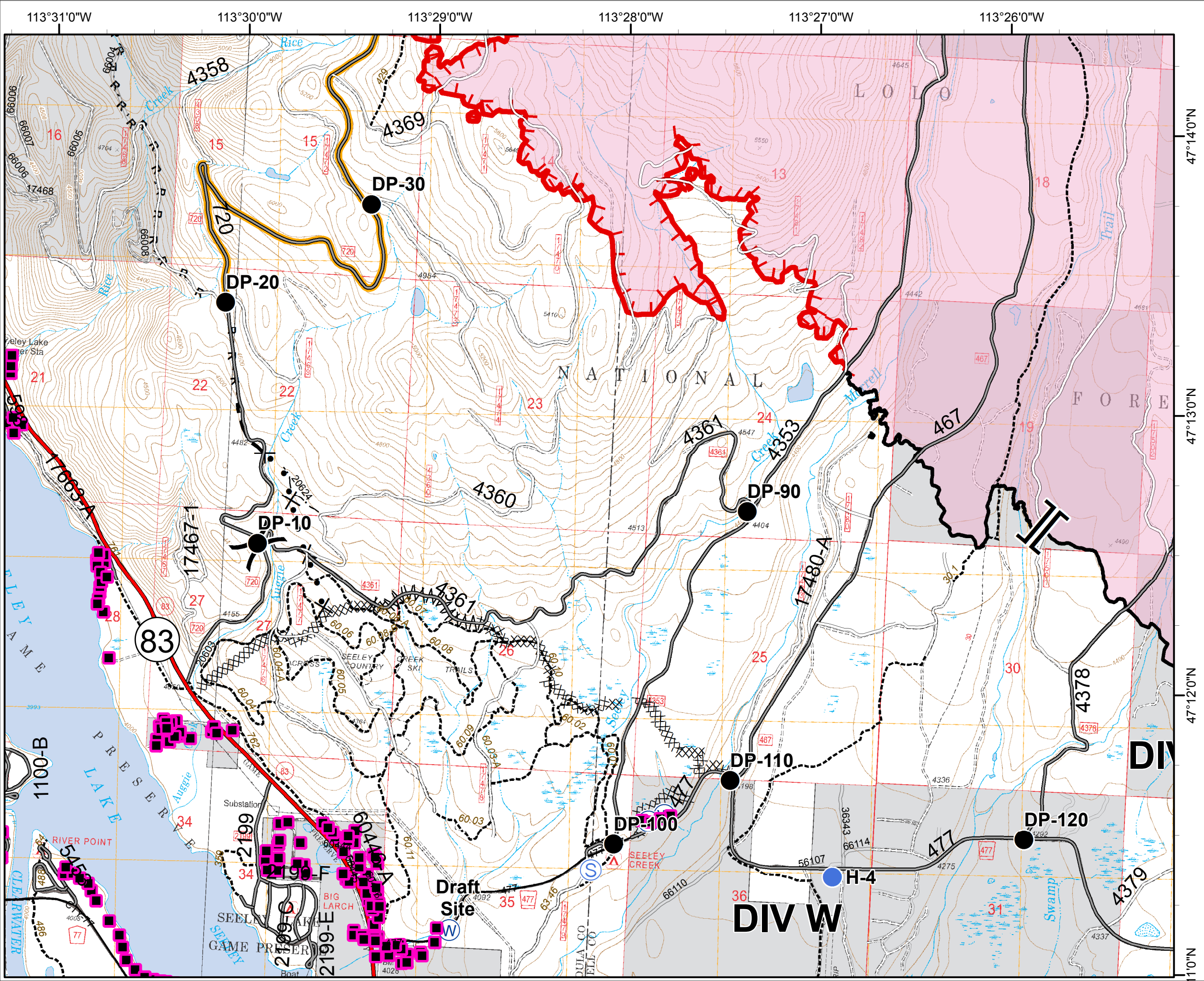
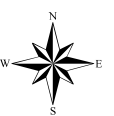
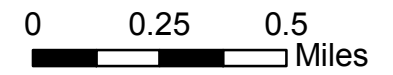
OPS DIV Map

August 12, 2017

11,051 Acres (IR 8/11/17 @ 2214)

DIV W

-  Structures
-  Drop Point
-  Helispot
-  Staging Area
-  Water Source
-  Branch
-  Division
-  Road Closure (Need Div Sup Approval)
-  Uncontrolled Fire Edge
-  Completed Dozer Line
-  Completed Line
-  Planned Fire Line
-  Proposed Dozer Line
-  Fire Area



Rice Ridge Fire

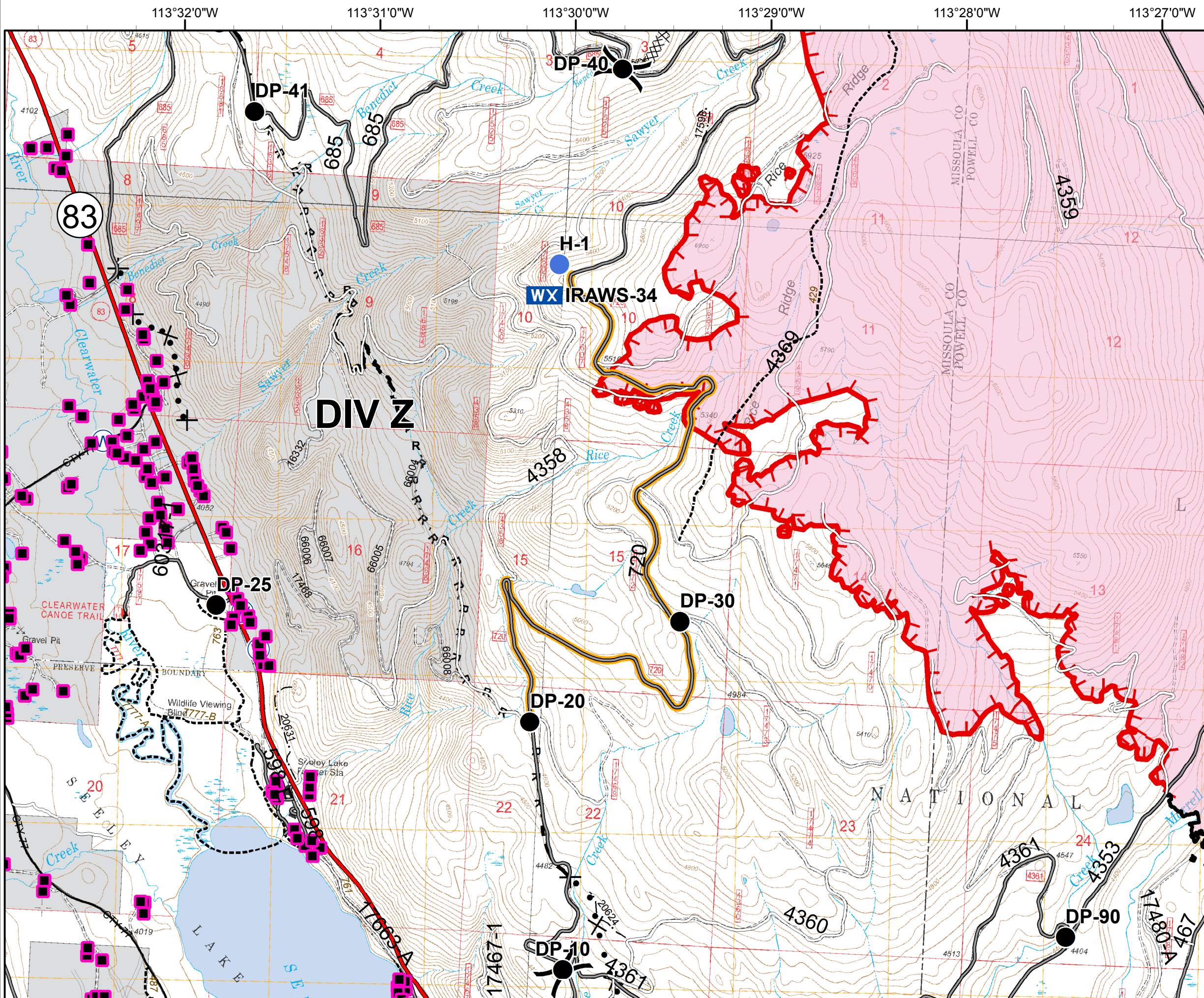
MT-LNF-001464

OPS DIV Map

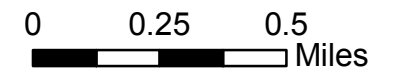
August 12, 2017

11,051 Acres (IR 8/11/17 @ 2214)

DIV Z



- Structures
- Drop Point
- Helispot
- WX Mobile Weather Unit
- Water Source
- Division
- Road Closure (Need Div Sup Approval)
- Uncontrolled Fire Edge
- Completed Dozer Line
- Completed Line
- R - R - Road as Completed Line
- Planned Fire Line
- Proposed Dozer Line
- Fire Area



Rice Ridge Fire

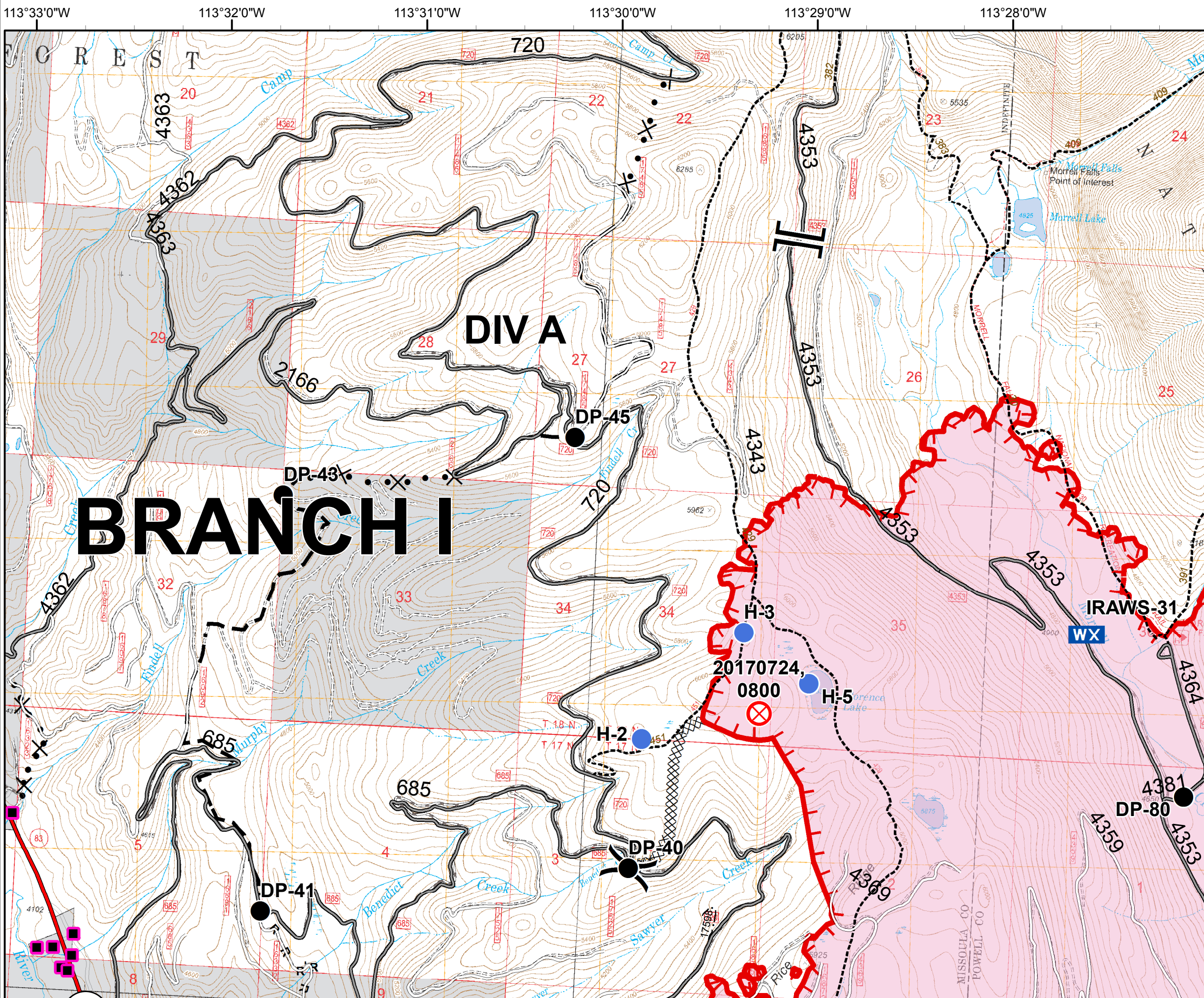
MT-LNF-001464














OPS DIV Map

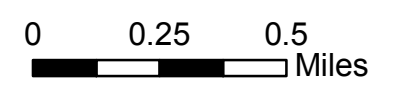
August 12, 2017

11,051 Acres (IR 8/11/17 @ 2214)

DIV A



-  Structures
-  Drop Point
-  Fire Origin
-  Helispot
-  Mobile Weather Unit
-  Branch
-  Division
-  Uncontrolled Fire Edge
-  Completed Dozer Line
-  Road as Completed Line
-  Planned Fire Line
-  Proposed Dozer Line
-  Fire Area



Rice Ridge Fire

MT-LNF-001464

OPS DIV Map

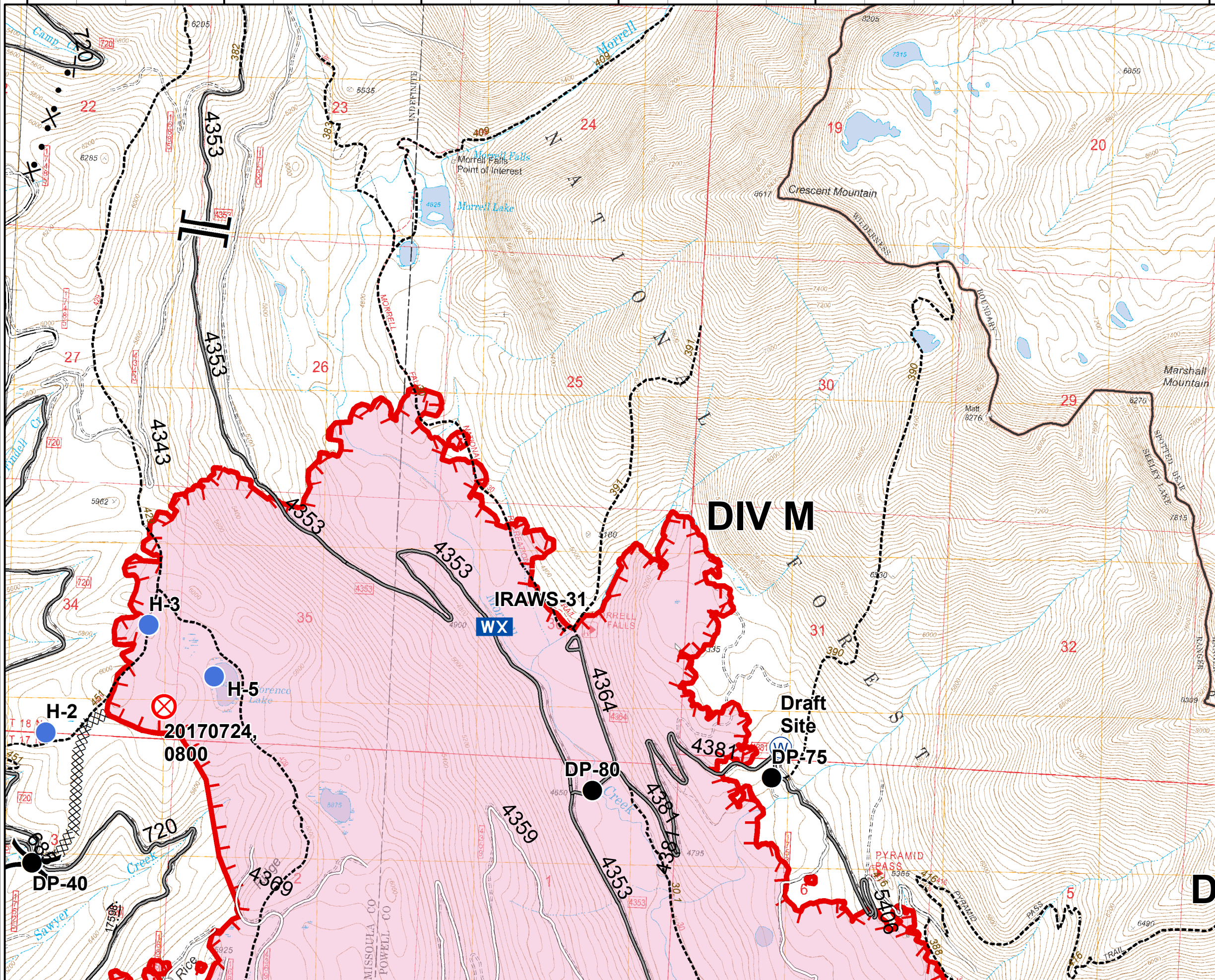
August 12, 2017







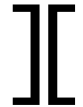






11,051 Acres (IR 8/11/17 @ 2214)

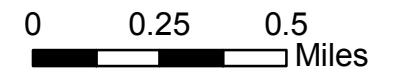
DIV M - North

13°30'0"W 113°29'0"W 113°28'0"W 113°27'0"W 113°26'0"W 113°25'0"W 113°24'0"W

47°18'0"N
47°17'0"N
47°16'0"N



-  Structures
-  Drop Point
-  Fire Origin
-  Helispot
-  Mobile Weather Unit
-  Water Source
-  Branch
-  Division
-  Uncontrolled Fire Edge
-  Completed Dozer Line
-  Planned Fire Line
-  Proposed Dozer Line
-  Fire Area



Rice Ridge Fire

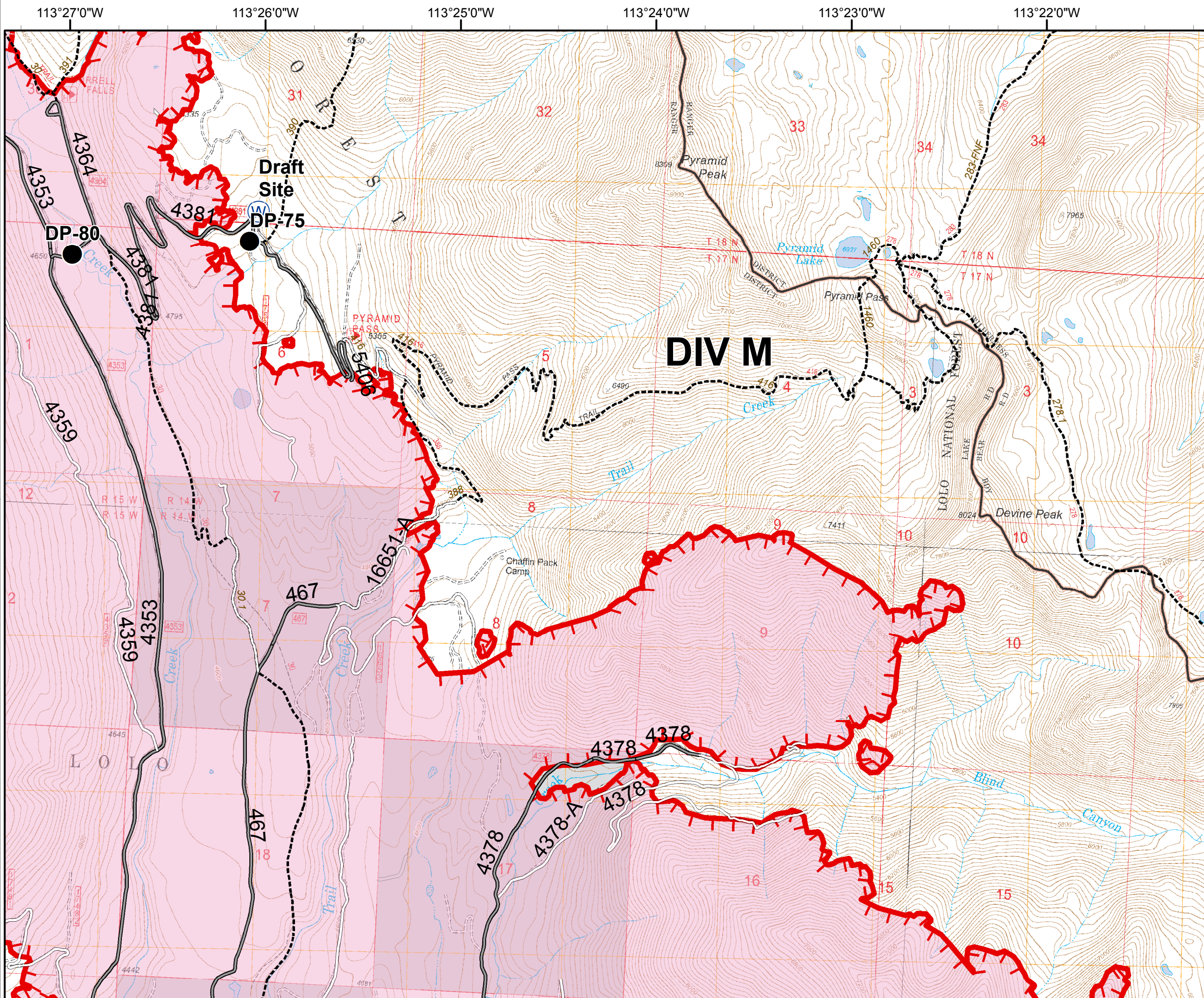
MT-LNF-001464

OPS DIV Map

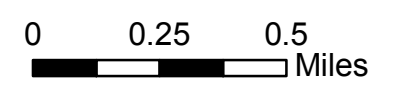
August 12, 2017

11,051 Acres (IR 8/11/17 @ 2214)

DIV M - South



- Structures
- Drop Point
- ⊙ Water Source
- ▬ Uncontrolled Fire Edge
- Fire Area



Rice Ridge Fire

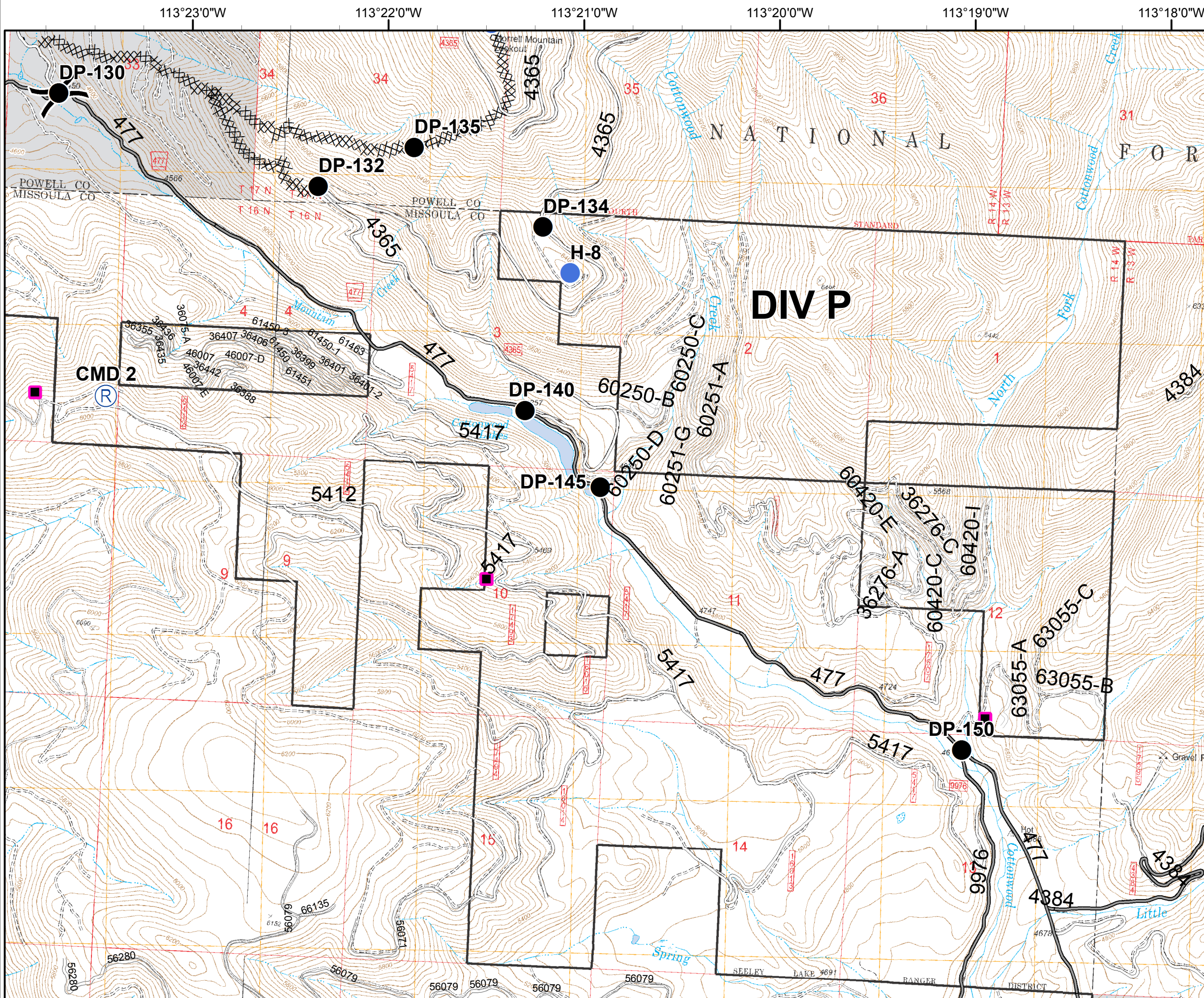
MT-LNF-001464

OPS DIV Map

August 12, 2017

11,051 Acres (IR 8/11/17 @ 2214)

DIV P



- Structures
 - Drop Point
 - Helispot
 - Repeater
 - Division
 - Completed Dozer Line
 - R - R - Road as Completed Line
 - Fire Area
- 0 0.25 0.5 Miles

Rice Ridge Fire

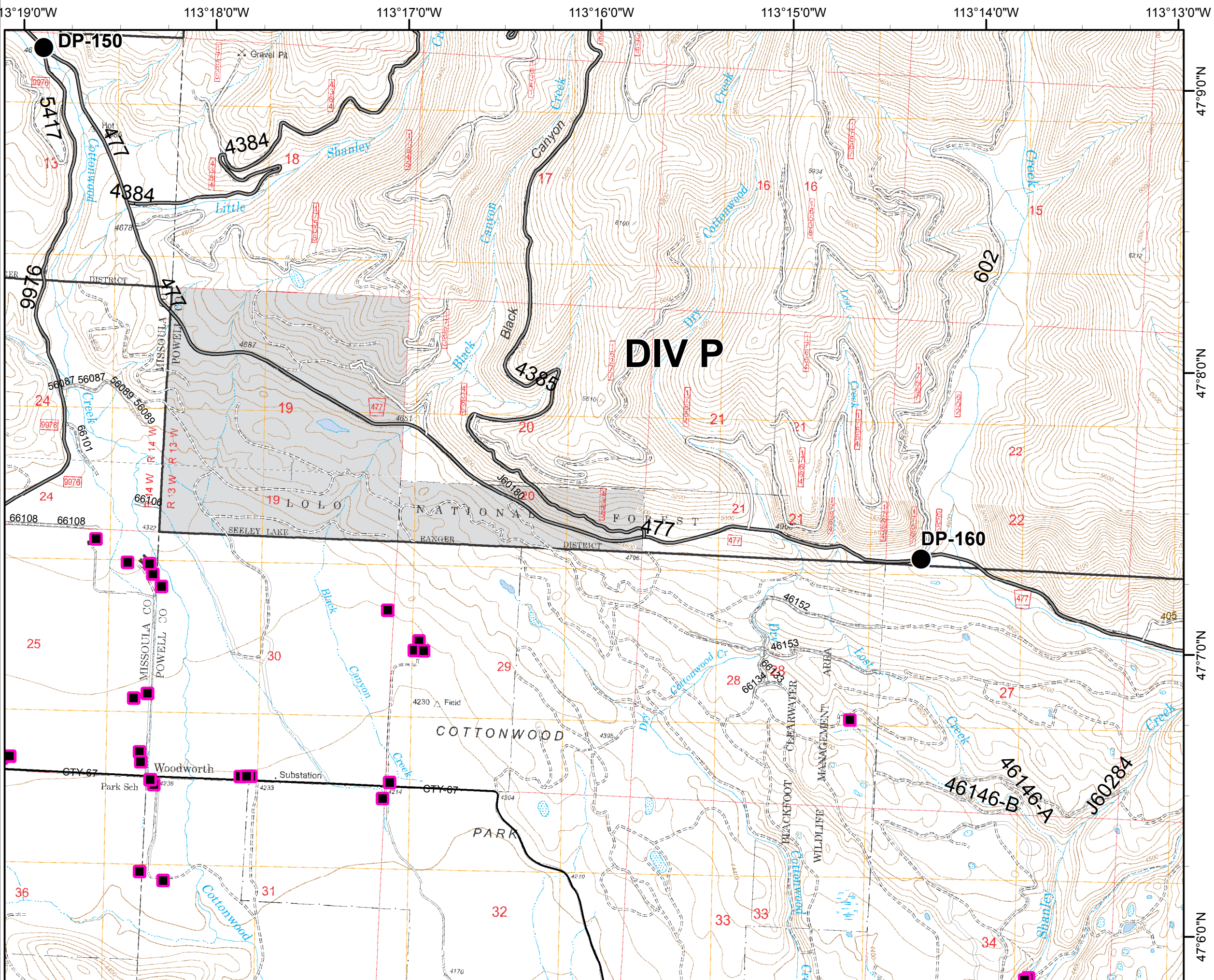
MT-LNF-001464

OPS DIV Map

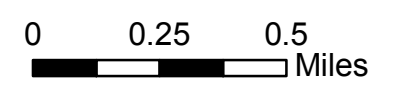
August 12, 2017

11,051 Acres (IR 8/11/17 @ 2214)

DIV P



- Structures
- Drop Point
- Fire Area



113°13'0"W 113°12'0"W 113°11'0"W 113°10'0"W 113°9'0"W 113°8'0"W

Rice Ridge Fire

MT-LNF-001464

OPS DIV Map

August 12, 2017

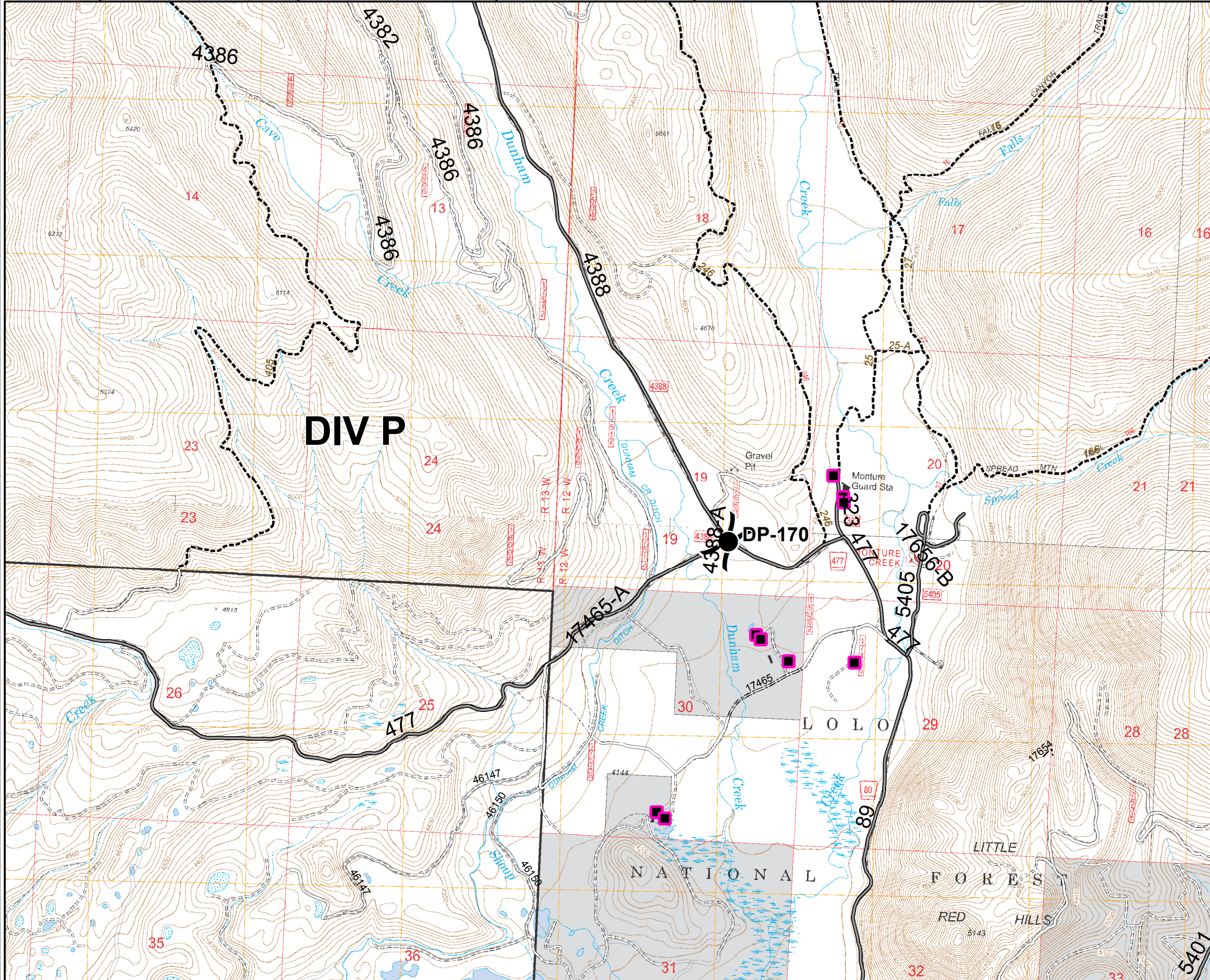
11,051 Acres (IR 8/11/17 @ 2214)





DIV P

47°9'0"N

47°8'0"N

47°7'0"N



-  Structures
-  Drop Point
-  Division
-  Fire Area

